

CAUTG ENROLMENT REPORT 2005-2006

1. COLLECTION OF DATA: On April 3, 2006, the CAUTG Enrolment Questionnaire was posted on the web at <http://www.mun.ca/german/German/CAUTG/questionnaire2006.html> and a message was sent to the CAUTG listserv asking the designated individual in each department to fax the completed form to the Enrolment Surveyor by April 17. E-mails and faxes were sent to universities and colleges that had not responded by that date. Of the 44 universities listed, all 44 replied, for a 100% response rate! Information was also received from 10 colleges.

2. RESULTS AND COMPARISONS: Attached are 17 Tables reflecting the results of this year's survey (Table 4) and comparisons based on data from the history file. Click on the Bookmarks tab for easy access to the Tables.

Table 1: 16-Year Report of German Enrolments 1990-2006 for 44 Universities with Gains and Loss Comparison for 2004-2005 and 2005-2006. This is the comprehensive report for 44 universities, with data missing, so there is no point in totalling the columns or providing a graph. The only comparison made here is for the last two years. All 44 universities reported in both years. **In 2005-2006, 21 universities show a combined gain of 1634 over the previous year, while 23 universities show a combined loss of 1604, for a net gain of 30 students.**

Table 2: Total German Enrolments for 25 Universities That Have Reported Every Year for 16 Years. This is the only category for which we have complete data going back to 1990. **Enrolments at these 25 universities are down this year by 224 students.**

Table 3: Ranking of 2004-2005 German Enrolments for 41 Universities. This table represents the ranking for the previous year, 2004-2005, since the university enrolment figures for 2005-2006 are not yet available. German enrolments are ranked twice: 1) by actual size, and 2) by market share.

Table 4: 2005-2006 Enrolment Survey with 44 Universities Reporting. The total German enrolment for this year reported by 44 universities is 21,210. Table 4 shows the enrolment distribution spread over nine categories: 1 Language, 2 Reading, 3 Business German, 4 Culture/German Studies, 5 Culture/German Studies in Translation, 6 Literature, 7 Literature in Translation, 8 Linguistics and 9 Other. This year's survey results have been added to the database for the comparisons below.

Tables 5 - 10 show the enrolment distribution for Language, Reading, Culture/German Studies, Culture/German Studies in Translation, Literature, and Literature in Translation for the **fourteen-year period 1992-2006**. While distribution figures were in the history file for the year 1990-91, only the total enrolment was available for 1991-92. The tables begin therefore with 1992-93.

26 universities are included in this **fourteen-year study**. Ottawa and York, who could not be used in Table 2 above because of missing data, have been included in Tables 5-10. Simon Fraser, included in Table 2, has been omitted here, since the breakdown for one year (1995-96) was not in the history file. Departments are invited to fill in any data missing from the tables.

Table 5: Total Enrolment in Language Courses. There were 10,985 registrations in language courses, compared to 11,469 last year, **for a decrease of 484 registrations.**

Tables 5a, 5b, 5c, & 5d show the distribution of enrolment in language courses. The previous labels Beginner, Intermediate 1, Intermediate 2, and Advanced were replaced in 2000-2001 for clarity with 1st year, 2nd year, 3rd year and 4th year.

Table 6: Total Enrolment in Reading Courses. There were 696 registrations in reading courses, compared to 995 last year, **for a decrease of 299 registrations.**

Table 7: Total Enrolment in Culture/German Studies. There were 250 registrations in Culture Studies taught in German, compared to 333 last year. The figures on this table for past years may be unreliable, since several departments were reporting culture courses taught in translation here. Departments should examine their reporting in this category and forward any corrections, not only for this year, but for previous years.

Table 8: Total Enrolment in Culture/German Studies in Translation. There were 2240 registrations in Culture Studies taught in Translation, compared to 1,710 last year. The figures on this table for past years may be unreliable. Several departments had avoided this category, thinking it related to courses that teach translation. Instead, it relates to courses with the same subject matter as category 7, but the materials and lectures are not in German. Departments should examine their reporting in these two categories and forward any corrections, not only for this year but for previous years.

Table 9: Total Enrolment in Literature. There were 658 registrations in Literature this year, compared to 582 last year, for an increase of 76.

Table 10: Total Enrolment in Literature in Translation. There were 794 registrations in Literature in Translation this year, compared to 825 last year, for a decrease of 31.

Table 11: Colleges. We received answers from 10 colleges and CÉGEPS.

Table 12: Graduate Enrolments. 12 universities reported graduate enrolments this year. In 2005-2006 there were 79 M.A. students and 45 Ph.D. students, for a total of 124 graduate students, compared to 106 the previous year. The M.A.s increased by 11 and the Ph.D.s increased by 7, for an overall increase of 18 graduate students.

For the first time this year, the table also reports degrees awarded. 31 M.A.s and 6 Ph.D.s were awarded, compared to 29 and 6 last year, for an increase in degrees awarded of 2.

The degrees-awarded figures may be unreliable, since some departments reported they did not have the figures available yet when they filled out the questionnaire. Departments are urged to send updates, for this and past years as well.

Table 13: Film Courses. In 2005-2006 film courses were offered at 13 universities, with a total enrolment of 877, compared to 2004-2005, when film courses were offered at 12 universities with a total enrolment of 868.

Table 14: Average Class Size - 1st-year Language for 44 Universities. With all 44 universities providing data on this question, the class enrolments in first-year language ranged from 12 to 99, with a median of 25 and a mean of 27.

Table 15: Undergraduate Program Enrolments for 30 Universities. The information is incomplete. Some departments are not able to track program enrolments, especially minors, and some will not know total degrees awarded until June. Departments are urged to forward numbers as soon as they become available.

Table 16: Comparison of Enrolments in Language, Reading, Culture Taught in German (Kultur), Culture Taught in Translation (Culture), Literature Taught in German (Literatur), and Literature Taught in Translation (Literature) Courses from 1992-2006. This new table presents the totals from all six categories on one page, with graphic depiction.

Table 17: Comparison of Enrolments in Language, Reading, Culture Taught in German (Kultur), Culture Taught in Translation (Culture), Literature Taught in German (Literatur), and Literature Taught in Translation (Literature) Courses in 2005-2006. This new table compares the totals of the six categories for this year, with graphic depiction.

3. SUMMARY. This report brings good news, in that we find ourselves once again with an increase in overall enrolments, after a decline last year. Of 44 universities reporting in both 2004-2005 and 2005-2006, 21 universities show a combined gain of 1634 over the previous year and 23 show a combined loss of 1604, **for a net gain of 30 students.** There are gains in third-year language, German studies in translation, literature, and graduate enrolments.

This report differs from the report distributed at the Annual Meeting in May in that it reflects updates and corrections received through 26 June 2006. To update the printed copy you received at the May meeting, change the registrations for Literature in Translation to 794 (see Tables 10, 16, and 17), with changes to Table 4 for Windsor in columns 7 (82) and 8 (91), and the number of answers received from colleges to 10 (see Table 11). Also add Carleton's average first-year class size of 24 to Table 14, with no change to the range, mean or median.

Every attempt has been made to supply an accurate report. Figures deviating substantially from previous years have been followed up. Please check your own institution's figures for accuracy, in particular to determine if whole courses have been omitted and if courses have been reported in the wrong category.

Respectfully submitted,
Marcella Rollmann
Enrolment Surveyor
22 May 2006, revised 26 June 2006
marcella@mun.ca

Table 1

**16-Year Report of German Enrolments 1990-2006 for 44 Universities with Gain and Loss
Comparison for 2004-2005 and 2005-2006**

University	90-91	91-92	92-93	93-94	94-95	95-96	96-97	97-98	98-99	99-00	00-01	01-02	02-03	03-04	04-05	05-06	Gain	Loss
1 Acadia	428	n.d.	n.d.	n.d.	460	469	496	485	300	323	368	359	438	482	467	425		42
2 Alberta	1054	1127	1344	1432	1153	1188	1001	1063	991	984	738	741	803	790	816	785		31
3 Athabasca	n.d.	n.d.	n.d.	n.d.	n.d.	n.d.	n.d.	n.d.	n.d.	n.d.	160	n.d.	97	116	99	110	11	
4 Augustana	n.d.	n.d.	n.d.	n.d.	289	215	123	128	n.d.	241	176	165	165	121	116	304	188	
5 Bishop's	n.d.	n.d.	n.d.	n.d.	383	300	n.d.	n.d.	n.d.	n.d.	187	216	198	147	221	158		63
6 Brandon	68	45	46	49	51	60	48	132	53	29	30	30	27	40	40	21		19
7 UBC	1119	1352	1241	1263	1065	1156	1123	1215	1372	1623	1880	1454	1926	2239	1981	2415	434	
8 Brock	397	485	407	344	330	488	438	381	295	326	225	189	173	173	238	249	11	
9 Calgary	983	817	924	810	769	751	743	514	573	512	520	423	474	551	490	552	62	
10 Carleton	751	743	758	848	902	758	672	429	n.d.	n.d.	232	208	304	319	248	286	38	
11 Concordia	n.d.	n.d.	920	892	839	662	1075	584	n.d.	402	443	433	558	581	524	426		98
12 Dalhousie	839	1233	1295	1282	1332	1444	1439	1336	1399	987	897	935	1089	1226	871	809		62
13 Guelph	332	258	271	292	249	245	298	306	239	244	247	286	311	373	331	314		17
14 Lakehead	40	30	88	34	70	41	26	46	38	32	64	60	28	28	28	32	4	
15 Laurentian	72	101	86	113	64	91	80	50	n.d.	62	58	58	122	65	68	97	29	
16 Laval	629	735	599	656	535	411	358	301	413	466	362	509	579	768	803	774		29
17 Lethbridge	n.d.	n.d.	110	n.d.	98	133	n.d.	n.d.	n.d.	98	111	86	84	99	107	111	4	
18 Manitoba	540	482	n.d.	n.d.	n.d.	249	n.d.	152	n.d.	224	168	470	484	562	490	513	23	
19 McGill	945	994	953	1016	1053	961	919	809	1062	963	912	972	993	819	947	741		206
20 McMaster	666	624	755	754	712	523	541	364	406	423	336	403	337	506	350	277		73
21 Memorial	884	971	980	849	804	615	708	676	769	771	836	829	814	706	762	785	23	
22 Montreal	1027	1108	1247	1409	1142	1035	1087	1004	883	1078	1016	1120	1160	1134	1286	1096		190
23 Mount Allison	156	214	300	353	338	383	327	278	236	270	222	300	255	237	200	223	23	
24 Mt. St. Vin.	34	51	n.d.	n.d.	15	n.d.	n.d.	n.d.	n.d.	n.d.	n.d.	42	34	36	26	23		3
25 UNB	649	593	586	428	524	486	456	473	332	349	336	391	360	487	430	309		121
26 Ottawa	n.d.	381	417	414	400	405	304	263	292	231	242	312	333	419	463	542	79	
27 PEI	n.d.	n.d.	n.d.	n.d.	n.d.	n.d.	n.d.	n.d.	n.d.	n.d.	n.d.	n.d.	n.d.	100	106	86		20
28 UQAM	266	217	n.d.	n.d.	221	373	366	n.d.	358	396	452	525	625	662	787	607		180
29 Queen's	761	1038	1018	882	774	724	711	720	622	641	602	538	655	723	721	691		30
30 Regina	421	450	537	506	445	429	420	399	311	362	432	429	375	317	296	280		16
31 Saint F.X.	n.d.	n.d.	n.d.	n.d.	n.d.	n.d.	n.d.	n.d.	n.d.	n.d.	n.d.	n.d.	n.d.	n.d.	78	96	18	
32 Saint Mary's	122	170	98	195	237	229	180	179	241	224	231	206	189	271	294	228		66
33 Sask.	276	214	240	n.d.	208	234	145	n.d.	142	n.d.	172	206	216	229	206	191		15
34 Simon Fr.	235	197	92	165	131	143	144	113	127	89	132	274	605	555	380	405	25	
35 Toronto	1259	1410	1603	1842	1467	1393	1395	1572	1519	1779	1667	1664	1787	1885	1589	1795	206	
36 Trent	455	358	354	n.d.	n.d.	243	259	214	183	280	298	245	245	298	230	416	186	
37 Trinity W.	n.d.	n.d.	n.d.	n.d.	n.d.	n.d.	n.d.	n.d.	n.d.	n.d.	n.d.	n.d.	n.d.	n.d.	46	34		12
38 Victoria	806	743	1043	728	718	826	748	770	767	880	912	1048	990	1084	1202	963		239
39 Waterloo	1323	1449	1502	1422	1258	1221	994	908	863	949	811	935	777	745	1029	1051	22	
40 W. Ontario	700	738	758	723	592	534	498	422	353	427	387	342	412	347	324	373	49	
41 W. Laurier	369	384	396	302	361	322	341	382	419	393	233	277	370	449	360	304		56
42 Windsor	326	329	235	319	301	385	343	295	428	346	367	367	402	445	386	458	72	
43 Winnipeg	198	217	n.d.	258	224	157	150	144	98	101	98	126	166	204	200	184		16
44 York	n.d.	403	567	562	546	598	567	629	605	592	506	538	513	551	544	671	127	
Total																	1634	1604

In 2005-2006, 21 universities show a combined gain of 1634 over the previous year while 23 show a combined loss of 1604, for a net gain of 30 students.

Table 2

Total German Enrolments for 25 Universities that have Reported Every Year for 16 Years

University	90-91	91-92	92-93	93-94	94-95	95-96	96-97	97-98	98-99	99-00	00-01	01-02	02-03	03-04	04-05	05-06
1 Alberta	1054	1127	1344	1432	1153	1188	1001	1063	991	984	738	741	803	790	816	785
2 Brandon	68	45	46	49	51	60	48	132	53	29	30	30	27	40	40	21
3 UBC	1119	1352	1241	1263	1065	1156	1123	1215	1372	1623	1880	1454	1926	2239	1981	2415
4 Brock	397	485	407	344	330	488	438	381	295	326	225	189	173	173	238	249
5 Calgary	983	817	924	810	769	751	743	514	573	512	520	423	474	551	490	552
6 Dalhousie	839	1233	1295	1282	1332	1444	1439	1336	1399	987	897	935	1089	1226	871	809
7 Guelph	332	258	271	292	249	245	298	306	239	244	247	286	311	373	331	314
8 Lakehead	40	30	88	34	70	41	26	46	38	32	64	60	28	28	28	32
9 Laval	629	735	599	656	535	411	358	301	413	466	362	509	579	768	803	774
10 McGill	945	994	953	1016	1053	961	919	809	1062	963	912	972	993	819	947	741
11 McMaster	666	624	755	754	712	523	541	364	406	423	336	403	337	506	350	277
12 Memorial	884	971	980	849	804	615	708	676	769	771	836	829	814	706	762	785
13 Montreal	1027	1108	1247	1409	1142	1035	1087	1004	883	1078	1016	1120	1160	1134	1286	1096
14 Mt. Allison	156	214	300	353	338	383	327	278	236	270	222	300	255	237	200	223
15 UNB	649	593	586	428	524	486	456	473	332	349	336	391	360	487	430	309
16 Queen's	761	1038	1018	882	774	724	711	720	622	641	602	538	655	723	721	691
17 Regina	421	450	537	506	445	429	420	399	311	362	432	429	375	317	296	280
18 Saint Mary's	122	170	98	195	237	229	180	179	241	224	231	206	189	271	294	228
19 Simon Fr.	235	197	92	165	131	143	144	113	127	89	132	274	605	555	380	405
20 Toronto	1259	1410	1603	1842	1467	1393	1395	1572	1519	1779	1667	1664	1787	1885	1589	1795
21 Victoria	806	743	1043	728	718	826	748	770	767	880	912	1048	990	1084	1202	963
22 Waterloo	1323	1449	1502	1422	1258	1221	994	908	863	949	811	935	777	745	1029	1051
23 W. Ontario	700	738	758	723	592	534	498	422	353	427	387	342	412	347	324	373
24 W. Laurier	369	384	396	302	361	322	341	382	419	393	233	277	370	449	360	304
25 Windsor	326	329	235	319	301	385	343	295	428	346	367	367	402	445	386	458
Total	16110	17494	18318	18055	16411	15993	15286	14658	14711	15147	14395	14722	15891	16898	16154	15930

2. German Enrolments 1990-2006

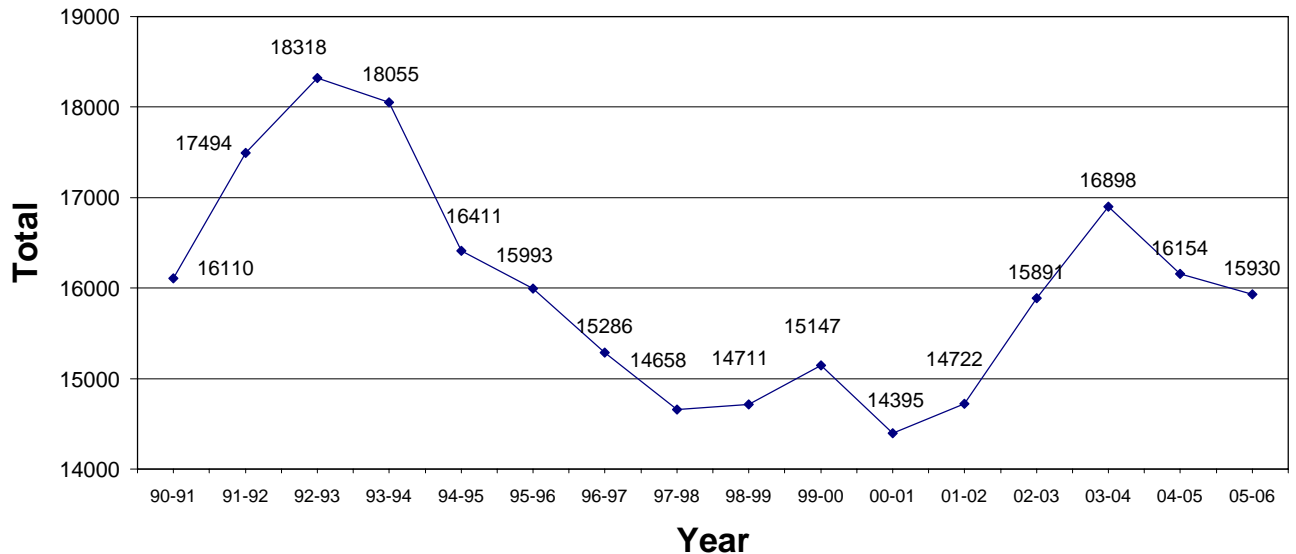


Table 3
Ranking of 2004-2005 German Enrolments for 41 Universities

Alphabetical Listing			Ranking by German Course Registrations		Ranking by Market Share	
University	German Enr. 04-05	University Enr. 04-05	University	German Enr. 04-05		
1 Acadia	467	3,679	1 UBC	1981	1 Acadia	12.69
2 Alberta	816	30,605	2 Toronto	1589	2 Bishop's	10.09
3 Bishop's	221	2,191	3 Montréal	1286	3 Victoria	9.65
4 Brandon	40	2,299	4 Victoria	1202	4 Mount Allison	9.61
5 UBC	1981	29,573	5 Waterloo	1029	5 UBC	6.70
6 Brock	238	13,090	6 McGill	947	6 Dalhousie	6.45
7 Calgary	490	23,404	7 Dalhousie	871	7 Memorial	5.34
8 Carleton	248	18,720	8 Alberta	816	8 Saint Mary's	4.70
9 Concordia	524	19,024	9 Laval	803	9 Winnipeg	4.65
10 Dalhousie	871	13,514	10 UQAM	787	10 Waterloo	4.44
11 Guelph	331	16,653	11 Memorial	762	11 Queen's	4.31
12 Lakehead	28	6,123	12 Queen's	721	12 UNB	4.05
13 Laurentian	68	5,939	13 York	544	13 Regina	3.78
14 Laval	803	25,552	14 Concordia	524	14 UQAM	3.72
15 Lethbridge	107	6,847	15 Calgary	490	15 McGill	3.71
16 Manitoba	490	20,335	16 Manitoba	490	16 Trent	3.67
17 McGill	947	25,552	17 Acadia	467	17 Montréal	3.41
18 McMaster	350	19,264	18 Ottawa	463	18 Wilfrid Laurier	3.31
19 Memorial	762	14,275	19 UNB	430	19 Laval	3.14
20 Montréal	1286	37,019	20 Windsor	386	20 P.E.I.	3.07
21 Mount Allison	200	2,082	21 Simon Fraser	380	21 Simon Fraser	2.93
22 Mount St. Vincent	26	2,384	22 Wilfrid Laurier	360	22 Windsor	2.92
23 UNB	430	10,609	23 McMaster	350	23 Concordia	2.75
24 Ottawa	463	24,975	24 Guelph	331	24 Alberta	2.67
25 P.E.I.	106	3,454	25 W. Ontario	324	25 Toronto	2.65
26 UQAM	787	21,177	26 Regina	296	26 Manitoba	2.41
27 Queen's	721	16,743	27 Saint Mary's	294	27 Calgary	2.09
28 Regina	296	7,833	28 Carleton	248	28 Guelph	1.99
29 Saint F. Xavier	78	4,281	29 Brock	238	29 Ottawa	1.85
30 Saint Mary's	294	6,251	30 Trent	230	30 Brock	1.82
31 Saskatchewan	206	15,407	31 Bishop's	221	31 McMaster	1.82
32 Simon Fraser	380	12,960	32 Saskatchewan	206	32 Saint F. Xavier	1.82
33 Toronto	1589	59,870	33 Mount Allison	200	33 Brandon	1.74
34 Trent	230	6,275	34 Winnipeg	200	34 Lethbridge	1.56
35 Victoria	1202	12,452	35 Lethbridge	107	35 York	1.35
36 Waterloo	1029	23,185	36 P.E.I.	106	36 Saskatchewan	1.34
37 W. Ontario	324	28,529	37 Saint F. Xavier	78	37 Carleton	1.32
38 Wilfrid Laurier	360	10,864	38 Laurentian	68	38 Laurentian	1.14
39 Windsor	386	13,215	39 Brandon	40	39 W. Ontario	1.14
40 Winnipeg	200	4,305	40 Lakehead	28	40 Mount St. Vincent	1.09
41 York	544	40,299	41 Mount St. Vincent	26	41 Lakehead	0.46

This table represents the ranking for the previous year, 2004-2005, since the university enrolment figures for 2005-2006 are not yet available. The university figures for full-time enrolment for 2004-2005 are taken from [Maclean's Guide to Canadian Universities 2006](#), which uses 2004-2005 enrolment figures. Note that market share is calculated by dividing total German course registrations for the year by full-time university enrolment x 100, since total university course registrations are not available.

Table 4

2005-2006 Enrolment Survey with 44 Universities Reporting

Column Key										
	1. Language		4. Culture/German Studies		5. Culture/German Studies in Translation		7. Literature in Translation		8. Linguistics	
	2. Reading		6. Literature				9. Other*			
	3. Business German									
University	1	2	3	4	5	6	7	8	9	Total
1 Acadia	406	0	0	0	19	0	0	0	0	425
2 Alberta	571	46	0	0	10	33	0	28	97	785
3 Athabasca	96	14	0	0	0	0	0	0	0	110
4 Augustana	274	0	0	0	0	0	30	0	0	304
5 Bishop's	110	0	0	24	0	14	0	10	0	158
6 Brandon	21	0	0	0	0	0	0	0	0	21
7 UBC	927	426	38	0	289	124	312	0	299	2415
8 Brock	220	0	0	0	24	5	0	0	0	249
9 Calgary	331	0	0	22	131	8	14	6	40	552
10 Carleton	286	0	0	0	0	0	0	0	0	286
11 Concordia	342	0	0	0	9	37	0	0	38	426
12 Dalhousie	347	20	8	0	366	68	0	0	0	809
13 Guelph	249	0	4	14	22	25	0	0	0	314
14 Lakehead	32	0	0	0	0	0	0	0	0	32
15 Laurentian	84	0	0	0	13	0	0	0	0	97
16 Laval	649	0	0	0	0	0	0	0	125	774
17 Lethbridge	108	0	0	0	0	3	0	0	0	111
18 Manitoba	414	0	50	0	8	41	0	0	0	513
19 McGill	572	0	16	0	0	51	102	0	0	741
20 McMaster	227	0	0	27	0	0	10	0	13	277
21 Memoria	666	0	0	0	65	19	35	0	0	785
22 Montreal	780	13	0	83	51	84	31	8	46	1096
23 Mount Allison	151	0	0	0	59	13	0	0	0	223
24 Mt. St. Vincent	23	0	0	0	0	0	0	0	0	23
25 UNB	243	39	0	16	0	0	11	0	0	309
26 Ottawa	395	0	0	0	102	13	32	0	0	542
27 PEI	75	0	0	0	0	11	0	0	0	86
28 UQAM	535	72	0	0	0	0	0	0	0	607
29 Queen's	400	113	22	34	78	29	11	0	4	691
30 Regina	256	0	7	9	0	8	0	0	0	280
31 Saint F. Xavier	96	0	0	0	0	0	0	0	0	96
32 Saint Mary's	194	0	0	0	34	0	0	0	0	228
33 Saskatchewan	191	0	0	0	0	0	0	0	0	191
34 Simon Fraser	211	194	0	0	0	0	0	0	0	405
35 Toronto	1366	38	59	45	118	107	20	0	42	1795
36 Trent	309	0	0	0	57	50	0	0	0	416
37 Trinity Western	34	0	0	0	0	0	0	0	0	34
38 Victoria	453	0	0	0	428	0	82	0	0	963
39 Waterloo	730	0	29	0	229	19	0	14	30	1051
40 W. Ontario	331	1	14	0	0	22	0	0	5	373
41 Wilfrid Laurier	280	0	0	0	0	0	0	0	24	304
42 Windsor	222	0	0	0	31	3	82	91	29	458
43 Winnipeg	156	0	0	10	18	0	0	0	0	184
44 York	382	0	0	0	203	27	52	0	7	671
Total	14745	976	247	284	2364	814	824	157	799	21210

The total enrolment for German this year reported by 44 universities is 21,210.

*Courses included under column 9 (other) are Danish, Norwegian, Swedish, Scandinavian literature, Yiddish, Yiddish literature, Yiddish culture, Yiddish cinema, history of German, research methods, drama, literary theory, translation, independent study, film courses, and exchanges.

Table 5
Total Enrolment in Language Courses

The following 26 universities have provided a complete data set for the 14 years 1992-2006 and will be used for tables 5 through 10:

Alberta, Brandon, UBC, Brock, Calgary, Dalhousie, Guelph, Lakehead, Laval, McGill, McMaster, Memorial, Montreal, Mount Allison, UNB, Ottawa, Queen's, Regina, Saint Mary's, Toronto, Victoria, Waterloo, W. Ontario, Wilfrid Laurier, Windsor, York.

	92-93	93-94	94-95	95-96	96-97	97-98	98-99	99-00	00-01	01-02	02-03	03-04	04-05	05-06
1st Year Total	9166	8580	7912	7790	7833	7841	7101	7601	7074	7525	7953	8287	8145	7675
2nd Year Total	2985	2890	2513	2238	2222	2424	2060	2144	1957	1954	2146	2284	2141	2053
3rd Year Total	1528	1505	1505	1336	1083	1206	897	976	940	903	868	984	928	1071
4th Year Total	916	887	761	736	607	472	642	421	345	211	261	386	255	186
Total	14595	13862	12691	12100	11745	11943	10700	11142	10316	10593	11228	11941	11469	10985

5. Total Enrolment in Language Courses

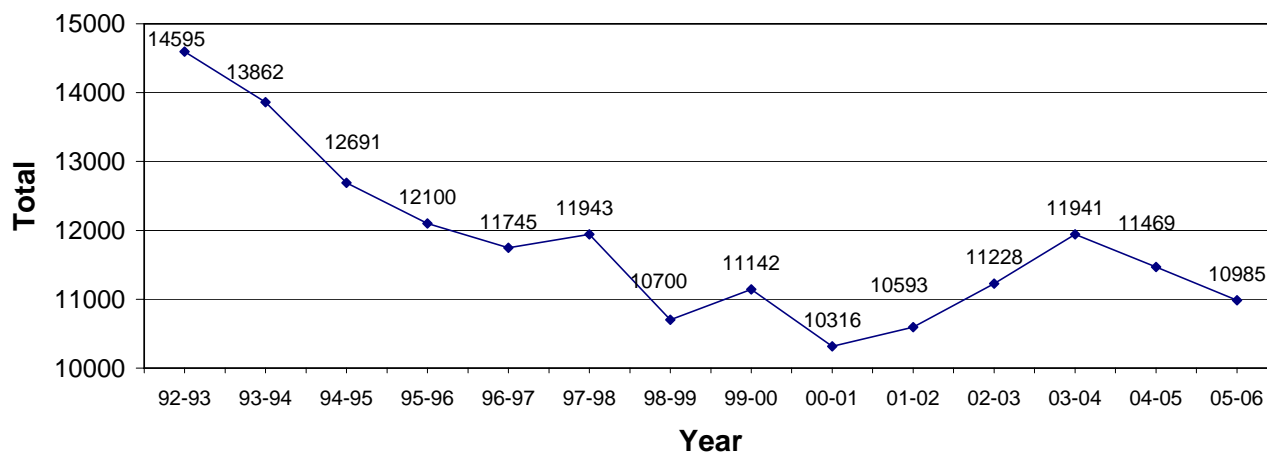


Table 5a

Total Enrolment in Language Courses (1st Year)

University	92-93	93-94	94-95	95-96	96-97	97-98	98-99	99-00	00-01	01-02	02-03	03-04	04-05	05-06
1 Alberta	592	522	450	448	376	392	386	426	298	328	346	338	317	320
2 Brandon	34	38	36	34	24	106	46	24	24	22	20	36	25	21
3 UBC	487	448	366	360	401	432	432	411	522	669	739	600	663	552
4 Brock	221	170	179	206	181	192	182	122	154	82	84	64	182	191
5 Calgary	362	324	284	256	244	197	183	167	169	51	52	226	182	197
6 Dalhousie	904	894	956	1178	1060	1052	545	386	374	291	284	308	243	208
7 Guelph	178	189	147	147	158	164	157	141	155	169	184	235	195	198
8 Lakehead	88	34	57	41	52	46	38	32	28	34	28	28	28	32
9 Laval	319	277	157	171	219	110	165	266	189	262	372	462	552	470
10 McGill	434	382	362	348	349	326	458	416	332	442	418	372	357	345
11 McMaster	396	306	334	207	232	182	169	162	201	215	196	363	226	139
12 Memoria	730	624	654	472	563	535	650	548	595	575	555	468	479	519
13 Montrea	470	432	431	306	394	338	302	780	619	837	841	824	883	731
14 Mount Allison	136	154	137	184	160	139	136	114	88	123	103	117	93	99
15 UNB	234	238	204	205	201	279	188	229	174	246	265	318	248	195
16 Ottawa	222	232	217	224	200	169	170	166	154	201	195	263	246	293
17 Queen's	366	397	375	370	364	358	347	380	314	269	332	347	334	313
18 Regina	469	418	338	326	310	276	201	243	330	316	314	232	226	216
19 Saint Mary's	68	169	162	156	128	141	205	176	174	160	139	183	179	133
20 Toronto	489	538	409	390	457	698	654	946	796	748	876	956	806	802
21 Victoria	397	274	297	368	341	413	320	300	365	441	407	410	352	315
22 Waterloo	664	664	546	615	505	412	391	429	262	337	358	352	532	539
23 W. Ontario	350	342	320	234	302	278	178	250	298	226	296	166	194	230
24 Wilfrid Laurier	185	176	176	155	187	220	156	140	118	118	167	225	208	199
25 Windsor	109	134	130	240	175	144	231	145	158	176	173	170	163	166
26 York	262	204	188	149	250	242	211	202	183	187	209	224	232	252
Total	9166	8580	7912	7790	7833	7841	7101	7601	7074	7525	7953	8287	8145	7675

5a. Total Enrolment in Language Courses (1st Year)

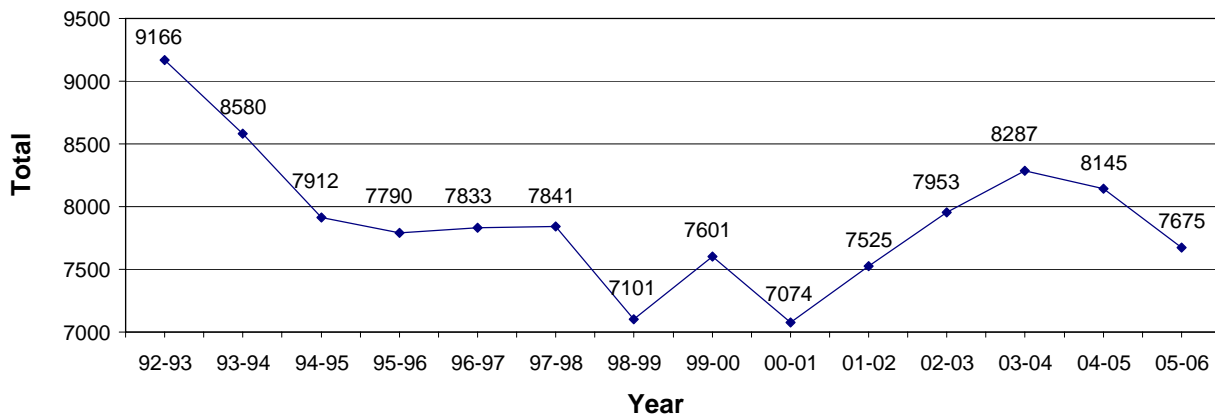


Table 5b

Total Enrolment in Language Courses (2nd Year)

University	92-93	93-94	94-95	95-96	96-97	97-98	98-99	99-00	00-01	01-02	02-03	03-04	04-05	05-06
1 Alberta	194	226	214	152	162	226	156	122	126	100	122	108	142	137
2 Brandon	8	8	10	11	0	13	9	5	6	8	7	4	15	0
3 UBC	225	232	212	181	135	172	225	189	152	206	241	201	202	226
4 Brock	64	40	56	48	29	44	14	71	18	5	16	14	20	14
5 Calgary	151	105	116	119	111	88	81	83	68	73	83	87	56	64
6 Dalhousie	120	88	94	118	123	97	90	80	64	64	102	124	123	86
7 Guelph	38	35	45	37	63	43	29	38	36	38	41	45	39	45
8 Lakehead	0	0	0	0	0	0	0	0	0	0	0	0	0	0
9 Laval	92	130	62	113	74	102	57	80	75	77	82	115	83	100
10 McGill	215	272	245	179	146	164	204	206	211	172	160	159	151	128
11 McMaster	185	85	22	44	144	54	92	120	38	49	43	50	46	47
12 Memorial	56	55	74	24	44	45	53	70	66	76	74	72	70	85
13 Montreal	220	264	168	109	213	281	131	66	192	21	78	49	70	49
14 Mount Allison	38	38	58	60	36	0	18	48	30	31	44	49	51	34
15 UNB	32	32	22	19	12	36	30	28	20	27	25	20	32	28
16 Ottawa	84	52	39	39	22	32	25	34	24	50	43	38	64	54
17 Queen's	218	170	138	114	144	129	49	40	79	77	81	103	65	67
18 Regina	49	62	42	59	64	63	66	64	57	64	29	37	28	27
19 Saint Mary's	20	18	25	29	16	15	30	33	26	28	20	29	38	27
20 Toronto	222	314	280	246	184	233	193	233	219	404	388	418	268	358
21 Victoria	186	206	141	131	134	136	138	155	142	123	141	142	135	85
22 Waterloo	200	155	169	123	112	124	117	108	121	79	72	104	151	147
23 W. Ontario	165	164	108	94	70	92	80	88	27	23	27	78	84	94
24 Wilfrid Laurier	71	32	62	74	72	81	73	65	68	38	99	109	75	55
25 Windsor	34	17	37	29	50	40	29	44	40	35	34	37	61	34
26 York	98	90	74	86	62	114	71	74	52	86	94	92	72	62
Total	2985	2890	2513	2238	2222	2424	2060	2144	1957	1954	2146	2284	2141	2053

5b. Total Enrolment in Language Courses (2nd Year)

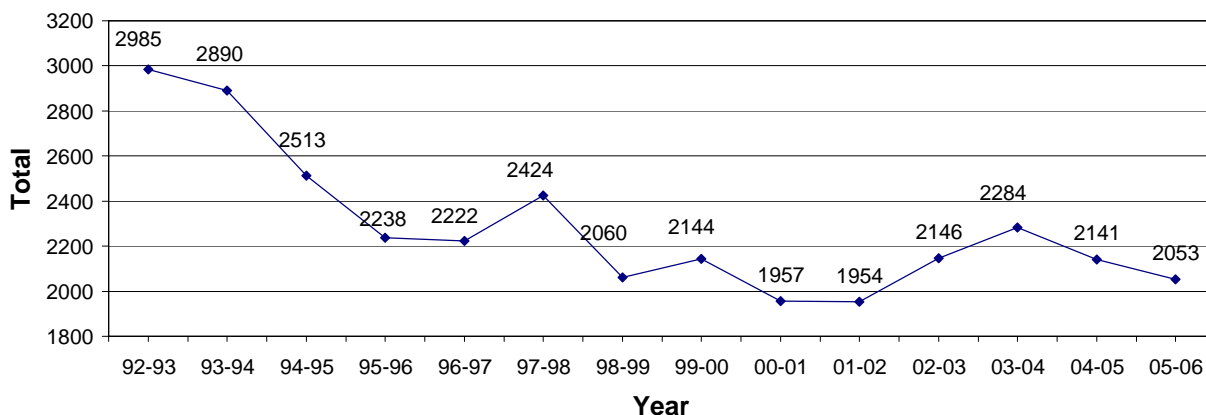


Table 5c

Total Enrolment in Language Courses (3rd Year)

University	92-93	93-94	94-95	95-96	96-97	97-98	98-99	99-00	00-01	01-02	02-03	03-04	04-05	05-06
1 Alberta	97	106	136	132	129	120	56	94	42	58	72	67	71	74
2 Brandon	0	0	0	7	12	0	0	0	0	0	0	0	0	0
3 UBC	107	102	104	110	76	123	85	77	95	91	129	86	85	122
4 Brock	14	22	10	36	16	20	0	40	0	14	0	8	4	15
5 Calgary	85	61	60	52	46	37	44	26	43	24	32	42	41	41
6 Dalhousie	46	32	42	0	0	45	18	26	17	38	36	30	64	53
7 Guelph	9	13	12	28	13	14	8	8	4	8	12	11	15	6
8 Lakehead	0	0	13	0	0	0	0	0	0	0	0	0	0	0
9 Laval	73	34	50	38	0	44	34	54	66	69	47	81	60	100
10 McGill	107	120	122	118	140	134	121	111	106	86	108	87	86	89
11 McMaster	58	183	162	134	55	53	43	43	32	34	27	29	21	41
12 Memoria	34	31	20	33	28	10	20	53	48	59	53	70	60	62
13 Montrea	84	171	187	77	51	78	82	0	0	0	0	0	0	0
14 Mount Allison	22	0	0	19	36	35	20	20	30	20	20	21	34	18
15 UNB	17	10	6	13	7	2	15	6	17	7	9	13	13	16
16 Ottawa	31	31	23	32	30	28	20	20	17	25	26	26	25	48
17 Queen's	157	53	31	60	15	66	40	31	13	0	0	0	0	0
18 Regina	8	15	22	20	15	29	13	14	15	9	11	17	12	16
19 Saint Mary's	0	0	36	0	24	0	0	9	0	18	0	27	10	34
20 Toronto	230	244	186	154	160	101	99	93	99	102	92	117	110	154
21 Victoria	80	92	103	97	56	96	56	97	88	87	68	91	84	41
22 Waterloo	111	77	43	40	66	52	35	57	120	65	33	7	22	44
23 W. Ontario	49	26	24	38	25	34	22	30	16	20	14	19	17	7
24 Wilfrid Laurier	49	20	34	28	28	26	4	6	10	18	35	49	27	26
25 Windsor	20	22	27	26	19	15	17	18	34	15	8	34	24	20
26 York	40	40	52	44	36	44	45	43	28	36	36	52	43	44
Total	1528	1505	1505	1336	1083	1206	897	976	940	903	868	984	928	1071

5c. Total Enrolment in Language Courses (3rd Year)

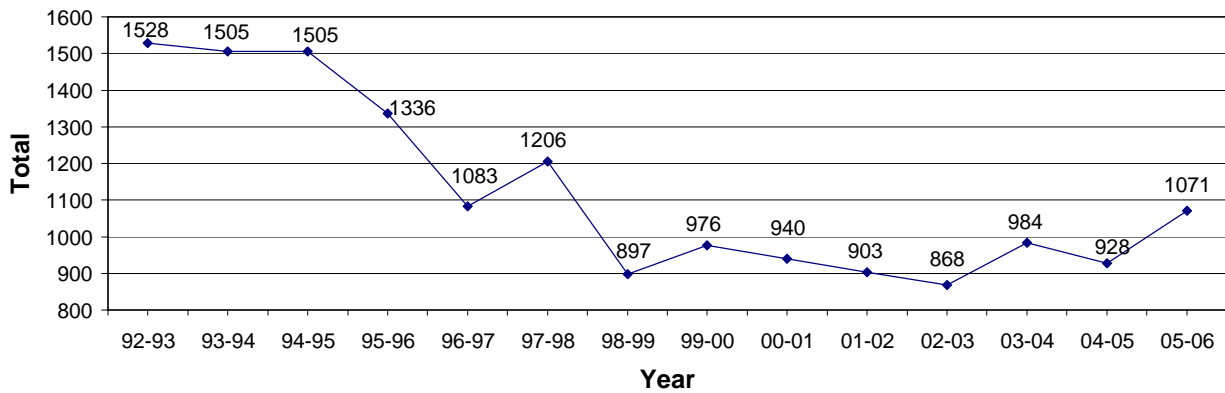


Table 5d

Total Enrolment in Language Courses (4th Year)

University	92-93	93-94	94-95	95-96	96-97	97-98	98-99	99-00	00-01	01-02	02-03	03-04	04-05	05-06
1 Alberta	30	47	16	42	30	28	26	20	36	35	19	40	25	38
2 Brandon	4	0	5	0	0	0	0	0	0	0	0	0	0	0
3 UBC	76	40	64	22	28	28	44	33	35	36	47	53	38	27
4 Brock	15	16	16	28	0	14	16	8	8	2	4	0	0	0
5 Calgary	34	51	47	32	44	12	20	33	19	15	20	12	8	29
6 Dalhousie	32	0	0	0	42	0	40	27	0	0	0	0	0	0
7 Guelph	0	5	3	4	9	4	0	0	0	0	0	0	0	0
8 Lakehead	0	0	0	0	0	0	0	0	0	0	0	0	0	0
9 Laval	10	109	38	38	0	10	51	45	0	0	0	64	0	0
10 McGill	46	45	25	52	43	39	21	17	34	0	17	17	15	10
11 McMaster	0	84	83	41	30	45	38	23	20	21	11	6	8	0
12 Memoria	0	0	6	0	0	0	0	0	0	0	0	10	0	0
13 Montreal	150	122	148	211	88	54	146	0	0	0	0	0	0	0
14 Mount Allison	20	26	12	19	26	12	0	0	0	0	0	0	0	0
15 UNB	0	4	0	0	7	6	2	11	3	5	4	8	4	4
16 Ottawa	0	30	43	41	30	4	31	0	0	0	0	0	0	0
17 Queen's	130	38	34	8	33	0	10	16	0	0	31	17	18	20
18 Regina	0	0	0	0	0	0	0	0	0	7	2	8	4	0
19 Saint Mary's	0	0	10	0	12	0	0	0	0	0	0	0	0	0
20 Toronto	192	124	77	62	54	75	22	47	73	0	17	55	24	20
21 Victoria	46	38	18	44	37	19	88	99	32	45	60	60	56	12
22 Waterloo	36	21	27	0	0	10	21	0	47	0	0	0	0	0
23 W. Ontario	24	22	0	7	27	22	12	19	0	0	0	12	0	0
24 Wilfrid Laurier	29	20	49	33	22	25	3	7	12	8	10	6	0	0
25 Windsor	0	21	16	30	17	23	11	5	0	21	0	0	20	2
26 York	42	24	24	22	28	42	40	11	26	16	19	18	35	24
Total	916	887	761	736	607	472	642	421	345	211	261	386	255	186

5d. Total Enrolment in Language Courses (4th Year)

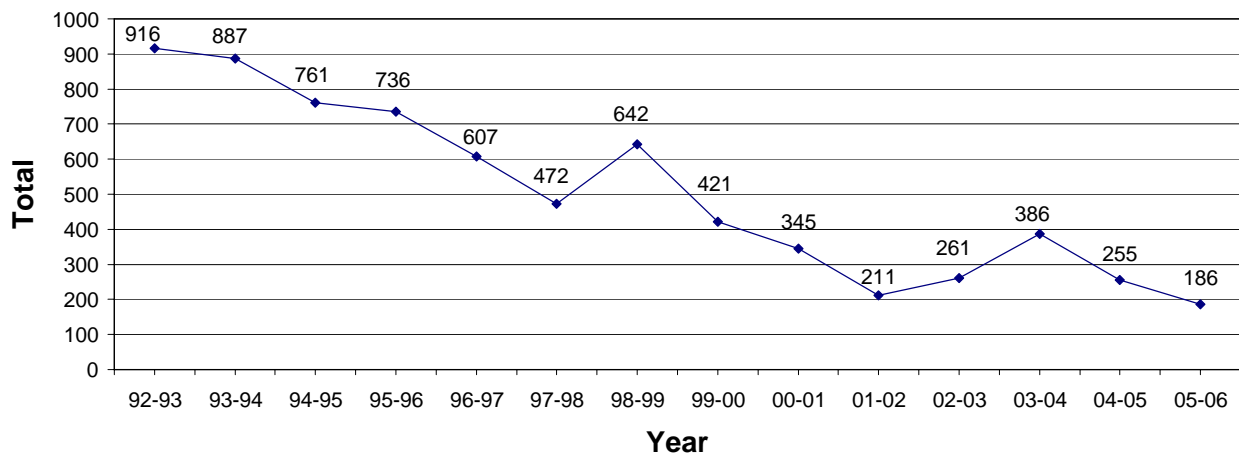


Table 6

Total Enrolment in Reading Courses

University	92-93	93-94	94-95	95-96	96-97	97-98	98-99	99-00	00-01	01-02	02-03	03-04	04-05	05-06
1 Alberta	107	192	122	104	62	70	76	56	48	46	34	48	52	46
2 Brandon	0	0	0	0	0	0	0	0	0	0	0	0	0	0
3 UBC	87	118	164	222	250	192	242	587	879	221	399	386	581	426
4 Brock	0	0	0	0	0	0	0	0	0	0	0	0	0	0
5 Calgary	123	116	112	115	113	97	88	91	105	4	4	6	0	0
6 Dalhousie	82	100	74	0	77	0	12	0	1	27	36	40	34	20
7 Guelph	0	0	0	0	5	0	0	0	0	0	0	0	0	0
8 Lakehead	0	0	0	0	0	0	0	0	4	0	0	0	0	0
9 Laval	10	39	112	51	0	32	14	0	0	0	0	0	0	0
10 McGill	5	24	30	1	2	7	18	5	0	0	0	0	31	0
11 McMaster	0	0	0	0	0	0	0	0	0	0	0	0	0	0
12 Memoria	29	0	0	19	0	18	0	0	0	0	0	0	25	0
13 Montrea	76	77	57	59	102	88	0	0	0	9	5	21	6	13
14 Mount Allison	0	0	0	0	0	0	0	0	0	0	0	0	0	0
15 UNB	280	137	262	228	196	149	87	0	82	49	44	54	79	39
16 Ottawa	4	0	0	0	0	0	0	0	13	0	0	20	0	0
17 Queen's	0	0	0	0	0	0	0	13	28	37	60	88	113	113
18 Regina	0	0	4	0	0	1	4	1	0	1	1	0	0	0
19 Saint Mary's	5	0	0	0	0	0	0	0	0	0	0	0	0	0
20 Toronto	51	171	80	85	84	65	58	36	62	39	104	40	72	38
21 Victoria	26	22	20	26	17	39	27	6	29	1	0	0	0	0
22 Waterloo	29	29	9	27	9	8	0	0	5	0	0	0	2	0
23 W. Ontario	0	40	64	0	0	0	6	0	0	14	11	0	0	1
24 Wilfrid Laurier	0	0	0	0	0	0	0	0	0	0	0	0	0	0
25 Windsor	0	0	0	0	0	0	0	0	0	0	0	22	0	0
26 York	0	0	0	0	6	36	18	16	16	9	0	0	0	0
Total	914	1065	1110	937	923	802	650	811	1272	457	698	725	995	696

6. Total Enrolment in Reading Courses

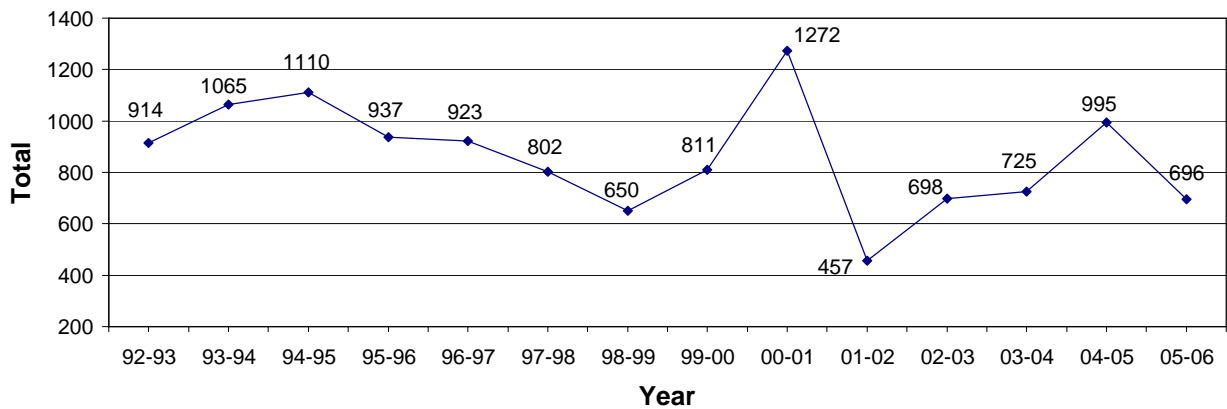


Table 7

Total Enrolment in Culture/German Studies

University	92-93	93-94	94-95	95-96	96-97	97-98	98-99	99-00	00-01	01-02	02-03	03-04	04-05	05-06
1 Alberta	46	36	17	36	55	42	50	15	21	0	13	10	9	0
2 Brandon	0	3	0	0	1	11	0	0	0	0	0	0	0	0
3 UBC	52	0	0	0	0	0	0	0	0	0	0	0	0	0
4 Brock	0	0	40	77	65	0	42	14	0	86	69	0	0	0
5 Calgary	0	14	26	19	28	9	41	38	41	143	177	18	13	22
6 Dalhousie	20	12	22	62	31	5	86	0	0	0	0	19	9	0
7 Guelph	0	13	15	0	18	18	6	5	11	15	13	12	16	14
8 Lakehead	0	0	0	0	0	0	0	0	0	0	0	0	0	0
9 Laval	20	9	6	0	10	7	10	0	0	13	0	9	0	0
10 McGill	5	17	22	14	6	0	0	0	0	0	0	14	0	0
11 McMaster	0	0	0	0	0	0	0	18	11	15	6	0	19	27
12 Memorial	0	0	0	0	0	3	0	0	0	0	0	0	0	0
13 Montreal	112	21	12	38	23	16	44	35	52	62	46	38	69	83
14 Mount Allison	0	9	0	0	0	28	0	0	0	0	0	0	0	0
15 UNB	0	0	18	12	9	0	6	75	0	52	0	28	24	16
16 Ottawa	0	0	58	0	0	0	0	0	0	12	0	0	0	0
17 Queen's	0	0	0	40	56	78	64	10	42	27	26	57	38	34
18 Regina	0	0	0	2	0	6	0	9	1	3	7	13	11	9
19 Saint Mary's	0	0	0	0	0	0	4	4	2	0	0	0	0	0
20 Toronto	0	0	0	0	0	17	26	24	0	66	40	42	0	45
21 Victoria	0	0	0	37	35	41	59	44	102	64	30	60	83	0
22 Waterloo	180	242	252	189	98	146	108	154	103	187	154	181	0	0
23 W. Ontario	0	11	22	10	0	0	0	0	0	0	0	0	0	0
24 Wilfrid Laurier	0	0	0	0	0	0	0	11	17	11	31	38	0	0
25 Windsor	0	0	0	0	0	0	0	0	0	0	0	0	42	0
26 York	0	0	12	0	13	12	8	0	0	0	0	12	0	0
Total	435	387	522	536	448	439	554	456	403	756	612	551	333	250

7. Total Enrolment in Culture/German Studies

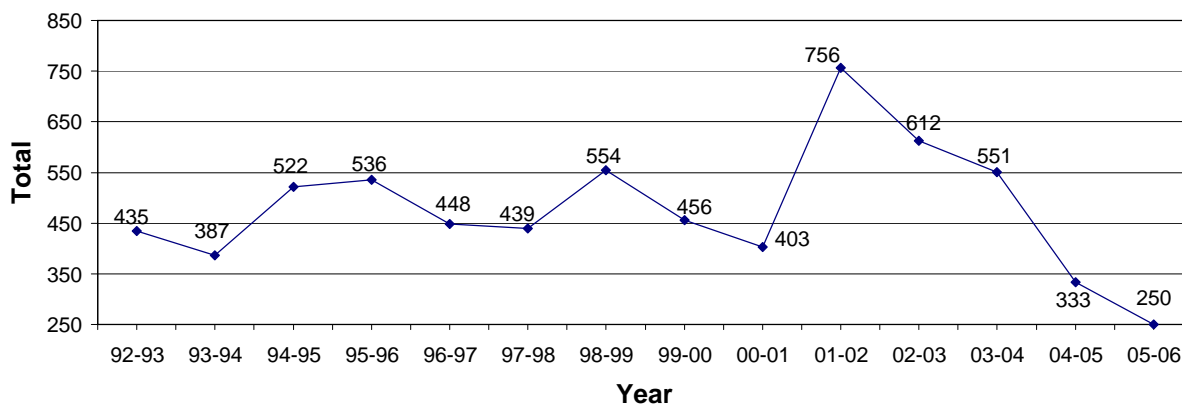


Table 8

Total Enrolment in Culture/German Studies in Translation

University	92-93	93-94	94-95	95-96	96-97	97-98	98-99	99-00	00-01	01-02	02-03	03-04	04-05	05-06
1 Alberta	0	0	0	0	0	0	0	7	9	0	0	6	11	10
2 Brandon	0	0	0	0	0	0	0	0	0	0	0	0	0	0
3 UBC	0	0	0	8	8	0	12	14	6	0	103	127	0	289
4 Brock	0	58	0	0	0	0	0	0	0	0	0	41	28	24
5 Calgary	0	31	37	37	31	0	59	0	40	40	68	59	153	131
6 Dalhousie	0	32	0	14	24	11	522	366	326	441	522	611	325	366
7 Guelph	11	0	0	0	0	0	10	11	13	18	15	12	27	22
8 Lakehead	0	0	0	0	0	0	0	0	0	0	0	0	0	0
9 Laval	0	12	0	0	0	0	10	21	7	0	0	0	0	0
10 McGill	0	8	0	12	0	0	0	0	131	26	61	95	110	0
11 McMaster	0	12	0	0	22	0	9	0	0	0	12	0	9	0
12 Memoria	28	35	31	34	35	45	37	96	119	105	105	60	109	65
13 Montreal	0	21	25	42	0	0	0	39	33	30	41	35	72	51
14 Mount Allison	77	97	94	89	83	51	51	19	49	94	65	28	0	59
15 UNB	0	0	0	0	0	0	0	0	28	0	13	0	0	0
16 Ottawa	36	26	39	0	52	0	27	0	16	0	39	43	69	102
17 Queen's	34	55	35	0	0	54	0	0	0	0	27	20	26	78
18 Regina	0	0	0	0	0	0	0	0	0	9	0	0	0	0
19 Saint Mary's	0	0	0	0	0	0	0	2	0	0	5	32	37	34
20 Toronto	64	58	0	135	190	121	142	110	61	22	18	17	70	118
21 Victoria	72	35	37	0	0	0	0	0	28	160	215	232	268	428
22 Waterloo	0	0	0	0	0	0	8	0	5	0	0	3	245	229
23 W. Ontario	68	42	27	0	0	0	44	0	0	0	10	0	0	0
24 Wilfrid Laurier	0	0	0	0	0	0	153	147	0	57	0	38	0	0
25 Windsor	48	90	73	42	39	27	88	71	51	60	52	0	0	31
26 York	0	84	120	75	84	92	130	156	153	140	103	104	151	203
Total	438	696	518	488	568	401	1302	1059	1075	1202	1474	1563	1710	2240

8. Total Enrolment in Culture/German Studies in Translation

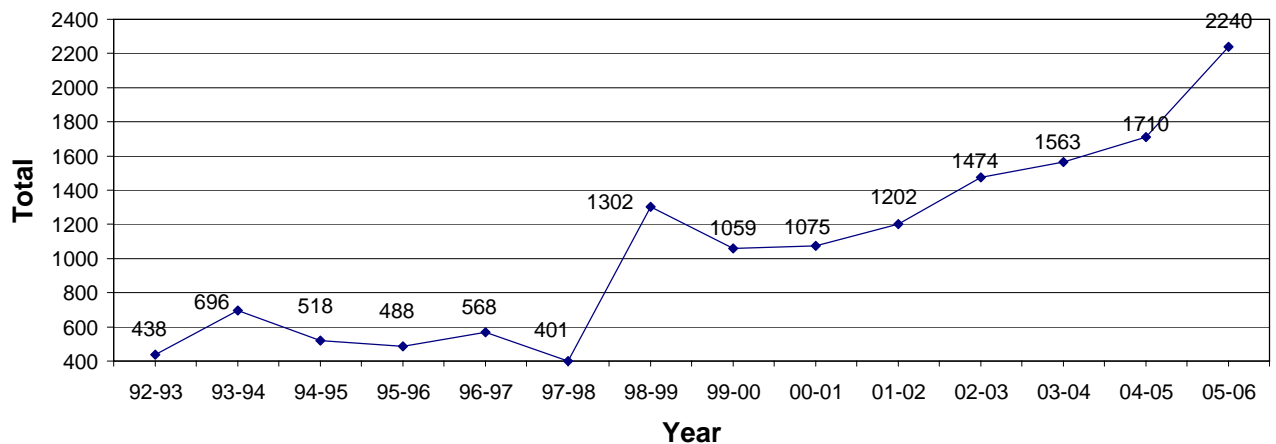


Table 9
Total Enrolment in Literature

University	92-93	93-94	94-95	95-96	96-97	97-98	98-99	99-00	00-01	01-02	02-03	03-04	04-05	05-06
1 Alberta	46	62	48	58	33	36	34	45	30	36	37	31	39	33
2 Brandon	0	0	0	1	11	2	0	0	0	0	0	0	0	0
3 UBC	142	123	131	128	72	119	79	79	59	73	92	320	0	124
4 Brock	8	38	29	35	37	31	12	56	10	0	0	14	4	5
5 Calgary	75	93	75	103	80	61	18	41	35	22	37	23	0	8
6 Dalhousie	70	98	124	50	56	80	74	74	92	74	109	94	73	68
7 Guelph	35	37	27	29	32	29	12	26	20	32	29	28	27	25
8 Lakehead	0	0	0	0	0	0	0	0	0	0	0	0	0	0
9 Laval	19	13	19	0	45	0	7	0	0	20	13	4	0	0
10 McGill	107	120	143	183	193	90	76	103	50	85	53	54	92	51
11 McMaster	74	40	87	73	40	37	30	42	19	29	27	25	16	0
12 Memorial	14	44	19	43	35	20	9	1	8	14	19	26	17	19
13 Montreal	128	150	58	92	109	90	84	68	80	64	79	45	69	84
14 Mount Allison	27	29	37	31	22	12	11	18	25	32	23	22	22	13
15 UNB	20	4	9	6	15	1	3	0	4	0	0	26	18	0
16 Ottawa	40	43	39	69	0	30	19	11	0	8	8	8	11	13
17 Queen's	24	69	67	76	21	35	28	60	48	53	42	20	32	29
18 Regina	9	7	26	20	21	10	11	5	14	13	2	4	8	8
19 Saint Mary's	0	8	4	44	0	23	2	0	1	0	0	0	12	0
20 Toronto	206	270	219	175	155	135	161	131	141	167	142	138	77	107
21 Victoria	236	50	50	62	59	46	45	131	74	68	69	89	0	0
22 Waterloo	123	110	95	79	90	75	70	81	58	94	24	18	12	19
23 W. Ontario	86	60	27	51	54	24	0	37	38	46	46	40	29	22
24 Wilfrid Laurier	62	58	40	32	32	30	0	8	7	0	7	0	13	0
25 Windsor	25	26	16	14	1	5	0	0	4	7	5	4	0	3
26 York	125	120	64	56	58	33	58	74	30	18	15	26	11	27
Total	1701	1672	1453	1510	1271	1054	843	1091	847	955	878	1059	582	658

9. Total Enrolment in Literature

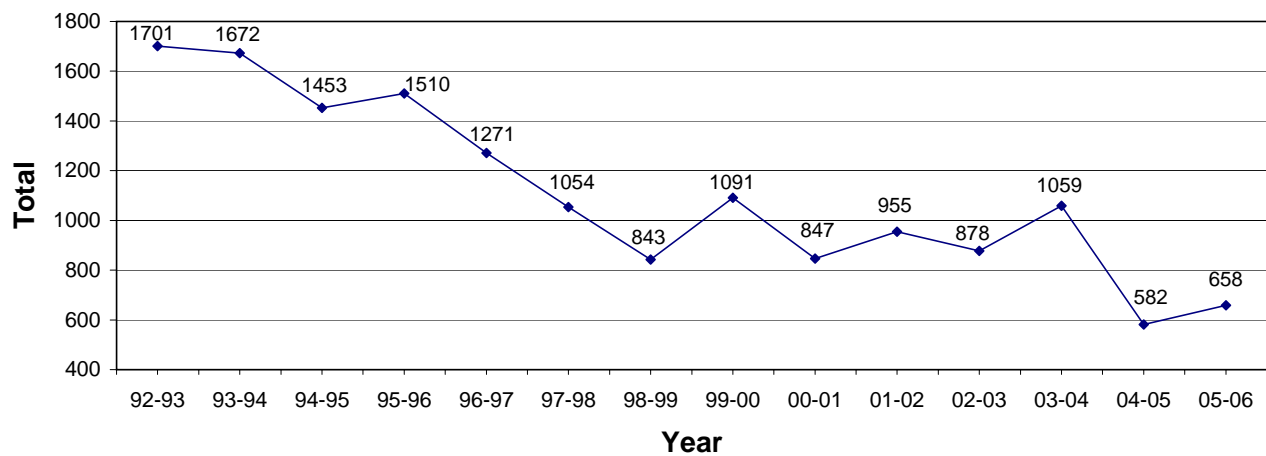


Table 10
Total Enrolment in Literature in Translation

University	92-93	93-94	94-95	95-96	96-97	97-98	98-99	99-00	00-01	01-02	02-03	03-04	04-05	05-06
1 Alberta	0	0	0	10	0	0	0	10	0	0	0	0	0	0
2 Brandon	0	0	0	0	0	0	0	0	0	0	0	0	0	0
3 UBC	40	138	24	19	69	75	140	106	113	138	161	239	400	312
4 Brock	0	0	0	0	0	0	3	0	0	0	0	0	0	0
5 Calgary	35	0	0	0	42	0	24	22	0	8	0	11	0	14
6 Dalhousie	0	26	20	0	26	36	0	28	0	0	0	0	0	0
7 Guelph	0	0	0	0	0	34	4	6	8	6	10	21	5	0
8 Lakehead	0	0	0	0	0	0	0	0	0	0	0	0	0	0
9 Laval	0	6	0	0	0	0	65	0	25	12	0	33	0	0
10 McGill	22	22	62	52	31	40	137	80	24	137	146	0	78	102
11 McMaster	0	16	24	12	10	27	18	15	0	40	0	0	0	10
12 Memoria	99	60	0	0	0	0	0	3	0	0	0	0	2	35
13 Montrea	0	30	20	18	0	0	15	24	0	0	0	50	25	31
14 Mount Allison	0	0	0	0	0	0	0	0	0	0	0	0	0	0
15 UNB	0	0	0	0	0	0	0	0	8	5	0	3	12	11
16 Ottawa	89	0	0	0	0	0	0	0	9	16	0	18	0	32
17 Queen's	0	100	24	42	60	0	49	61	30	7	11	24	22	11
18 Regina	0	4	0	0	0	14	9	7	0	0	0	0	0	0
19 Saint Mary's	5	0	0	0	0	0	0	0	0	0	0	0	0	0
20 Toronto	22	0	25	74	0	0	22	22	76	18	32	29	32	20
21 Victoria	0	0	0	0	9	7	0	0	0	0	0	0	224	82
22 Waterloo	0	0	0	0	0	0	0	0	0	0	0	4	0	0
23 W. Ontario	0	0	0	0	0	0	0	0	0	0	0	25	0	0
24 Wilfrid Laurier	0	0	0	0	0	0	0	0	0	0	0	0	0	0
25 Windsor	0	0	0	0	19	0	12	15	0	8	59	40	25	82
26 York	0	0	0	40	20	14	0	0	0	44	0	22	0	52
Total	312	402	199	267	286	247	498	399	293	439	419	519	825	794

10. Total Enrolment in Literature in Translation

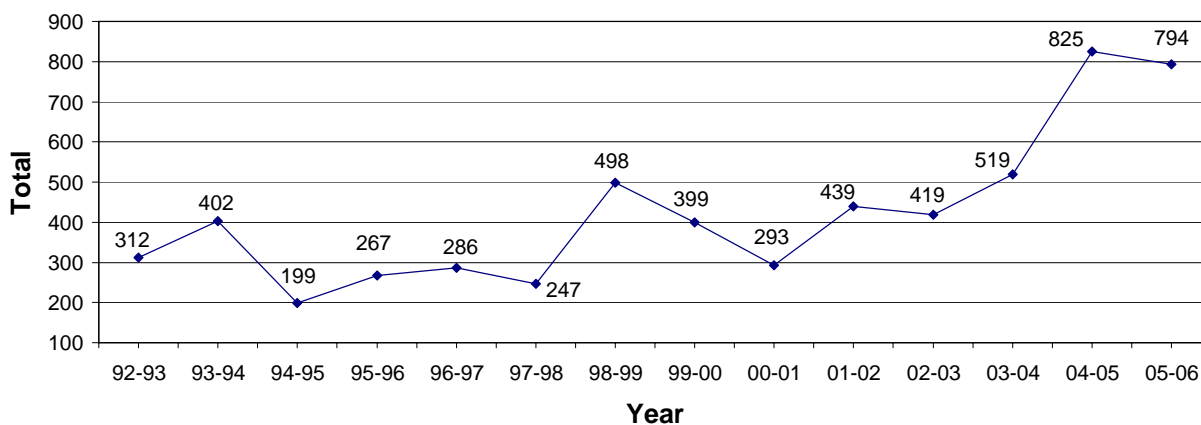


Table 11

CAUTG Enrolment Survey - Colleges

College	92-93	93-94	94-95	95-96	96-97	97-98	98-99	99-00	00-01	01-02	02-03	03-04	04-05	05-06
1 CÉGEP Ahuntsic	n.d.	210	87	226	200	212	n.d.	215	n.d.	155	240	n.d.	n.d.	165
2 Brescia College	n.d.	n.d.	n.d.	n.d.	n.d.	n.d.	n.d.	40	60	36	24	18	8	cancl.
3 Capilano College	n.d.	n.d.	n.d.	n.d.	113	103	n.d.	134	129	n.d.	116	120	143	120
4 Cariboo College	n.d.	n.d.	n.d.	122	143	130	n.d.	n.d.	156	124	210	n.d.	n.d.	n.d.
5 C. Champlain St. Laur.	n.d.	121	145	n.d.	n.d.	n.d.	n.d.	n.d.	n.d.	n.d.	220	n.d.	n.d.	n.d.
6 Dawson College	220	n.d.	n.d.	n.d.	n.d.	n.d.	n.d.	n.d.	n.d.	n.d.	n.d.	n.d.	n.d.	n.d.
7 Douglas College	n.d.	106	130	83	92	113	n.d.	170	168	185	180	170	164	129
8 C. Francois-Xavier-Garneau	n.d.	n.d.	n.d.	n.d.	n.d.	n.d.	n.d.	n.d.	n.d.	n.d.	n.d.	n.d.	240	n.d.
9 U.-College Fraser Valley	n.d.	n.d.	n.d.	n.d.	n.d.	n.d.	n.d.	n.d.	51	42	0	cancl.	cancl.	n.d.
10 Grande Prairie Regional C.	n.d.	n.d.	n.d.	n.d.	n.d.	n.d.	n.d.	n.d.	cancl.	n.d.	n.d.	n.d.	n.d.	n.d.
11 Grant MacEwan College	n.d.	n.d.	34	53	88	96	60	110	125	91	72	112	97	89
12 College Jean-de-Brébeuf	n.d.	n.d.	n.d.	75	n.d.	n.d.	n.d.	n.d.	n.d.	n.d.	n.d.	n.d.	n.d.	n.d.
13 John Abbott College	176	175	n.d.	168	n.d.	n.d.	n.d.	n.d.	n.d.	n.d.	n.d.	n.d.	n.d.	n.d.
14 C. Joliette-de-Lanoulière	n.d.	n.d.	n.d.	n.d.	n.d.	44	n.d.	n.d.	n.d.	n.d.	n.d.	n.d.	n.d.	n.d.
15 Kwantlen U.-College	n.d.	n.d.	n.d.	n.d.	n.d.	n.d.	n.d.	93	135	149	140	145	165	125
16 Langara College	n.d.	n.d.	127	149	166	n.d.	4	cancl.	n.d.	n.d.	n.d.	n.d.	n.d.	n.d.
17 CÉGEP Lévis-Lauzon	107	145	183	212	260	360	n.d.	242	n.d.	326	n.d.	n.d.	n.d.	n.d.
18 Collège de Limoilou	n.d.	n.d.	n.d.	n.d.	n.d.	176	n.d.	n.d.	n.d.	n.d.	n.d.	n.d.	n.d.	n.d.
19 CÉGEP Marie-Victorin	n.d.	n.d.	n.d.	47	80	57	n.d.	49	30	30	30	30	30	0
20 CÉGEP de Maisonneuve	n.d.	123	n.d.	228	n.d.	n.d.	n.d.	n.d.	n.d.	n.d.	n.d.	n.d.	n.d.	n.d.
21 Malaspina U.-College	n.d.	n.d.	n.d.	n.d.	n.d.	n.d.	n.d.	n.d.	0	0	0	0	n.d.	0
22 Marianopolis College	n.d.	316	n.d.	n.d.	n.d.	n.d.	n.d.	n.d.	n.d.	n.d.	n.d.	n.d.	n.d.	n.d.
23 Collège Marie de France	n.d.	n.d.	n.d.	n.d.	n.d.	74	n.d.	n.d.	n.d.	n.d.	n.d.	n.d.	n.d.	116
24 Medicine Hat College	24	n.d.	n.d.	n.d.	n.d.	n.d.	n.d.	n.d.	n.d.	n.d.	n.d.	n.d.	n.d.	n.d.
25 CÉGEP Montmorency	141	142	152	n.d.	187	213	n.d.	n.d.	n.d.	n.d.	n.d.	n.d.	n.d.	n.d.
26 Okanagan College	n.d.	200	150	143	n.d.	n.d.	n.d.	180	122	100	102	118	n.d.	n.d.
27 Mount Royal College	n.d.	180	n.d.	159	n.d.	155	n.d.	n.d.	301	n.d.	n.d.	n.d.	n.d.	n.d.
28 N. American Baptist College	n.d.	n.d.	22	11	n.d.	20	n.d.	n.d.	n.d.	n.d.	n.d.	n.d.	n.d.	n.d.
29 CÉGEP Rivière-du-Loup	n.d.	18	n.d.	n.d.	n.d.	n.d.	n.d.	n.d.	n.d.	n.d.	n.d.	n.d.	n.d.	n.d.
30 Collège de Rosemont	167	183	217	n.d.	190	160	n.d.	n.d.	n.d.	n.d.	n.d.	n.d.	n.d.	n.d.
31 CÉGEP Sainte-Foy	n.d.	n.d.	265	n.d.	355	n.d.	n.d.	n.d.	n.d.	n.d.	n.d.	n.d.	n.d.	n.d.
32 CÉGEP de St.-Jérôme	n.d.	n.d.	n.d.	123	120	136	n.d.	n.d.	n.d.	n.d.	50	cancl.	cancl.	n.d.
33 Collège de Sherbrooke	n.d.	n.d.	n.d.	n.d.	136	n.d.	n.d.	n.d.	n.d.	n.d.	n.d.	n.d.	n.d.	n.d.
34 CÉGEP de Trois-Rivières	n.d.	n.d.	100	n.d.	n.d.	n.d.	n.d.	n.d.	n.d.	n.d.	n.d.	n.d.	n.d.	n.d.
35 Collège de Vanier	n.d.	n.d.	201	199	n.d.	n.d.	n.d.	107	n.d.	n.d.	n.d.	n.d.	174	155
36 CÉGEP du Vieux-Montréal	n.d.	n.d.	180	278	185	210	n.d.	n.d.	n.d.	n.d.	n.d.	n.d.	n.d.	n.d.

There were replies from 10 colleges. The teacher who is usually at CÉGEP Marie-Victorin taught this year instead in the high school program at Collège International Marie de France, Montréal, with good numbers (116). The German program at Brescia College was phased out.

Table 12
Graduate Enrolments and Degrees Awarded

2002-2003				Degrees Awarded		
	M.A.	Ph.D.	Total	M.A.	Ph.D.	Total
1 Alberta	7	6	13	1	0	1
2 UBC	11	7	18	N.D.	N.D.	0
3 Calgary	1	0	1	0	0	0
4 Dalhousie	7	0	7	6	0	6
5 McGill	12	10	22	4	0	4
6 Memorial	5	0	5	1	0	1
7 Montréal	7	3	10	1	0	1
8 Queen's	3	7	10	1	2	3
9 Toronto	5	14	19	5	0	5
10 Waterloo	12	2	14	7	0	7
Totals	70	49	119	26	2	28

2003-2004				Degrees Awarded		
	M.A.	Ph.D.	Total	M.A.	Ph.D.	Total
1 Alberta	6	7	13	1	0	1
2 UBC	8	6	14	3	1	4
3 Calgary	2	0	2	0	0	0
4 Dalhousie	6	0	6	4	0	4
5 McGill	9	8	17	3	1	4
6 Memorial	5	0	5	1	0	1
7 Montréal	8	2	10	2	2	4
8 Queen's	6	6	12	0	0	0
9 Toronto	9	4	13	5	2	7
10 Victoria	1	0	1	0	0	0
11 Waterloo	16	5	21	11	0	11
Totals	76	38	114	30	6	36

2004-2005				Degrees Awarded		
	M.A.	Ph.D.	Total	M.A.	Ph.D.	Total
1 Alberta	7	3	10	3	0	3
2 UBC	5	5	10	N.D.	N.D.	0
3 Calgary	4	0	4	0	0	0
4 Dalhousie	4	0	4	4	0	4
5 McGill	7	7	14	4	1	5
6 Memorial	2	0	2	1	0	1
7 Montréal	6	2	8	N.D.	N.D.	0
8 Queen's	5	7	12	3	2	5
9 Toronto	7	8	15	3	3	6
10 Victoria	3	0	3	0	0	0
11 Waterloo	18	6	24	11	0	11
Totals	68	38	106	29	6	35

2005-2006				Degrees Awarded		
	M.A.	Ph.D.	Total	M.A.	Ph.D.	Total
1 Alberta	11	3	14	2	0	2
2 UBC	6	5	11	3	0	3
3 Calgary	6	0	6	1	0	1
4 Dalhousie	4	0	4	4	0	4
5 Manitoba*	1	0	1	0	0	0
6 McGill	4	7	11	0	0	0
7 Memorial	1	0	1	0	0	0
8 Montréal	16	3	19	1	1	2
9 Queen's	6	11	17	2	1	3
10 Toronto	4	10	14	5	3	8
11 Victoria	4	0	4	0	0	0
12 Waterloo	16	6	22	13	1	14
Totals	79	45	124	31	6	37

* First M.A. student in over a decade. Honours will be reintroduced in September 2006.

There were 124 graduate students enrolled in 2005-2006, compared to 106 the previous year. The M.A.s increased by 11 and the Ph.D.s increased by 7 for an overall increase in graduate enrolment of 18.

The number of M.A.s awarded increased this year by 2, and the number of Ph.D.s awarded remained the same, for an overall increase in graduate degrees awarded of 2.

Table 13
Film Courses

Universities	2003-2004	2004-2005	2005-2006
Bishop's	0	0	10
Calgary	37	46	50
Dalhousie	610	322	348
Guelph	0	10	11
Laurentian	0	0	13
Manitoba	0	0	8
McMaster	0	0	7
Memorial	60	60	0
Montréal	50	35	15
Mount Allison	28	0	0
UNB	17	18	0
Ottawa	23	48	0
Queens	0	26	32
Toronto	17	14	4
Vicotria	185	260	338
Waterloo	32	5	11
Wilfrid Laurier	0	24	0
York	0	0	30
TOTAL	1059	868	877

In 2005-2006, 13 universities offered film courses compared to 12 last year, for a total enrolment of 877, or 9 more than last year.

Table 14
Average Class Size - 1st Year Language for 44 Universities

Mount St. Vincent	12
Trinity Western	12
Lakehead	16
PEI	16
Simon Fraser	16
Concordia	19
UBC	20
Brock	20
Brandon	21
Queen's	21
Augustana	22
Regina	22
Bishop's	23
Dalhousie	23
Carleton	24
Victoria	24
Waterloo*	24
Winnipeg	24
Alberta	25
Laval	25
Lethbridge	25
Montréal	25
Mount Allison	25
Trent	25
York	25
U of T**	25
Manitoba	27
McGill	27
Calgary	28
UNB	28
Wilfrid Laurier	28
Memorial	29
UTMississauga	29
Western Ontario	29
Saint Mary's	30
Saskatchewan	30
Acadia	31
Laurentian	31
Athabasca	32
Ottawa	33
Windsor	33
McMaster	35
Saint Francis X.	35
Guelph	99

Range	12 - 99
Median	25
Mean	27

* 24 is the on-campus average. When large distance ed. courses are added, the average jumps to 53.9.

** All previous tables for Toronto included UTMississauga numbers. They are listed separately in this table and in the following one.

Table 15
Undergraduate Program Enrolments
and Degrees Awarded for 30 Universities

	Majors	Minors	Honours	Total	Degrees Awarded		
					BA	BAH	Total
Acadia	18	N.D.	0	18	3	0	3
Alberta	22	38	0	60	6	0	6
UBC	12	3	2	17	8	2	10
Brock	0	11	0	11	N.D.	N.D.	0
Calgary	26	23	0	49	1	0	1
Concordia	23	74	1	98	N.D.	N.D.	0
Dalhousie	14	N/A	3	17	4	3	7
Guelph	N/A	13	N/A	13	0	0	0
Lethbridge	3	0	0	3	N.D.	N.D.	0
Manitoba	7	25	2	34	4	0	4
McGill	12	61	5	78	4	2	6
Memorial	45	29	2	76	6	1	7
Montréal	12	13	28	53	5	0	5
Mount Allison	0	11	0	11	1	0	1
UNB	5	10	2	17	N.D.	N.D.	0
Ottawa	0	13	0	13	0	0	0
Queen's	16	26	8	50	0	7	7
Regina	12	8	0	20	1	0	1
Saint Mary's	10	8	0	18	0	0	0
Saskatchewan	2	3	0	5	0	0	0
U of T (Toronto)	31	63	10	104	24	3	27
UTMississauga	20	58	N/A	78	12	0	12
Trent	N.D.	N.D.	9	9	N.D.	4	4
Victoria	17	9	3	29	7	1	8
Waterloo	24	10	24	58	1	3	4
W. Ontario	7	13	2	22	1	3	4
W. Laurier	3	N.D.	8	11	0	4	4
Windsor	21	3	13	37	2	0	2
Winnipeg	8	0	0	8	0	0	0
York	20	5	0	25	2	0	2
Totals				1042			125

Table 16
Comparison of Enrolments in Language, Reading, Culture Taught in German (Kultur), Culture Taught in Translation (Culture), Literature Taught in German (Literatur), and Literature Taught in Translation (Literature) Courses from 1992-2006

	92-93	93-94	94-95	95-96	96-97	97-98	98-99	99-00	00-01	01-02	02-03	03-04	04-05	05-06
Lang.	14595	13862	12691	12100	11745	11943	10700	11142	10316	10593	11228	11941	11469	10985
Reading	914	1065	1110	937	923	802	650	811	1272	457	698	725	995	696
Kultur	435	387	522	536	448	439	554	456	403	756	612	551	333	250
Culture	438	696	518	488	568	401	1302	1059	1075	1202	1474	1563	1710	2240
Literatur	1701	1672	1453	1510	1271	1054	843	1091	847	955	878	1059	582	658
Literature	312	402	199	267	286	247	498	399	293	439	419	519	825	794

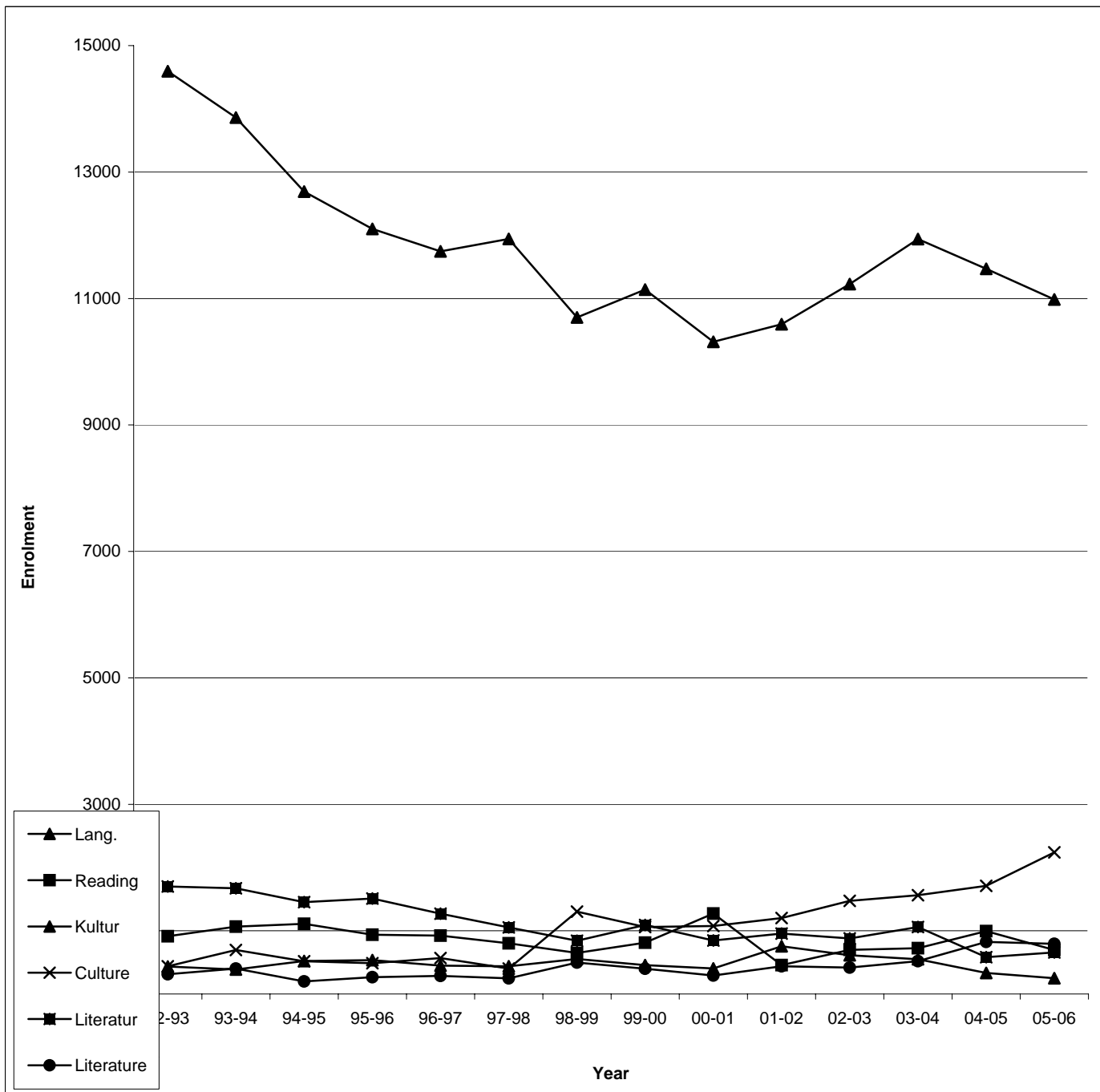


Table 17
Comparison of Enrolments in Language, Reading, Culture Taught in German (Kultur), Culture Taught in Translation (Culture), Literature Taught in German (Literatur), and Literature Taught in Translation (Literature) Courses in 2005-2006

	2005-06
Language	10985
Culture	2240
Literature	794
Reading	696
Literatur	658
Kultur	250

