

Study Buddies

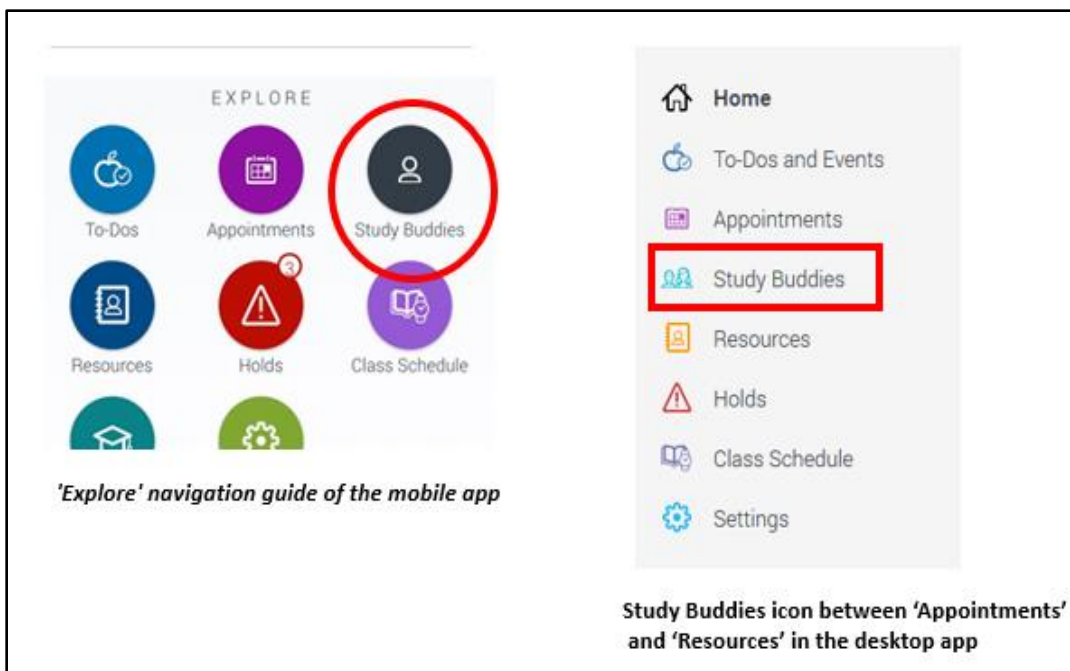
What is Study Buddies? The Study Buddies feature is intended to allow Memorial students to connect with other students in their class sections who are interested in studying together outside of class. This is a great way to catch up on what you may have missed in class.

Who can use Study Buddies? Any Memorial student who is currently enrolled in a course, offered at St John's campus, remotely or by distance education.

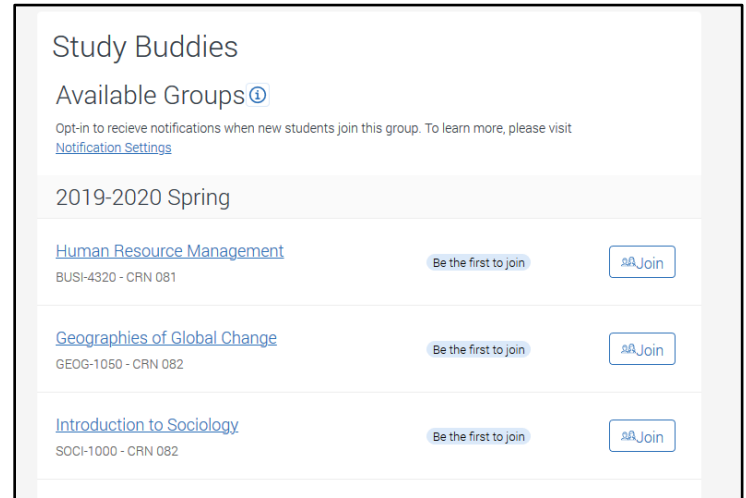
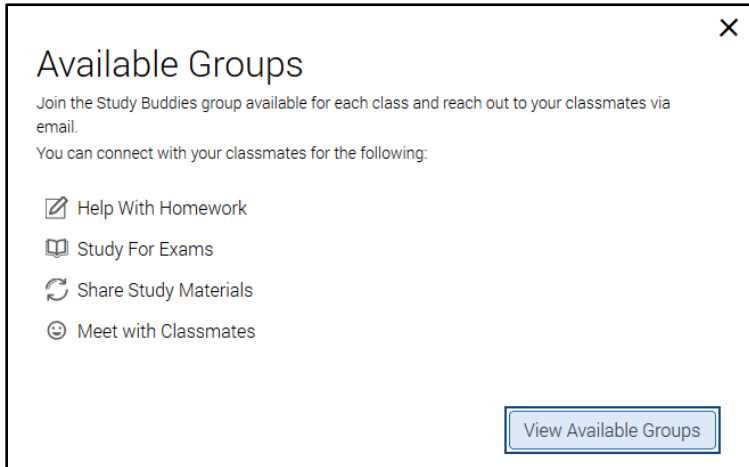
Where Can I Access Study Buddies? Study Buddies is available on Navigate app and desktop platform. Study Buddies will appear as its own icon in the '**Explore**' guide of the Navigate app, it is indicated below in the **red** circle. For the desktop, it will appear as its own icon indicated below in the **red** rectangle.

How do I use Study Buddies?

1. Study Buddies can be accessed by clicking on the Study Buddies icon on the 'Explore' guide of the Navigate app OR the Study Buddies icon in the desktop app in the desktop platform.

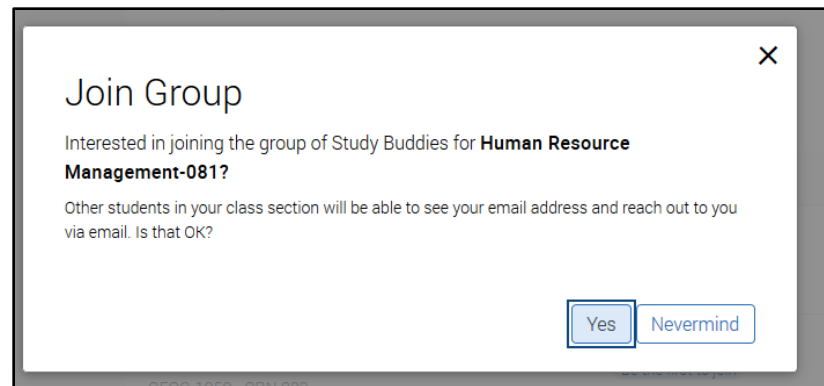


2. Once a student selects Study Buddies, they will see a list of class sections in which they are actively enrolled. Each group will show how many buddies are in the group and if the student has already joined. Students can then select the course section for which they wish to join a study group.



3. After a student selects a section for which they are interested in studying with others, the student will be prompted to confirm that they are opting into sharing their @mun.ca email address with other students in the class.

If the student selects 'Yes,' they will proceed further. If they select 'Nevermind,' the student will not be able to see or connect with others through the Study Buddy feature. Likewise, others in the class will not be able to see the student's name or @mun.ca email address.



Important to Note:

If the student has opted into sharing his or her information but is the first person in the class to do so, then 'ONLY ME' will display. The student will be told that "Once more people join, you'll be able to email them."

4. Once others have opted in, they will appear in the available list. If your institution has enabled the daily notification feature, students will get a @mun.ca email notification that new students have joined Study Buddies.



5. The student can then select the individuals they want to email. A quick search is also available to search for particular classmates who have opted into Study Buddies for that course.

6. Once the student selects the classmates, they would like to start a study group with, the student's native email app will open.

7. A student can leave the course's Study Buddies group on the app at any time. They simply select 'Leave Group'. A message prompt will appear, asking the student, "Are you sure?" If the student answers 'Yes,' their name will be removed from the Study Buddies list. If the student answers 'Nevermind,' they will be directed back to the Study Buddies list of students in that course.

Frequently Asked Questions

Does Study Buddies know when I have added/dropped/changed a course?

If a student changes their course registration at the institution, that updated information will be reflected in their app and the Study Buddies feature the following day.

When can I join study buddies?

Great news, you can join study buddies at any point during the semester, first day, last day or any time in-between.

Need Assistance

Have questions or need assistances please contact the navigate administrator by email navigateadmin@mun.ca or by phone 864-8128.

***** Please note that much of the content in this document was taken directly for EAB Navigate Help Center Document "[Smart Guidance - Study Buddies](#)", to access this document you must be first be logged into Navigate. *****

