



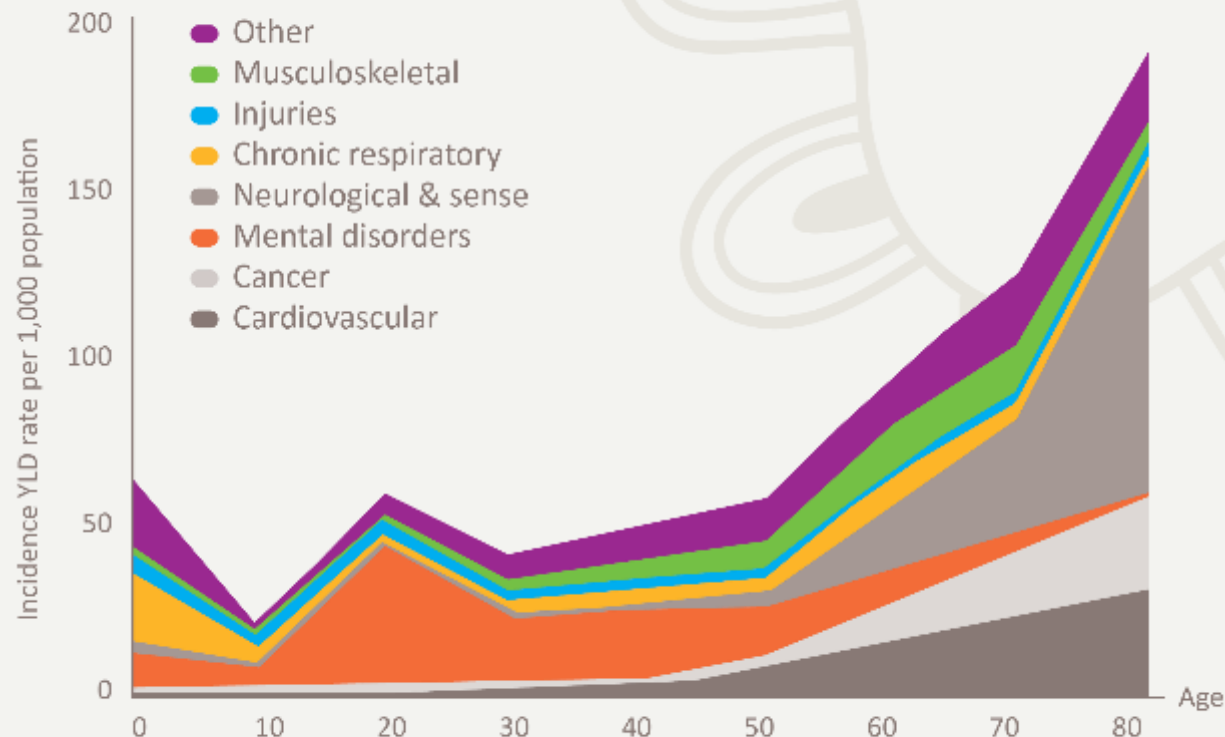
INTRODUCING FOUNDRY AND FRAYME: GROWING INTEGRATED YOUTH SERVICES IN A STEPPED APPROACH

DR. STEVE MATHIAS

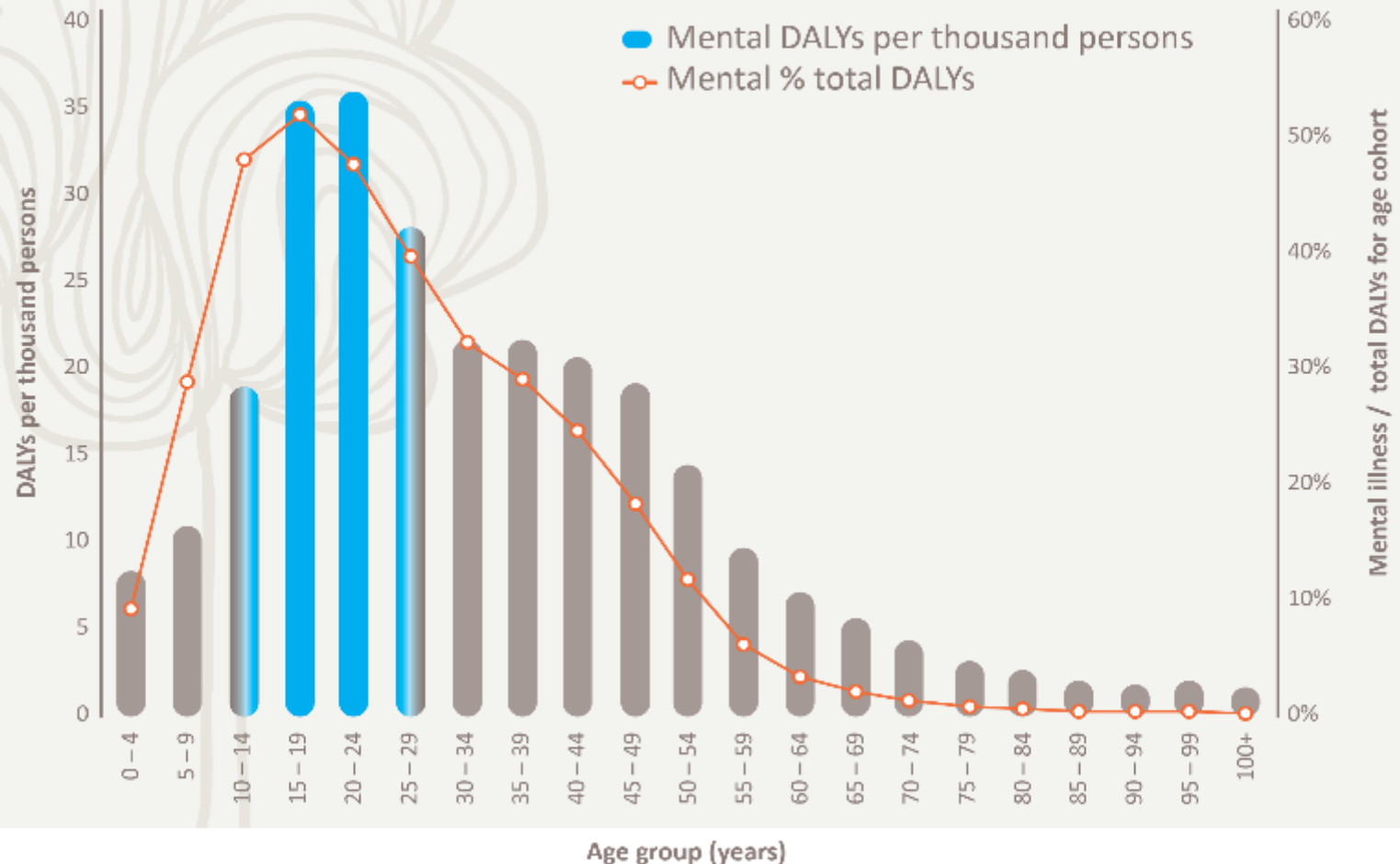
SMATHIAS@FOUNDRYBC.CA

WWW.FOUNDRYBC.CA

THIS DISEASE BURDEN GRAPH HIGHLIGHTS THAT THE GREATEST CAUSE OF MORBIDITY IN YOUNG PEOPLE AGED 10-30 ARE THE MENTAL DISORDERS...AND ITS NOT EVEN CLOSE.



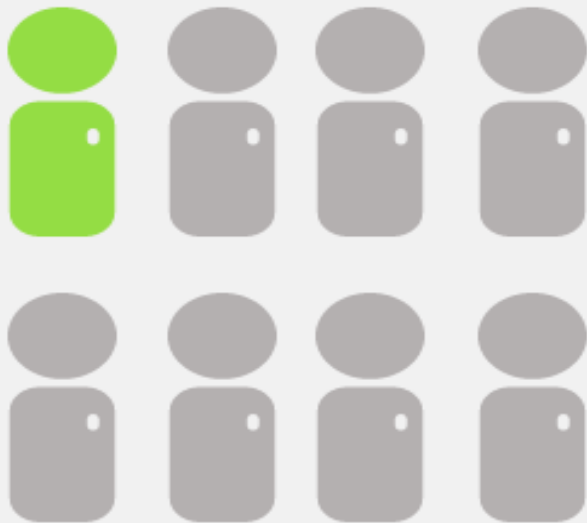
75% OF ALL LIFETIME CASES OF MENTAL HEALTH DISORDERS BEGIN BY AGE 24; 80% OF SUBSTANCE USE PROBLEMS BY AGE 20...



WE NOW KNOW MENTAL ILL HEALTH AND PROBLEMATIC SUBSTANCE USE STARTS EARLY

130,000 young people under the age of 24 attempted to access Mental Health or Substance Use services in 2012/13 (Ministry of Health data)

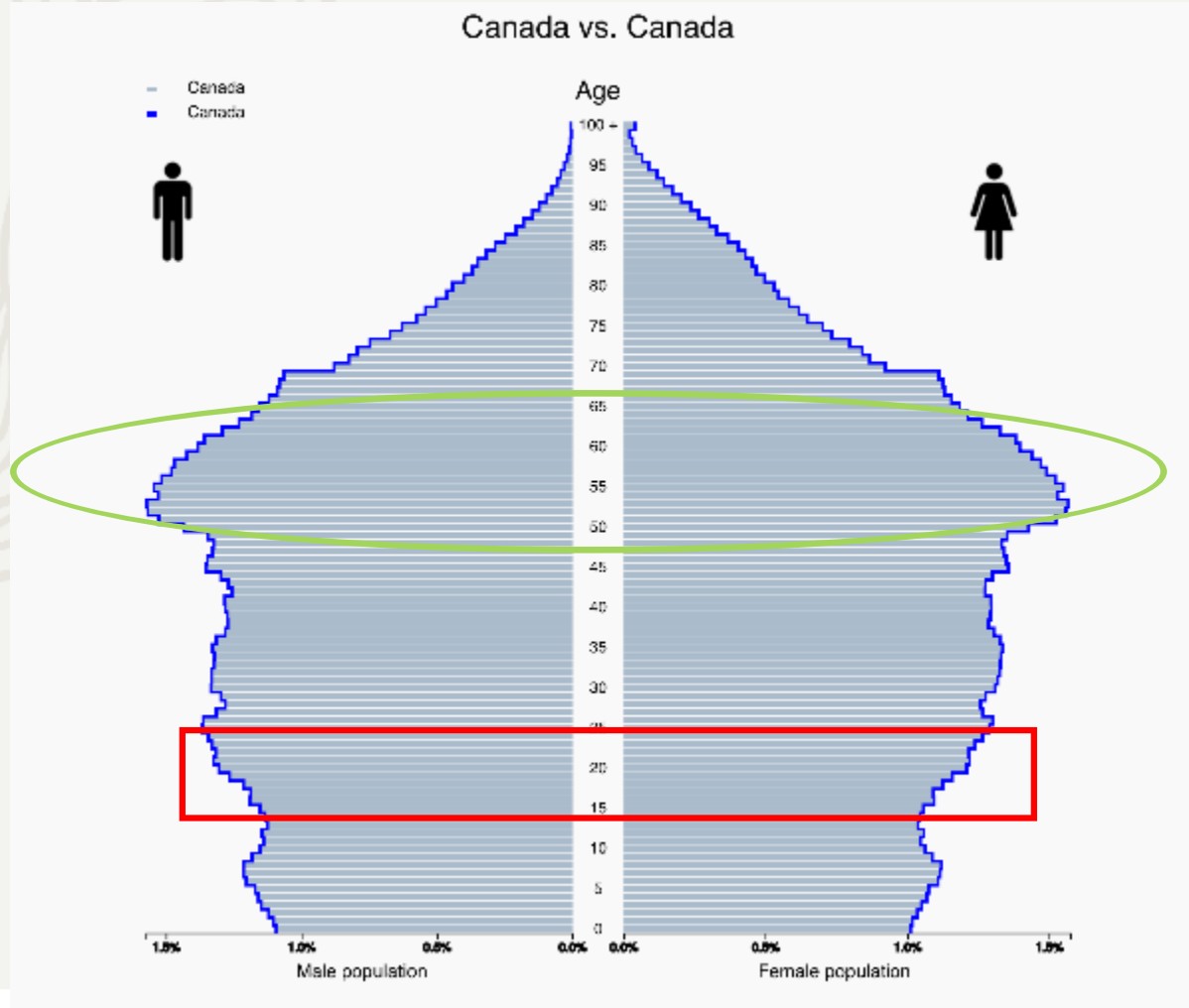
1 in 8 young British Columbians aged 0-24



↓ 50%

Youth with MHSU disorders receive MHSU services

BUT MAYBE THE GREATEST REASON TO INVEST IN “MENTAL WEALTH”...IS OUR SOCIETAL NEED FOR HEALTHY AND PRODUCTIVE YOUNG PEOPLE OVER THE NEXT 30 YEARS...



IN B.C., OUR LACK OF INVESTMENT IN YOUTH MENTAL HEALTH AND SUBSTANCE USE SERVICES HAS BEEN COSTLY AND CATASTROPHIC

- There has been an **85%** increase in ED visits over five years (2009 to 2013) for youth aged 15 to 19.
- We have seen a **50%** increase in youth inpatient admissions.
- Tragically: **1 in 4** fentanyl deaths in BC are young people aged <29 years old
 - **402** since 2012
- Our system has been described as “fragmented” and a “non-system of care” (Dr Stan Kutcher), with young people and families struggling to find access points.



VISION

Transform access
to health and social
services for youth
and families.

THE FOUNDRY MODEL: CORE SERVICES

Primary
Care

Mental
Health
Services

Youth and
Family
Peer
Support
and
Navigation

Substance
Use
Services

Social
Services

OUR BRAND TOOK A YEAR TO DEVELOP WITH HUNDREDS OF YOUTH CONSULTED...



FIND HELP, HOPE, SUPPORT, FIND YOURSELF.

FORGE NEW CONNECTIONS AND NEW ABILITIES.
FORGE YOUR PATH FOR WELLNESS.

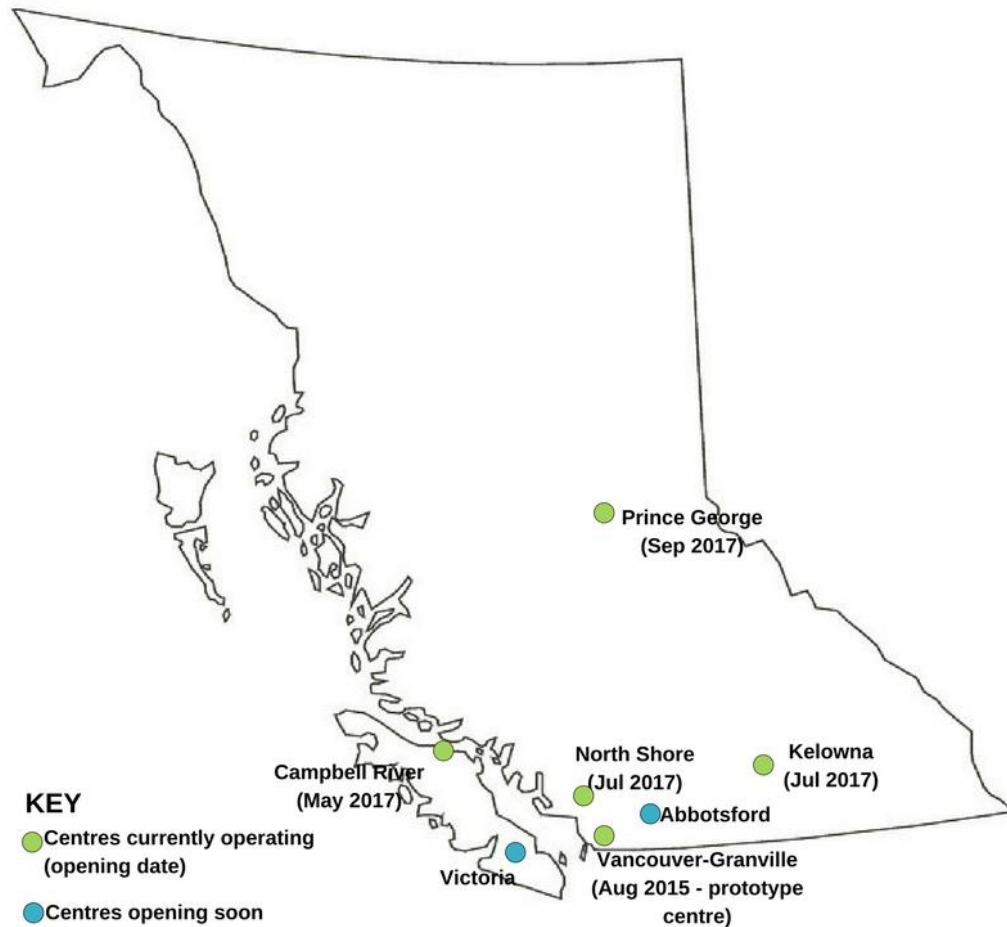
A FOUNDATION FOR HEALTH AND WELL-BEING.
A FOUNDATION FOR WHO YOU WANT TO BE.

WELCOME TO FOUNDRY.

THE APPLICATION PROCESS BROUGHT TOGETHER OVER 100 PARTNERS (AND COUNTING)



BY THE END OF 2018, WE WILL HAVE 11 FOUNDRY CENTRES ... AND HOPE FOR MORE



- Phase 1 communities:
 - Campbell River
 - Kelowna
 - North Shore
 - Prince George
 - Vancouver-Granville
 - Abbotsford
- Phase 2 communities:
 - Victoria
 - 4 more to be announced

FOUNDRY CAMPBELL RIVER

Opened April 2017
OPERATED BY JOHN HOWARD SOCIETY



FOUNDRY KELOWNA

Opened September 2017
OPERATED BY CMHA KELOWNA



COMMUNITIES HAVE OVERWHELMINGLY RESPONDED TO FOUNDRY!



Health, social service centre opens

[Christine Hinzmann](#) / Prince C

October 12, 2017 10:37 PM

One-stop youth services facility officially opens

More than 15 community partners ready to lend support

[Ben Bengtson](#) / North Shore News
SEPTEMBER 23, 2017 07:30 AM

Kelowna posted June 24, 2017 by [Sevensh Bagshaw](#)

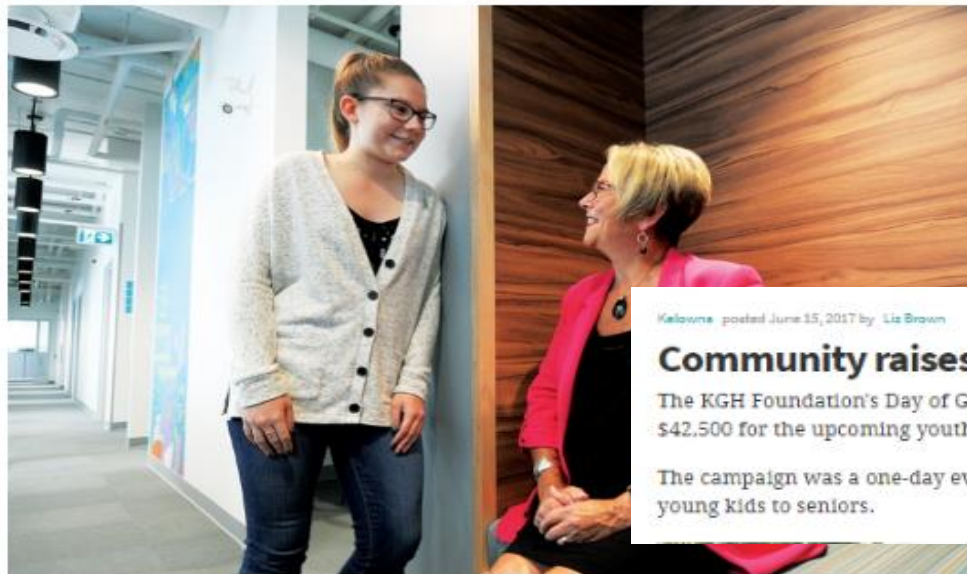
Kelowna Foundry set to welcome youth and families in early fall

By the beginning of the new school year, Kelowna will have a new establishment equipped to help youth who need it most in our community.

Foundry is a unique and innovative space that will house more than 20 mental health and social organizations working to transform the way youth and families gain access to the support they need in our community.

YOUTH MENTAL W OFFICIALLY OPEN GEORGE

KYLE DALZER, CTV 2 THURSDAY, OCT. 12TH, 2017



Kelowna posted June 15, 2017 by [Liz Brown](#)

Community raises \$42k for Foundry Kelowna

The KGH Foundation's Day of Giving campaign was a success, bringing in \$42,500 for the upcoming youth and mental health services, Foundry Kelowna.

The campaign was a one-day event on June 1st and saw participation from young kids to seniors.



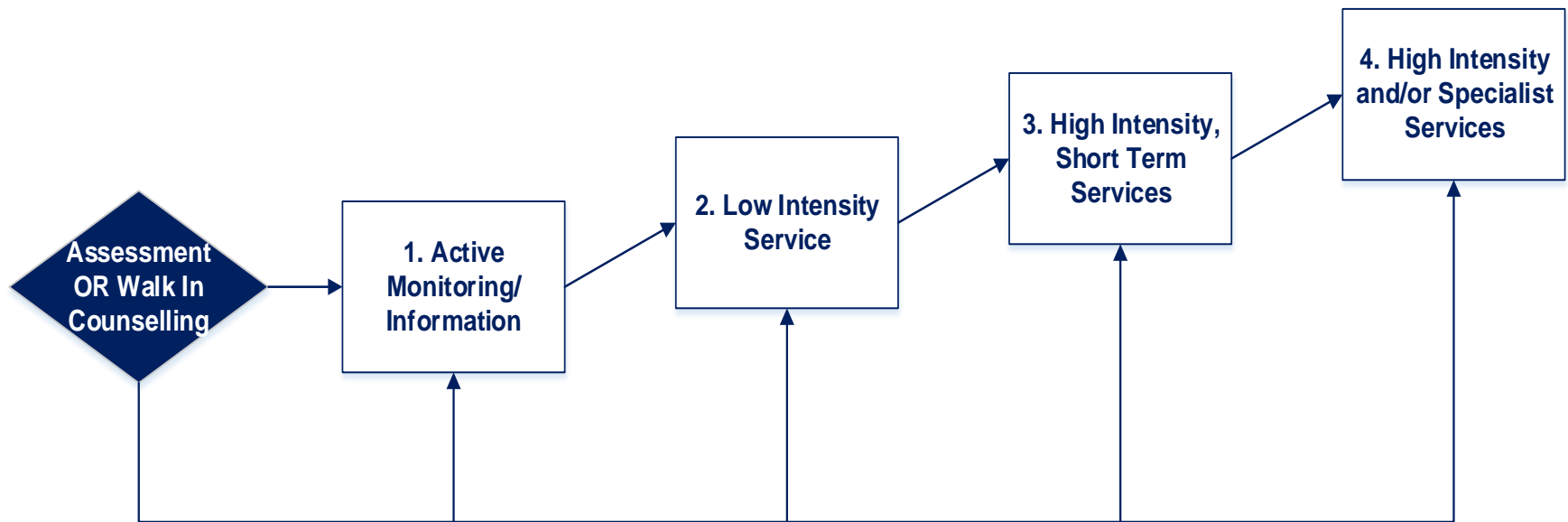
FOUNDRY CENTRAL TEAM IS THE BRIDGE BETWEEN OPERATORS, HEALTH AUTHORITIES AND GOVERNMENT



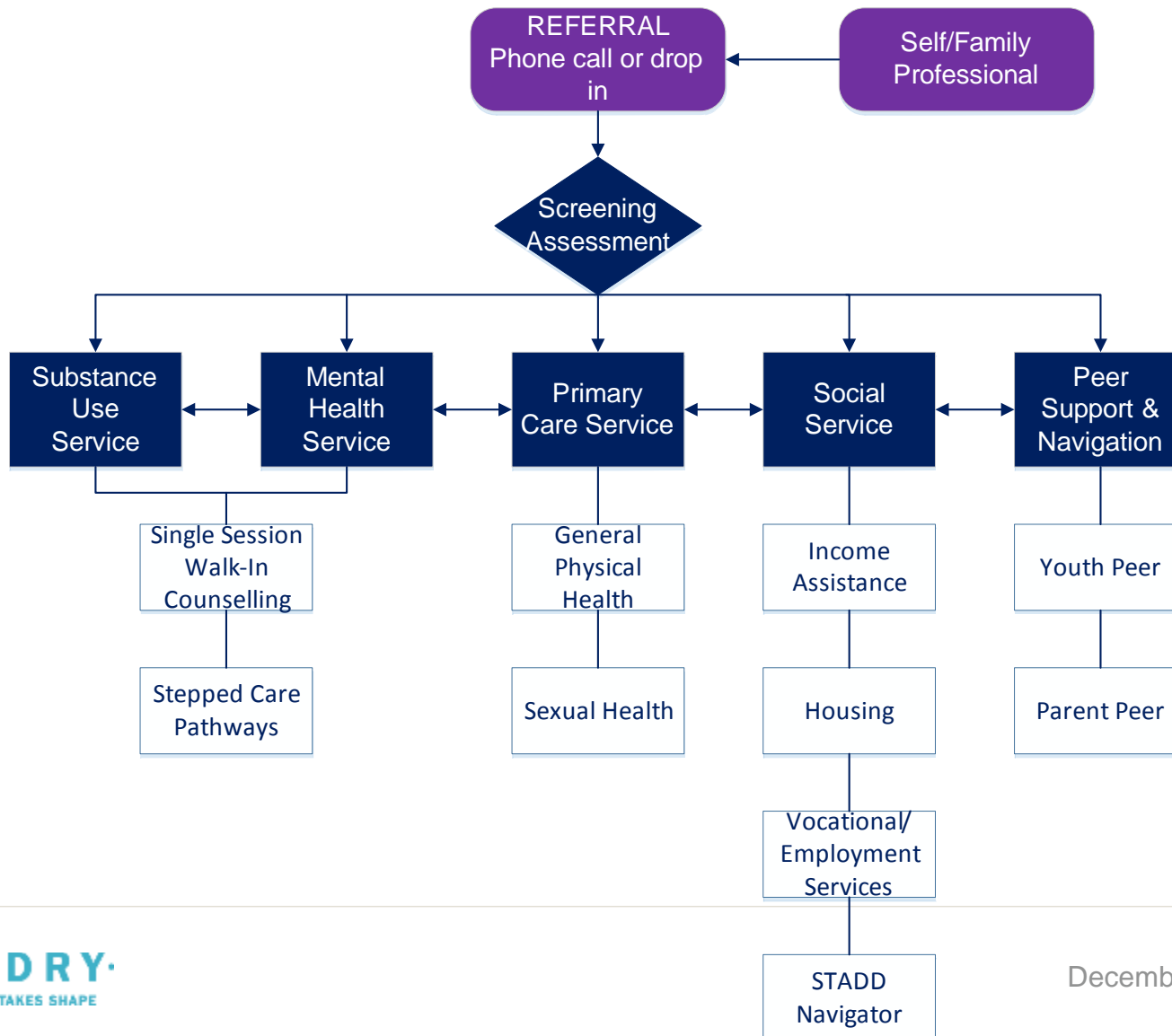
THE FOUNDRY MODEL: STEPPED CARE

Stepped Care Pathways

Mood/Anxiety/Distress
Substance Use
Early Psychosis



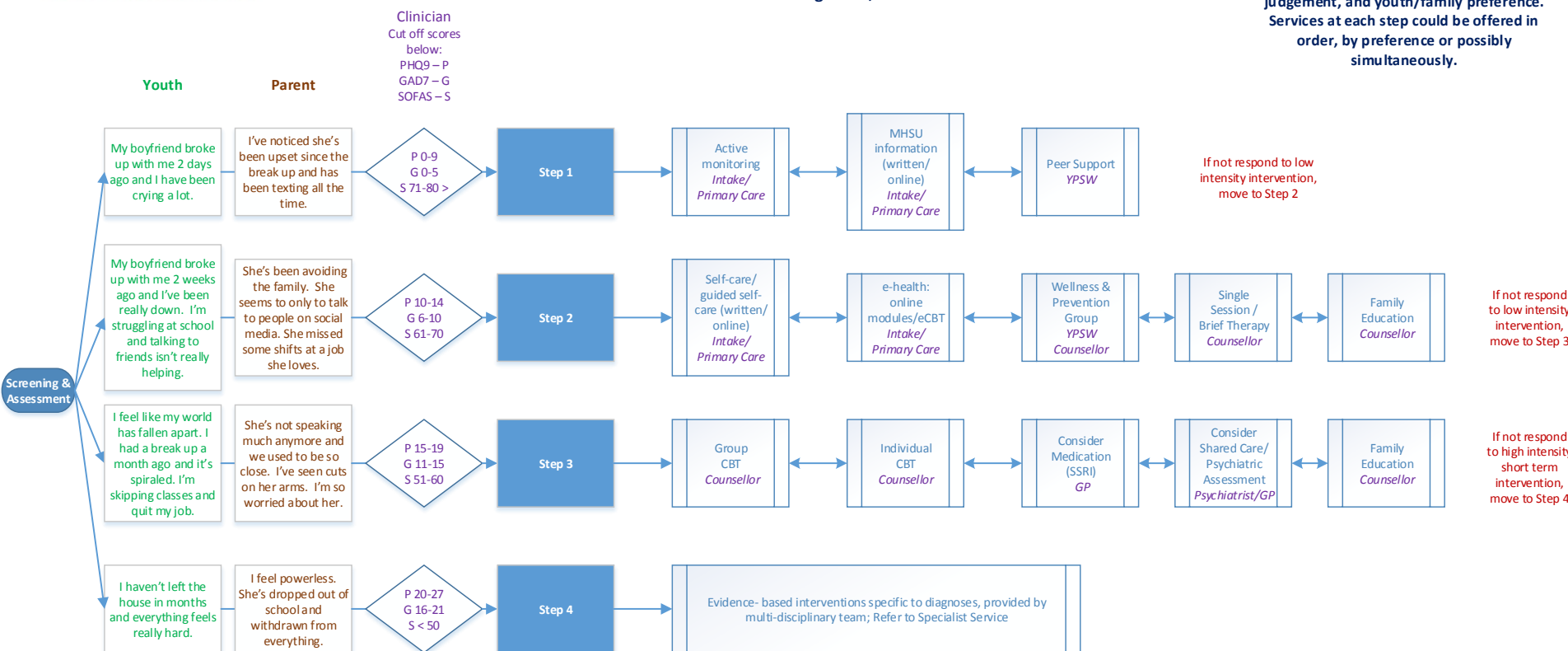
THE FOUNDRY MODEL: PATHWAYS



DRAFT MOOD/ANXIETY/DISTRESS PATHWAY

Mood/Anxiety/Distress Pathway
Draft August 31, 2017

Step placement and intervention decision is based on assessment results, clinician judgement, and youth/family preference. Services at each step could be offered in order, by preference or possibly simultaneously.

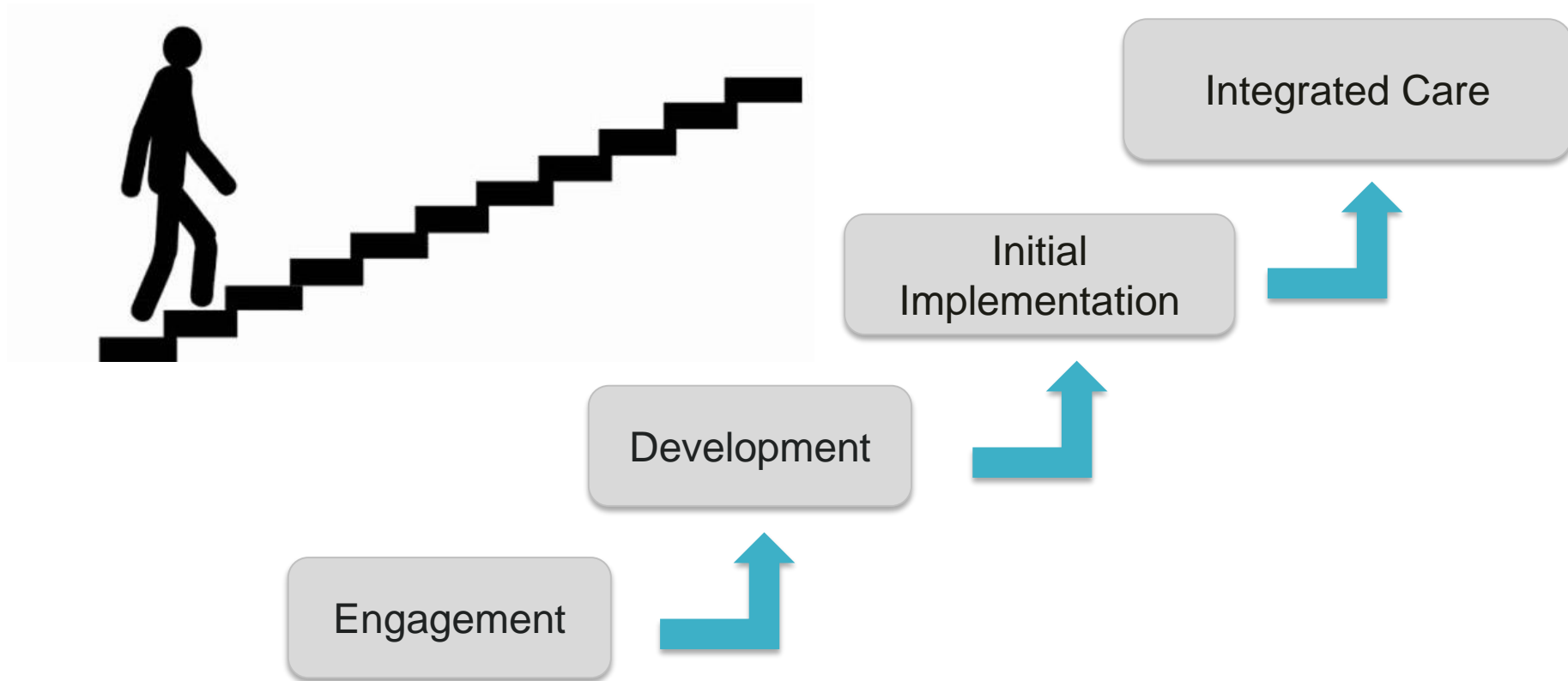


INTEGRATION OF SERVICES

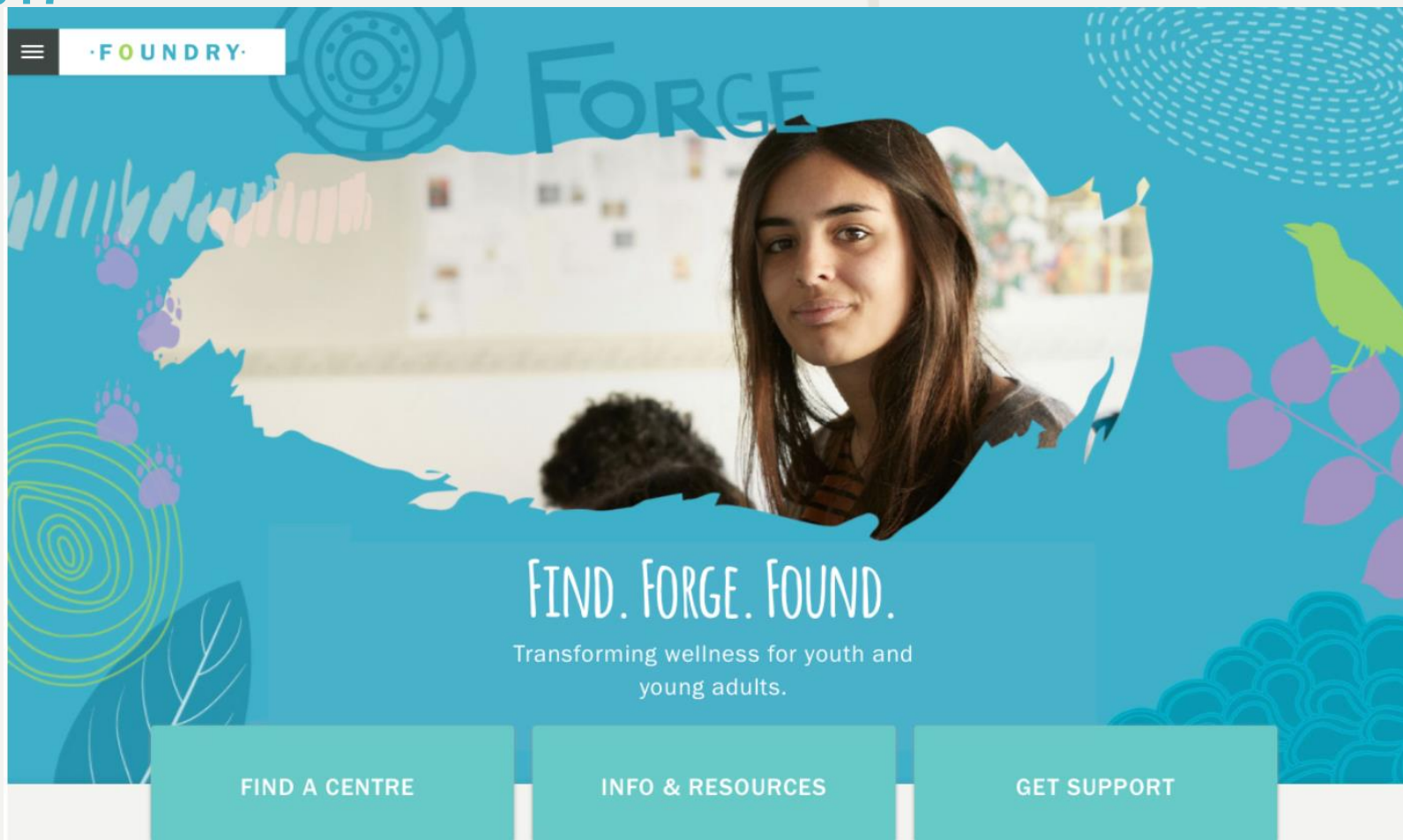


Our Challenge: Moving to fully integrated care along a continuum of mental health and substance use services delivered by multiple partners at each Foundry centre.

THE CONTINUUM OF INTEGRATION



WE HAVE PARTNERED WITH BC CHILDREN'S HOSPITAL TO BUILD FOUNDRY ONLINE LAUNCHING NOVEMBER 2017



WE ARE BUILDING KNOWLEDGE TRANSLATION NATIONALLY AND INTERNATIONALLY



FRAYME
CONNECT.
ENGAGE.
TRANSFORM.

We believe in the power of knowledge to enhance the integration of youth services.

Frayme is a global network built to gather and share the best evidence and practice-based knowledge about integrated youth services, and to put it into action in communities around the world.

[SUBSCRIBE](#)

Vision, Mission & Focus

► OUR VISION:

- Systems of care where youth get the mental health and addictions help they need when they need it

► OUR MISSION:

- To facilitate local action, national collaboration and international knowledge mobilization to improve mental health and addictions outcomes for youth

► OUR FOCUS:

- Integrated youth services (IYS)
- Stepped-care models embedded in IYS
- Strengths-based approaches
- Youth engagement
- Family engagement
- Youth-friendly technology within care

- ▶ Over 100 partners
 - 9 countries
 - 25+ universities

- ▶ Key stakeholders include
 - Youth
 - Family
 - Service providers
 - Policy-makers
 - Researchers
 - Philanthropic organizations
 - Non-government organizations
 - Not-for-profit organizations

- ▶ Best Practices in Integrated Stepped Care Model
 - Literature review
 - Knowledge Mobilization plan
- ▶ Pathways
 - Scan of Integrated Youth Services & Stepped Care pathways
- ▶ Data collection
 - Minimal core data set
 - Common platform
- ▶ Detailed scan of Integrated Youth Services services
- ▶ Gap analysis of evidence in Integrated Youth Services and Stepped Care models
 - Pending publication of partner-led scoping reviews
- ▶ Peer Support Curriculum

- ▶ Technology for Integrated Youth Services
 - Scan and best practices
- ▶ Indigenous strategy
 - Proposal developed, pending approval, to
 - Identify and engage Indigenous partners (initiated)
 - Synthesize model adaptations for Indigenous communities
- ▶ Policy mapping
- ▶ Youth engagement synthesis and policy
 - Synthesis in process
 - Policy drafted and in review

• F O U N D R Y •
WHERE WELLNESS TAKES SHAPE

THANK YOU!

