

Acknowledgements:

Camp Planning Committee

Mitch Blanchard, Qalipu First Nation

Kelly Anne Butler, Grenfell Campus, Memorial University of Newfoundland

Monique Carroll, Qalipu First Nation

Dorothy Earle, NunatuKavut

Lisa Grant, Faculty of Medicine, Memorial University of Newfoundland

Erica Hurley, Western Regional School of Nursing, Grenfell Campus

Olivia Joe, Miawpukek First Nation

Jodie Lane, Nunatsiavut

Amy Pieroway, Westernhealth

Carolyn Sturge Sparkes, Faculty of Medicine, Memorial University of Newfoundland

Howard Thistle, Qalipu First Nation

Jan Warren, Faculty of Medicine, Memorial University of Newfoundland

Contact Persons

Simon Leslie, Natuashish

Jack Penashue, Sheshatshiu Innu First Nation



HEALERS OF TOMORROW GATHERING

Kisi m'pilutesnen sapo'nuk

Kauauitshiashut nantem kamamueitunanut

Paitsijitsavut ilinniajuit

Mamihaiyiit Hivuniptinni Katimapkainiq





Funding

International Grenfell Association

Memorial University Faculty of Medicine

Government of Nunavut

In-Kind Contributions

Innu First Nation of Labrador

Miawpukek First Nation

Nunatsiavut

NunatuKavut

Qalipu First Nation

Overview of Presentation

- ▶ Background of Healers of Tomorrow Gathering
- ▶ Goals and Objectives
- ▶ Administration
- ▶ Participants
- ▶ Program
- ▶ Evaluation
- ▶ Lessons Learned

Background

- ▶ Aboriginal Health Initiative, MUN Faculty of Medicine
 - ▶ Mandate
 - ▶ Pathway Programs
 - ▶ Community Outreach

Purpose

- ▶ The **purpose** of the summer camp is to provide opportunities for students to:
 - ▶ Learn about various possible health career options;
 - ▶ Gain more knowledge about what is involved in the various health career options;
 - ▶ Learn about the knowledge and practice of healing and well-being in various First Nations/Inuit/Métis (FN/I/M) cultures.

Goals

- ▶ In keeping with this purpose, the camp will strive to meet the following **goals**:
 - ▶ Show the various health career choices that are available in both universities and colleges;
 - ▶ Offer hands-on experiences related to the various health career options;
 - ▶ Provide the opportunity to earn a certificate in first aid;
 - ▶ Increase awareness of and appreciation for the various FN/I/M cultures;
 - ▶ Increase awareness of and appreciation for the knowledge of various FN/I/M Peoples about healing and wellbeing;
 - ▶ Enable students to socialize with peers with similar interests;
 - ▶ Offer the chance to be matched with a student studying in a health career program in a college or university.

Camp Participants

- ▶ Indigenous Secondary and Tertiary Level (Year 1) Students
 - ▶ Newfoundland and Labrador
 - ▶ Innu First Nation of Labrador
 - ▶ Miawpukek First Nation
 - ▶ Nunatsiavut
 - ▶ NunatuKavut
 - ▶ Qalipu First Nation
 - ▶ Nunavut

Administration

- ▶ Planning Committee
- ▶ Camp Coordinator
 - ▶ Program Leaders

Camp Program

- ▶ Western-oriented health care professions
- ▶ Indigenous cultures, views and practices of healing and wellbeing







Sunday, August 13	Monday, August 14	Tuesday, August 15	Wednesday, August 16	Thursday, August 17	Friday, August 18	Saturday August 19
Meet and Greet In-House Activity	Laser Tag	Boat Tour	Cultural Night	Games Night	Shopping	Movie Night





Evaluation

- ▶ Pre-Camp Survey
- ▶ Post-Camp Survey
- ▶ Photo-Voice Journal

Pre-Camp Survey

- ▶ 5 key health care professions identified N=16

1. Medicine: 13
2. Nursing: 12
3. Dentistry: 9
4. Pharmacy: 8
5. Lab Technology: 5

- ▶ Interest in pursuing a health care profession

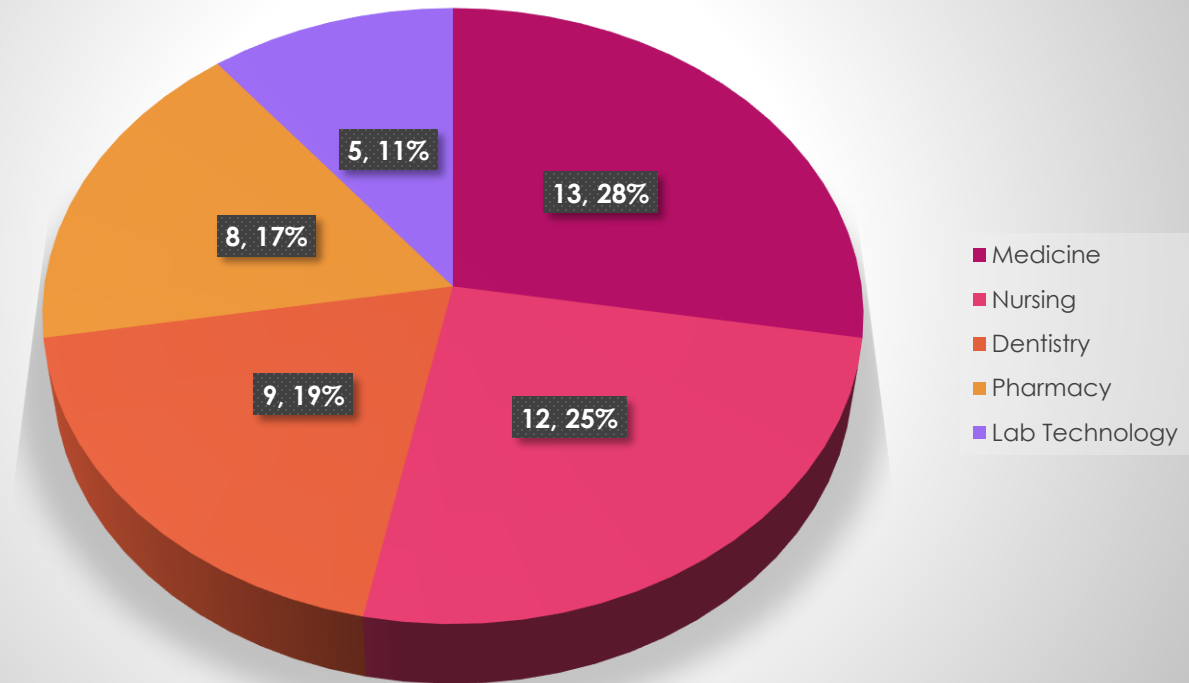
Yes: 8

Unsure: 6

No: 0

Pre Camp Survey

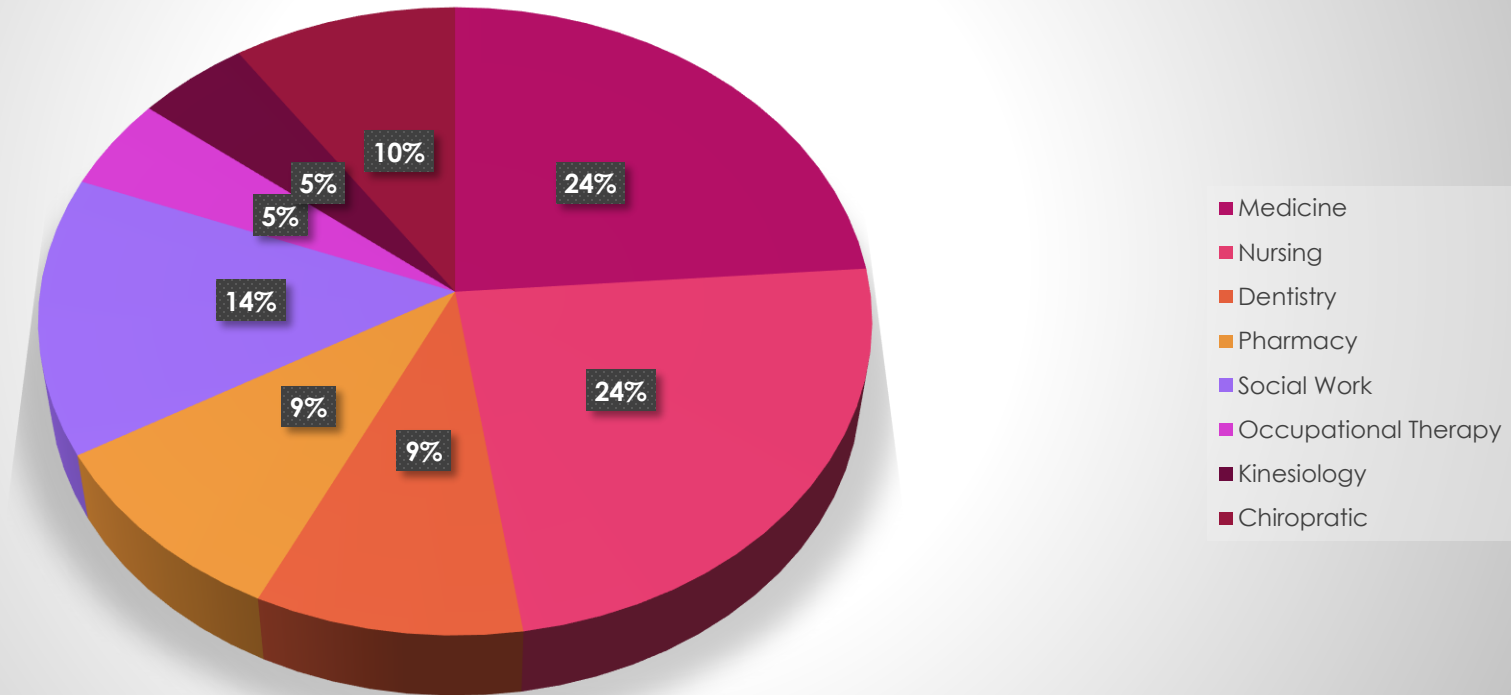
5 key health care professions identified N=16



Post-Camp Survey

- ▶ Increased interest in a health care profession: (N=17) 15 agree/strongly agreed (88%)
- ▶ Most cited professions:
 - ▶ Medicine: 5
 - ▶ Nursing: 5
 - ▶ Dentistry: 2
 - ▶ Pharmacy: 2
 - ▶ Other professions:
 - ▶ Social work: 3
 - ▶ Occupational therapy: 1
 - ▶ Kinesiology: 1
 - ▶ Chiropractic: 2

Post-Camp Survey
Increased interest in a health care profession: (N=17)
15 agree/strongly agree (88%)



- 
- ▶ Increase knowledge of Aboriginal Cultures: (N= 17) 16 responded agree/strongly agree (94%)
 - ▶ Increase knowledge of Aboriginal medicines: (N=17); 15 responded agree/strongly agree (88%)

Photovoice Journal

- ▶ Brief description.....
- ▶ Examples.....

Nursing School

This is me at the nursing school holding a baby they use to train nursing students. I chose this picture because I want to be a nurse...this was very exciting to go to the nursing school.



Light Shining Through

This picture is of the sunlight shining through the trees on Grenfell Campus. The tree represents young people learning and growing, being taught about their Aboriginal roots. The light represents the world becoming more open to people of Aboriginal roots and being who they are..



Embracing Our Culture

This photo shows many aspects of our Aboriginal culture including the medicine wheel and the symbolic animals within the culture. We chose this image because it is one of the first things we saw as we were introduced to the Aboriginal Resource Office of Grenfell.

This photo also really reflects how much we are learning about in the camp and how grateful we feel to be gaining such a deeper insight into our culture while learning about the health care field.



Mother Like Daughter

This photo is of a mother and her child dancing a Fancy Shawl dance. The mother is passing down her knowledge of her culture to her child. We took this picture to share to the public the different cultures that had gathered at the Healers of Tomorrow camp.



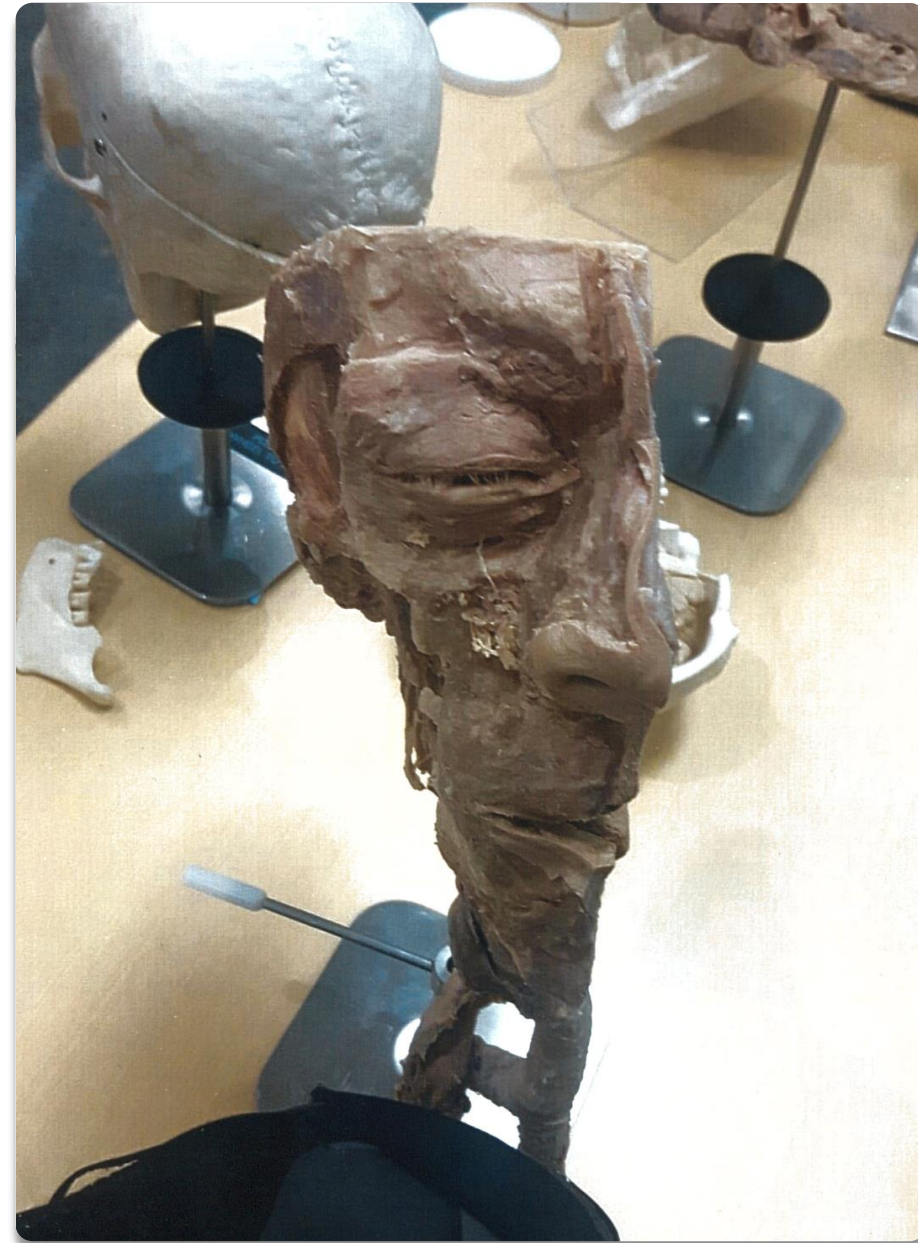
Gathering

We chose this picture because it shows our interaction and relationship that we made with the Elders. Also, it is a photo of the Elders sharing their knowledge about different cultures and traditions. It shows the importance of our Elders.



Human

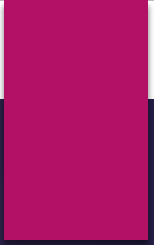
This photo describes how we're all the same on the inside. We choose this image because we thought it was really interesting and represents our core beliefs of kindness, respect, and inclusion of others.



Lessons Learned

- ▶ Age Range of Participants
- ▶ Positioning of Opening Ceremony
- ▶ Extension of Hands-On Activities
- ▶ Moving the Boundaries of the Classroom
- ▶ Administrative Support (Pre/Post Camp)





Nakummek!
Nakurmik!
Tshinaskumitin!
Wela'lin!
Thank you!

For further information----

Dr. Carolyn Sturge Sparkes,
AHI Program Coordinator/Clinical Assistant Professor
Division of Community Health and Humanities
Room M3M120, Suite M3M114
Faculty of Medicine, Memorial University of Newfoundland

E-mail: carolyn.sturge@med.mun.ca

Voice: (709) 864-4938