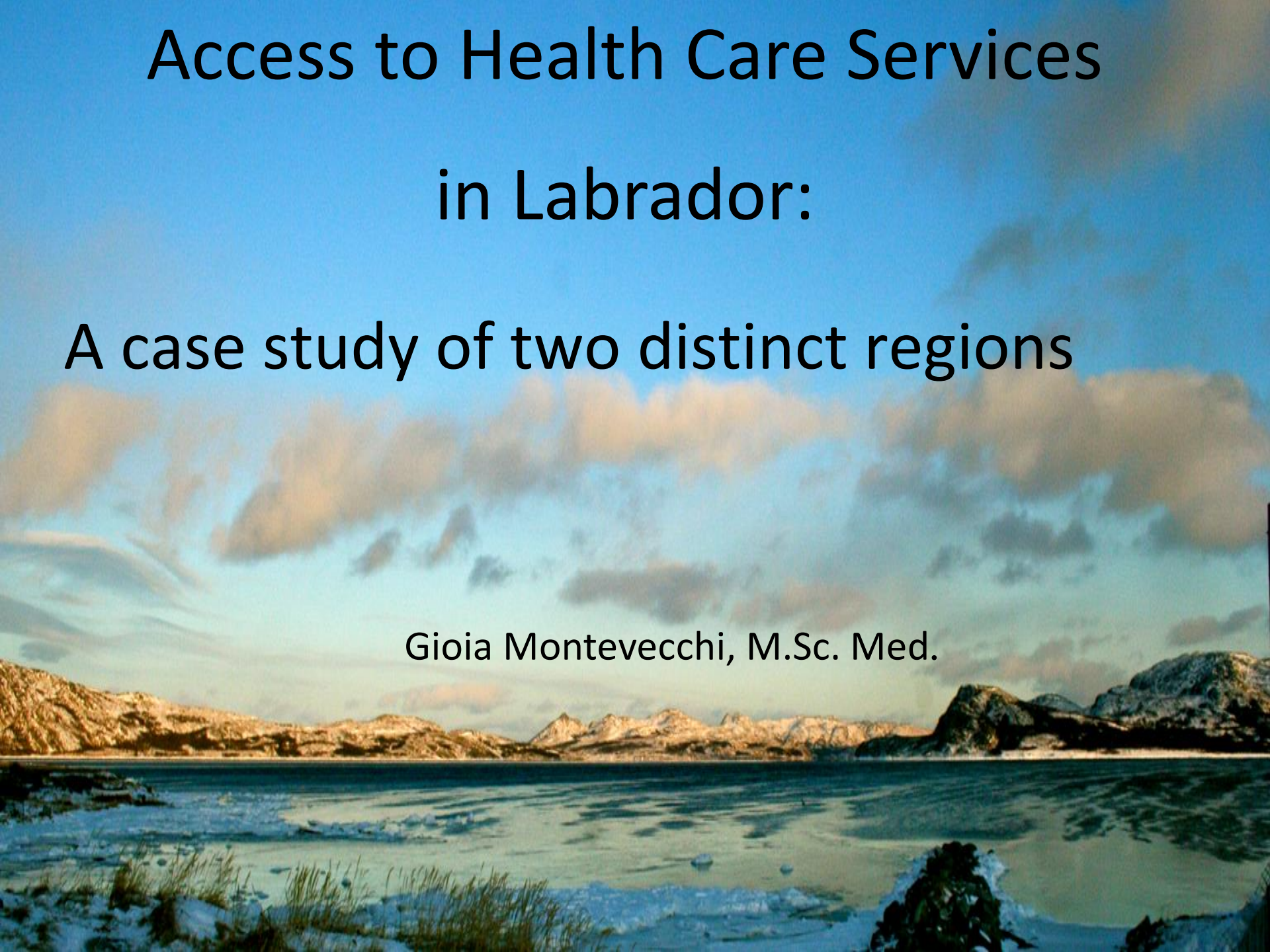
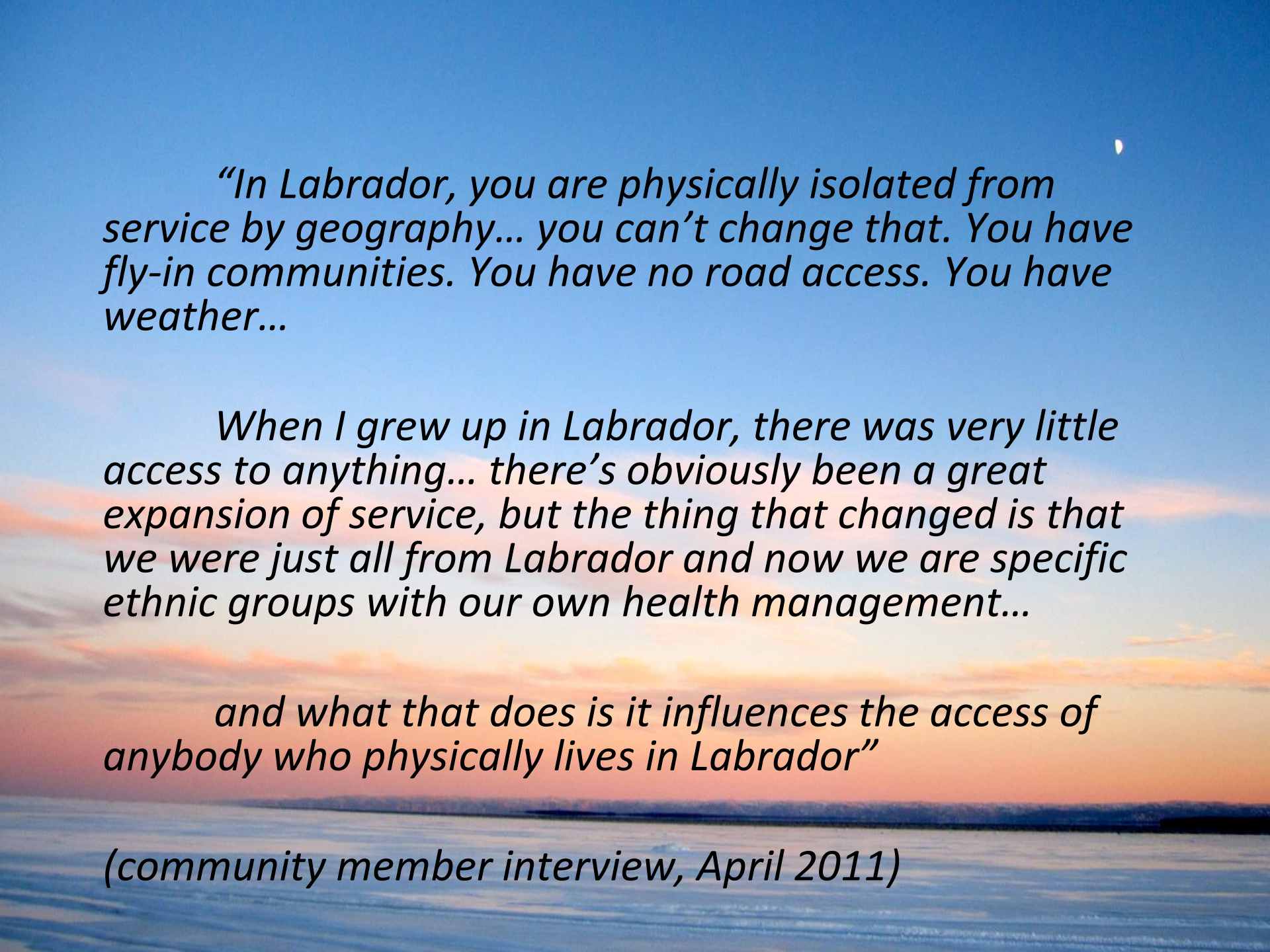


Access to Health Care Services in Labrador:

A case study of two distinct regions

Gioia Montevercchi, M.Sc. Med.





“In Labrador, you are physically isolated from service by geography... you can’t change that. You have fly-in communities. You have no road access. You have weather...

When I grew up in Labrador, there was very little access to anything... there’s obviously been a great expansion of service, but the thing that changed is that we were just all from Labrador and now we are specific ethnic groups with our own health management...

and what that does is it influences the access of anybody who physically lives in Labrador”

(community member interview, April 2011)

Research Relevance

Labradorians identified:

Disconnect between Labradorians' experiences and policies that address health care access

Documentation of Labradorians' experiences with the health care system to inform policy decisions



Research Purpose

To determine the factors that influence access to health care services in two culturally and geographically diverse regions

Research Questions

What do Labradorians identify as:

- factors that challenge access to health care services in Labrador?
- strategies to overcome them?

Research Scope

To explore a wide range of Labradorians' experiences accessing health care services in Happy Valley-Goose Bay and Nunatsiavut

Research directed at improving health care delivery, not health status



Research Frameworks

Social Determinants of Health

“The conditions in which people are born, grow, live, work, and age... shaped by the distribution of money, power and resources at global, national and local levels, which are themselves influenced by policy choices. The social determinants of health are mostly responsible for health inequities - the unfair and avoidable differences in health status seen within and between countries.”

Commission on the Social Determinants of Health, 2008, p. 1

Research Frameworks

Health as a Human Right

Goal: equitable health outcomes among populations

A human rights based research approach means asking critical questions about how societies make policy decisions and which populations fall through the cracks

Research Frameworks

Social Determinants of Health Framework

Illustrates inequities in social, political, economic, and physical contexts between and among populations

Human Rights Based Approach

Holds governments accountable for integrating human rights principles in the design, implementation, and evaluation of policies and programs

Labrador Considerations



Rural, Remote Context

Non-isolated communities of over 7000 vs. isolated communities of less than 200

Diverse Cultural Landscape

Labrador Innu, Nunatsiavut Inuit, Inuit-Metis and multi-cultural non-Aboriginal populations

Methodology

Collective Case Study Approach

In-depth investigation into a particular case through the exploration of various social dimensions

Environmental Scan

— Highlighted the geographic, political, cultural, and social context within which Labradorians access health care

Interviews

— One-to-one and focus group with health care administrators, providers, and community members

Data Analysis of Transcripts

The Voice-centered Relational Method of Analysis (Mauthner and Doucet, 1998)

Four transcript readings

- Plot
- Voice of “I”
- Relationships
- Context and social structures

Case studies

Group work



Interview Findings

4 major themes

13 identified challenges

7 identified strategies



Themes and Challenges



THEME 1: PHYSICAL ENVIRONMENT

Distance to Service

Weather

Geographic Landscape

Themes and Challenges

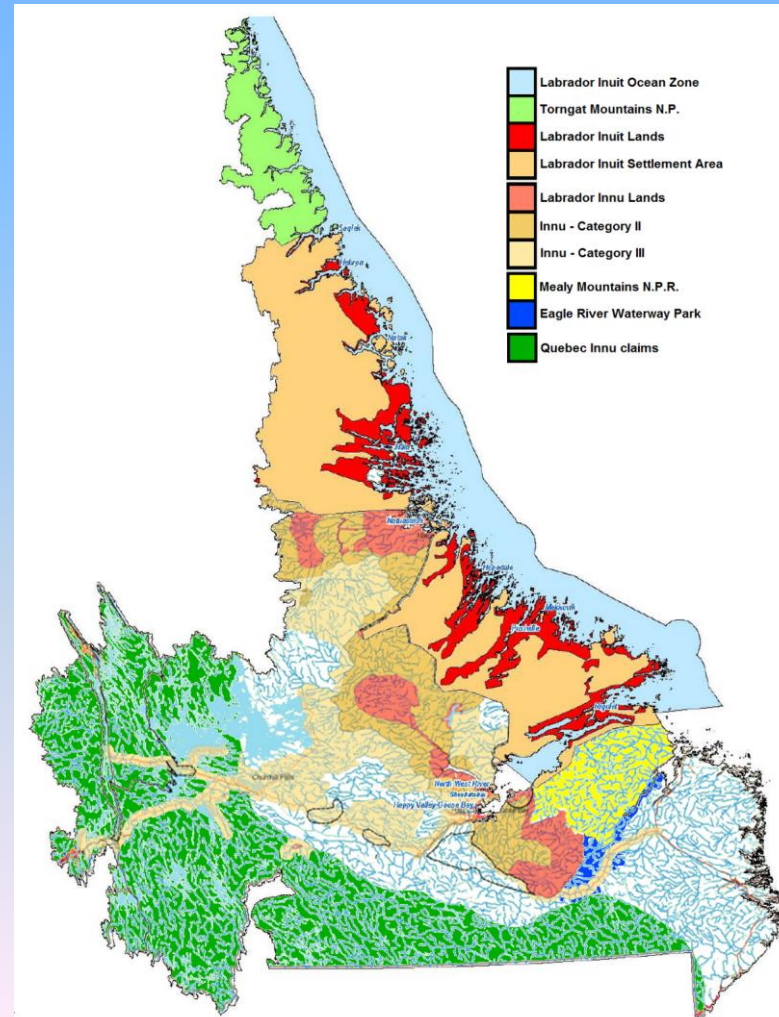
THEME 2: SOCIO-CULTURAL AND POLITICAL ENVIRONMENT

Cultural Landscape

Jurisdictional Coverage

Historical and Social Context

Cultural Safety



Themes and Challenges

THEME 3: GENDER

Maternal Care

Differential Service Usage

Seasonal Work / Hunting
and Trapping Patterns

Family Needs



An aerial photograph of a winding river flowing through a dry, rocky landscape. The sun is low on the horizon, creating a warm, orange glow that transitions into a cooler blue as it moves away from the horizon. The river's path is clearly defined by the contrast between the dark, textured rocks and the lighter, reflective water.

Themes and Challenges

THEME 4: CONTINUITY AND COMPREHENSIVENESS OF HEALTH CARE SERVICES

Health Care Provider Shortages

- Access to Specialist Care
- Wait Times
- Recruitment and Retention Challenges

Fit Between Community Needs and Services

- Inappropriate Models of Care for Isolated Communities
- Dissatisfaction with Physician Care

Identified Solutions

1. Tele-Health
2. Bringing Services to Communities
3. Recruitment and Retention Strategies
4. Medical Transportation Assistance Program
5. Patient Navigation Tools
6. Medical Evacuation
7. Scheduled Evacuation

Integrating Strategies to Overcome Challenges Accessing Health Care in Labrador

	Physical Environment	Socio -cultural and Political Environment	Gender	Continuity and Comprehensiveness of Care
Tele -Health	X	X	X	X
Local Service	X	X	X	X
Recruit/R e tain	X	X		X
MTAP	X	X		X
Medevac	X			X
Navigation		X		
Schedevac	X			



Recommendations

21 recommendations associated with major themes
and associated strategies

Aimed at regional and provincial authorities to inform
policy development and programming surrounding
access to health care services in Labrador

The background of the slide is a photograph of a sunset. The sun is a bright, glowing orb on the right side of the horizon, partially obscured by a dark, silhouetted hill. The sky is filled with soft, orange and yellow clouds. The water in the foreground is calm, reflecting the colors of the sunset and the dark shapes of the hills.

The Paramount Solution

Importance of accessing culturally safe, comprehensive health care services that acknowledge physical environment and gender considerations

Tele-Health: efficient, cost-effective solution to improving access to health care services in Labrador



Conclusion

Access to health care services in Labrador can be improved if separate realities are appreciated and strategies are adapted to meet specific needs of communities

Acknowledgements

Dr. Victor Maddalena

Dr. Diana Gustafson

Dr. Kris Aubrey

Funding Bodies:

Atlantic Aboriginal Health Research Program

Atlantic Regional Training Committee

Rural Secretariat

MITACS

Research Support:

Labrador Institute, Memorial University

Labrador Aboriginal Health Research Committee



Thank you.