



# JOURNEY OF COLLABORATION



# Land Acknowledgement

We respectfully acknowledge the territory in which we gather as the ancestral homelands of the Beothuk, and the island of Newfoundland as the ancestral homelands of the Mi'kmaq and Beothuk. We would also like to recognize the Inuit of Nunatsiavut and NunatuKavut and the Innu of Nitassinan, and their ancestors, as the original people of Labrador. We strive for respectful relationships with all the peoples of this province as we search for collective healing and true reconciliation and honour this beautiful land together.

# Journey of Collaboration

*Partnering with Indigenous people to develop an engagement strategy and implementation plan to co-design health and wellness programs and services within Western Newfoundland and Labrador*

# PARTNER ORGANIZATIONS

# OUR REGION

**\$396 million**

Budget

**77,720**

Population

**3100**

Employees

**1,500**

Volunteers

**158**

Physicians

**3**

Foundations

## Health Care Facilities:

- 2** Acute Care Hospitals (448 inpatient beds)
- 4** Rural Health Centres
- 2** Long Term Care Homes (464 beds)
- 4** Protective Community Residences (40 beds)
- 26** Medical Centres
- 26** Community Offices

## Provincial Programs:

Humberwood (inpatient addiction)

Western Regional School of Nursing





Qalipu  
FIRST NATION

- Mi'kmaq First Nation
- Established in 2011 as an Indigenous Band under the Indian Act
- Large membership spread across 67 traditional Newfoundland Mi'kmaq communities and abroad
- One of the largest First Nation groups in Canada



- Western Regional School of Nursing (WRSON)
- Operated by Western Health in partnership with Grenfell Campus
- One of three locations of the Bachelor Nursing collaborative program in NL



**GRENFELL**  
CAMPUS

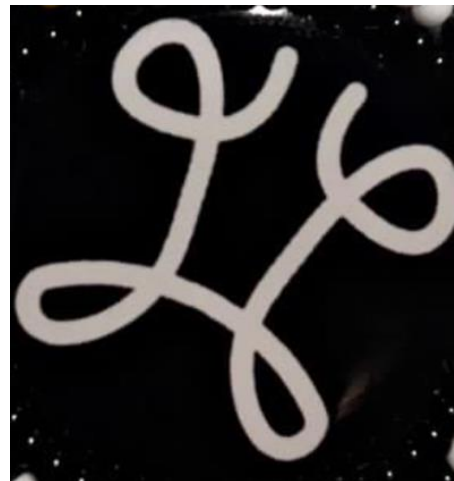


- Memorial University campus located in Corner Brook
- Aboriginal Student Centre
- Approx. 280 self-identified Aboriginal students on campus



# Mi'kmaq Community

- Community member
- Development of a culturally relevant engagement strategy
- Sustained partnership
- Cultural guidance and expertise



# Project Objectives

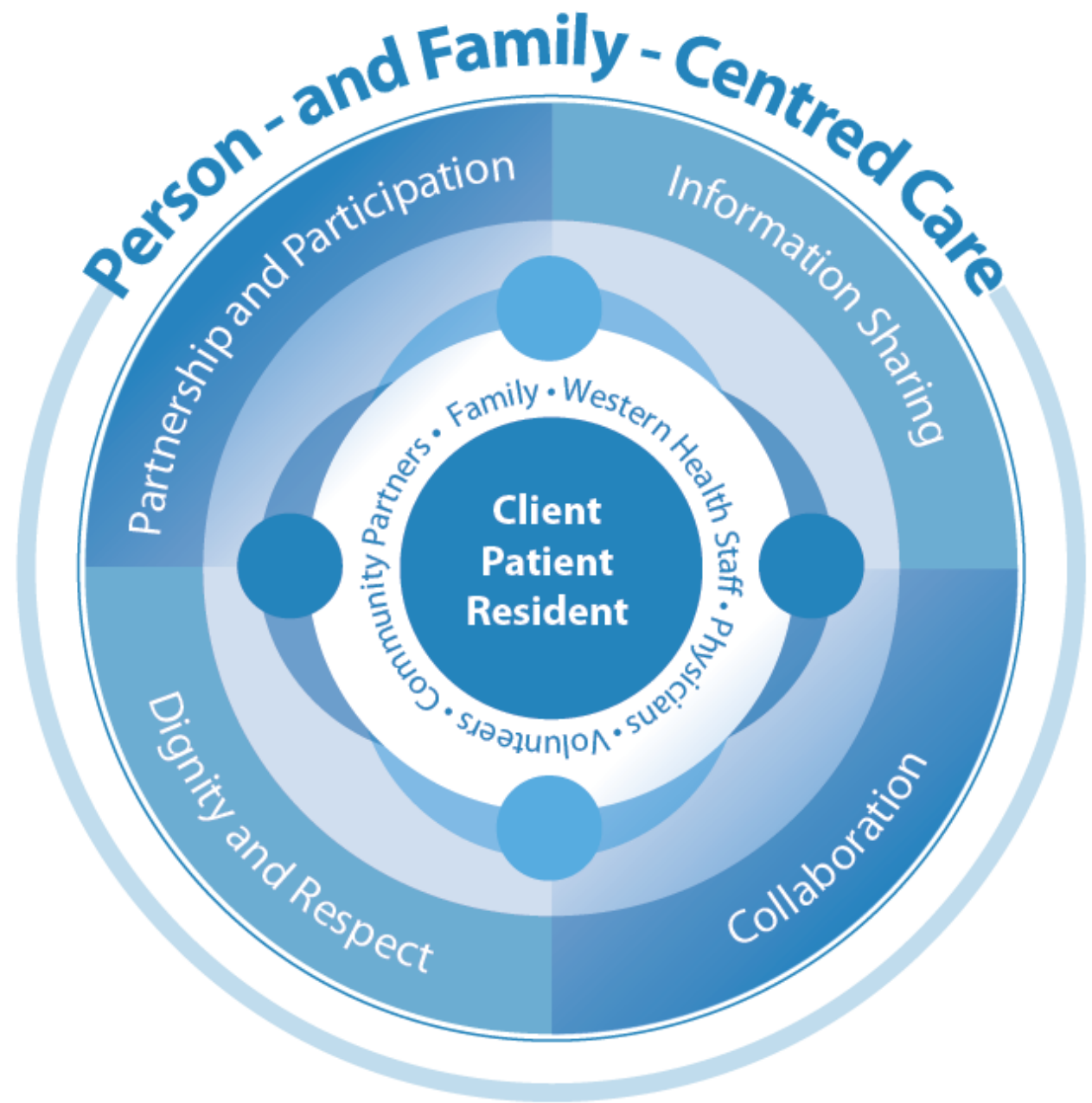
1. To integrate Indigenous voices in the development of health and wellness strategies to help address the calls to action as outlined in the Truth and Reconciliation Commission of Canada: Calls to Action

- Closing the gaps in health outcomes between Aboriginal and non-Aboriginal communities
- Recognizing the value of Aboriginal healing practices and use them in the treatment of Aboriginal patients in collaboration with healers and Elders
- Providing cultural competency training for all health care professionals

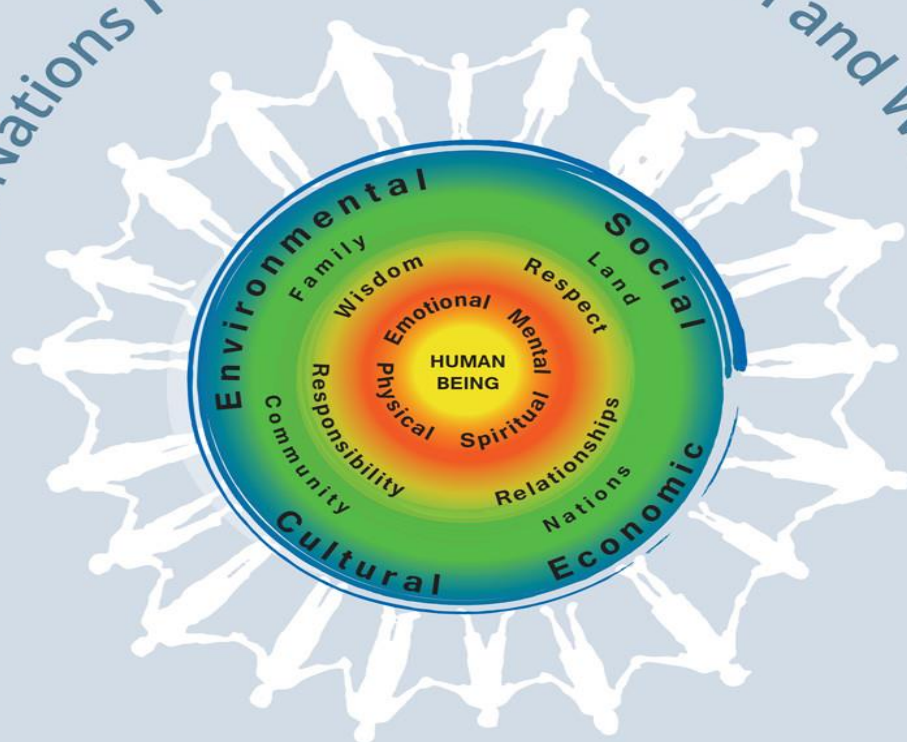
2. To develop an engagement strategy for partnering with the Mi'kmaq people of Western NL to improve access and health and wellness outcomes through co-designing health and wellness services and programs by building upon Western Health's Person and Family Centered Care Strategy

3. To develop an implementation plan for establishing sustainable means of partnering with the Mi'kmaq people of Western NL in the co-design of health and wellness services and programs.

4. To share the developed engagement strategy, implementation plan, and lesson learned from this journey of collaboration.



# First Nations Perspective on Health and Wellness



First Nations Health Authority  
Health through wellness

[www.fnha.ca](http://www.fnha.ca)

# How will we do this?

- Project steering committee
- Recruit and hire project lead
- Facilitate community engagement sessions
- Develop engagement strategy
- Develop implementation plan
- Share lessons learned

# Sustainability

- Mi'kmaq community partnerships
- Accreditation Canada
- Western Health PFCC strategy
- Multiple partnerships



# Where are we now?

- Project steering committee
- Recruitment of project lead
- Community engagement planning

# Questions?