



35 Barnes Road
St. John's, NL
A1C 3X1

Phone: (709) 753-8760
Email: information@thelantern.ca
Website: www.thelantern.ca

The Lantern Accessibility Plan

(updated 2017)

Front Entrance:

35 Barnes Road

Accessible Entrance:

Via north side of building, facing Mullock Street, access through Lantern parking lot or gate facing Mullock Street (with advance notice)

External double doors, 6 ft. wide

Recently paved, large enough for accessibility vehicles (including GoBus Accessible Transit)

No Ramp necessary

No automated button, but door bell that alerts office staff



Entrance on Barnes Road



Entrance facing Mullock Street

Parking:

Limited parking available on The Lantern lot, no designated blue space. Non-permit, on street parking available on both sides of Barnes Road and upper side of Mullock Street (when winter regulations not in

effect). Overflow lot parking available at the Roman Catholic Basilica (200 Military Road), accessible via paved laneway—as marked by a large green sign on corner of Presentation Convent.

Interior Accessibility:

Interior accessibility applies to the main floor of the building only

No stairs, steps, or ramps

No gaps in flooring

Wide rooms and hallways

- Conference Room: 81 ft x 51 ft
- Cafeteria Space: 46 ft x 22 ft
- Hallway: 7.5 ft (width)

Washrooms:

Designated, single stall, fully accessible, gender neutral washroom located in main hallway

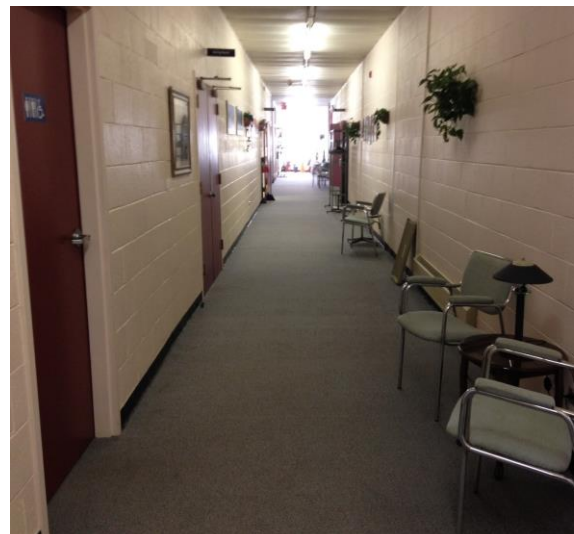
- Door width: 3ft
- Washroom: 8.5 ft x 7 ft
- Grab bars near toilet
- In case of emergency, flashing light alarm for hearing impaired

Additional fully accessible stalls in both male and female main-floor washrooms

- Grab bars near toilet
- In case of emergency, flashing light alarm for hearing impaired



Accessible Washroom



Main Hallway

Additional Information:

Microphones available in the conference room

Hearing amplification devices available on site

Quiet Room available for personal reflection

Breastfeeding friendly

Certified service animals welcome

Water, tea, coffee available on site



For more information or to discuss specific accessibility inquiries, please contact The Lantern.