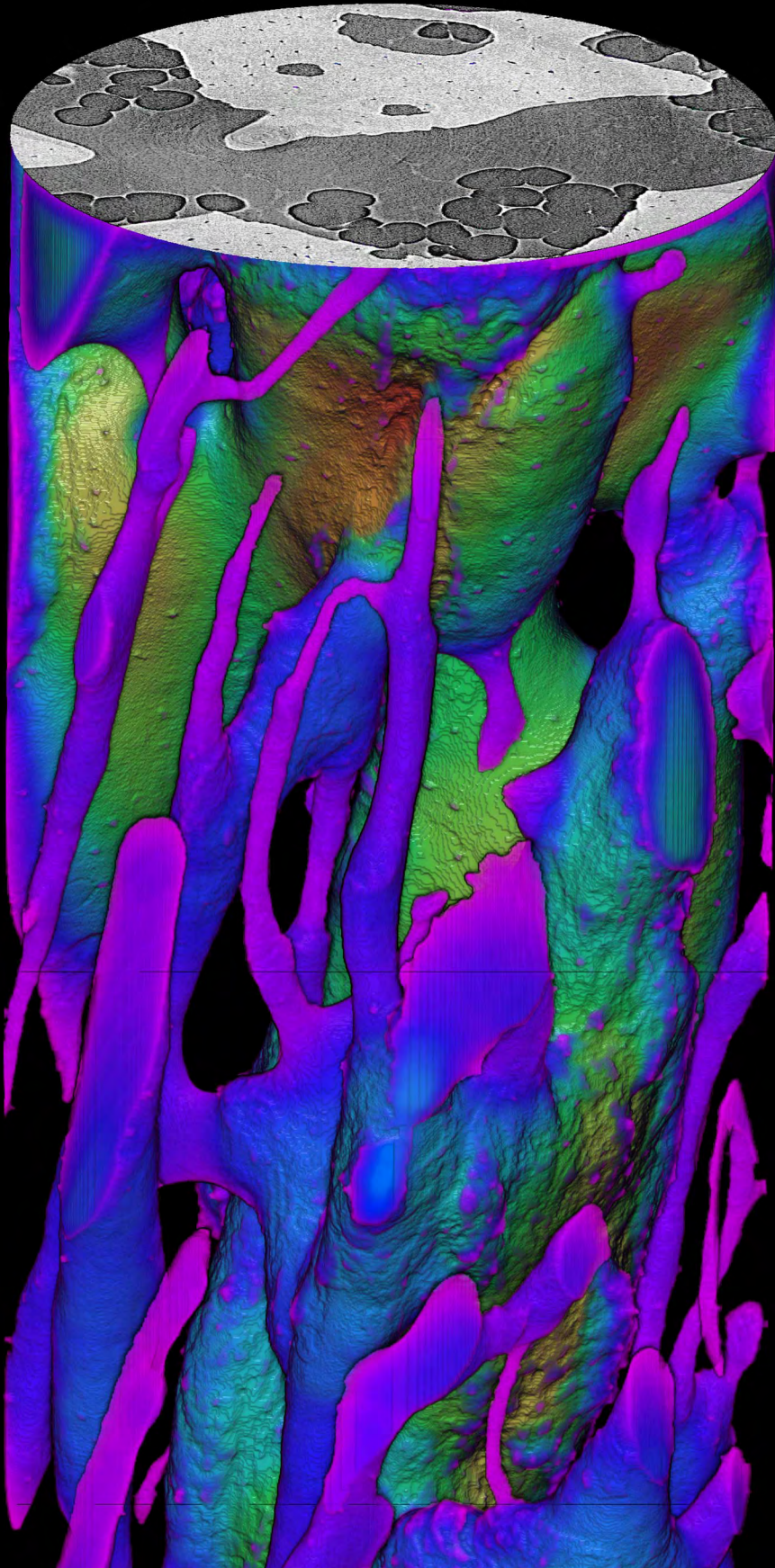


2 0 2 2

ANNUAL REPORT

F A C U L T Y O F M E D I C I N E



Faculty of Medicine

IN THIS ISSUE

DEAN'S MESSAGE • ADMINISTRATIVE OVERVIEW • DESTINATION EXCELLENCE •
DONOR RECOGNITION AND ALUMNI PRIDE • AWARDS AND ACCOMPLISHMENTS •
SOCIAL ACCOUNTABILITY • RESEARCH AND FUNDING • EDUCATION •
ADVANCING HEALTH CARE

Cover Image by Dr. Janna M. Andronowski

Osteoporosis afflicts millions of people across Canada, with treatment and research costing billions—and as our population ages, this condition is poised to expand its impact further. New high-resolution approaches for the visualization and assessment of cortical bone porosity are emerging for both preclinical and clinical assessment of bone quality.

Dr. Janna M. Andronowski and her team at Memorial University are exploring changes in the vascular pore and cellular-level organization of human bone with age. This high-resolution 3D render of bone was generated using synchrotron radiation micro-computed tomography at the Canadian Light Source, Canada's only synchrotron light source facility. This image visualizes the thickness of bone's vascular pores from small (pink/blue; 1.44 μm) to large (yellow/green; 464 μm), and its cellular density (gold spots). Age-associated increases in porosity and decreases in cellular density may lead to increased bone fragility and decreased bone quality.



DEAN'S MESSAGE

Our 2021/2022 annual report highlights many achievements and advancements in medical education, research and social accountability from April 1, 2021 to March 31, 2022.

Day-to-day activities are returning to pre-pandemic state at Memorial, but challenges still remain. I am impressed by our faculty, staff and learners, who show strength in adversity and a continued dedication to advancing medical education and research.

This report highlights the Faculty of Medicine's ongoing research excellence. This includes the continuation of federal funding for COVID-19 vaccine response research, a collaboration between the Faculty of Medicine and regional health authority Eastern Health. We also highlight the Atlantic Cancer Consortium (ACC), a group of doctors and scientists in Nova Scotia, New Brunswick and Newfoundland and Labrador, launched in 2021, that received \$3.6 million in new provincial and national funding for cancer research.

Through our strategic plan, *Destination Excellence*, this past year saw the development of two new project teams focusing on internationalization and equity, diversity and inclusion. The Culture of Excellence team continues to focus on the unit assessment's recommendations, and our Wellness and Well-being Advisory Committee explores the implementation of recommendations from the inaugural wellness survey.

Significant partnership announcements were also made during this past year. Those include the initial steps to develop a joint Doctor of Medicine degree with the University of Prince Edward Island (UPEI). This first-in-Canada collaboration will leverage the strengths of both UPEI and Memorial's Faculty of Medicine and increase training opportunities for future family physicians and generalist specialists.

Rural medical education continues to be an important area of focus. In 2021, Memorial received the Society of Rural Physicians of Canada's Keith Award for the eighth time since the award was established in 2000. This distinction is awarded annually to the Canadian Faculty of Medicine that has trained the greatest number of family physicians still practicing in rural areas 10 years after graduation.

On behalf of our faculty, staff and learners, I extend my thanks to all those who support Memorial's Faculty of Medicine, in so many different ways. Thank you for being a part of this journey as we continue to advance health through medical education, research and social accountability.

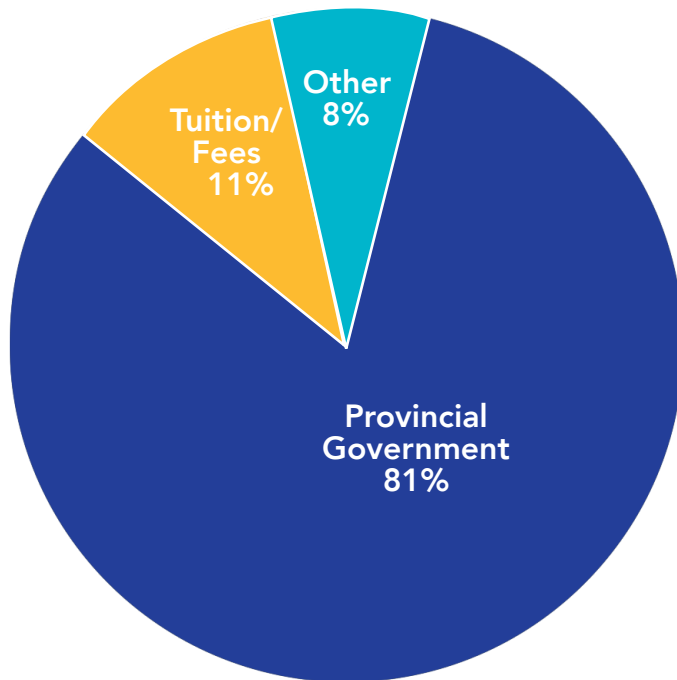
Margaret Steele

Dr. Margaret Steele
Dean, Faculty of Medicine
Professor, Discipline of Psychiatry
Memorial University of Newfoundland

ADMINISTRATIVE OVERVIEW

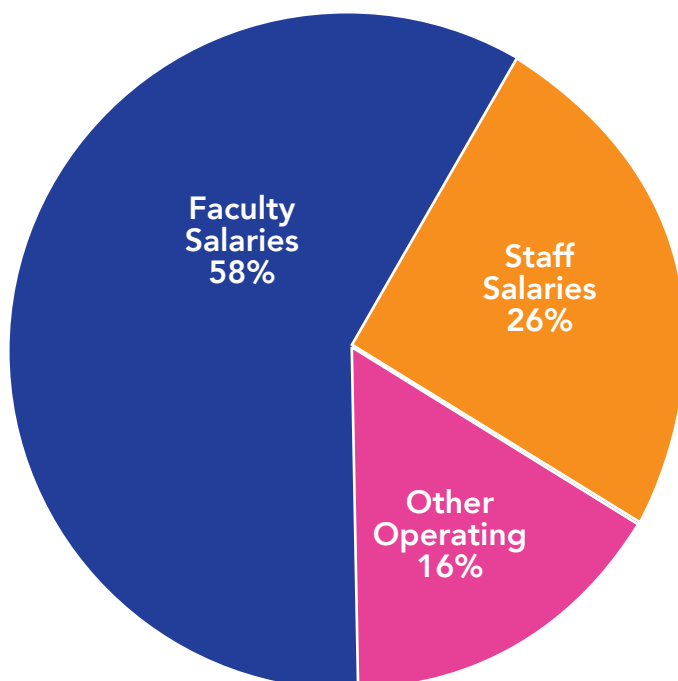
In 2021/22, the Faculty of Medicine earned \$71 million in operating revenues, including a \$2.5-million stabilization payment from the Government of Newfoundland and Labrador's Department of Health and Community Services to eliminate the annual operating deficit. As of March 31, 2022, the Faculty had an accumulated surplus of \$1.1 million: \$0.8 related to core operations and the remainder related to professional development funds and ancillary operations.

A BREAKDOWN OF CORE OPERATIONS:



Other revenue is comprised of:

- External recoveries
- Contract revenue
- Indirect cost of research funding
- Other learner-related revenue
- Other miscellaneous



Other operating expenses is comprised of:

- Externally contracted services/MOUs
- Utilities
- Library collection
- Operating leases
- Materials and supplies
- Professional fees
- Internal transfers
- Building and equipment repair
- Telecommunications
- Other miscellaneous

STAFFING, FACULTY AND ADMINISTRATIVE SERVICES

The Faculty of Medicine is required to meet accreditation standards, which may include separate administrative structures and services. These standards apply to all 17 Canadian medical schools.

Office	GFT Faculty	MUNFA	Clinical Educators	Part-time Stipendiary Clinical Faculty	Non-Stipendiary Faculty	Non-Academic Staff
Admissions						4
Building Operations						1
Clinical Learning and Simulation Centre						12
Dean's Office						13
Discipline of Anesthesia	13	0	0	8	60	2
Discipline of Emergency Medicine	8	1		14	66	3
Discipline of Family Medicine	24	2	6	22	403	25
Discipline of Laboratory Medicine	12	0	0	2	44	2
Discipline of Medicine	48	1	1	27	169	7
Discipline of Obstetrics/Gynecology	15	0	2	6	41	3
Discipline of Oncology	7	1	0	17	13	2
Discipline of Pediatrics	24	1	0	23	70	4
Discipline of Psychiatry	16	2	2	24	60	3
Discipline of Radiology	6	1	0	33	26	4
Discipline of Surgery	14	0	1	27	119	4
Division of BioMedical Sciences		33		0	17	7
Division of Community Health and Humanities		30		3	30	12
Finance		0				11
Health Sciences Centre Library		7				12
Human Resources						4
Health Research Ethics Authority						3
HSIMS						34
Medical Laboratories						12
Medicine Development Office						3
New Brunswick Office				4		
NL Centre for Applied Health Research						6
Professional and Educational Development						13
Postgraduate Medical Education						6
Research and Graduate Studies						7
Distributed Medical Education				3		12
Learner Well-Being and Success						6
Undergraduate Medical Education				1		8
Total	187	79	12	214	1118	245

Non-stipendiary faculty includes the following appointments, which are without remuneration: part-time non-stipendiary clinical faculty, adjunct, Honorary Research Professor and Professor Emeritus.

STUDENT NUMBERS:

Learners in the Doctor of Medicine (MD) program:

Class of 2022	81
Class of 2023	77
Class of 2024	80
Class of 2025	80



Graduate Program	Diploma	Masters	Doctoral
BioMedical Sciences	0	47	33
Community Health and Humanities and Clinical Epidemiology	18	120	45

Postgraduate Medical Education Residents:

Anatomical Pathology	8
Anesthesia	22
Care of the Elderly*	1
Care of Underserved Populations*	1
Child and Adolescent Psychiatry**	0
Diagnostic Radiology	19
Emergency Medicine	6
Family Medicine	69
General Internal Medicine	4
General Surgery	20
Internal Medicine	41
Medical Oncology	2
Nephrology	1
Neurology	12
Obstetrics and Gynecology	18
Orthopedic Surgery	14
Pediatrics	22
Psychiatry	24
Total Active Residents	284

*Discipline of Family Medicine enhanced skills program

** Discipline of Psychiatry subspecialty program

LEADERSHIP CHANGES

After 22 years living in Nova Scotia, Dr. Dolores McKeen (MD'92, MSc'04) returned home to Newfoundland and Labrador in September 2021 to join the Faculty of Medicine as Vice Dean, Education and Faculty Affairs.

Dr. McKeen joined Dr. Reza Tabrizchi, Vice Dean, Research and Graduate Studies, as a senior advisor to Dr. Margaret Steele, Dean of Medicine. Dr. Tabrizchi has been in this role since November 2020. Previous to that, Dr. Tabrizchi was Associate Dean, Research and Graduate Studies, a role he began in September 2012.

Dr. McKeen completed her Doctor of Medicine in 1992 and a postgraduate residency program in the Discipline of Anesthesia in 1997 at Memorial. In 1999, she moved to Nova Scotia, where she fulfilled a Dalhousie University Obstetric Anesthesia Research Fellowship at the IWK Health Centre, and attained an MSc in Clinical Epidemiology in 2004 from Memorial. Prior to her new role at Memorial, she practiced in Halifax and served as both a professor at Dalhousie University and the Chief of the IWK Women's and Obstetric Department of Anesthesia.

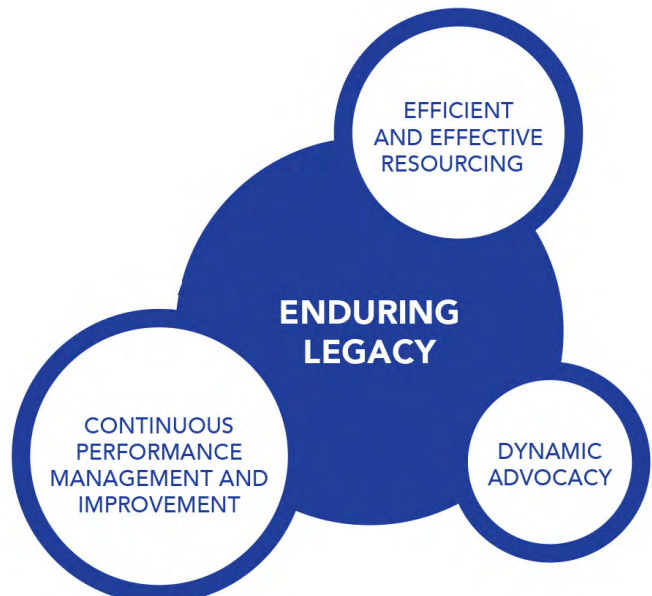
On Sept. 1, Dr. Cathy Vardy (MD'83), Professor of Pediatrics, completed her role as Vice Dean, Education and Academic Affairs, which she had held since 2014. Dr. Vardy has more than 20 years of experience in administrative leadership roles in the Faculty of Medicine, including Assistant Dean of Postgraduate Education, Chair of the Discipline of Pediatrics and Vice Dean. In Fall 2021, she began the role of Executive Director, Medical Program Development with the joint medical degree with the University of Prince Edward Island. Read more about the partnership with UPEI on page 22.



DESTINATION EXCELLENCE

During 2021-22, several key activities and initiatives supporting the ongoing implementation of *Destination Excellence*, the Faculty of Medicine strategic plan, took place.

The annual **strategic planning update and planning days** were held online over two half-days on December 1 and 2, 2021. We were delighted to have Dr. Delores Mullings, Vice Provost, Equity, Diversity, Inclusion and Anti-Racism and Dr. Florentine Strzelczyk, Provost and Vice President (Academic) provide keynote addresses. Each of the sessions had about 90 participants, and feedback on the contents and execution of the two half-days was very positive.



IMPROVING LIVES

- The **DISTRIBUTED MEDICAL EDUCATION (DME) OFFICE** leads implementation of recommendations from a multi-sectoral workshop on increasing physician recruitment and retention in rural Newfoundland and Labrador.
- The **HUMAN GENETICS AND GENOMICS INTERIM STEERING COMMITTEE** was put in place to develop a governance structure appropriate to overseeing the development of an integrated, coordinated and province-wide approach to human genetics and genomics in Newfoundland and Labrador. This is the outcome from foundational work carried out in 2020 and 2021.

EXCELLENCE IN ALL WE DO

- The new **INTERNATIONALIZATION PROJECT TEAM** was put in place in 2021 to develop an internationalization strategy for the Faculty of Medicine that is in alignment with Memorial's internationalization goals.

EMPOWERED PEOPLE

- The **WELLNESS AND WELL-BEING ADVISORY COMMITTEE (WWAC)** was put in place to review the recommendations in the inaugural wellness survey and to begin implementation as well as oversee wellness initiatives.
- The new **EQUITY, DIVERSITY AND INCLUSION (EDI) PROJECT TEAM** was put in place with a mandate to develop a strategy for the Faculty of Medicine's EDI and build capacity and understanding related to EDI matters. The first EDI speaker series featured Dr. Sheryl Heron, Professor and Vice-Chair of Faculty Equity, Engagement and Empowerment in the Department of Emergency Medicine, Associate Dean for Community Engagement, Equity and Inclusion, and Associate Director of Education and Training for the Injury Prevention Research Center at Emory University School of Medicine in Atlanta, Georgia.
- The **CULTURE OF EXCELLENCE TEAM** continues tracking implementation of the unit assessment recommendations with a **HEAT MAP** (below). The team also continues producing professionalism moments for the Dean's Notes, and is working on an accountability progress report to issue from the Dean's Office.

ENDURING LEGACY

- Building on the series of four internal stakeholder feedback sessions held to inform the development and refinement of the **BALANCED SCORECARD**, a Balanced Scorecard Advisory Committee was put in place to oversee capturing and reporting of the various metrics.
- Several units within the Faculty of Medicine finalized their own **UNIT STRATEGIC PLANS AND/OR SERVICE DELIVERY MODELS**, and focus has shifted to implementation of those plans.

Unit Assessment Heat Map:

	Medical Learners	Graduate Learners	Faculty Members	Administration and Other Staff
1	11	19	27	32
2	12	20	28	33
3	13	21	29	34
4	14	22	30	35
5	15	23	31	36
6	16	24		37
7	17	25		
8	18	26		
9				
10				

■ Completed
 ■ In Progress
 ■ Pending

Recommendation 38 and 39 completed

DONOR RECOGNITION AND ALUMNI PRIDE

REMEMBERING DR. HEATHER ONYETT

Following her graduation from Memorial University's medical school in 1974 as its first pediatrician, Dr. Heather Onyett (MD'74) spent five years as chief of pediatrics with the International Grenfell Association.

Dr. Onyett spoke often of her fulfilment working as the solo pediatrician providing care for the Indigenous and settler children living in the remote communities of northern Newfoundland and Labrador, and the resourceful and caring people she came to know and love.

For more than 50 years, Dr. Onyett practised, mentored and volunteered in numerous remote regions of the world, and used all of her vacation leave to volunteer on humanitarian missions or run teaching clinics in underserved communities.

Dr. Onyett's bequest to Memorial University created four scholarships for students in the Faculty of Nursing, the School of Social Work, the School of Pharmacy and the Department of History. She also created an entrance scholarship at Grenfell Campus with priority for students from northern Newfoundland and coastal Labrador, and the Dr. Heather Onyett Convocation Award for the Master of Public Health.

Dr. Onyett passed away on Jan. 6, 2020. The scholarships and award she created at Memorial now help 17 students annually and in perpetuity.

SUPPORTING INDIGENOUS LEARNERS



Dr. Sandy Macdonald.
(Photo: Submitted)

A generous gift from Dr. Alexander (Sandy) Macdonald (MD'86) will help an Indigenous learner from Newfoundland and Labrador or Nunavut further their medical education.

The Dr. W. Alexander (Sandy) Macdonald Bursary for Indigenous Learners is the first of its kind in the Faculty of Medicine. It honored its first recipient in the 2021/22 academic year.

During his time as a medical student in Happy Valley-Goose Bay, N.L., Dr. Macdonald encountered a group of young Canadian family doctors delivering a "very high" standard of care to the people of Labrador.

"I enjoyed all my work in the North, but the 17.5 years I spent in Nunavut as a clinician, medical director and chief of staff was the best job for a family physician in Canada, particularly for anyone with any interest in Indigenous health," Dr. Macdonald says. "I was on the front-line of leading the development of a 21st-century, health-care system for the territory of Nunavut. It was amazing!"

The bursary in Dr. Macdonald's name is awarded annually to an Indigenous learner from Newfoundland and Labrador or Nunavut enrolled beyond the first year of their undergraduate Doctor of Medicine program at Memorial, on the recommendation of the Dean of Medicine's advisory committee on scholarships, bursaries and awards.

Preference is given to an Inuit or Innu learner who graduated from a high school in Labrador or Nunavut and secondly to an Indigenous learner who graduated from a high school in Newfoundland and Labrador.

HONORING KINDNESS AND HELPING STUDENTS IN NEED

For Dr. Imran Hack (MD'79), giving back to Memorial is a way to repay the kindness he received as a student and a newcomer to Newfoundland and Labrador.

"I met kindness everywhere, but some individuals and families stand out to me," said Dr. Hack, who is an internal medicine physician at the Aberdeen Hospital in New Glasgow, N.S. "I directed these bursaries to honour those who were particularly benevolent."

The three most recent contributions were established in the fall of 2021 by Dr. Hack and his wife, Dianne Hack. That includes the Jim and Hilda O'Reilly of Bishop's Falls Memorial Bursary in Medical Education, which annually funds one student in each of the four years of medical training. Two other new bursaries fund students in the Department of Biochemistry in the Faculty of Science.

The opportunity to attend Memorial's medical school is still not lost on him, Dr. Hack says, given that any number of local students could have easily had his spot.

"I want to acknowledge that," he said. "I was given a rare opportunity and I wanted to give back to this province and university."

HONORARY WHITE COAT FOR DR. JANICE FITZGERALD

In September 2021, Dr. Janice Fitzgerald (MD'94, MSc'16), Newfoundland and Labrador's chief medical officer of health, became the Faculty of Medicine's second honorary white coat recipient.

In an extension of the tradition of white coat ceremonies held to welcome incoming undergraduate medical classes, Memorial now annually presents an honorary white coat to a leader in the province's medical profession.

Dr. Fitzgerald was born and raised in Newfoundland and Labrador and earned both her Bachelor of Science and Doctor of Medicine degrees at Memorial. She returned to the province to practice family medicine after completing her residency at Dalhousie.

In 2017, after completing her master of public health degree at Memorial, Dr. Fitzgerald began her career in public health—first with the Department of Health and Community Services, then as the chief medical officer of health.

After receiving her white coat from Dr. Margaret Steele at the ceremony, Dr. Fitzgerald addressed members of the Class of 2025 about the privilege and responsibility of the trust placed in them by patients.



Dr. Janice Fitzgerald. (Photo: Jennifer Armstrong)

ALUMNI SPOTLIGHT: DR. CARLA EDWARDS

Memorial alum Dr. Carla Edwards (MD'00) watched the 2022 Olympic Games from home this winter, but her memories of the 2020 Summer Games in Tokyo are still fresh.

"Surreal would be a good word for it," says Dr. Edwards, who works with Canada's national swim and cycling teams and attended the Olympics in Tokyo in that role in summer 2021.

The Games are one of many valuable experiences that her time at Memorial helped open up for Dr. Edwards, who is a mental health consultant for Swimming Canada and Cycling Canada, and works with the USports Sport Medicine and Research Science Committee and the International Society for Sport Psychology.

Dr. Edwards attended medical school at Memorial University and completed her psychiatry residency at McMaster University, where she has been an Assistant Professor in the Department of Psychiatry and Neurosciences since 2005.

A distinguished student athlete during her studies, her interest and expertise in sport continues with her work with Canadian national teams, where she is part of changing the environment around mental health for competitive athletes.



*Karla Edwards with a friend in Tokyo during the Summer Olympics in 2021.
(Photo: Submitted)*

KEEP IN TOUCH

In spring 2021, the Faculty of Medicine's Development Office launched our digital alumni newsletter. Sent quarterly by email, the newsletter includes updates from the Dean of Medicine, features alumni profiles, research stories and more.

This email newsletter is available to all alumni and is a great way to stay in touch with the work happening at the Faculty of Medicine. For more information on receiving the newsletter and to update your alumni information, please email development@med.mun.ca.

AWARDS AND ACCOMPLISHMENTS

EXCELLENCE IN RURAL MEDICINE

For the eighth time, Memorial University received the Society of Rural Physicians Canada's Keith Award. Established in 2000, the Keith Award annually recognizes the university with the largest number of graduates practicing in rural areas for the most recent 10 years after graduation.



FAMILY PHYSICIAN OF THE YEAR

Dr. Wendy Graham (MD'97) of Port Aux Basques, N.L., an associate professor in the Discipline of Family Medicine at Memorial, was named one of Canada's 2021 Family Physicians of the Year by the College of Family Physicians of Canada (CFPC) and Foundation for Advancing Family Medicine.

With more than 22 years of experience as a family physician, Dr. Graham completed her BSc, MD and family medicine residency at Memorial. She has had a tremendous impact on her community through the promotion of rural medicine and distributed medical education.

*Dr. Wendy Graham.
(Photo: Submitted)*

NATIONAL RECOGNITION FOR MEDICAL EDUCATION LEADERSHIP

Dr. Jane Barron (MSc'89, MD'93), Associate Professor and Chair, Discipline of Laboratory Medicine, was named a Canadian Association of Medical Education (CAME) Certificate of Merit recipient for 2022. This award from CAME recognizes Canadian medical school faculty who are committed to medical education.

Her commitment to medical education includes her teaching and supervision work in neuropathology and pathology to medical learners, residents, nursing students and pharmacy students. She participates in initiatives to introduce the discipline to high school students, and mentors undergraduate and graduate students at Memorial.



Dr. Jane Barron. (Photo: Jennifer Armstrong)

In her research work, Dr. Barron currently collaborates with Dr. Craig Moore's neuroimmunology lab, and Drs. Cynthia Hawkins and Uri Tabori of the Hospital for Sick Children in investigating potential mutations clustering in brain tumours identified in Newfoundland and Labrador. In addition, she is a long-time member of the Memorial's Anatomical Pathology Residency program and a voting member of the Royal College of Physicians and Surgeons of Canada Committee on Specialties, and is involved in the development of Competency By Design for the neuropathology specialty in Canada.

PRESIDENT'S AWARDS FOR OUTSTANDING RESEARCH AND EXCELLENCE IN TEACHING AND GRADUATE SUPERVISION

Two members of the Faculty of Medicine were recognized during Memorial University 2021 President's Awards.

Dr. Matthew Parsons (MSc'06, PhD'11) was awarded the President's Award for Outstanding Research. The award recognizes young researchers who have made outstanding contributions to their scholarly disciplines, and includes a \$5,000 research grant or one-course release (three-credit-hour equivalent course).



Dr. Matthew Parsons. (Photo: Rich Blenkinsopp)

Dr. Parsons, Associate Professor, Division of BioMedical Sciences, is an accomplished cellular neuroscientist specializing in better understanding glutamate, a critical transmitter for normal brain function, and its effects on neurodegenerative conditions such as Alzheimer and Huntington diseases.



From left: Dr. Vianne Timmons, OC and Dr. Michelle Ploughman. (Photo: Rich Blenkinsopp)

Dr. Michelle Ploughman (MSc'03, PhD'07) was awarded the President's Award for Outstanding Graduate and Postgraduate Supervision. The award recognizes individuals who have made a positive impact on their students, colleagues and communities with their commitment to effective teaching and their students' learning.

Dr. Ploughman, Associate Professor, Division of BioMedical Sciences, was nominated by Dr. Augustine Joshua Devasahayam (PhD'20), a former student. "With such world-class training, I thrived in the competitive research environment, won several

grants and received awards in international conferences," Dr. Devasahayam says. "I am confident to say that the training here at Memorial under the supervision of Dr. Ploughman was best-in-class and has put me on par with top-tier researchers."

INAUGURAL CANADIAN CANCER SOCIETY EMERGING SCHOLAR AWARD

Dr. Sheila Garland, Associate Professor, Discipline of Oncology, was among 15 inaugural recipients of the Canadian Cancer Society (CCS) Emerging Scholar Award, valued at \$120,000 per year for five years.

Dr. Garland is developing a smartphone app with a specialized program to help cancer survivors overcome insomnia.

“With this funding, we can better reach the growing cohort of cancer survivors by creatively adapting usual in-person insomnia treatment strategies and take advantage of new technology to reach more people,” said Dr. Garland, who is cross appointed as a Clinical Psychologist and Associate Professor, Psychology, in the Faculty of Science.



Dr. Sheila Garland. (Photo: Rich Blenkinsopp)

Dr. Garland’s collaborators on the project include Dr. Josh Rash, Assistant Professor, Department of Psychology, Faculty of Science; Dr. Veeresh Gadag, Professor of Biostatistics, Division of Community Health and Humanities, Faculty of Medicine; and Dr. Yvonne Leung, Assistant Professor, University of Toronto.



INTERIM DIRECTOR BRINGS EXPERIENCE AND PASSION FOR HEALTH RESEARCH

In September 2021, Dr. Rick Audas was appointed interim director of the Newfoundland and Labrador Centre for Applied Health Research (NLCAHR) following the retirement of Dr. Stephen Bornstein, who held the role for more than 20 years.

Dr. Audas, Professor of Health Statistics and Economics, Division of Community Health and Humanities, brings an impressive record of research and scholarship in health policy analysis, labour, education, health human resources and health technology assessments to his leadership role at NLCAHR.

“We welcome Dr. Audas on behalf of the NLCAHR board,” said Dr. Margaret Steele.

“With your experience and dedication, we know that you, together with the team at NLCAHR, will accomplish a great deal in supporting socially accountable research that improves lives and that has a direct impact on health and healthcare delivery here in Newfoundland and Labrador.”

*Dr. Rick Audas.
(Photo: HSIMS)*

SOCIAL ACCOUNTABILITY



Ritche Perez. (Photo: Rich Blenkinsopp)

PHOTOVOICE PROJECT WITH OFFICE OF PROFESSIONAL AND EDUCATIONAL DEVELOPMENT (OPED) AND COMMUNITY HEALTH AND HUMANITIES

In 2021, a partnership between Stella’s Circle and the Faculty of Medicine provided clients of the charity an opportunity to develop creative and practical skills.

The results of a photography course—PhotoVoice, led by Ritche Perez of the Faculty of Medicine’s OPED—were exhibited in the faculty’s atrium in October.

“Ritche taught us new skills, and he showed us different ways to take the pictures” said student Robyn McCarthy. “We can use that for future projects or jobs.”

As a multimedia specialist at OPED and a well-known local photographer, Mr. Perez also said that teaching the classes was a rewarding way to share his photography skills and help the participants speak about their own experiences and what the image they created meant to them.

In addition to Mr. Perez, Faculty of Medicine learners also volunteered with the project through collaboration with Community Health and Humanities.

“While creating and sharing art can be daunting, doing so is deeply rewarding, and a great way to boost confidence and self-esteem,” said Liam Robbins, a medical student at Memorial.



PhotoVoice exhibit in the Faculty of Medicine atrium. (Photo: Rich Blenkinsopp)



Caption: From left: Drs. Teri Stuckless, Sevtap Savas and Holly Etchegary. (Photo: Rich Blenkinsopp)

PUBLIC INTEREST GROUP ON CANCER RESEARCH IN N.L.

In 2021, the Public Interest Group on Cancer Research in N.L., an academic partnership between community members and Memorial researchers, was created by Dr. Sevtap Savas, Division of Biomedical Sciences, Faculty of Medicine; Dr. Holly Etchegary (MAPS'93, PhD'05), Clinical Epidemiology Program, Community Health and Humanities, and patient engagement lead, NL SUPPORT, Faculty of Medicine; and Dr. Teri Stuckless (MD'03), Cancer Care Program, Eastern Health, and Discipline of Oncology, Faculty of Medicine.

The group's primary interest is to make a positive difference in the lives of cancer patients and families in Newfoundland and Labrador through scientific studies, public engagement and education.

In 2021, the group had 18 volunteer members, including researchers, cancer patients and family representatives. The accomplishments during its first year include a detailed report of its activities and discussions provided to the provincial cancer care program. The Public Interest Group on Cancer Research in N.L. has also developed two proposals, including one for a virtual public conference on cancer to be held in fall 2022.

Drs. Savas, Etchegary and Stuckless, and their fellow volunteer group members, believe that over time, these conversations will promote better cancer awareness, and better cancer care and support in our province.

RESEARCH AND FUNDING



Dr. Janna M. Andronowski.
(Photo: Submitted)

FUNDING FOR BONE HEALTH RESEARCH

Memorial University's musculoskeletal research expertise is growing, thanks in part to a \$445,000, four-year project grant funded by the Canadian Institutes of Health Research (CIHR).

Dr. Janna M. Andronowski and her research team will use high-resolution imaging and laboratory studies to investigate the long-term effects of opioid use on skeletal structure and health. The interdisciplinary research aims to identify how and why opioid use impacts bone quality and fragility over time.

The funded research contributes to the growing scientific knowledge about the serious health effects of the ongoing opioid public health crisis, says Dr. Andronowski, principal investigator and Assistant Professor of Clinical Anatomy in the Faculty of Medicine's Division of BioMedical Sciences.

The research will focus on preventative measures and therapeutic interventions for opioid users and improvements to human identification efforts. The project focuses on microstructural changes to bone in response to long-term or prolonged opioid exposure.

The project will raise awareness of the often-silent comorbidities seen in long-term opioid users. It will also help with graduate student and research staff recruitment and provide student funding.

NATIONAL RECOGNITION FOR HIGH-TECH ARTHRITIS RESEARCH

Mr. Salem Werdyani (MSc'16), PhD student, and Dr. Guangju Zhai, Professor, Discipline of Genetics, Faculty of Medicine, were included on the Arthritis Society of Canada's list of the top 10 research advancements for 2021 in recognition of their innovative studies aimed at transforming the future of arthritis.

The pair studied blood from people living with osteoarthritis—the most common form of arthritis—and discovered three subtypes, fuelling the possibility for personalized treatment.

Using state-of-the-art technology, Mr. Werdyani and Dr. Zhai examined the metabolomic “fingerprints” in blood from hundreds of people from this province who have osteoarthritis and discovered they could be divided into three groups with distinct blood markers.

According to Dr. Zhai, their research could make a big difference for people living with osteoarthritis.

“The results have a great potential in developing clinical actionable tools for stratifying patients for clinical trials and osteoarthritis patient management, as well as providing new targets for developing new drugs for osteoarthritis,”



From left: Drs. Michael Grant, Jacqueline Costello, Melanie Seal and Rod Russell. (Photo: Rich Blenkinsopp)

COVID-19 VACCINE RESPONSE RESEARCH

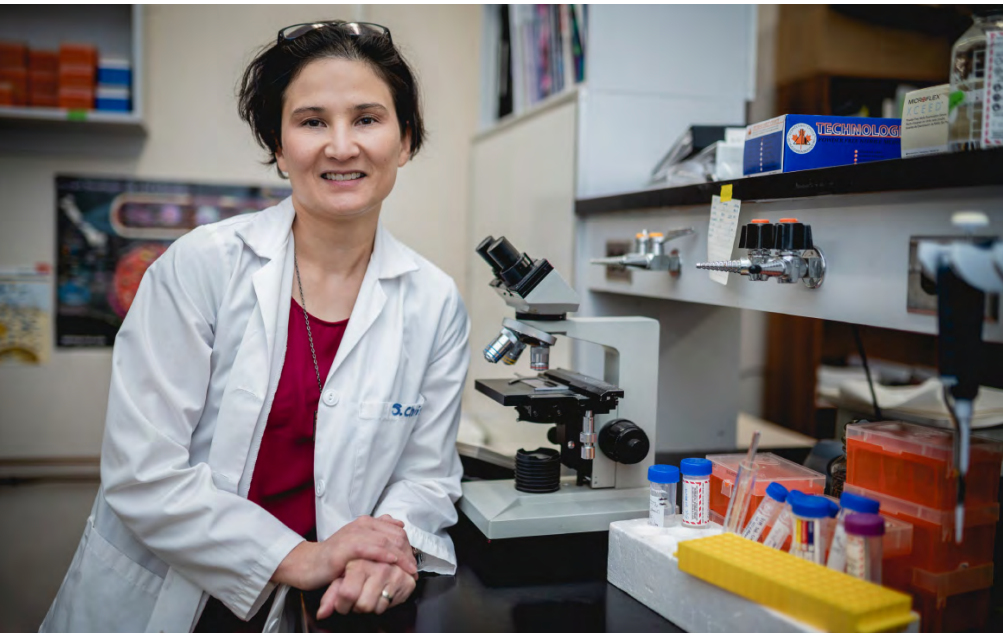
Drs. Jacqueline Costello (MD'08, PGY2'10), Michael Grant, Rod Russell (MSc'00) and Melanie Seal (MD'03, DipClinEpi'05, PGY3'05) received \$379,900 in federal funding from the Canadian Institutes of Health Research to study the immune response to COVID-19 vaccination in cancer patients with both hematological cancers and solid tumours.

A collaboration between the Faculty of Medicine and Eastern Health, the research is an extension of Dr. Grant, postdoctoral research fellow Dr. Kayla Holder (MSc'13, PhD'21) and Dr. Russell's existing project to study immune response to suspected or confirmed COVID-19 exposure.

The study includes patients with either solid tumours or blood cancers. Testing the patients' blood at regular intervals during the study allows researchers to measure their immune response to vaccination and see how it changes.

The information will be useful to analyze how different kinds of patients and different forms of treatment compare to each other. The study will also capture those who received COVID-19 boosters and measure differences in their immune responses.

Patients who enroll in the study will have a unique opportunity to have their antibody levels measured to see if they have had a meaningful response to the vaccine.



Dr. Sherri Christian. (Photo: Rich Blenkinsopp)

PROVINCIAL AND NATIONAL FUNDING FOR ATLANTIC CANCER CONSORTIUM

Memorial is part of the Atlantic Cancer Consortium (ACC), launched in 2021. The consortium is a group of doctors and scientists at leading cancer centres, hospitals and research institutes in Nova Scotia, New Brunswick and Newfoundland and Labrador focused on providing improved cancer outcomes and advancing the quest to deliver precision medicine to cancer patients across the region.

In August 2021, the ACC received \$3.6 million in new provincial and national funding focused on cancer research. The ACC receives the funding over two years from the Terry Fox Research Institute (TFRI), as well as Mitacs and partner organizations in Newfoundland and Labrador, New Brunswick and Nova Scotia to develop infrastructure to accelerate the implementation of precision medicine in the region. Also, by joining the Marathon of Hope Cancer Centres Network, the ACC became one of several pan-Canadian consortia that make up the network.

Memorial's group is led by Dr. Sherri Christian, Associate Professor, Department of Biochemistry, Faculty of Science, who is cross-appointed with the Faculty of Medicine. In addition to Dr. Christian, Memorial's five pilot projects are also lead by Drs. John Thoms (MD'04), Tom Belbin (BSc'90, PhD'99), Kara Laing (BMedSci'91, MD'93), Sheila Drover (MsC'86, PhD'94), Sevtap Savas and Touati Benoukraf.

CANADA RESEARCH CHAIR RENEWAL

In early 2022, Dr. Benjamin Zendel was renewed as a Tier 2 Canada Research Chair (CRC), receiving a five-year award for \$100,000 each year.

Dr. Zendel, Associate Professor, Division of Community Health and Humanities, Faculty of Medicine, was renewed as the Canada Research Chair in Aging and Auditory Neuroscience. He was initially appointed in 2016.

The Cognitive Aging and Auditory Neuroscience Laboratory, is gaining recognition as a state-of-the-art auditory neuroscience lab with specialization in both aging and music perception. The CRC investment allows Dr. Zendel to continue building a team of high quality researchers made up of undergraduate and graduate students, post-doctoral trainees and staff. It will also support growth of the Aging Research Centre–Newfoundland and Labrador (ARC–NL).



Dr. Benjamin Zendel.
(Photo: Submitted)

FIRST GENE FOR COMMON CAUSE OF HEARING LOSS IDENTIFIED

In fall 2021, Memorial University and Western University researchers published their discovery of the first gene for a common cause of hearing loss in adults in Human Genetics.

The study was originally designed by Nelly Abdelfatah, who was a PhD candidate, Faculty of Medicine, Memorial University, at the time and completed her program in 2014. Dr. Abdelfatah is also a current collaborator in the ongoing research. Dr. Terry-Lynn Young (MSc'89, PhD'00), Faculty of Medicine, Memorial University; and Dr. Susan G. Stanton, Western University, were also involved in designing the study.



Dr. Terry-Lynn Young. (Photo: Rich Blenkinsopp)

The researchers identified a causative gene, FOXL1, for autosomal dominant otosclerosis in an affected extended family in Newfoundland and Labrador. The same mutation was also identified in an otosclerosis case in Ontario.

The research discovery comes through collaborative work between Memorial's Faculty of Medicine and Faculty of Science, as well as clinical collaborators at Western University.

The research team is currently looking for other genes related to otosclerosis in other families, in hopes of mapping them with the same techniques used in this study.

PROVINCIAL INVESTMENT TO CONTINUE HEALTH AGING RESEARCH

During Memorial University's annual Research Week in 2021, the Hon. Andrew Parsons, Minister of Industry, Energy and Technology, Government of Newfoundland and Labrador, announced funding to enhance Memorial's reputation as an international innovation leader.

That investment included \$486,331 for wave three of the Canadian Longitudinal Study on Aging research project, led by Dr. Gerry Mugford, a Clinical Epidemiologist in the Faculty of Medicine.

The Canadian Longitudinal Study on Aging aims to better understand what biological, psychological, social, environmental and genetic factors contribute to healthy aging.

The funded research will assist in the identification of conditions, including diseases, mobility impairment, disabilities, mental health, and cognitive decline, resulting in the development of preventive strategies to increase healthy and longer lifespans.



Dr. Margaret Steele. (Photo: Michael Needham)

MEMORIAL AND UPEI ANNOUNCE JOINT MEDICAL DEGREE

On Oct. 8, 2021, Memorial University and the University of Prince Edward Island (UPEI) announced they were developing a joint Doctor of Medicine degree.

This first-in-Canada collaboration brings together the strengths of both institutions, including rural and family medicine, and increases training opportunities for future family doctors and generalist specialists across Atlantic Canada.

The joint program will be primarily based on Memorial University's established curriculum, modified to expand on UPEI's educational strengths and to meet the needs of the people of P.E.I.

In the time since the announcement, a steering committee has been established. A curriculum committee and sub-committees are now focusing on student assessment and programming, admissions, research, graduate studies and other areas as the program is developed.

The process to receive full accreditation for the program from the Committee on Accreditation of Canadian Medical Schools (CACMS), and approval from the Atlantic Advisory Committee on Health Human Resources (AACHR) and the Maritime Provinces Higher Education Commission (MPHEC), is also underway.

Regular updates for the collaboration are available on the UPEI Faculty of Medicine website: www.upei.ca/medicine

SUPPORTING NORTHERN MEDICAL EDUCATION

Memorial University renewed its Memorandum of Understanding (MOU) with the Nunavut Family Medicine Residency Program (NunaFam), a collaborative educational partnership of the Government of Nunavut and the Discipline of Family Medicine at Memorial University.

The renewed MOU is a continuation of an agreement first made in 2011, when Memorial University was chosen as a partner for enhanced rural/remote training in Nunavut for family medicine residents.

NunaFam is a stream of Memorial's family medicine residency program that offers six months of second-year training in Nunavut. Participating residents are based at Qikiqtani General Hospital in Iqaluit and have opportunities to work in smaller communities around the territory. Medical interpreters are available to support patients and family doctors in Nunavut during their residency training, as about 85% of Nunavut's population is Inuit and Inuktitut is the first language for many people living there.

Participants in NunaFam gain valuable experience in rural and remote health-care. Residents learn about practicing full-scope family medicine in isolated environments and develop cultural competency skills that support their work with Indigenous communities.

ANATOMY LAB UPGRADES COMPLETED

Eighteen months of renovations for Memorial University's anatomy lab suite, in 2020 and 2021, led to more varied learning experiences and more highly engaged medical learners.

The anatomy lab renovation began due to a ventilation issue, says Dr. Patricia Cousins (PhD'05), manager of medical laboratories. Because the space is on Eastern Health property, Memorial received capital funding from the health authority to finance the installation of a new HVAC unit and ducting for the multi-disciplinary labs, the anatomy labs and the histology labs to return 100% fresh air into the lab spaces.

On Sept. 30, 2021, the Faculty of Medicine took formal repossession of the lab suites. The technical additions made in order to maintain the quality of the faculty's anatomy education now contribute to its varied curriculum delivery.

Twelve new ultrasound machines support anatomy education through the Point-of-Care Ultrasound program. The Faculty of Medicine now has the highest ultrasound capacity in the country for teaching purposes and the machines are the same ones learners use during their clerkships and residencies.

Also within the lab is an Anatomage table—a virtual dissection table—which is the only one located east of Quebec and provides another type of technologically supported anatomy learning.

The result is a medical education offering providing a range of ways for students to learn and engage with anatomy.

Having wet anatomical specimens available expands what instructors can do in their curriculum, says Dr. Janna M. Andronowski, Assistant Professor of Clinical Anatomy, Division of BioMedical Sciences and Undergraduate Medical Education Anatomy Lead. One of those expansions has been Dr. Andronowski's newly available graduate-level human anatomy course. In addition to its educational uses, the renovated anatomy suite now fully supports various preservation methods for Memorial's Anatomical Gift Program. For more information about the program, contact Dr. Cousins at patricia.cousins@med.mun.ca or 709 864 3360.

For more information about that program, contact Dr. Cousins at patricia.cousins@med.mun.ca or 709 864 3360.



*The renovated anatomy lab at Memorial University.
(Photos: Jennifer Armstrong)*



ADMISSIONS

Doctor of Medicine Program

The Admissions Office continues its move to virtual applicant assessments, which began due to public health orders during the pandemic. Virtual assessments will likely continue going forward, as they ensure equitable access and reduce the risk of interruptions due to poor weather. This past admissions cycle used asynchronous virtual assessment, but the goal is to re-introduce live virtual interactions with a more personal feel.

The diverse admissions committee also meets virtually to deliberate and holistically rank candidates. The assessment tools allowed us to select a solid entering class. While there will always be a level of subjectivity, they have incorporated interview rubrics to improve inter-rater reliability. As national standards evolve, the admissions office continues to participate in the Association of Faculties of Medicine of Canada (AFMC) Admissions Network to ensure our tools remain equitable and allow us to contextualize candidates' accomplishments.

UNDERGRADUATE MEDICAL EDUCATION (UGME)

The UGME team is responsible for the delivery of the Doctor of Medicine (MD) program at Memorial University. The delivery of the MD program continued to be impacted by the COVID-19 pandemic during the 2021-22 academic year. This required hybrid methodologies for curriculum-delivery including pre-recorded, livestream and in-person sessions. When COVID-19 isolation or infection caused learner or faculty absences, in-person events were livestreamed for remote participation.

The first- and second-year community placements and clinical skills sessions returned to in-person delivery. Third- and fourth-year clinical learning continued with minor modifications, as needed, to accommodate learners who missed portions of their clinical learning experiences due to the pandemic.

The UGME team continued to meet regularly with the Office of the Dean and the Medical Student Society (MedSoc) to discuss current topics and events related to undergraduate medical education, and to update learners, faculty and staff by email as needed.

STUDENT SPOTLIGHT: ANDREW ROBART



(Photo: Jennifer Armstrong)

This year's Canadian Medical Hall of Fame inductee is Andrew (Drew) Robart, a learner from Memorial University's MD class of 2023. Andrew stands out among his peers as someone who demonstrates the qualities of perseverance, collaboration and entrepreneurial spirit, and has made a notable contribution to national and global health. Congratulations, Andrew!

UNDERGRADUATE MEDICAL EDUCATION ACCREDITATION

The Committee on Accreditation of Canadian Medical Schools (CACMS) establishes standards for the accreditation of Canadian medical schools to ensure continuous quality improvement, dynamic and innovative academic programming and excellence in teaching and learning. CACMS site visits for each medical school occur at least once every eight years. However, due to the COVID-19 pandemic, Memorial University's site visit was postponed from May 2021 until April 2022, nine years after its most recent full-accreditation site visit.

For the site visit in April 2022, CACMS enlisted a virtual site visit team to conduct remote meetings with key members in the delivery and support of undergraduate medical education at Memorial, including faculty, learners and staff. The Faculty Undergraduate Accreditation Lead (FUAL), Dr. Taryn Hearn (MD'02, PGY5'06), and Curriculum and Accreditation Advisor, Brian Kerr (BA'90, MA'97, PhD'16), led faculty, learners and staff in preparing the Data Collection Instrument (DCI), the Medical School Self-Study (MSS) and other important documentation for review by the site visit team. The Independent Student Analysis (ISA) team was led by Georgia Darmonkow (MSc'19), a second-year learner in the MD program and president of Memorial University's MD class of 2024.

OFFICE OF LEARNER WELL-BEING AND SUCCESS (LWS)

The Office of Learner Well-Being and Success (LWS) celebrated its first anniversary under a new structure on July 1, 2021. The office continues to review and enhance its many programs, with the goal of increasing individual and institutional well-being, resiliency and ability to thrive under stress and changing circumstances.

Highlights from the past year:

- Facilitated presentations about the Office of LWS to 10 clinical disciplines.
- Participated with Distributed Medical Education (DME) in seven Listening and Learning sessions across distributed sites.
- Facilitated a number of sessions for learners including On Being Human sessions, financial literacy series and mentorship.
- Implemented Navigate, a free mobile app allowing learners to connect with needed supports. Since implementation on August 6, 2021, learners have scheduled 342 appointments with LWS staff and directors in the areas of academic well-being, personal well-being, financial guidance and career advising.
- Implemented well-being half-days for Phase 4 clerks.
- Partnered with Change to Office of Educational and Professional Development (OPED) and Postgraduate Medical Education (PGME) and received funding from Workplace NL to perform a study exploring the experiences of postgraduate trainees and their perceived mental-health and well-being challenges, resiliency and coping supports during the COVID-19 pandemic.
- Collaborated with Dr. Greg Radu (PGY5'09), Associate Dean, LWS and three professors to develop and deliver a four-day course in Learner and Faculty Well-Being through the Association for Medical Education in Europe (AMEE) and Essential Skills in Medical Education (ESME). The course introduced contemporary literature and practices in supporting learner and faculty well-being in health professions' education and health care.
- Facilitated weekly meditation sessions.
- Held regular Gathering Rounds sessions for peer support.
- Created and maintained their own Facebook page.

**On Being Human:
Our Stories in Medicine**

Join our panelists as they share their well-being challenges during med school and how they overcame them.

OCT 14 • 6-8 PM
Faculty of Medicine,
1M101

Claire Neilson
Class of 2024

Katie Harris
Class of 2023

Kaitlyn Jarvis
Class of 2025

MEMORIAL UNIVERSITY
LEARNER WELL-BEING AND SUCCESS

STUDENT SPOTLIGHT: DR. ALAIN BATEMAN



(Photo: Submitted)

Dr. Alain Bateman was named a Canadian Association for Medical Education (CAME) Rising Star Certificate of Excellence recipient for 2022. This award from the CAME recognizes learners with a demonstrated passion for medical education.

Dr. Bateman is a post-graduate medical learner in the second year (PGY2) of his psychiatry residency at Memorial University and the resident lead for the discipline's competency-based medical education implementation team (CBMEIT). He contributes as a member of committees including the critical appraisal committee and research committee in the discipline, and the Canadian Psychiatric Association Members in Training Sub-Committee.

Dr. Bateman said his interest in medicine was initially inspired by the depiction of the work of physicians in Camus' *Dr. Rieux*. "I think of medicine as a straightforward path to being of use to my community while providing an unlimited opportunity for self-growth," Dr. Bateman said. Congratulations, Alain!

POSTGRADUATE MEDICAL EDUCATION (PGME)

The strength and dedication of our people, including staff, program directors and program administrators, continues to be a highlight and strength of Memorial's PGME community.

In addition to their role as frontline health-care workers, learners work together to ensure appropriate distribution of work commensurate with their level of expertise. They support each other in times of need, both within their current cohort and for the incoming cohort due to begin their training on July 1, 2022.

Continuing its mission to evolve into a proactive institution, PGME has pursued several initiatives including hosting ongoing learner town-hall sessions for each program. These events were broken down by discipline and postgraduate-year level and aimed to improve direct connections to postgraduate learners to enhance the quality of training programs and identify hidden curricular concerns. Based on the success of these events, this initiative will be regularly offered.

Work on a PGME-wide approach to fatigue risk management, an overhaul of policies, attention to quality improvement education, a revamp of the academic half-day curriculum and continued growth in our program evaluation initiatives continue.

Additional successes:

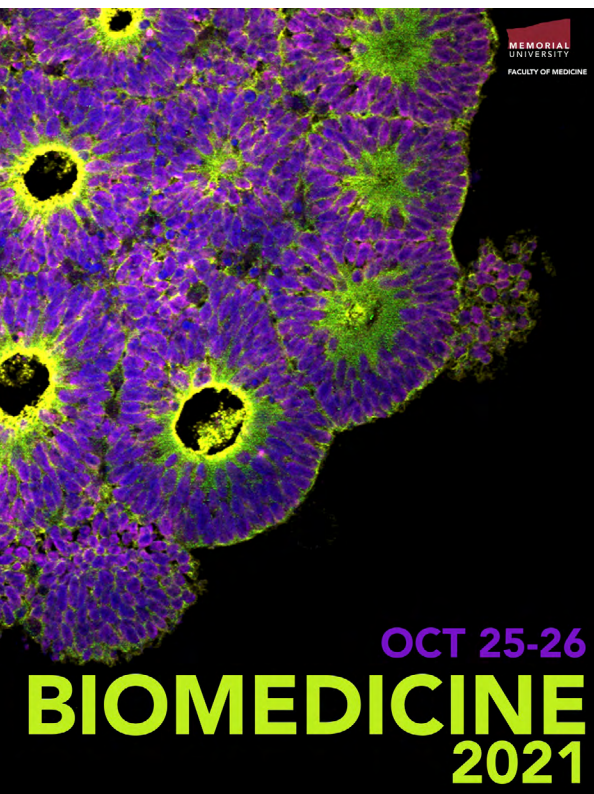
- All programs to fully launch Competence By Design by July 1, 2022.
- Successful appointment by PGME of a number of new faculty leads to systemically enhance the institutionalization of its continuous quality improvement efforts.
- Exploration of avenues to enhance postgraduate training offerings at Memorial University.
- Two evaluation retreats held.
- Evaluation and Assessment Officer hired.
- Several specialty PGME sub-committees were formed: valuation, Internal Review Oversight Committee (IROC), Policy and Fatigue Risk Management.
- Internal reviews are in process.
- Successfully filled all 81 PGY positions with 59% Memorial University MDs, 31% Canadian Medical Graduates and 10% International Medical Graduates.
- Staff were involved in various Memorial specialty committees including wellness, scholarship and equity, diversity and inclusion, strategic planning and internalization.
- The creation of three marketing videos with the themes: people, place, and program which are hosted on the Faculty of Medicine's [YouTube channel](#).

RESEARCH AND GRADUATE STUDIES

As graduate students, supervisors and programs eased out of pandemic conditions, the learning environment became more blended, with increased in-person participation. In the past year, 13 PhD oral comprehensive exams and 12 PhD defenses were completed in a virtual or blended format for doctoral students in the Faculty of Medicine. Fall convocation returned to an in-person event at the Arts and Culture centre and over the past year, 73 medicine graduate students received their degrees.

The Canadian Student Health Research Forum continued with virtual participation in 2021 and three PhD students from the Faculty of Medicine participated. Congratulations to Lisa Fang, who received an honourable mention for her research poster presentation.

Research exchange continued in the Faculty of Medicine, with visiting speakers providing virtual research seminars to faculty and students. As part of the virtual series, Dr. Lynn McAlpine was invited to give a career preparation seminar to graduate students and postdoctoral fellows in the health sciences.



Cover for the BioMedicine Symposium 2021.

now converted to a human participant recruitment and study enrollment station to welcome remote and underserved communities to research.

The BioMedicine 2021 graduate research symposium was hosted at the Johnson Geo Centre in a blended format (virtual and in-person), featuring visiting speaker Dr. Nancy Merner (PhD'11) of Auburn University, a PhD graduate of the human genetics program in the Faculty of Medicine. Dr. Merner gave a wonderful presentation about EDI principles embedded in their cancer research program, featuring the Gene Machine 15-passenger bus

STUDENT SPOTLIGHT: KAYLA ST. CROIX



From left: Kayla St. Croix and Dr. Margaret Steele.
(Photo: Jennifer Armstrong)

Kayla St. Croix, a Master of Public Health (MPH) graduate in Faculty of Medicine's Population/Public Health stream, received the 2021 Dr. Heather Onyett Convocation Award in recognition of her leadership in health promotion.

Ms. St. Croix led the planning, implementation and evaluation of "How are you, Mom?," a health-promotion project addressing post-natal wellness and barriers to care. She also authored "Supporting breastfeeding in rural Newfoundland and Labrador communities during COVID-19," a commentary in the Canadian Journal of Public Health that was noted by the Public Health Agency of Canada.

In addition to earning her MPH, Ms. St. Croix is a registered nurse with neonatal intensive-care experience and completed Eastern Health's required Health Promotion Division, Population and Public Health practicum in the area of post-natal maternal mental health. Congratulations, Kayla!

NEW BRUNSWICK

Over the past 11 years, the Government of New Brunswick invested in establishing two satellite campuses, one with Dalhousie University in Saint John and the other with Université de Sherbrooke, in Moncton. In September 2021, the Government of New Brunswick announced they would no longer fund 10 Undergraduate Medical Education seats at Memorial University. The phasing-out process for this funding will not impact current students. Funding will continue to support current New Brunswick students, as well as the incoming learners for the final New Brunswick cohort in the Fall of 2022.

Despite the phase-out process, the New Brunswick team continues to foster the relationships between Memorial and the province. The team currently consists of the New Brunswick (N.B.) Assistant Dean, Dr. Todd Lambert (MD'97); two site directors for the LIC sites, Dr. Gary Duguay and Dr. Rachel Ouellette (MD'07); three LWS directors, Dr. Natalie Graves (MD'12), Dr. Katie Doucet and Dr. Jill Goodyear (MD'96); and an administrator at each main teaching site (Lisa Russell, Brooke Lapointe and Heather Rogers).

This academic year, New Brunswick successfully launched a second site for two Longitudinal Integrated Clerkship (LIC) learners in Fredericton, N.B. Our team also published the second MUN N.B. newsletter and the New Brunswick unit's strategic plan. In October 2021, the MUN N.B. team travelled to the main campus in St. John's. These meetings reinforced the desire to continue to foster opportunities for collaboration, oversight, learner training and capacity.

OFFICE OF PROFESSIONAL AND EDUCATIONAL DEVELOPMENT (OPED)

MyPractice

OPED partnered with the Family Practice Renewal Program to design and develop the MyPractice program. My Practice is a training and support program that helps family physicians navigate the process of setting up a family medicine practice in Newfoundland and Labrador, navigate from one practice to another or transition from active practice to retirement. Certified self-directed online modules, live boot camps and a mentor-matching service are some of the options available. Visit the site for more information and to register for learning opportunities.

Certificate in Local and Global Health Equity

Once again, OPED offered this sought-after certificate program via online learning. Rooted in social determinants of health, this program explores the social accountability side of medicine by exploring what health equity is, how it relates to the health and well-being of the people of our province and beyond and what that means in medical practice.

MedQuest (Virtual)

Virtual learning continued to be the new normal for many programs this year. After pausing in 2020 due to COVID-19, the flagship MedQuest program was re-invented in summer 2021 for virtual delivery.

MedQuest Virtual is a career-oriented two-day virtual event for all students in grades 10-12 in Newfoundland and Labrador interested in careers in the health sciences. More than 100 high-school students from across the province registered for the program, which was offered again in summer 2022.

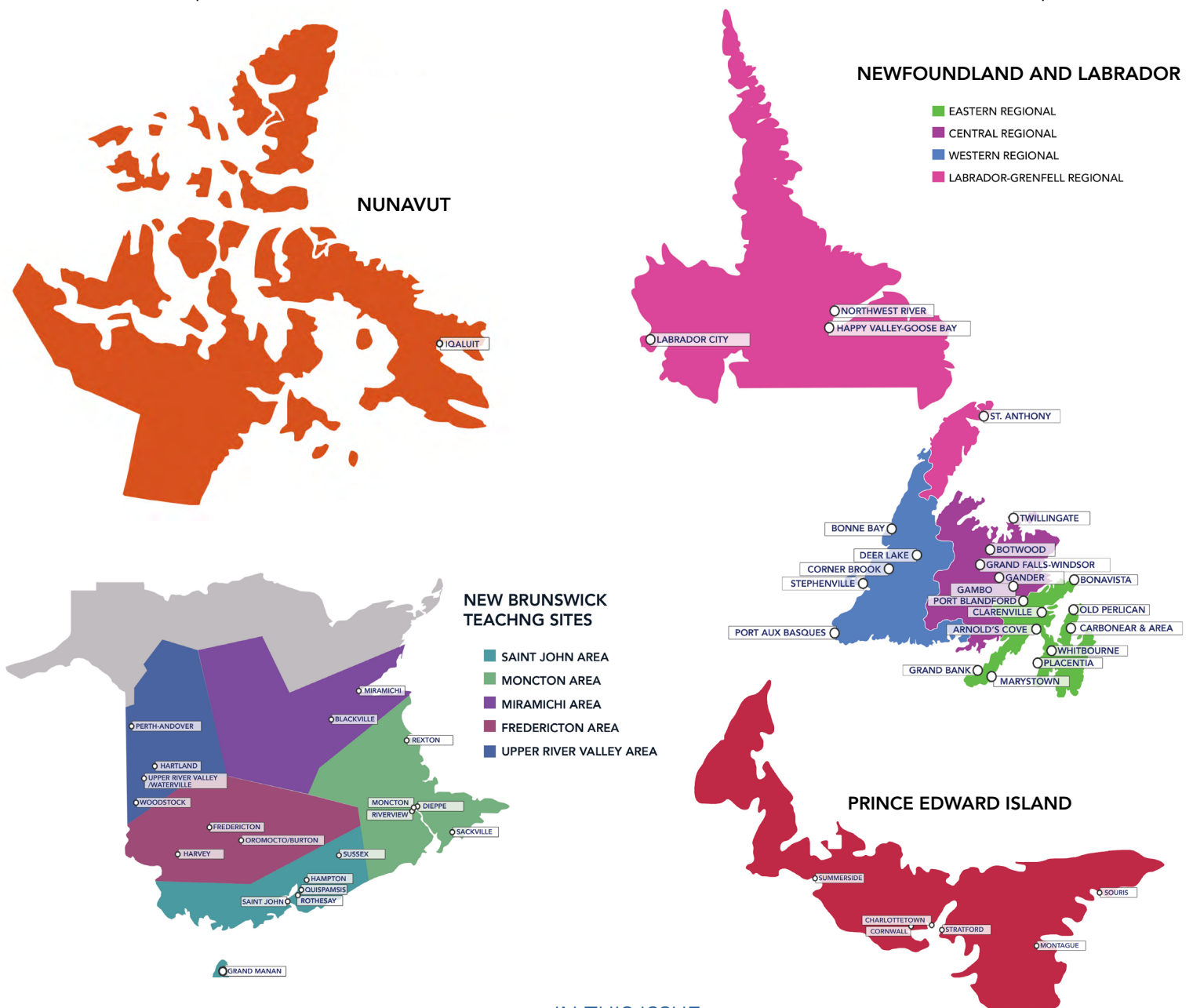
DISTRIBUTED MEDICAL EDUCATION (DME)

Having been the backbone of rural and remote medical education delivery in the provinces of Newfoundland and Labrador, New Brunswick and Prince Edward Island and the territory of Nunavut for many years, the Office of DME was officially launched in July 2021 and is led by Dr. Andrew Hunt (BSc'05, MD'09, PGY3'11), inaugural Assistant Dean of DME. The office establishes and fosters the growth of collaborations and networks within the aforementioned provinces to optimize distributed educational experiences for faculty and learners at all stages of undergraduate and postgraduate medical programs.

The Office of DME embarked on a virtual tour of Newfoundland and Labrador, visiting all 27 distributed teaching sites and strengthening its networks and relationships.

The office also spearheaded a steering committee to ensure implementation of 10 physician recruitment and retention strategy recommendations from a multi-stakeholder, provincial workshop. Through collaborative work with the provincial government and Municipalities NL, the Office of DME helped create a municipalities toolkit. This work was presented at the Municipalities NL Conference in Corner Brook in November 2021.

The Office of DME continues to promote safe learner, staff and faculty growth through rewarding distributed education experiences, as guided by the Faculty of Medicine's *Destination Excellence* strategic plan.



ADVANCING HEALTH CARE

NL SUPPORT

During the 2021-2022 financial year, the NL SUPPORT unit transitioned to Phase II of the CIHR's Strategy for Patient Oriented Research (SPOR) initiative. This transition in October 2021 brought changes to some of the core services that NL SUPPORT provides—most notably, the introduction of a core service to develop a local Learning Health System to facilitate change within the provision of health-care services and clinical practice.

Additional Phase II requirements include working more closely with other SUPPORT units and SPOR entities. In line with this requirement, NL SUPPORT has worked closely with the SPOR network Diabetes Action Canada to identify opportunities for enhanced diabetic service provision within the province.

Throughout the year the unit continued to provide patient engagement, knowledge translation, training, data management and methodological support services. In addition, NL SUPPORT relaunched its patient-oriented research funding opportunities including health professional-led research grants, graduate student funding and undergraduate training in research awards. The unit looks forward to the opportunities offered by this second phase of the SPOR initiative.



Enterprise IBM large-scale storage servers in the Centre for Analytics, Informatics and Research. (Photo: Rich Blenkinsopp)

CENTRE FOR ANALYTICS, INFORMATICS AND RESEARCH (CAIR)

In addition to providing ongoing high-performance compute, data analysis and secure storage services to meet users' needs, the Centre for Health Informatics and Analytics' (CHIA) focus for the first nine months of the year was to secure funding to refresh the hardware originally purchased in 2014. Through the strengthening of the partnership with IBM, and the development of a new and much-welcomed partnership with Memorial's Department of Computer Science, the CHIA team were informed in December 2021 that the funding applications submitted to ACOA and the Department of Industry, Energy and Technology (N.L. Government) were successful.

These applications and the IBM partnership resulted in more than \$18 million of funding to refresh the hardware, facilitate student training and fund highly qualified professionals to operate the data management centre. A rebranding to the Centre for Analytics, Informatics and Research (CAIR), which accompanied the renewed funding, reflects CAIR's extended scope to provide research data-management services across Memorial's campuses.

Throughout the first three months of 2022, the CAIR team worked with IBM to install the new hardware. CAIR's services will be fully operational in summer 2022.

REIMAGINING HEALTH AND HEALTH CARE

The work of Health Accord NL continued this year, and various milestones were achieved on the way to reimagining health and health care in Newfoundland and Labrador.

Throughout the Health Accord NL process, the vision has remained: to use evidence, strategies and public engagement to create a 10-Year Health Accord that will improve health in Newfoundland and Labrador, and do so within the fiscal envelope of the province.

As co-chairs of Health Accord NL, Dr. Patrick Parfrey and Sister Elizabeth Davis led the Health Accord NL Task Force, of which Dean Steele was a member. Also, more than 100 committed volunteers across various social and health-related fields participated on six strategy committees and four working groups. Many of those volunteers are familiar names to the Faculty of Medicine, and they are listed in the appendices of the Health Accord NL Report.

The dedication of all participants enabled Health Accord NL to release the Interim Report (April 2021) and the Health Accord NL Report (February 2022). Both reports can be found at <https://healthaccordnl.ca/>.

Quality of Care NL, a Memorial-based program, continued playing a vital role throughout the Health Accord NL process. Program staff assisted with the collection, analysis and interpretation of evidence, provided the secretariat for the Task Force, and provided communications and engagement support.

In addition to the contribution of everyone directly involved, the Health Accord remained focused on consistent and transparent engagement. Throughout the process, more than 500 meetings were held with various health- and social-system stakeholders, and more than 35 public town halls were held to ensure everyone's voice could be heard.

The final Health Accord NL materials—the Blueprint for Implementation and the Evidence Archive—are scheduled to be submitted in May or June 2022.



Health Accord

for Newfoundland & Labrador

➤ A 10-year health transformation



Faculty of Medicine

COMMUNICATIONS.OFFICE@MED.MUN.CA