


WestFam



NEWFOUNDLAND & LABRADOR, CANADA
WWW.MUN.CA





“WestFam” is a Stream of the MUN Family
Medicine Residency Program that is based within
the Western Region of the Island of
Newfoundland.



The West Coast



Western Health's geographical boundaries serve a population of approximately **78,000 residents**.

The region spans from Port aux Basques southeast to Francois, northwest to Bartlett's Harbour and on the eastern boundary north to Jackson's Arm.



- Western Health provides a broad range of programs and services based in both **community** and **facility settings**.
- The Western Stream is strongly supported by Western Health and provides opportunities for residents to train within a number of Family Medicine teaching sites located **throughout the Western Region**:



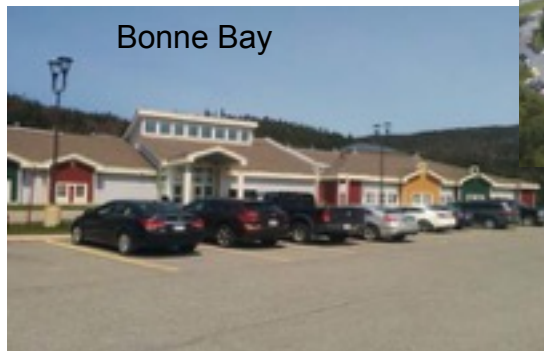
Port aux Basques



Stephenville



Corner Brook



Bonne Bay



Pasadena

Collectively, these teaching sites offer a wide range of practical experiences within **Broad-Scope Family Medicine** including:



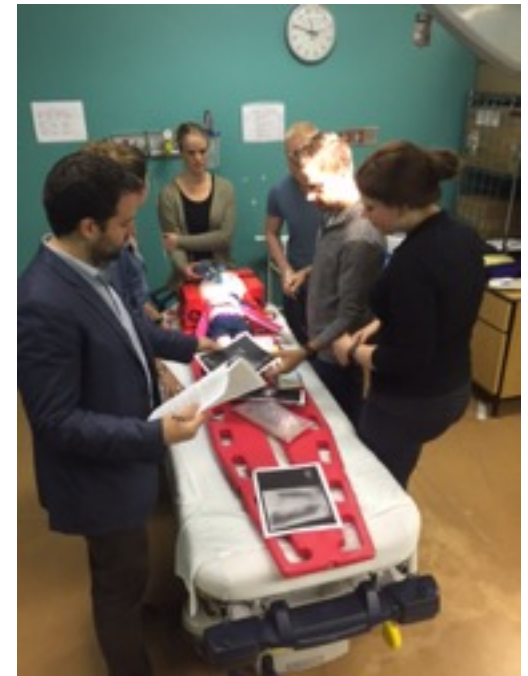
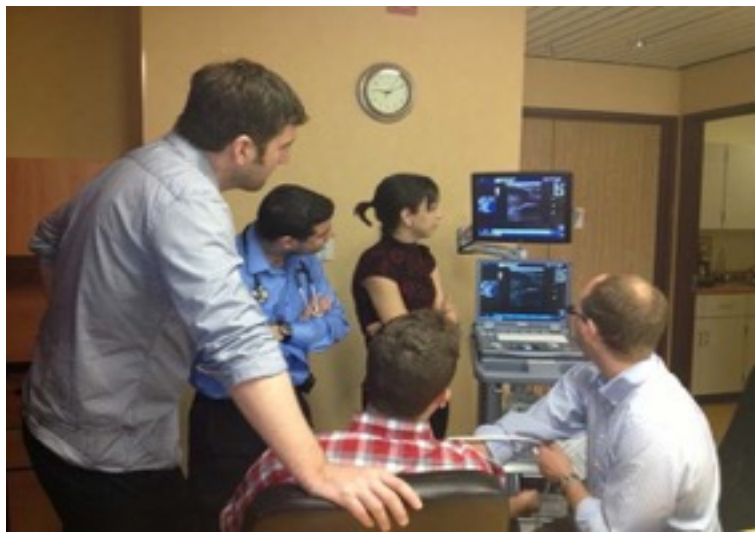
- Community based Family Medicine
- Shared care obstetrics
- In-patient hospital care
- Newborn, paediatric and adolescent care
- Home visits/After hours call
- Mental health counselling/psychotherapy
- Geriatric and palliative care
- Minor procedures
- Emergency medicine
- Interdisciplinary care
- Academic Family Medicine
- Specialty Disciplines
 - Palliative Care
 - Internal Medicine
 - General Surgery
 - Orthopedics
 - Obstetrics/Gynecology
 - Pediatrics
 - Emergency Medicine
 - Ophthalmology
 - Dermatology
 - Neurology



What we offer!



- Strong team of committed preceptors
- Diverse patient population, complex medical needs – both chronic and acute care
- **Broad Scope Family Medicine**
- Family Medicine Rounds, Grand Rounds, Problem Based Small Group Learning Sessions
- Delivery of **Exam Prep and SOO workshops**
- Interdisciplinary Practices
- **Academic and Skills Workshops**
- Wellness workshops
- Point of Care Ultrasound
- EMR experience
- Student Health
- **3D printing lab**
- **High Fidelity SIM lab**
- Opportunities for experiences in neurology, ophthalmology, critical care/airway management, procedural skills, ICU and practice management







Sample Templates



Family Medicine Residency Program --- July 1, 2017 to June 30, 2019 - Year 1 & Year 2 (DRAFT)

1st Year Dates (2017/18)	July 1 - July 30	July 31 - Aug 27	Aug 28 - Sept 24	Sept 25 - Oct 22	Oct 23 - Nov 19	Nov 20 - Dec 17	Dec 18 - Jan 14	Jan 15 - Feb 11	Feb 12 - Mar 11	Mar 12 - Apr 8	Apr 9 - May 6	May 7 - June 3	June 4 - June 30
2nd Year Dates (2018/19)	July 1 - July 29	July 30 - Aug 26	Aug 27 - Sept 23	Sept 24 - Oct 21	Oct 22 - Nov 18	Nov 19 - Dec 16	Dec 17 - Jan 13	Jan 14 - Feb 10	Feb 11 - Mar 10	Mar 11 - Apr 7	Apr 8 - May 5	May 6 - June 2	June 3 - June 30
1st Year (Template A)	Peds Emerg - Janeway	Int. Med. - St. Clare's	Int. Med. - Corner Brook		Ortho - Corner Brook	Obs/Gyn - Corner Brook		Academic Family Medicine (Corner Brook - S. Butt)				Emerg - Corner Brook	Surgery - Corner Brook
2nd Year (Template A)	Elective	Elective	Rural Family Medicine (Bonne Bay)				PCU - Corner Brook	Care of the Elderly	Peds	Academic Family Medicine (Corner Brook - Whitten)			
1st Year (Template B)	Obs/Gyn - Corner Brook		Surgery - Corner Brook	Peds Emerg - Janeway	Int. Med. - St. Clare's	Int. Med. - Corner Brook		Academic Family Medicine (Corner Brook - Wellness)			Ortho - Corner Brook	Emerg - Corner Brook	
2nd Year (Template B)	Elective	Elective	PCU - Corner Brook	Rural Family Medicine (Corner Brook - Wellness)				Peds	Care of the Elderly	Academic Family Medicine (Corner Brook - S. Butt)			
1st Year (Template C)	Academic Family Medicine (Pasadena)				Peds Emerg - Janeway	Int. Med. - St. Clare's	Int. Med - Corner Brook		Emerg - Corner Brook	Obs/Gyn - Corner Brook		Surgery - Corner Brook	Ortho - Corner Brook
2nd Year (Template C)	Elective	Elective	Peds	Academic Family Medicine (Corner Brook - Broadway)				Rural Family Medicine (Corner Brook - Broadway)			PCU - Corner Brook	Care of the Elderly	
1st Year (Template D)	Academic Family Medicine (Corner Brook - Coleman/O'Driscoll)				Obs/Gyn - Corner Brook		Emerg - Corner Brook	Surgery - Corner Brook	Ortho - Corner Brook	Peds Emerg - Janeway	Int. Med. - St. Clare's	Int. Med. - Corner Brook	
2nd Year (Template D)	Elective	Elective	Academic Family Medicine (Deer Lake)				Peds - Deer Lake	Rural Family Medicine (Corner Brook - Coleman/O'Driscoll)			Care of the Elderly	PCU - Corner Brook	
1st Year (Template E)	Surgery - Corner Brook	Emerg - Corner Brook	Peds Emerg - Janeway	Int. Med. - St. Clare's	Int. Med. - Corner Brook		Ortho - Corner Brook	Obs/Gyn - Corner Brook		Academic Family Medicine - Port Aux Basques			
2nd Year (Template E)	Elective	Elective	Academic and Rural Family Medicine/Care of the Elderly/Palliative Care/Pediatrics - Port Aux Basques										
1st Year (Template F)	Emerg - Corner Brook	Peds Emerg - Janeway	Int. Med. - St. Clare's	Int. Med. - Corner Brook		Academic Family Medicine - Port Aux Basques				Ortho - Corner Brook	Surgery - Corner Brook	Obs/Gyn - Corner Brook	
2nd Year (Template F)	Elective	Elective	Academic and Rural Family Medicine/Care of the Elderly/Palliative Care/Pediatrics - Port Aux Basques										

Unique Opportunities



With a broad range of medical illnesses, a diverse patient population and a variety of practice opportunities, the Western Region is poised to offer **rich training opportunities** for family medicine residents.



The “Wreckhouse”

Just East of Port Aux Basques is home to the ‘Wreckhouse Area’ which boasts the **highest winds** in all of North America.

The combination of high winds and busy traffic along the TCH results in a high volume of traffic related accidents and a **high level of trauma**.



Port Aux Basques has a trauma rate **TEN TIMES** greater than that of other sites its size resulting in many opportunities to learn advanced skills in Trauma and Transport Medicine.



Our Goal

The goal of the Western Stream is to provide a dynamic, rich learning environment that will prepare family medicine residents to be confident and competent physicians ready to manage a variety of clinical situations in a wide range of practice environments.





Lifestyle

In addition to the variety of training opportunities, the Western Region of Newfoundland offers a wide range of extracurricular activities in which to enhance your lifestyle and help obtain a healthy **work-life balance.**

There is so much to see and do in this area of the province!

Whether it is engaging in our rich arts community through theater, dance or visual arts, challenging yourself with our breathtaking, rugged terrain or embracing the diversity of our dynamic water playgrounds, our residents can become actively involved in an endless number of leisure activities.



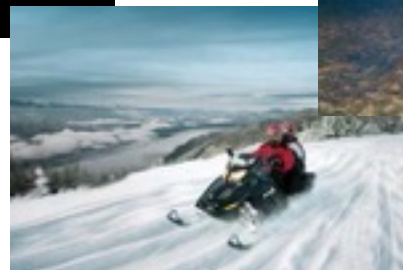
We truly have an embarrassment of riches!



Salmon Fishing



Stephenville
Theatre Festival

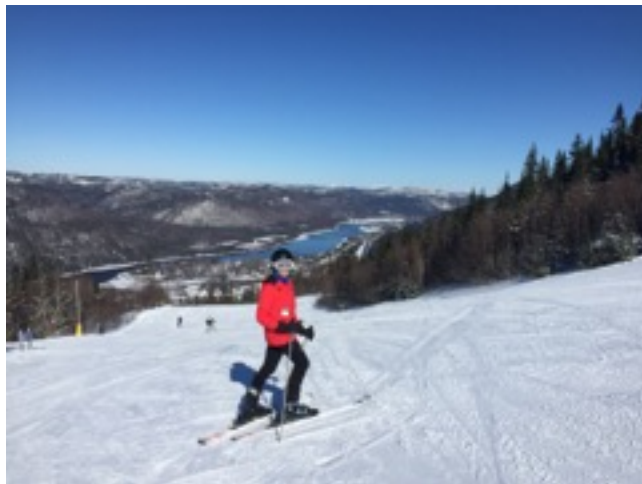


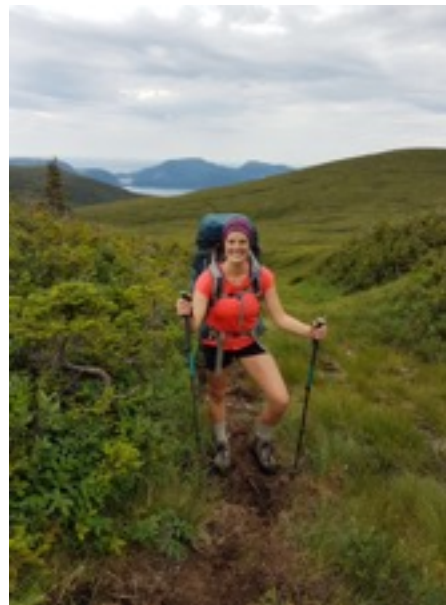
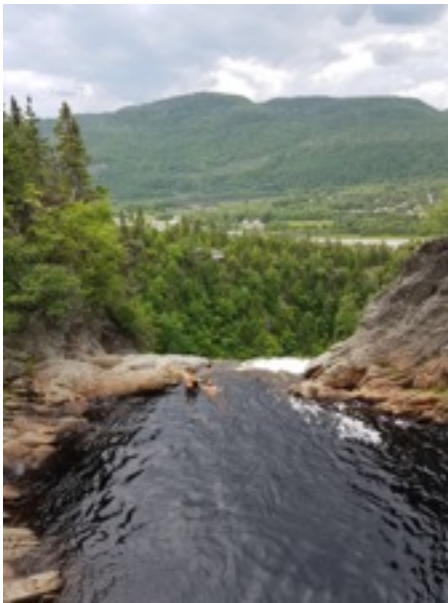
Skidooing



Boat Tour, Norris Point











Why Western?



Marble Mountain - Steady Brook
Marble Mountain

*A beautiful place to **live and work!***



NEWFOUNDLAND & LABRADOR, CANADA

WWW.MUN.CA




*A beautiful place to **live and work!***



NEWFOUNDLAND & LABRADOR, CANADA

WWW.MUN.CA



J.T. Cheeseman Beach - Port aux Basques

Mike Clewer

*A beautiful place to **live and work!***



NEWFOUNDLAND & LABRADOR, CANADA

WWW.MUN.CA



Four
seasons!



Why our Residents Chose Western...



Why Western?



Being a Corner Brook native, I was familiar with all of the amazing things that the West Coast of Newfoundland has to offer. There is such a great sense of community in Corner Brook, both between the residents and in the community as a whole. That sense of community paired with all of the great activities available in Corner Brook create a fantastic lifestyle.

From a medicine point of view, Corner Brook offers the positives of a rural residency program, while also integrating some of the benefits of a more urban program. The small number of residents spread across Western Newfoundland means that there is an abundance of one-on-one learning with preceptors and the ability to take on a high level of responsibility for your patients. Because Corner Brook is a healthcare hub in Western Newfoundland there is also a high volume of patients and numerous specialists who are eager to take on resident learners. Additionally, medical students rotate through the region regularly, which can offer great opportunities to engage in medical education. Overall, the WestFam program offers a supportive, enriching, and rewarding family medicine residency program!

- Tyler Brown, Western Stream Resident, 2019-2021

Family Practice Opportunity - Corner Brook

A well-balanced, well-disciplined Family Practice, situated in picturesque Corner Brook, Newfoundland, is a golden gem and ready to be taken over by an ambitious medical doctor. The city of 20,000 also serves a catch basin of an additional 41,800. Most physicians live within six minutes of both office and hospital! (Bed capacity is 217.) Available are ER/OPD, OR, In-patients and extended care privileges as desired. Communication and camaraderie abound. Corner Brook boasts not only of our Marble Mountain downhill slopes and Blow Me Down cross country ski trails, but also of the Triathlon, multiple water sports and berry picking. Not to be forgotten is Memorial University's Grenfell Campus and its new observatory. Its School of Fine Arts enables one to travel the province experiencing wonderful dinner theatre and rich art. Our children are busy. Recreation facilities are numerous and welcoming. A closely knit community, Corner Brook is friendly and family orientated. We SMILE all year! Interested physicians should phone [709-639-9449](tel:7096399449) for more information about this practice opportunity.



Exciting Family Medicine Opportunities.....



**Health and Performance
Medical Centre**





**We look forward to seeing you on the
West Coast!**



For further information please
contact:



Dr. Erin Smallwood
Western Stream Lead

Renee Coughlin
Western Stream APA

709-634-4600

FMWestern@med.mun.ca

