

MUN Internal Medicine

Introducing Competency By Design: Newsletter 12



Countdown to CBD

Competency based medical education is coming to Memorial Internal Medicine... and it's right around the corner!

JULY 1st

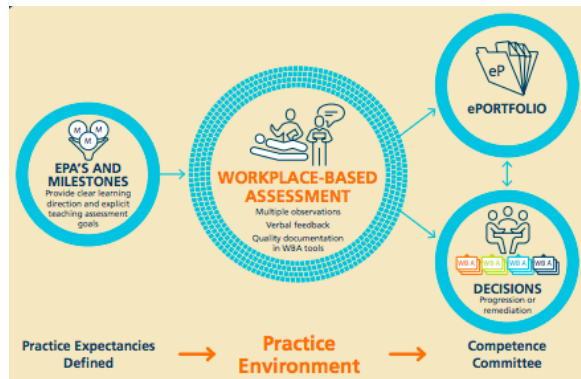
The incoming residents (12 PGY1s) will be the first group to officially use a competency based medical education system for training.

As the academic year starts it is important for staff and residents both to be engaged!

What are the expectations during CMBE training?

Learning Contracts (1/block):

- At the start of each block, residents and staff will meet to fill out learning contracts that identify key goals for the rotation.
- At the midway point or end of the block they meet again to identify whether the goals have been attained



EPAs (at least 2/week)

- EPAs provide a method of frequent, low stakes assessment
- You assess the resident on one particular task at one particular point in time
- Residents will identify EPAs that they need to accomplish or learn, and staff will assess them in a low risk method



MUNCAT APP

- Residents have the MUNCAT app on their phones, which is all you need to do an EPA
- If you don't know your PIN yet, it will be emailed to you after you do your first EPA with a resident

Competency Committees:

- A competency committee is responsible for reviewing the EPAs accomplished and determining the residents' progress
- No individual EPA will change the progression of a resident - you are not "passing" or "failing" them
- The competency committee reviews the global progress of a resident to determine progression and areas to focus on

Academic Advisor:

- Each resident will have an academic advisor to help keep them on track