



**Labrador Institute**

Annual  
Report

2008

---

**Table of Contents**

Message from the Director ..... 3

Guiding Our Actions ..... 4

    Overview ..... 4

    Mission and Mandate ..... 5

Accomplishing Our Mission..... 6

    Collaboration..... 6

    Outreach ..... 7

        Environmental..... 7

        The Arts ..... 8

        Business and the Economy ..... 9

    Research..... 10

        Internal Projects..... 10

        External Projects ..... 11

    Education ..... 12

Staffing ..... 13

    Keith Chaulk ..... 14

    Ron Sparkes..... 14

    Martha MacDonald ..... 15

    Beatrice Dickens ..... 15

    Jennifer Butler..... 16

    Derek Wilton ..... 16

Labrador Institute Advisory Board (LIAB) ..... 17

Valued Partners..... 17

    Memorial..... 17

    External ..... 17

Appendix A..... 19

## Message from the Director

I have just finished my first year with the Labrador Institute, and it has been a busy and exciting time. Over the last year I have made many new friends and I look forward to expanding the Institute's network of supporters over the coming months.

Labrador is an interesting place to work, and live. Its natural beauty is second to none. Many people do not know that Labrador is larger than the rest of Atlantic Canada combined. It is home to some of the largest economic initiatives in the province, as well as to a diverse group of people, each with their own cultural identity and individual aspirations. From my discussions with people throughout the region, I can honestly say there is a genuine desire to see more University programming in Labrador. People want to see a larger University presence and as the Provincial University, I believe Memorial has an obligation to become more active in this often neglected region.

But not all is gloom and doom. In the last year Memorial has made significant efforts to increase its programming in Labrador. The Faculty of Arts has been extremely responsive to the needs of the region and is actively working with the Institute to develop relevant education initiatives. Given enough time, and adequate support, we feel that University programming has a bright future in Labrador. I would also like to point out that many other Units, Departments and Divisions at Memorial have likewise been extremely innovative in their programming in Labrador and I can sincerely say that my dealings with the Senior Executive, Deans, Directors and Department Heads has been extremely positive.

With time, the Institute's network of partners will grow and as it does so too will our ability to deliver meaningful programming in Labrador.

I want to say thanks to all of those people who have supported the Institute staff in the past year, including the Labrador Institute Advisory Board, and our friends at the College of the North Atlantic. I believe we have a bright future ahead of us and I look forward to continued support from the main campus and our external partners.

In the attached report you will see highlighted many of the initiatives, partnerships and friendships we have forged in the last year.

Wishing you all the best in 2009.



Keith Chaulk, PhD  
Director, Labrador Institute  
Memorial University of Newfoundland

## Guiding Our Actions

### Overview

The Labrador Institute was established by Memorial University to stimulate, coordinate, and support major University projects and programs designed to promote the well-being of the people of Labrador and to expand the Labrador knowledge base.

Memorial University has had a formal presence in Labrador since the 1970s, when field workers carried out extension services in Cartwright and Nain. In the late 1970s, the University established the Labrador Institute of Northern Studies to promote community development, extension services and socio-economic research, and to provide a link with the campus in St. John's.

In 1997, the university changed the focus of the Institute's activities and renamed it the Labrador Institute of Memorial University. As of today, the Institute has a permanent staff of six people with two positions currently vacant and in the process of being staffed.



Labrador West Campus

There are currently two offices of the Labrador Institute, one located in Happy Valley-Goose Bay and the other in Labrador City. Both offices are co-located with the College of the North Atlantic. This co-location is unique, these two campuses being the only such co-location of College and University in the province.



Happy Valley-Goose Bay Campus

The planning and initiatives of the Labrador Institute over the past year have been guided by the LI mission and mandate, the Labrador Post Secondary Needs Assessment, and in particular Goal 15 (Education and Research opportunities in Labrador) of Memorial's 2007 Strategic Plan, with Goals 14 (Foster Regional and Rural Development) and 16 (Partnership with Aboriginal Peoples) also being addressed in our actions. Other important reference points include: (a) the Provincial Northern Strategic Plan, (b) the White Paper on Postsecondary Education, and (c) Memorial's Aboriginal Initiatives Task Force.

## Mission and Mandate

In July 2008, Memorial's Board of Regents approved a revised mission and mandate for the Labrador Institute. It is the mission of the Labrador Institute to bring the needs and interests of Labradorians to the university, and to facilitate actions that will bring the capacities of the university to bear on these needs and interests. This mission will be accomplished through the following *CORE* strategies:



Source: LI Photo Collection

**Collaboration:** The Labrador Institute will work in collaboration with the College of the North Atlantic in the fulfillment of all elements of this mandate and as further agreed upon in the co-location agreement.

**Outreach:** The Labrador Institute will be involved in initiatives that: (a) preserve and promote Labrador history, culture, and languages, (b) advance lifelong learning for Labradorians, and (c) further the economic and social development of the region.

**Research:** The Institute will: (a) serve as the initial point of contact for all research conducted by Memorial faculty in Labrador, (b) identify opportunities for research, including those proposed by the Labrador community, (c) assist researchers in engaging Labradorians in the planning and implementation of research, (d) carry out research projects in accordance with the expertise of LI staff, (e) co-ordinate and facilitate the process of communicating research results to the community, and (f) establish a repository of Labrador research data and outputs.

**Education:** The Institute will: (a) help create and manage the delivery of programs appropriate to the needs and interests of Labradorians, (b) assist Labradorians in gaining access to existing programs in the university, and (c) actively recruit students and provide appropriate advisory services for Labradorians interested in attending university.

## Accomplishing Our Mission

Our mission is achieved through the strategies of Collaboration, Outreach, Research and Education (CORE). The Labrador Institute Project Inventory (Appendix A) designates a primary CORE strategy for each project activity; however, it is recognized that many activities warrant categorization in more than one of the CORE designations.

### Collaboration

In 1998, the LI and the Happy Valley-Goose Bay campus of CNA entered into discussions aimed at a formal co-location arrangement. In February 2003, the Presidents of Memorial University and the College of the North Atlantic signed a Memorandum of Understanding aimed at advancing the presence of, and accessibility to, the institutions in Labrador.

Government's 2005 White Paper on Postsecondary Education noted the need for increased collaboration between Memorial and the College across the province. The Paper cited the progress being made by the Labrador Institute and the College campuses in Labrador where efforts had led to the 2003 MOU and the development of specific program agreements. This collaboration was recognized when government funded a new wing at the Happy Valley-Goose Bay campus of the College, and in September 2008 the Labrador Institute completed its physical move to new and shared facilities. The physical co-location was formalized by the signing of a co-location document in June 2008. Efforts are now underway aimed at developing a more formal co-location agreement at the new College campus to be constructed in Labrador West.

Co-location enables the partnering institutions to share designated facilities and services that result in increased cost efficiency for both. With the assistance and support of the College and Memorial's Queen Elizabeth II Library, the Labrador Institute Library and resource material collection is now housed in a new College-Labrador Institute Library that enables greater ease of access for the general public.

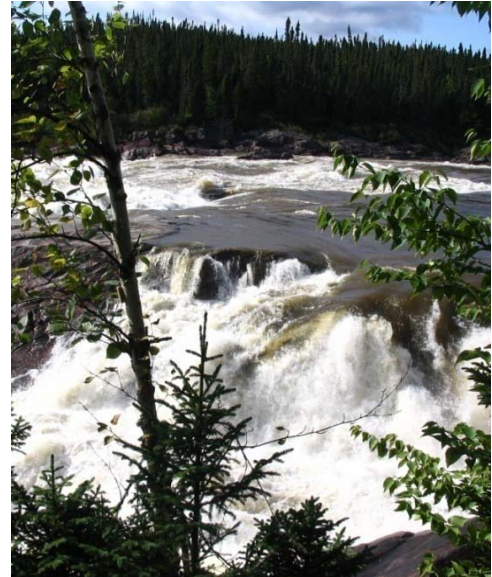
Throughout this report, there are many specific references to collaboration and partnering in the CORE areas of outreach, research and education. Collaboration within Memorial is particularly important to the achievement of the LI mission and the Director has devoted considerable time to strategy sessions with Deans, Directors, Department Heads and selected faculty members at the St. John's campus and Sir Wilfred Grenfell College. Other Canadian universities are engaged with Labrador organizations in research and the delivery of educational programs, and the Labrador Institute provides support within its means to these external partners; most specifically, those working with the Government of Nunatsiavut, the Innu Nation and the Labrador Metis Nation on the broad, and often highly specific needs that are best served through collaboration with several postsecondary service institutions.

## Outreach

Outreach activities are most often achieved in concert with LI's valued internal and external partners. This is consistent with the broad mandate of identifying regional needs and bringing the capacities of the University to bear in meeting needs and interests.

### Environmental

The environment is critically important to Labradorians and is an area where the Institute draws on Memorial's resources to address a broad range of environmental interests. The 2008 Climate Change Conference in North West River was a collaborative effort of the Department of Geography, the Harris Centre and the Labrador Institute. The event enabled a meaningful exchange of information and informed inquiry among participating scientists, researchers, and community members who engaged in dialogue, and shared information gleaned from their respective experiences. Recently, Memorial's Dean of Science invited the Director of the Labrador Institute to sit on the Dialogue on Advancing Global Sustainability (DAGS) panel which will have presentations made available in Labrador. Through its participation on the Steering Committee for the Social Economy Research Network of Northern Canada (SERNNNoCa) the Institute supported funding for a study of the impact of mining on northern communities, a topic of current interest given Labrador's mining history and the region's potential for new mines.



Muskrat Falls

Source: Beatrice Dickers, 2008



Caribou

Source: Beatrice Dickers, 2007

## The Arts

Labrador is alive with varied interests in the arts and the Labrador Institute has long contributed to arts initiatives in Labrador communities, the most notable being the Labrador Creative Arts Festival, the Labrador West Music Festival and the Lake Melville Music Festival.

In 2008, the horizon of outreach was broadened in cooperation with key partners. With the assistance of the Department of English, Dr. Ron Rompkey's lecture on the Grenfell Mission was brought to Labrador through a live and interactive video session. Noted author, Michael Crummey's visit to Labrador was a joint effort of the Faculty of Arts and the Labrador Institute that featured community engagement through public readings and school and library visitations. LI is also engaged on an Intangible Cultural Heritage initiative with the Labrador Metis Nation and the Labrador Friendship Centre. The arts highlight of the year was the School of Music's Brass Band tour of the Labrador coast and a concert at the Labrador Interpretation Centre in North West River. Beyond the arts, LI has identified varsity sports as an innovative recruitment tool and motivational means of bringing knowledge into the community. With the support of the School of Human Kinetics, varsity athletics, experiential development, the Aboriginal Sports Circle of Newfoundland and Labrador, and the Nunatsiavut Government, several varsity athletes visited Makkovik in the winter of 2009, delivering sports clinics, and acting as ambassadors for Memorial University.



Queen of Peace Middle School Production  
Source: LI Website



## **Business and the Economy**

Outreach to support and develop business capacity and economic development is an expectation government has of its university, and the Labrador Institute works with several university and external partners to achieve this aim. Co-operative education is at the forefront of experiential learning at Memorial, and the Labrador Institute is partnering with the Division of Co-operative Education to promote Labrador work term placements with regional businesses, agencies and governments. The co-op experience fuses professional academic knowledge with practical experience in the workplace and provides reciprocal benefits to the student and the placement host. LI is working with the Dean of the School of Business to create a think tank that Aboriginal groups/government can access to discuss business opportunities in Labrador. This concept comes in response to comments made by Aboriginal leaders when they met with Drs. Eddy Campbell and Keith Chaulk during Expo Labrador 2008. The annual Expo Labrador event is supported by the Institute through an LI/ Memorial booth at the Expo trade show; concomitantly, LI staff contribute to and participate in the Expo conference event. The Office of the President, the Faculty of Engineering and Applied Science, and the Marine Institute have been regular and active participants at Expo Labrador events.

The provincial mandate of the Harris Centre presents many opportunities for partnering with the Labrador Institute on regional matters and provincial initiatives that impact this region. LI has worked with the HC on the planning and delivery of “Memorial Presents” and Regional Workshops in the Labrador Straits, Labrador West and the Upper Lake Melville regions. Follow up on the workshops included a special October 2008 Labrador Oil and Gas Benefits Seminar delivered in Upper Lake Melville.

Other institutional outreach initiatives have focused on long term planning. The Centre for Institutional Analysis and Planning led consultations in Labrador regarding the development of Memorial’s Strategic Plan; the sessions were held in Labrador West and Happy Valley-Goose Bay. The Office of the Vice-President (Academic) worked with LI to prepare and submit an application which was successful in having Memorial granted membership in the University of the Arctic. A Labrador Postsecondary Needs Assessment was commissioned by the Office of the Vice President (Academic) and recommendations from this study continue to guide university actions in Labrador. Most recently, Memorial has established an Aboriginal Initiatives Task Force to promote opportunities for Aboriginal students to succeed at Memorial University. Significant in terms of outreach are the achievements of obtaining Memorial e-mail addresses for LI staff, the total redevelopment of the Labrador Institute webpage, and map recognition of Labrador campus sites on the main Memorial webpage.

## Research

The Labrador Institute is frequently the initial point of contact for many researchers interested in working in Labrador. These consultations provide LI the opportunity to identify research opportunities proposed by the Labrador community as well as assist researchers in engaging Labradorians in the planning and implementation of research.

## Internal Projects

LI staff have been active participants in leading and participating in research projects and initiatives.

Associate Director (Education and Training), Martha MacDonald, is participating in a CURA project entitled *Canadians and their Past*, which includes historical research in Labrador. In addition, Ms. MacDonald and Dr. Hans Rollmann earlier completed a research project on Moravian education and literacy in Labrador.



Moravian Mission, Hopedale  
Source: LI Photo Collection

Dr. Keith Chaulk, Director of the Labrador Institute, continues his biological research on birds, mammals, and the ecology and environment of Northern Labrador.

Institute staff also serve on the Northern Scientific Review Program (NSTP) Review Committee, the Steering Committee for the Social Economy Research Network of Northern Canada, the Harris Centre Applied Research Fund Review Committee, and the Labrador Advisory Committee to the Atlantic Aboriginal Health Research Program. LI, along with the Office of the Vice-President (Academic), represent Memorial at the University of the Arctic which has research initiatives throughout the circumpolar world. LI also represents Memorial at the Association of Canadian Universities for Northern Studies which has a comprehensive network related to northern research

This past year LI hosted three PhD candidates in Anthropology who are working with the Innu and Inuit of Labrador, as well as one PhD candidate in Archaeology. This represents new research programming at the Institute and is an exciting opportunity for LI, Labrador and the University.

In 2008, Candidates for the Faculty of Arts Canada Research Chair in Aboriginal Studies travelled to Labrador and made public presentations in the region as part of the selection process. Those participating in the sessions were provided the opportunity to offer feedback to the selection

committee. Labrador Institute staff provided logistical services and coordination with Aboriginal groups for these sessions.

In conjunction with the Faculty of Medicine, LI will host a permanent tenure track position of Assistant Professor of Community Health expected to start sometime in the fall of 2009. This position will be heavily focused on health related research.

Along with the Faculty of Arts, the Labrador Institute will also host a Post-doctoral Fellow in the Social Sciences and Humanities starting September 2009.

### **External Projects**

LI supports several external research projects. Recently, several high profile international projects have come to the fore including: “A Comparison of Informal Networks in Two Labrador Communities”, led by Dr. Kirk Dumbrowski (CUNY, John Jacobs College), which will focus on Inuit health, the economy, employment, housing and food security.

LI is also supporting Dr. Astrid Ogilvie (University of Colorado) in her project entitled “Syntheses of Sea Ice, Climate and Human Systems in the Arctic and Subarctic (SYNICE)” and will include a significant component in Labrador with emphasis on research of relevance to the Labrador Inuit.



Source: LI Photo Collection

Moreover, LI is supporting a project led by Dr. Michael Ungar of Dalhousie University. The project is multi-disciplinary and multi-institutional and is entitled “Pathways to Resilience: A Mixed-Method Investigation of the Negotiations for Health Resources among At-Risk Children and their Families who Experience Concurrent Child Welfare, Mental Health, Correctional and Educational Services”. The “Nunatsiavut Harvest Study”, funded by the Nunatsiavut Government and led by Memorial’s Dr. Larry Felt and former MUN Canada Research Chair in Aboriginal Studies, Dr. David Natcher, is also supported by the Labrador Institute.

LI was successful in accessing funds from IPY to conduct research on Labrador culture and heritage. Phase One (research) has been completed. Phase Two is well underway and will see LI staff use this research to write a children’s book that will be used in the Labrador school system. In addition, LI was successful in receiving IPY funding to redevelop existing College of the North Atlantic infrastructure to provide office space in support of Northern Research in Labrador. It should be noted that the Canada Research Chair in Aboriginal Studies is preparing a CFI grant proposal which will include a sizeable component for infrastructure that will be donated to the Labrador Institute.

## Education

The Labrador Institute works closely with Memorial Faculties, Schools, the College of the North Atlantic and other external partners to help create and manage the delivery of educational programs appropriate to the needs of Labradorians. In addition to providing assistance with access to existing programs at Memorial, the Labrador Institute is responding to the regional request for the delivery of more credit courses in the region.

LI is encouraged by the progress made in the delivery of Labrador based courses. Over the past three years, arrangements have been made for the delivery of the following intersession courses in Happy Valley- Goose Bay:

Linguistics 2025-26 Inuktitut I & II  
 Linguistics 2060-Aboriginal Languages of North America  
 English 3350 in Labrador (Jamie Skidmore: Introduction to Acting)  
 English 2160: North American Aboriginal Literature

In addition, Martha MacDonald has taught the following courses in the Comprehensive Arts and Science Transfer Program at the College of the North Atlantic:

Folklore: Introduction to Folklore  
 Folklore: Folklife Studies

In the first year, five students completed a linguistics course; by the third year there were three courses delivered with more than twenty students. There is a definite need for offerings above the 1000 level since students are comfortable in the college environment and prefer remaining in Labrador to complete as much of their educational experience as possible.

To this end, LI continues to consult with various faculties to explore ways of expanding intersession course offerings in Labrador, while fastidiously laying the ground work for upcoming initiatives. In conjunction with the Faculty of Arts, LI is proposing to develop a Diploma in Northern Studies that would have more 2nd and 3rd year courses offered in Labrador using a blend of distance and in person instruction. The Institute is actively exploring ways to list University of the Arctic core curriculum in the MUN calendar. LI collaborated with the Division of Life Long Learning to arrange November 2008 meetings in Labrador to explore opportunities for professional development and continuing education, and plans to repeat the process with Distance Education and Learning Technologies and the Gardiner Centre.

Labrador Institute staff participated in the development and planning of the Integrated Nursing Access Program in cooperation with the School of Nursing, the Faculty of Medicine, Sir Wilfred Grenfell College, Western Regional School of Nursing and the Nunatsiavut Government. Staff also collaborated with the Gardner Institute/Centre for Management Development to identify custom designed professional development courses for delivery in Labrador.

The Labrador Institute has responded directly to specific recommendations of the Labrador Postsecondary Needs Assessment, however, many of the recommendations relate to matters that fall

more directly to other divisions of Memorial or agencies involved with the delivery of secondary school programming. Within Memorial, the Faculty of Education has the greatest influence over secondary school programming, including the areas of teacher education, and research into best practices for educational delivery. A steering committee has been struck to shape a revised Teacher Education Program in Labrador (TEPL) for the Nunatsiavut Government. Committee representation includes the NL Department of Education, the Labrador School Board, College of the North Atlantic, Memorial Faculty of Education, and the Labrador Institute. At the April 2008 Committee meeting, the Nunatsiavut Government committed to the recruitment of a coordinator for the development project and the launch of a needs assessment among beneficiaries to determine the number of people interested in accessing a revised TEPL program.

## Staffing

Significant progress has been made in the selection and realignment of staff at the Labrador Institute over the past fifteen months. The appointment of the Director, Dr. Keith Chaulk, in November 2007 was followed by the designation of a Coordinator of Research, Dr. Derek Wilton in February 2008, and the selection of Martha MacDonald as the Associate Director (Education and Training) in October 2008. The position of Program Coordinator was filled in April 2009 by Jennifer Butler. The Program Coordinator will provide vital technical support which will help to increase research and outreach opportunities for the Institute. The position of Labrador Associate will be realigned through a partitioning to enable the recruitment of a full-time researcher and continue the current Associate role on a part-time basis. LI is in the process of re-tasking the manager position at the Labrador West Office to a pan-Labrador role focusing on alumni affairs, student recruitment and student services, working in consultation with the relevant divisions of Memorial. In addition, LI has expanded its staff in part-time, flexible, and temporary ways with the employment of summer students who assisted with increasing access to LI's vast photo collection and website improvement. A visiting PhD candidate, Mark Turner, digitized much of LI's film collection and provided metadata for it. The staff expansion includes the co-location of three graduate students who are working closely with the Institute. These researchers are being recruited to teach courses in intersession and to give guest lectures in classes at the College. The engagement of graduate students expands the base of Labrador research while increasing opportunities to deliver courses as opportunities arise. The Institute also welcomed participants from the Katimavik program who volunteered in the film library, and who took advantage of the opportunity to audit courses offered at the Institute.

## Keith Chaulk

Keith was born and raised in North West River, Labrador and graduated from Lake Melville School in 1987. He obtained his B.Sc. from Dalhousie, M.Sc. from Acadia, and PhD from Memorial.

Keith has worked in both the private and public sectors. Prior to joining the Labrador Institute Keith worked with Environment Canada, and prior to that with the Labrador Inuit Association. Keith enjoys the outdoors and is especially fond of music and sports.



## Ron Sparkes

Dr. Ron Sparkes has been involved with education and special projects in Newfoundland and Labrador for the past 40 years serving as President of the College of the North Atlantic, President of the Labrador College, and Superintendent of Education with the Labrador East Integrated School Board.

He was Federal Facilitator for the establishment of an Environmental Institute to Monitor Low Level Flight Training in Labrador and Quebec, and Co-Chaired Government's 1999-2000 Panel on Educational Delivery. In 2002 he completed a two-year secondment to the Government of Newfoundland and Labrador as Deputy Minister of Labrador and Aboriginal Affairs and now serves as Labrador Associate with the Labrador Institute of Memorial University.



## Martha MacDonald

Martha MacDonald has lived in Labrador since 1988. She is the Associate Director (Education and Training), she has been employed with LI since 1999, and also teaches Folklore in the college-university transfer year at the College of the North Atlantic.

Martha studied at Mount Allison University, Universite de Strasbourg and Memorial. She volunteers in the arts community of Happy Valley-Goose Bay and has a long-term interest in Labrador culture and history.



## Beatrice Dickers

Beatrice started working with the Labrador Institute on a four-month contract in 1981. During the 27 years, she worked as a secretary and administrative staff specialist. Throughout her employment she met many interesting people through the Labrador Institute and the St. John's campus.

In her spare time, Beatrice is an avid photographer and has taken some of the landscape shots that appear on the Labrador Institute web site.

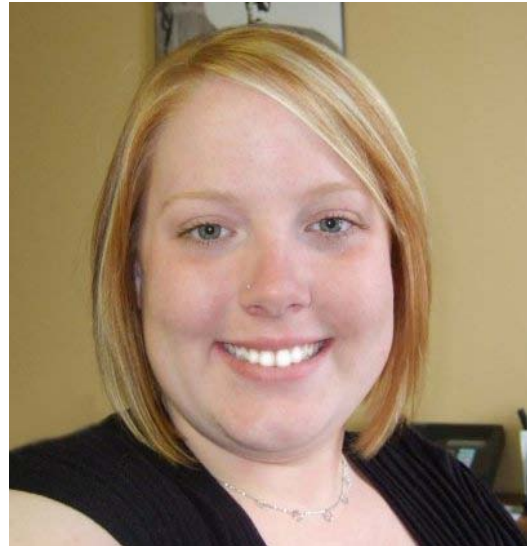


## Jennifer Butler

Jennifer Butler was born in Corner Brook, Newfoundland, and graduated from Pasadena Academy in 2001.

Jennifer is a Memorial graduate having completed her B.A. in Social/Cultural Studies at Sir Wilfred Grenfell College in 2005. She received her M.A. from the University of Windsor in 2007. In January 2008, Jennifer moved to Happy Valley-Goose Bay with her partner, Corey.

Prior to joining the LI team, Jennifer was the Research Manager with the Labrador Metis Nation. Jennifer volunteers with the Canadian Cancer Society and enjoys quilting, cooking, and spending time with her family and friends.



## Derek Wilton

Professor Derek H.C. Wilton, Ph.D., P.Geo. has been a faculty member in the Department of Earth Sciences since 1983. He is a St. John's native and received his B.Sc. from MUN, his M.Sc. from the University of British Columbia, and his Ph.D from MUN. He has been conducting research since 1984 in Labrador from Cape Chidley to southern Labrador. He has sailed the northern Labrador coast, north of Nain, five times, up to circum-navigating Killiniq Island (once); his most recent expedition was the subject of a Nature of Things episode of the Geologic Journey series. He has been involved with research groups/companies/government surveys that have documented a wide variety of geological occurrences throughout Labrador, including geochemistry on archaeological specimens of Ramah chert. In November-December, 2006, he spent six weeks visiting nineteen Labrador communities with high schools; he talked to the students about the geology of Labrador and careers in the mineral industry and at night held public meetings to discuss research. He received the Education

Award from the Professional Engineers and Geoscientists of Newfoundland and Labrador for outstanding contributions to Geoscience Education in 2004 and was awarded the W.H.Gross Medal by the Mineral Deposits Division of the Geological Association of Canada in 1991.





## Labrador Institute Advisory Board (LIAB)

The Labrador Institute has a volunteer board known as the Labrador Institute Advisory Board (LIAB). The group is comprised of representatives from various Aboriginal and community groups, as well as different geographic zones. Currently, the LIAB has twelve members: Lucy Brennan, Cora Edmunds, Darrell O'Brien, Geoffrey Rayner-Canham, Richard Sawyer, Winnie Montague, Jamie Snook (Chair), Bryn Wood, Roxanne Notley, Kanani Penashue; Grant Gardner and Keith Chaulk sit ex-officio.

## Valued Partners

The Labrador Institute is charged with the responsibility of bringing the considerable capacity of the university to bear on the needs and interests of Labradorians and the region. Significant progress has been made in identifying and communicating needs, priorities, and opportunities, and many Faculties, Schools, and Departments within the university have enthusiastically partnered with the Labrador Institute on the wide range of projects documented in this report. In the context of Memorial University, the Labrador Institute is modest in staff size and financial resources, but mammoth in terms of its scope of responsibility; thus the importance of Memorial partners working in concert with the Labrador Institute in the achievement of its mission and in meeting the Labrador focused goals identified in Memorial's Strategic Plan. Effective partnering is dependent on the constructs of willingness and ability, and LI is encouraged by the increasing willingness of its Memorial partners; however, it must be recognized that ability depends in large measure on funding to support initiatives in a region where costs are high. The Labrador Institute recognizes the following Memorial partners, government, agency, and community organizations for the support afforded LI over the past year(s):

### Memorial

Faculty of Arts  
 School of Music  
 School of Human Kinetics and Recreation  
 Division of Lifelong Learning  
 Faculty of Education  
 School of Nursing  
 Office of Research  
 Harris Centre  
 Faculty of Medicine

Faculty of Engineering and Applied Science  
 Faculty of Business Administration  
 Faculty of Science  
 Sir Wilfred Grenfell College  
 School of Business  
 Co-op Studies  
 Newfoundland Quarterly  
 Newfoundland and Labrador Studies

### External

College of the North Atlantic  
 Marine Institute  
 Nunatsiavut Government  
 Innu Nation  
 Labrador Metis Nation  
 International Polar Year

Labrador North Chamber of Commerce  
 Labrador West Chamber of Commerce  
 Department of Labrador and Aboriginal Affairs  
 Rural Secretariat  
 Atlantic Aboriginal Health Research Program  
 Labrador Interpretation Centre

Labrador Heritage Society  
Katimavik  
Institute for Environmental Monitoring and  
Research  
University of the Arctic  
Dalhousie University  
Central Labrador Economic Development Board

Labrador Friendship Centre  
Hyron Regional Economic Development  
Corporation  
Southeastern Aurora Development Corporation  
Labrador Straits Development Corporation  
Gorsebrook Institute, St. Mary's University  
Labrador School Board

## Appendix A

### Labrador Institute Project Inventory

#### Program Codes

C = collaboration

O = outreach

R = research

E = education

I = internal

Project Title	Role	Status	Program
AAHRP Research Questions Brochure (needs logo)	Partner	Completed	C, R
Association of Cultural Industries (resigned Sept 08)	Board	Completed	C
Big Land Challenge Dog Team Race 08	Lead	Completed	C, O
Big Land Challenge Dog Team Race 09	Lead	Completed	C, O
BR& E Leadership Team	Other	Completed	O, E
Business: CCMD Learning Tour 08	Partner	Completed	C
Business: EXPO Labrador 08	Partner	Completed	C, O
Business: Northern Lights Business Conference (Montreal 10)	Partner	Completed	C, O
Business: Northern Lights Business Conference (Ottawa 08)	Partner	Completed	C, O
Business: Oil and Gas Seminars (HC) 08	Partner	Completed	C,O
Business: South Eastern Labrador Highway Economic Opportunities	Partner	Completed	C, R
Business: Transportation Forum	Other	Completed	C,O
Canadian Index of Well-Being (CIW) ...report....	Other	Completed	C
IPY Interim Regional Coordinating Office (owe reports)	Lead	Completed	C, O, R
Katimavik Film	Lead	Completed	R, E
Labrador Creative Arts Festival 07	Partner	Completed	C, O, E
Labrador Creative Arts Festival 08	Partner	Completed	C, O, E
Labrador Heritage Fair 09	Other	Completed	C, O
Labrador Heritage Fairs	Other	Completed	C, O
Labrador School Board: Board Members (resigned Oct 17/08)	Board	Completed	C, E
Labrador West HyRon Education Sub Committee (resigned)	Partner	Completed	C, O, E
Labrador West HyRon Industrial Relations Committee (resigned)	Other	Completed	C, O, E
Labrador West Interviews: Reeta Tremblay's Research	Partner	Completed	C,O,R,E
Labrador West Music Conservatory (Oct 08)	Lead	Completed	C, O, E
Labrador West Music Festival 08	Lead	Completed	C, O, E
Lake Melville Music Festival 08	Partner	Completed	C, O, E
LI Budget planning and tracking 07/08	Lead	Completed	I

LI College Folklore Course 07/08	Lead	Completed	E
LI College Folklore course 08/08	Lead	Completed	E
LI College Folklore course 08/09	Lead	Completed	E
LI College Folklore course 09/09	Lead	Completed	E
LI College Labrador Society and Culture 08/08	Partner	Completed	O, E
LI Co-location Agreement HV-GB	Partner	Completed	C
LI Data Archives (NSB), Filing	Lead	Completed	I
LI Mission, Mandate Document	Lead	Completed	I
LI Staffing Action (Associate Director)	Lead	Completed	I
LI Training in Oral History (LMN)	Lead	Completed	C, R, E
LI Varsity Athletics (Sport Clinics)	Partner	Completed	O, E
MUN Canada Research Chair Aboriginal Studies	Other	Completed	I
MUN Climate Change Conference	Partner	Completed	C, O
MUN Harris Center Presents 08 (Central Labrador)	Partner	Completed	C,O,R,E
MUN Intersession 08	Lead	Completed	E
MUN Music Program North Coast	Partner	Completed	C, O
MUN Visiting Artists Program (Michael Crummey)	Partner	Completed	O
MUN Visiting Speaker (Annis Timpson, University of Edinburgh)	Partner	Completed	O
Musee regional de la cote Nord toponymy project	Other	Completed	C
Nunatsiavut Language Conference-Nain	Observer	Completed	C,O,R,E
Nunatsiavut Torngasok Cultural Centre Report	Other	Completed	C
Them Days Editing	Other	Completed	C
Trevor Bell Climate Research (Carolina T.)	Partner	Completed	C
AAHRP (16 health projects)	Board	Ongoing	C, R, E
Business: Atlantic/Northern/Five Wing Gateway	Partner	Ongoing	C, O
Business: Chamber of Commerce HV-GB and Lab West	Board	Ongoing	I
Business: CLEDB (arts rep, temp. education rep, secretary rep)	Board	Ongoing	C
Business: Highway 380 500 traffic survey	Lead	Ongoing	R
College Residence Procedures	Partner	Ongoing	C
Co-location Agreement Operation Management Group HV-GB	Partner	Ongoing	C
Co-op Education	Partner	Ongoing	C, E
Indicators of Inuit Student Success	Other	Ongoing	C, R, E
IPY Infrastructure Residence	Lead	Ongoing	
IPY LI Children's Book (info collected, translated, artists, transcribed)	Lead	Ongoing	O, E,
Labrador Explorations Symposium Proceedings	Lead	Ongoing	R, E
LI Advisory Board	Lead	Ongoing	I
LI Associate Director Networking	Lead	Ongoing	I
LI Budget planning and tracking 08/09	Lead	Ongoing	I
LI Budget planning and tracking 09/10	Lead	Ongoing	I

LI Director Networking	Lead	Ongoing	I
LI Employee Conferences	Partner	Ongoing	I
LI External Exam Invigilation	Lead	Ongoing	C, O
LI Finances: expense claims, purchasing, accts. payable	Lead	Ongoing	I
LI Library Acquisitions	Lead	Ongoing	C,O,R,E
LI Library Services	Lead	Ongoing	C, O, E
LI Meetings, hosting, mail, scanning, etc., staff support	Lead	Ongoing	I
LI Office admin., enquiries, computers, HR	Lead	Ongoing	I
LI Outreach Editing Services External... diminishing (cash recovery)	Other	Ongoing	O
LI Outreach Editing Services Internal	Other	Ongoing	I
LI Project Planning	Lead	Ongoing	I
LI Training On-line Course in Archival Management Policy	Participant	Ongoing	E
LI Webpage	Lead	Ongoing	O
Life History Projects (Elizabeth Penashue, Mary Adams)	Lead	Ongoing	R, E
MUN Aboriginal Initiatives Task Force	Participant	Ongoing	I
MUN Academic Advising	Partner	Ongoing	O
MUN Canadians and Their Pasts (CURA Project)	Partner	Ongoing	C, R
MUN Harris Centre Applied Research Fund	Committee	Ongoing	R
MUN Harris Centre Nominations Committee	Committee	Ongoing	O
MUN Larry Felt Harvest Survey	Partner	Ongoing	C, R
MUN NSTP Review Committee	Committee	Ongoing	R
MUN Reeta Tremblay's Seminar Series	Partner	Ongoing	C, O, E
MUN Research Inventory (MURI in Labrador)... info request	Partner	Ongoing	I
MUN Student Recruiting	Partner	Ongoing	O
MUN Student Services	Partner	Ongoing	O
MUN Training Presentations (LLL)	Lead	Ongoing	C,O,R,E
MUN University of the Arctic (curriculum approval by Senate)	Partner	Ongoing	C, R, E
Newfoundland and Labrador Studies	Board	Ongoing	C
NF Historical Society	Board	Ongoing	C
NF Quarterly	Board	Ongoing	C, R, E
Other seminars	Partner	Ongoing	C, O, E
Provincial Intangible Cultural Heritage	Committee	Ongoing	C, O, R
Requests for Info (senior exec)	Lead	Ongoing	I
SERNNNoCa	Partner	Ongoing	C, R
Staffing Action Program Coordinators	Lead	Ongoing	I