



SCHOOL OF ARCTIC AND SUBARCTIC STUDIES

LABRADOR INSTITUTE OF MEMORIAL UNIVERSITY

Inaugural Meeting of the Academic Council

February 23rd, 2021



Present:

ASHLEE CUNSOLO (Chair; Dean, School of Arctic and Subarctic Studies)

JODIE LANE (Director of Education, Nunatsiavut Government)

AMY HUDSON (Governance and Strategic Planning Lead, NunatuKavut Community Council)

BUD DAVIS (Assistant Director of Education, Innu Education)

(for Kanani Davis, Director of Administration & Professional Services, Innu Education)

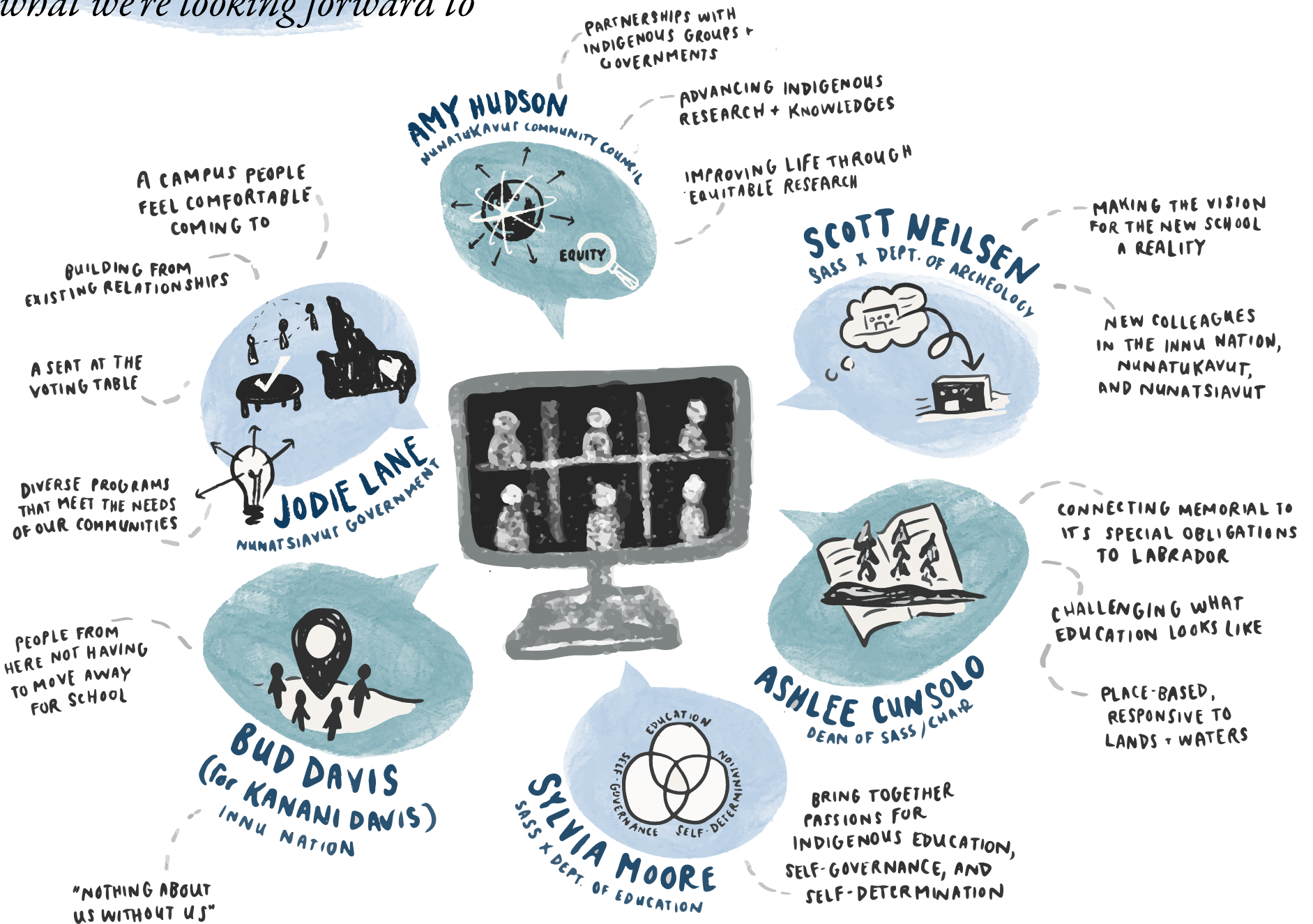
SCOTT NEILSEN (Assistant Professor, School of Arctic and Subarctic Studies & Department of Archeology)

SYLVIA MOORE (Assistant Professor, School of Arctic and Subarctic Studies & Department of Education)

ALEX SAWATZKY (Secretary; Special Projects Manager, Labrador Institute)

WHY WE'RE HERE

and what we're looking forward to



Recognizing who we are as individuals and who we are in relationship...where we come from, what we're bringing in, the relationships we all hold and the relationships that we can strengthen through this work,

FUNCTIONS OF THE ACADEMIC COUNCIL

A ground-breaking Constitution...

FAMILIAR FORMAT,
RADICAL CONTENT...

INCLUDE TRADITIONAL
PLACE NAMES IN THE
PREAMBLE

NORTHERN-LED,
NORTHERN-BASED,
NORTHERN-FOCUSED

LAND ACKNOWLEDGMENT

OBLIGATION TO
UPHOLD UNDRIA
PRINCIPLES

LEADERSHIP IS ABOUT
PARTNERSHIPS +
RELATIONSHIPS

ACADEMIC EXCELLENCE
STEMS FROM RESPECTFUL
RELATIONSHIPS

OPENS UP POSSIBILITIES
FOR OTHER FORMS OF
KNOWLEDGE IN UNIVERSITY

CONSTITUTIONAL
OBLIGATION TO
RELATIONSHIPS
AMONG PEOPLES,
LANDS, + WATERS

...instead of fighting against existing
structures, we are creating something new

Council powers and duties:

FINAL
PACKAGE

RECOMMEND FINAL
PACKAGES TO SENATE

APPROVE:

- ☒ PROGRAMS
+ COURSES
- ☒ REGULATIONS
+ POLICIES
- ☒ ALL ACADEMIC
MATTERS
- ☒ ALL STUDENT
MATTERS

ELECT MEMBERS
TO STANDING
COMMITTEES

RAISE
MATTERS TO
TABLE AT
SENATE

MUST HAVE INDIGENOUS
REPRESENTATION FOR
ANYTHING TO PASS QUORUM:

...ALL THREE
GOVERNMENTS
MUST SIGN
OFF

VOTING PROCEDURES

GIVE MEMBERS A
VOTING PERIOD:

SEND MATERIALS
AFTER MEETING

1-2 WEEKS FOR
REVIEW, FEEDBACK,
AND VOTING

SEND RESULTS
AFTER VOTING
PERIOD

UPDATES

CANADA RESEARCH CHAIR (SSHRC TIER II)



WE'RE THE
FIRST GROUP
TO FORMALLY
REVIEW THIS



IN ARCTIC AND SUBARCTIC PEOPLES AND PLACES



WORD DOC VERSION
WOULD BE HELPFUL
FOR REVIEWING

DESCRIPTION IS
VERY CLEAR!

CANDIDATES SHOULD
BE ALIGNED WITH
RESPONSIBILITIES TO
PEOPLES + PLACES



*We envision this person as a mentor for
students, and as a facilitator of research
and education by and for the North*

ACADEMIC PROGRAMMING

SHORTER-TERM

RESTRUCTURING EXISTING PROGRAMS
TO SUIT CONTEXTS AND PRIORITIES OF
NORTHERN LEARNERS

DIPLOMAS IN:

- NORTHERN PEOPLES,
LANDS, + RESOURCES
- NORTHERN + INDIGENOUS
CHILD + YOUTH CARE
- INDIGENOUS BUSINESS



*Many exciting opportunities for us to
give input on direction and development
of courses, consider how to validate
different types of knowledge, storytelling,
and ways of learning*

MEDIUM-TERM

APPLYING A NORTHERN LENS
TO NEW + EXISTING PROGRAMS

NORTHERN STREAMS OF EXISTING PROGRAMS:

- MASTER'S OF PUBLIC HEALTH
- MASTER'S OF EDUCATION
- FIRST YEAR ENGINEERING

NEW OPPORTUNITIES:

- NORTH-NORTH-NORTH
OPPORTUNITIES WITH NAC
- NEW GRADUATE COURSES
- SUMMER FIELD SCHOOLS

LONGER-TERM

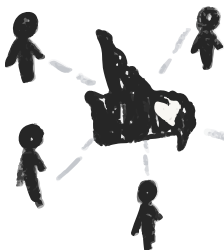
FULL UNDERGRAD,
MASTER'S, AND PHD
PROGRAMS...

...REIMAGINED
BY AND FOR
THE NORTH



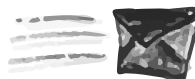
WILL DEVOTE LOTS
OF TIME TO
BRAINSTORMING!

CROSS-APPOINTMENTS + ADJUNCT FACULTY



PEOPLE WHO ARE
CONNECTED TO LABRADOR

? ANYONE ELSE WE
WANT TO INVITE?



WILL COME
UP WITH THE
CRITERIA FOR
ASSESSMENT
AT OUR NEXT
MEETING