



SCHOOL OF ARCTIC AND SUBARCTIC STUDIES

LABRADOR INSTITUTE OF MEMORIAL UNIVERSITY

Meeting of the Academic Council

March 30th, 2021



Present:

ASHLEE CUNSOLO (Chair; Dean, School of Arctic and Subarctic Studies)

AMY HUDSON (Governance and Strategic Planning Lead, NunatuKavut Community Council)

KANANI DAVIS (Chief Executive Officer, Mamu Tshishkutamashutau Innu Education)

SCOTT NEILSEN (Assistant Professor, School of Arctic and Subarctic Studies & Department of Archeology)

SYLVIA MOORE (Assistant Professor, School of Arctic and Subarctic Studies & Department of Education)

ALEX SAWATZKY (Secretary; Special Projects Manager, Labrador Institute)

Regrets:

JODIE LANE (Director of Education, Nunatsiavut Government)

APPROVALS & UPDATES

✓/✗ VISUAL MEETING MINUTES



ENGAGING, INVITING

MAY NEED MORE DETAIL AT TIMES

CAN COMBINE MINUTES TO CREATE LARGER SYNTHESIS



WILL PUBLISH TO LI WEBSITE

✓/✗ LI WEBSITE



CHECK OUT THE "SASS ACADEMIC COUNCIL" SECTION

LET US KNOW WHAT YOU THINK!

SHARE WITH YOUR NETWORKS!

✓/✗ CONSTITUTION

This Constitution is something that Memorial can be proud of. Indigenous leadership comes through in really intentional ways.

NORTHERN-LED,
NORTHERN-BASED,
NORTHERN-FOCUSED
LAND ACKNOWLEDGMENT
OBLIGATION TO UPHOLD UNDRIIP PRINCIPLES

EVERYONE TO REVIEW UPDATED VERSION

(SPECIFICALLY THE "QUORUM" SECTION ON PAGE 6)

! CANADA RESEARCH CHAIR (SSHRC TIER II)



This is the first CRC at Memorial to be created with such high levels of engagement and partnership among rights holders and stakeholders.

IN ARCTIC AND SUBARCTIC PEOPLES AND PLACES

SENT TO INTERNAL CRC COMMITTEE FOR REVIEW,

ONCE APPROVED, CAN START RECRUITMENT

CURRENTLY...

- DESIGN PRINCIPLES DOCUMENT SENT TO FACILITIES MANAGEMENT + INDIGENOUS ARCHITECT

- THEY WILL PUT TOGETHER A CALL FOR SUBMISSIONS OPEN TO INDIGENOUS ARCHITECTS WORLDWIDE

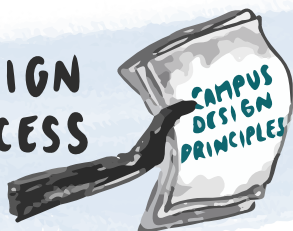
! ASSOCIATE VP (INDIGENOUS RESEARCH)

INTERVIEWS STARTING IN APRIL

A CENTRAL FOCUS OF POSITION WILL BE WORKING WITH LI/SASS

SUCCESSFUL CANDIDATE COULD CHOOSE TO WORK IN LABRADOR

! CAMPUS DESIGN + TENDER PROCESS



- LOOKING FOR TRANSITION SPACE
- WAITING ON PROVINCIAL TENDER ACT APPROVAL

... IN 5-7 YEARS:

- NEW CAMPUS BUILDING

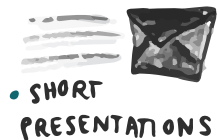
ACADEMIC APPOINTMENTS

Gives us the opportunity to be selective and strategic about who we want to connect with, and how we want to build these relationships.



We will assess each application independently; not all criteria will apply to all individuals.

- WE WILL UPDATE CRITERIA + RECIRCULATE
- WILL INVITE CANDIDATES TO NEXT MEETING (APRIL 29TH)



- SHORT PRESENTATIONS

NON-VOTING MEMBERS
(BUT CAN GRANT VOTING RIGHTS CASE-BY-CASE)

HELP TO GROW RELATIONSHIPS WITHIN + OUTSIDE UNIVERSITY

SERVE AS ADVOCATES FOR LABRADOR

ADD CRITERIA FOR ALIGNMENT WITH/
SUPPORT FOR OUR CONSTITUTION

OPPORTUNITY TO OFFER CULTURAL ORIENTATION ABOUT LABRADOR + SASS

EXPAND MENTORSHIP CRITERIA TO INCLUDE MENTORSHIP OPPORTUNITIES FOR JUNIOR FACULTY + STAFF

- FOR ANYONE UNFAMILIAR

- ESPECIALLY HELPFUL FOR JUNIOR FACULTY

CROSS-APPOINTMENTS

- MEMORIAL FACULTY FROM OTHER DEPTS.

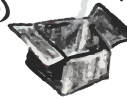
JOINT APPOINTMENTS

- SALARY-SHARED WITH OTHER DEPTS.
- LESS OF A FOCUS NOW
- POTENTIAL OPPORTUNITIES WITH CLUSTER HIRE

ADJUNCT APPOINTMENTS

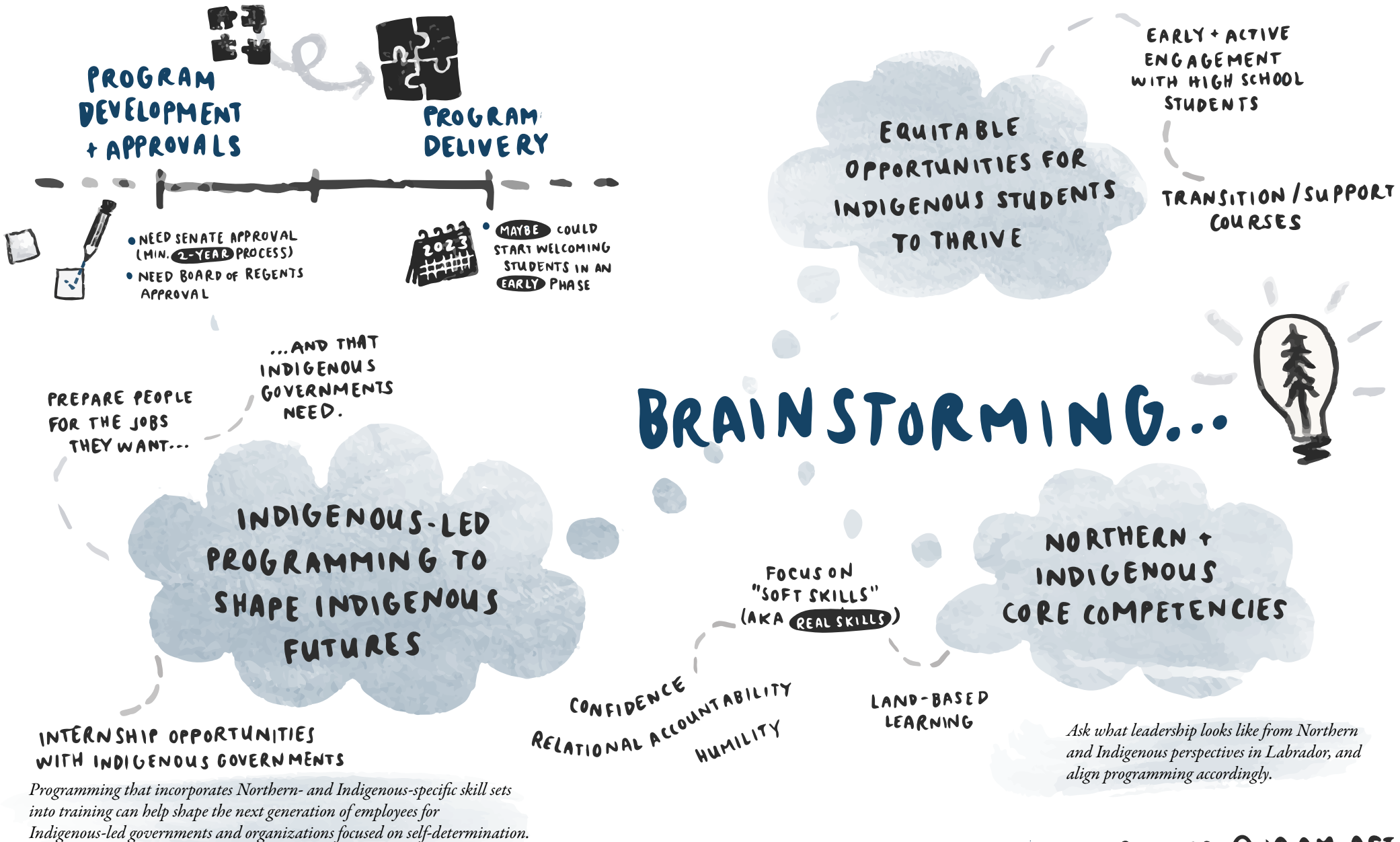
- CAN BE FROM OUTSIDE UNIVERSITY (AND NOT REQUIRED)

OPENS UP POSSIBILITIES FOR OTHER FORMS OF KNOWLEDGE IN UNIVERSITY



CURRICULUM DEVELOPMENT

Planning for an interdisciplinary, Northern-based, Northern-focused undergraduate program



NEXT MEETING: APRIL 29 @ 10 AM AST