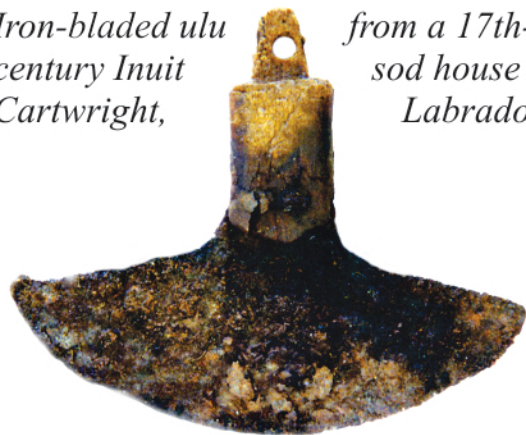


INUIT OF SOUTHERN LABRADOR



Today

Iron-bladed ulu from a 17th-century Inuit sod house near Cartwright, Labrador



1765

Reproduced from an original document held at the United Kingdom Hydrographic Office (www.ukho.gov.uk)

Part of a 1765 map depicting a meeting between Governor Hugh Palliser, aboard his flagship HMS Guernsey, and the Inuit of Chateaux Bay on August 21, 1765. This was part of a month-long proclamation of a Peace and Friendship Treaty between the government of Great Britain and the Inuit of Labrador.



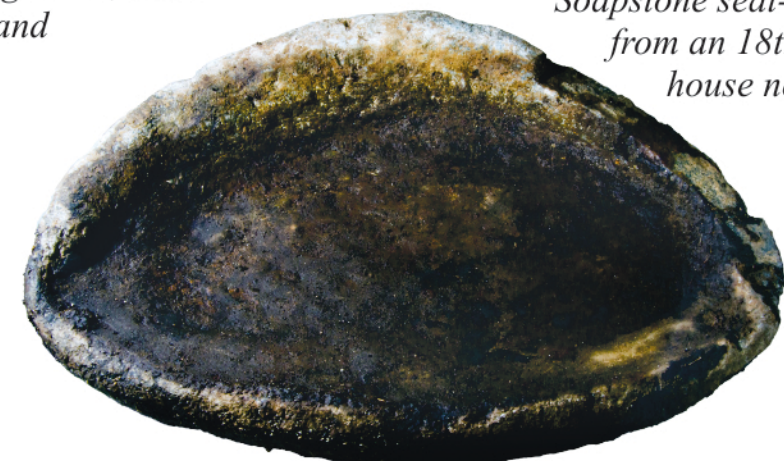
Base of European ceramic vessel recovered from Inuit sod-walled house in St. Michael's Bay



17th-century Inuit sod-walled winter house, excavated by archaeologists near Cartwright, Labrador. Main room at the rear, entrance passage in the foreground.

1500

Soapstone seal-oil lamp, from an 18th-century Inuit house near Cartwright.



We've always been here... This is our home!