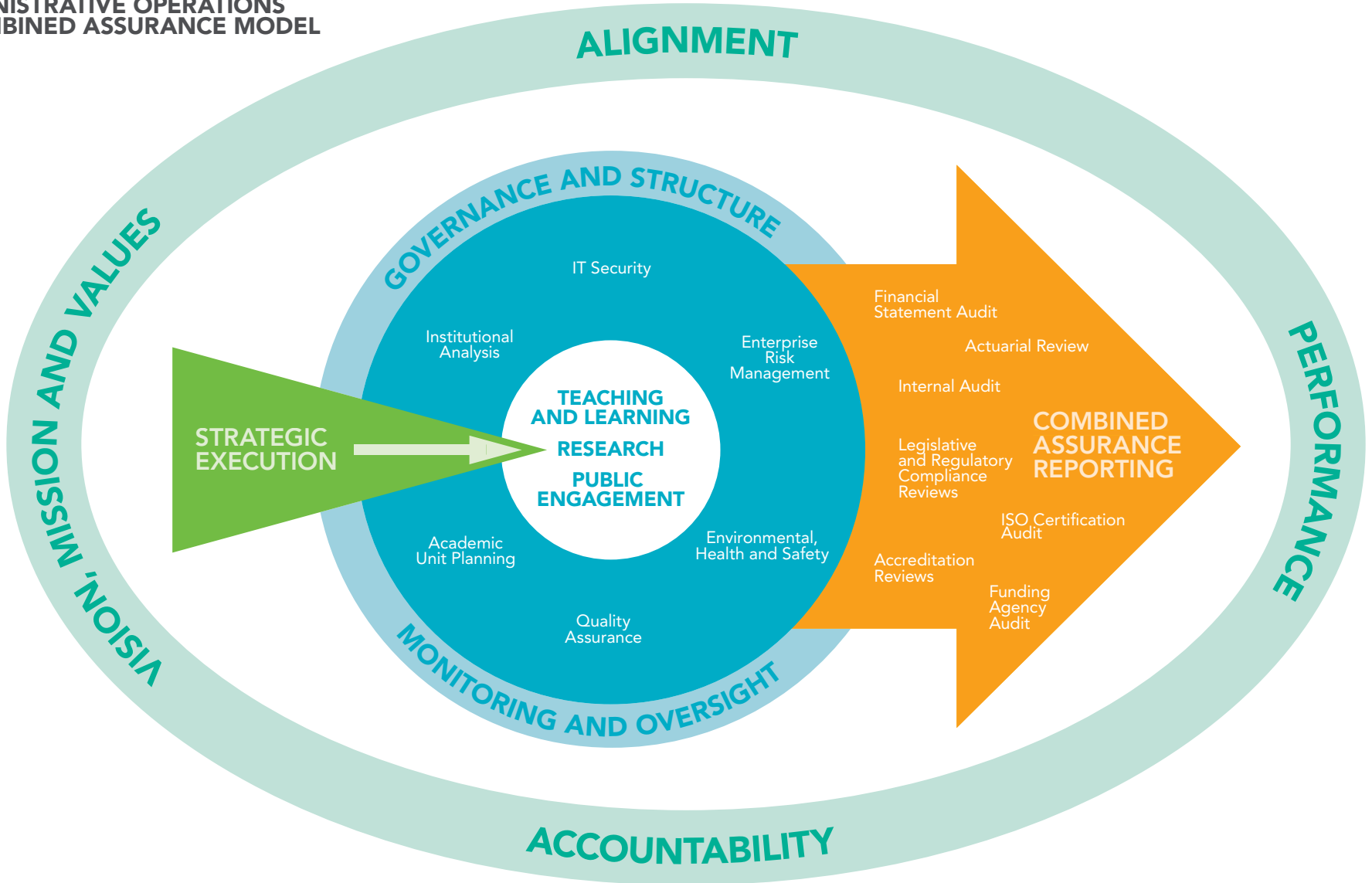


**ADMINISTRATIVE OPERATIONS
- COMBINED ASSURANCE MODEL**



ADMINISTRATIVE OPERATIONS - COMBINED ASSURANCE MODEL

VIDEO SCRIPT

“Assurance” is the trust and confidence gained regarding the reliability of processes. Memorial University utilizes a combined assurance model. This diagram provides a multi-dimensional view of assurance across the university. The model integrates, aligns and co-ordinates assurance outcomes across the university’s operations based on our risk appetite, governance structure and the utilization of resources.

Everything we do at Memorial is guided by our **vision, mission and values**.

The administration embodies best practices to enable the **strategic execution of our frameworks: teaching and learning, research and public engagement**.

University governance and structure ensure clarity of roles, responsibilities and accountabilities through all activities supporting the frameworks. The administration provides **monitoring and oversight** to continuously improve processes and enable the university to achieve objectives.

Various **internal assurance functions** provide continuous reporting on matters of risk to achieve objectives. Multiple **external assurance providers** deliver objective examination of the effectiveness of governance, risk management and control processes. Increased visibility allows for increased reliance on information for effective decision making.

Close, constant and collaborative engagement amongst administration and all members of the university community can be seen in various functions designed to ensure **alignment** with the **vision, mission and values** and enable **accountability** for optimal **performance**.