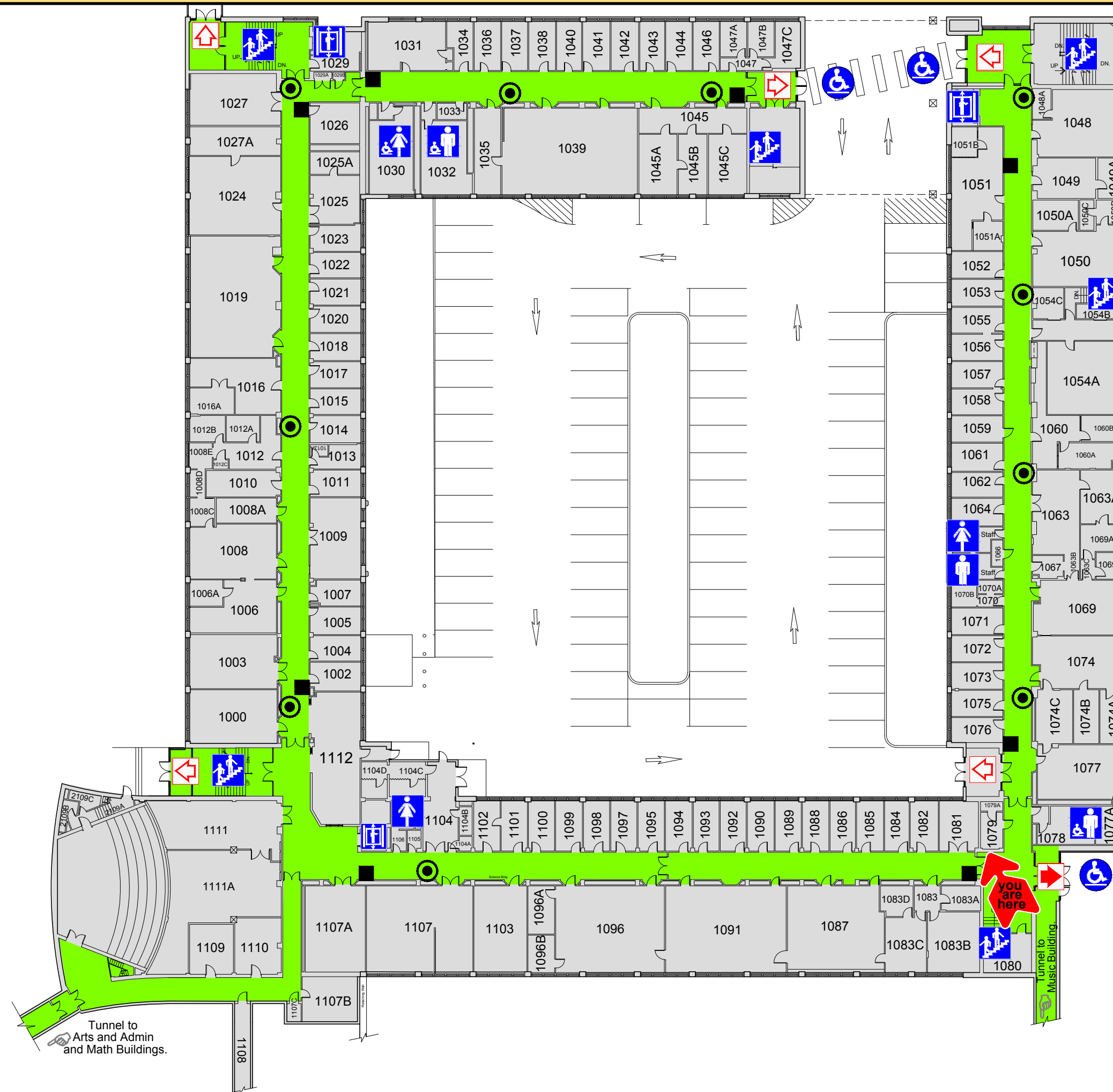


SCIENCE BUILDING

LEVEL 1 - EMERGENCY EVACUATION & LOCATION PLAN



- GD Assembly Points
- ▲ Primary Exit
- △ Secondary Exit
- Corridors / Stairwells / Public Access
- Rooms / Building
- Pull Station
- Fire Extinguisher & Hose Connection
- Stairwell
- E Elevator
- Male Washroom
- Female Washroom
- I Indicates Access for People with Disabilities
- Ⓜ Automated External Defibrillator (AED)
Level 2 - Across from SN 2065
Level 3 - Next to SN 3126
Level 4 - Across from SN 4006

If The Fire Alarm Sounds:

1. Stop all work and remain calm;
2. Evacuate IMMEDIATELY using the nearest safe exit, proceed outside, and clear the building to a minimum distance of 100 m (300 feet) to the nearest assembly point: **DO NOT USE ELEVATORS FOR EVACUATION PURPOSES;**
3. If you require assistance to evacuate:
 - a. take shelter in a safe location,
 - b. inform someone of your location, and
 - c. ask them to notify CEP or Fire Department (Main Entrance) of your location.
4. Do not attempt to remove any vehicle from the parking lot/garage;
5. Obey all instructions of the Emergency Wardens and CEP;
6. Comply with Fire Department orders; and
7. Return to the building only when CEP has authorized you to do so.

If You Discover Fire, See Smoke Or Smell Gas:

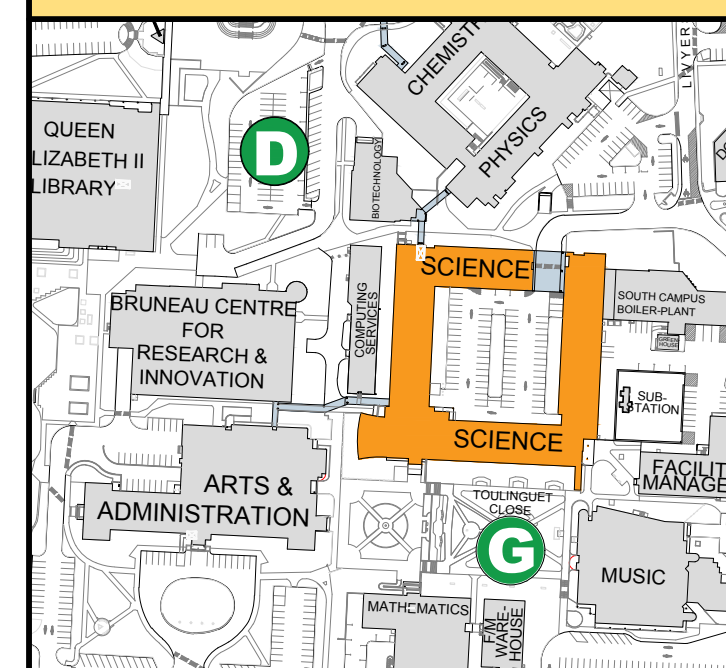
1. Sound alarm to warn occupants; (Fire alarm pull station)
2. Evacuate IMMEDIATELY using the nearest safe exit, proceed outside, and clear the building to a minimum distance of 100 m (300 feet) to the nearest assembly point: **DO NOT USE ELEVATORS FOR EVACUATION PURPOSES;**
3. If you require assistance to evacuate:
 - a. take shelter in a safe location,
 - b. inform someone of your location, and
 - c. ask them to notify CEP or Fire Department (Main Entrance) of your location.
4. If trained to do so, fight fire using a fire extinguisher only if it is small and not between you and an exit; and
5. Call Campus Enforcement and Patrol at 864-4100

Here's how to find a room, if it is SN-1001:

SN - 1 001

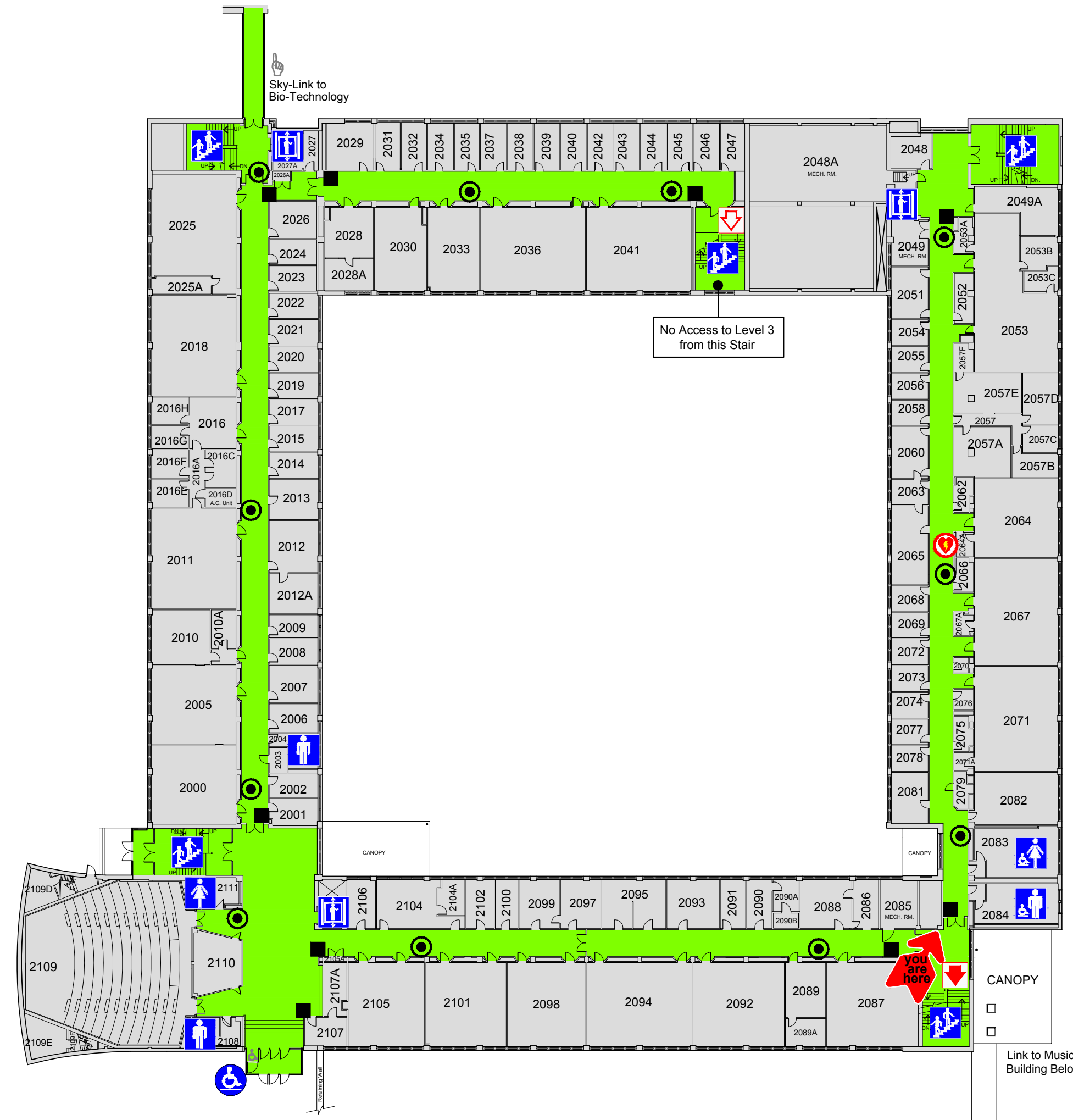
1st Level Room No.

KEY PLAN & ASSEMBLY POINT LOCATIONS



SCIENCE BUILDING

LEVEL 2 - EMERGENCY EVACUATION & LOCATION PLAN



- GD Assembly Points
- ↑ Primary Exit
- ↑ Secondary Exit
- Corridors / Stairwells / Public Access
- Rooms / Building
- Pull Station
- Fire Extinguisher & Hose Connection
- ↕ Stairwell
- E Elevator
- ♂ Male Washroom
- ♀ Female Washroom
- ♿ Indicates Access for People with Disabilities
- Ⓢ Automated External Defibrillator (AED)
Level 2 - Across from SN 2065
Level 3 - Next to SN 3126
Level 4 - Across from SN 4006

If The Fire Alarm Sounds:

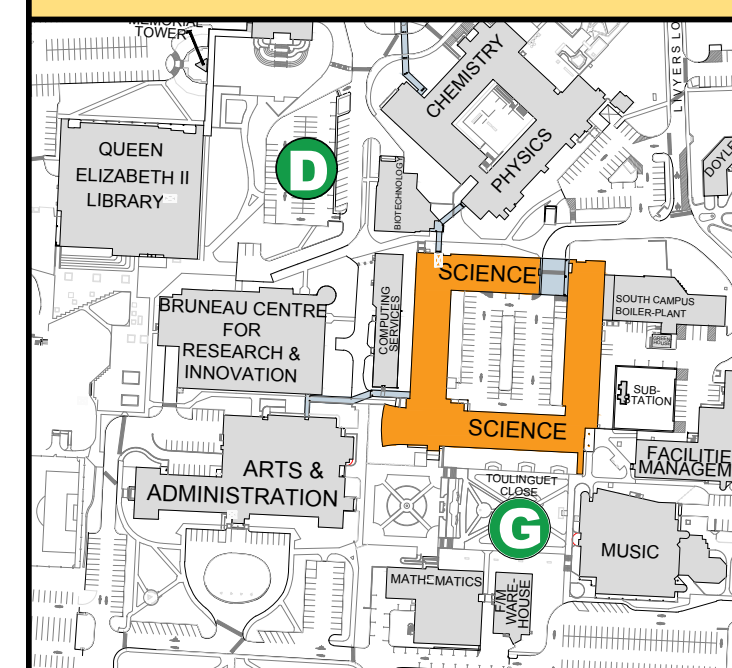
1. Stop all work and remain calm;
2. Evacuate IMMEDIATELY using the nearest safe exit, proceed outside, and clear the building to a minimum distance of 100 m (300 feet) to the nearest assembly point: DO NOT USE ELEVATORS FOR EVACUATION PURPOSES;
3. If you require assistance to evacuate:
 - a. take shelter in a safe location,
 - b. inform someone of your location, and
 - c. ask them to notify CEP or Fire Department (Main Entrance) of your location.
4. Do not attempt to remove any vehicle from the parking lot/garage;
5. Obey all instructions of the Emergency Wardens and CEP;
6. Comply with Fire Department orders; and
7. Return to the building only when CEP has authorized you to do so.

If You Discover Fire, See Smoke Or Smell Gas:

1. Sound alarm to warn occupants; (Fire alarm pull station)
2. Evacuate IMMEDIATELY using the nearest safe exit, proceed outside, and clear the building to a minimum distance of 100 m (300 feet) to the nearest assembly point: DO NOT USE ELEVATORS FOR EVACUATION PURPOSES;
3. If you require assistance to evacuate:
 - a. take shelter in a safe location,
 - b. inform someone of your location, and
 - c. ask them to notify CEP or Fire Department (Main Entrance) of your location.
4. If trained to do so, fight fire using a fire extinguisher only if it is small and not between you and an exit; and
5. Call Campus Enforcement and Patrol at 864-4100

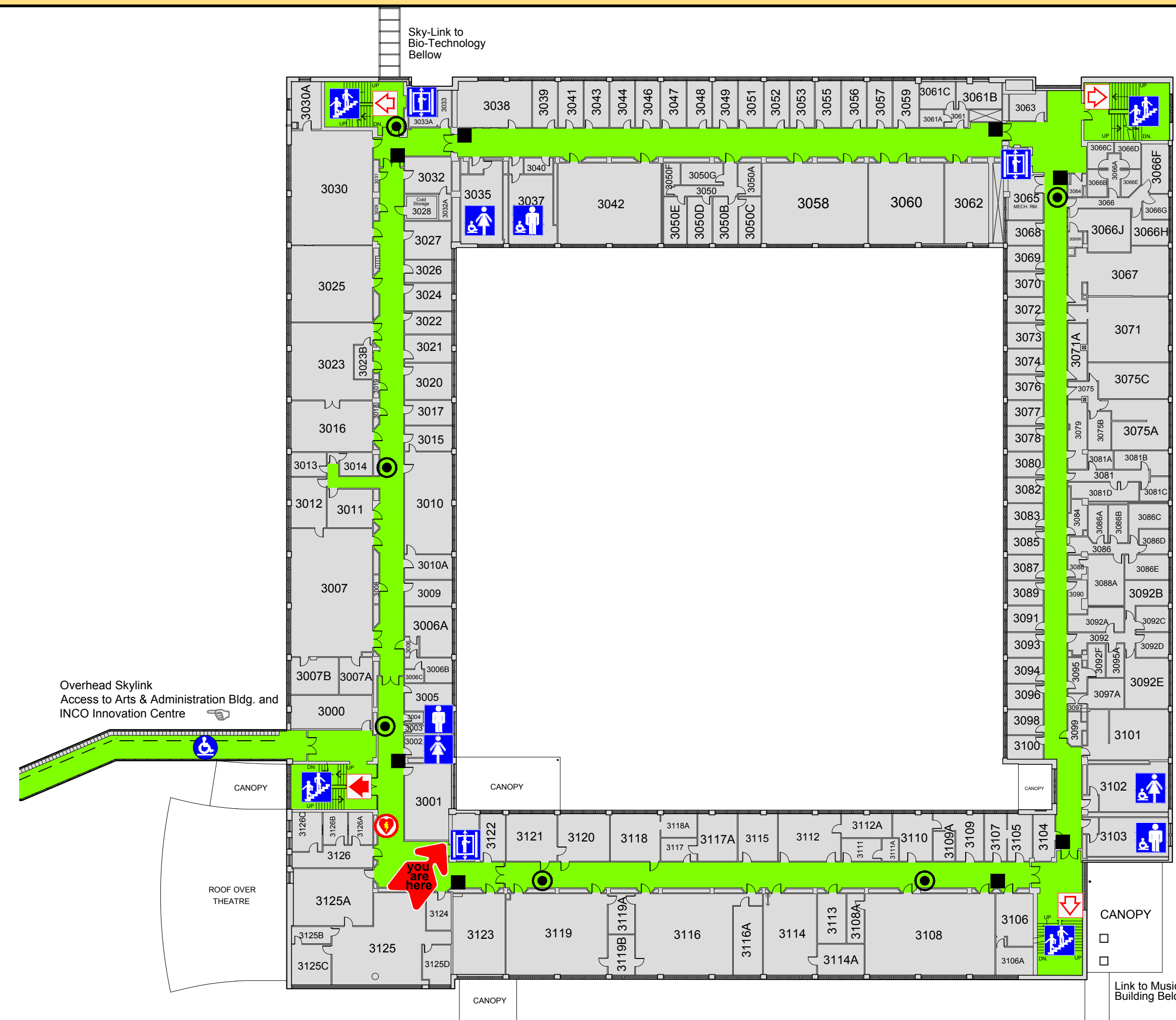
Here's how to find a room, if it is SN-2001:
 SN - 2 001
 2nd Level
 Room No.

KEY PLAN & ASSEMBLY POINT LOCATIONS



SCIENCE BUILDING

LEVEL 3 - EMERGENCY EVACUATION & LOCATION PLAN



- GD Assembly Points
- ↑ Primary Exit
- ↖ Secondary Exit
- Corridors / Stairwells / Public Access
- Rooms / Building
- Pull Station
- Fire Extinguisher & Hose Connection
- ↕ Stairwell
- E Elevator
- ♂ Male Washroom
- ♀ Female Washroom
- ♿ Indicates Access for People with Disabilities
- Ⓜ Automated External Defibrillator (AED)
Level 2 - Across from SN 2065
Level 3 - Next to SN 3126
Level 4 - Across from SN 4006

If The Fire Alarm Sounds:

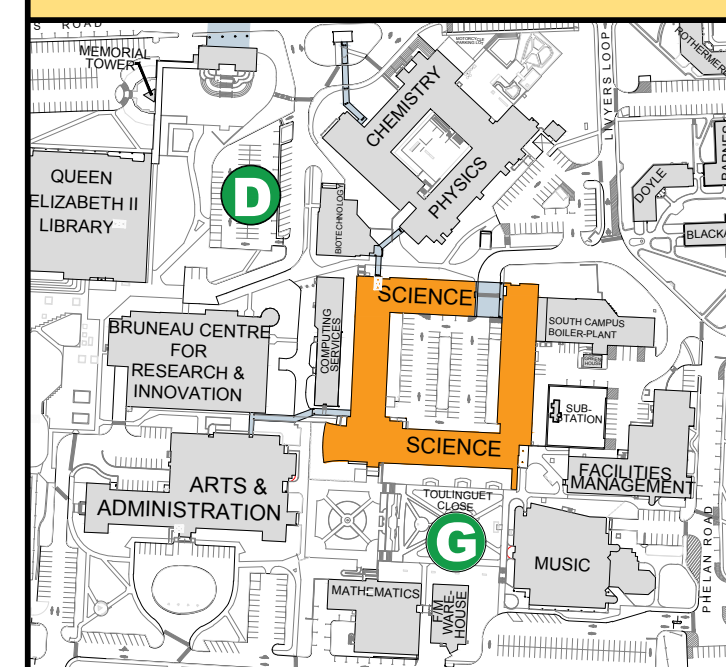
1. Stop all work and remain calm;
2. Evacuate IMMEDIATELY using the nearest safe exit, proceed outside, and clear the building to a minimum distance of 100 m (300 feet) to the nearest assembly point: DO NOT USE ELEVATORS FOR EVACUATION PURPOSES;
3. If you require assistance to evacuate:
 - a. take shelter in a safe location,
 - b. inform someone of your location, and
 - c. ask them to notify CEP or Fire Department (Main Entrance) of your location.
4. Do not attempt to remove any vehicle from the parking lot/garage;
5. Obey all instructions of the Emergency Wardens and CEP;
6. Comply with Fire Department orders; and
7. Return to the building only when CEP has authorized you to do so.

If You Discover Fire, See Smoke Or Smell Gas:

1. Sound alarm to warn occupants; (Fire alarm pull station)
2. Evacuate IMMEDIATELY using the nearest safe exit, proceed outside, and clear the building to a minimum distance of 100 m (300 feet) to the nearest assembly point: DO NOT USE ELEVATORS FOR EVACUATION PURPOSES;
3. If you require assistance to evacuate:
 - a. take shelter in a safe location,
 - b. inform someone of your location, and
 - c. ask them to notify CEP or Fire Department (Main Entrance) of your location.
4. If trained to do so, fight fire using a fire extinguisher only if it is small and not between you and an exit; and
5. Call Campus Enforcement and Patrol at 864-4100

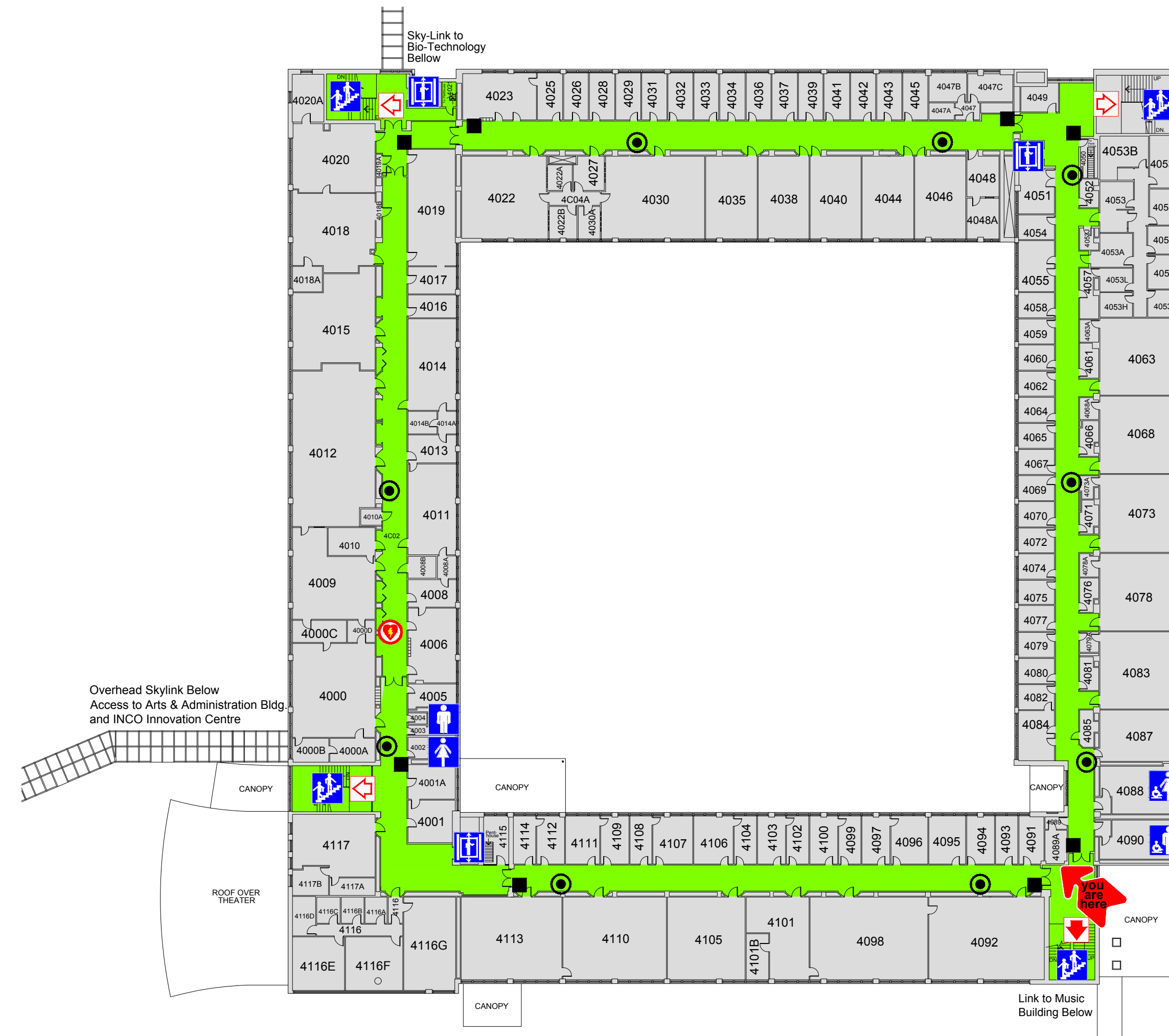
Here's how to find a room, if it is SN-3001:
 SN - 3 001
 3rd Level →
 Room No. →

KEY PLAN & ASSEMBLY POINT LOCATIONS



SCIENCE BUILDING

LEVEL 4 - EMERGENCY EVACUATION & LOCATION PLAN



- DG Assembly Points
- ↑ Primary Exit
- ↑ Secondary Exit
- Corridors / Stairwells / Public Access
- Rooms / Building
- Pull Station
- Fire Extinguisher & Hose Connection
- ↕ Stairwell
- ⬆️ Elevator
- ♂️ Male Washroom
- ♀️ Female Washroom
- ♿️ Indicates Access for People with Disabilities
- Ⓜ️ Automated External Defibrillator (AED)
 Level 2 - Across from SN 2065
 Level 3 - Next to SN 3126
 Level 4 - Across from SN 4006

If The Fire Alarm Sounds:

1. Stop all work and remain calm;
2. Evacuate IMMEDIATELY using the nearest safe exit, proceed outside, and clear the building to a minimum distance of 100 m (300 feet) to the nearest assembly point: DO NOT USE ELEVATORS FOR EVACUATION PURPOSES;
3. If you require assistance to evacuate:
 - a. take shelter in a safe location,
 - b. inform someone of your location, and
 - c. ask them to notify CEP or Fire Department (Main Entrance) of your location.
4. Do not attempt to remove any vehicle from the parking lot/garage;
5. Obey all instructions of the Emergency Wardens and CEP;
6. Comply with Fire Department orders; and
7. Return to the building only when CEP has authorized you to do so.

If You Discover Fire, See Smoke Or Smell Gas:

1. Sound alarm to warn occupants; (Fire alarm pull station)
2. Evacuate IMMEDIATELY using the nearest safe exit, proceed outside, and clear the building to a minimum distance of 100 m (300 feet) to the nearest assembly point: DO NOT USE ELEVATORS FOR EVACUATION PURPOSES;
3. If you require assistance to evacuate:
 - a. take shelter in a safe location,
 - b. inform someone of your location, and
 - c. ask them to notify CEP or Fire Department (Main Entrance) of your location.
4. If trained to do so, fight fire using a fire extinguisher only if it is small and not between you and an exit; and
5. Call Campus Enforcement and Patrol at 864-4100

Here's how to find a room, if it is SN-4001:

SN - 4 001

4th Level _____

Room No. _____

