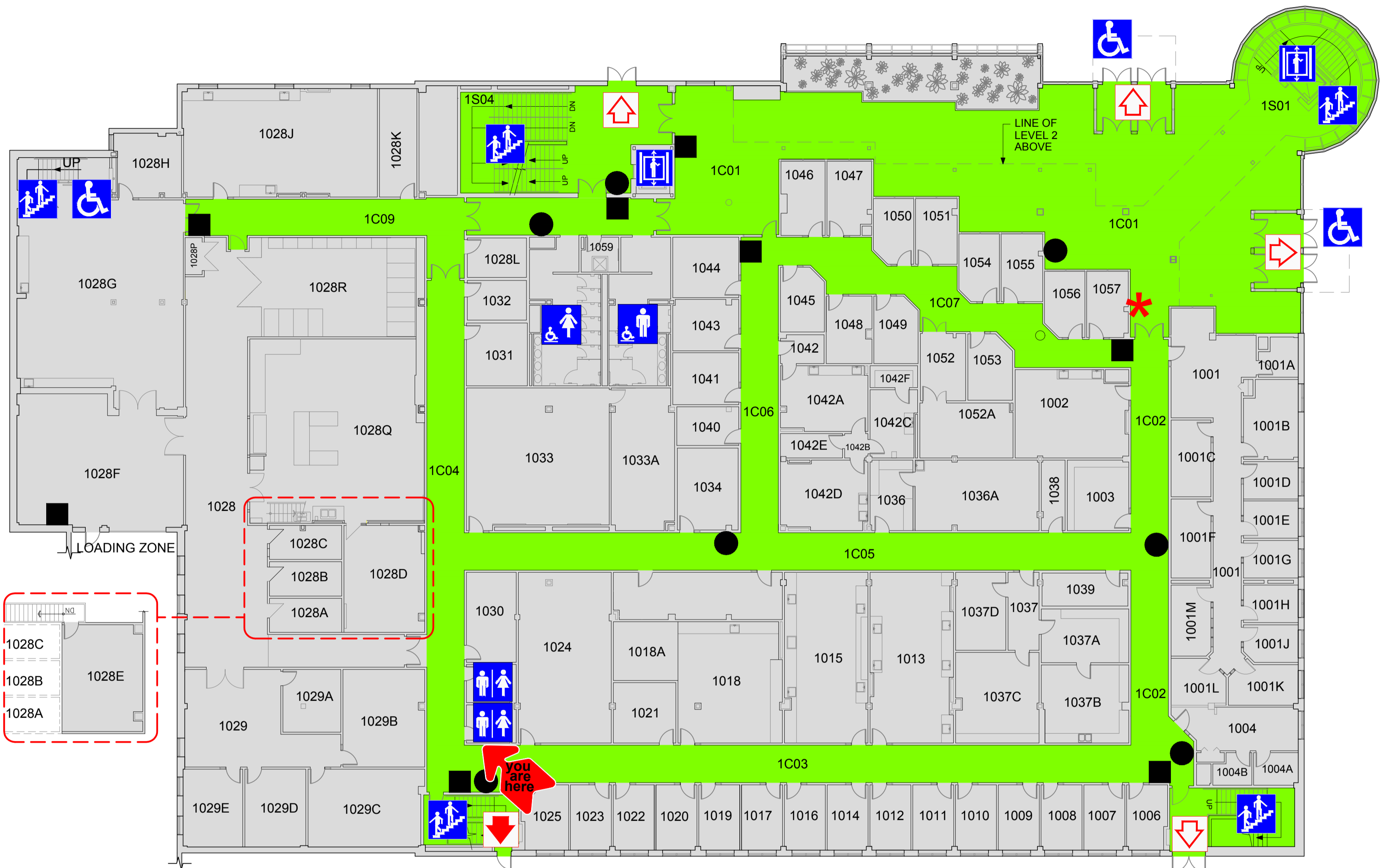


# BRUNEAU - INCO INNOVATION CENTER

## LEVEL 1 - EMERGENCY EVACUATION & LOCATION PLAN



### Legend:

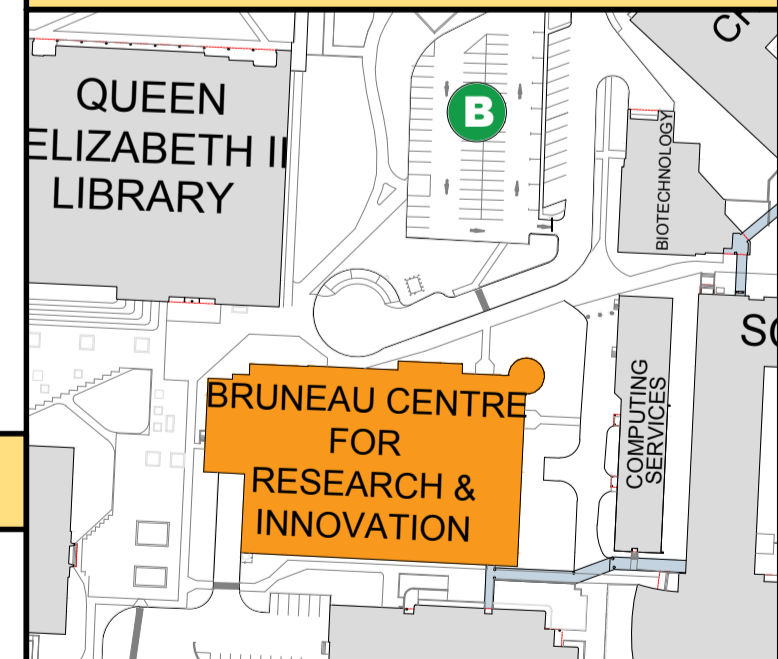
Assembly Point	Fire Extinguisher	Automated External Defibrillator (AED) (Level 2 outside 2001)
Primary Exit	Washrooms	Alarm Panel
Secondary Exit	Elevator	
Corridors / Stairwells	Stairwell	
Rooms / Building	Indicates Access for People with Disabilities	
Pull Station		

Here's how to find a room, if it is IIC-1001:

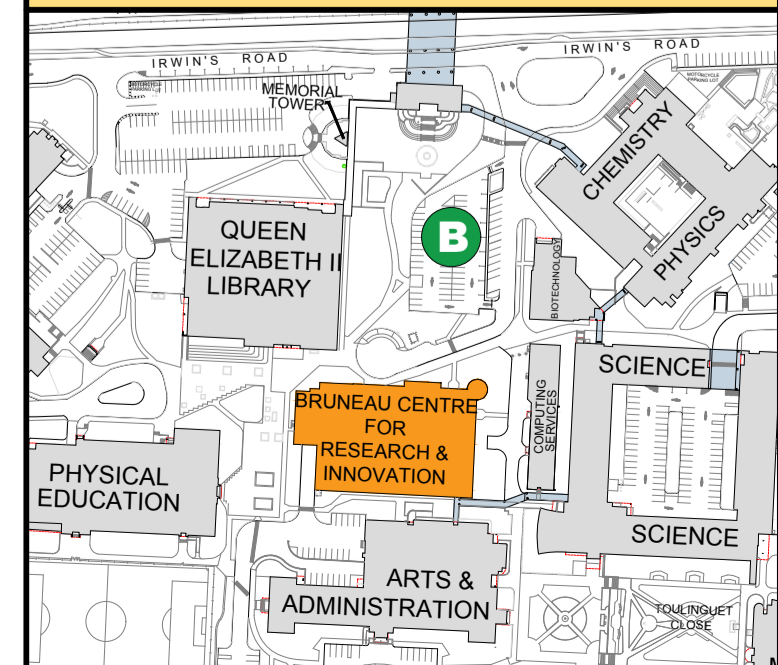
**IIC-1 001**

1st Level Room No.

### ASSEMBLY POINT LOCATIONS



### KEY PLAN



### If The Fire Alarm Sounds:

1. Stop all work and remain calm;
2. Evacuate IMMEDIATELY using the nearest safe exit, proceed outside, and clear the building to a minimum distance of 100 m (300 feet) to the nearest assembly point: DO NOT USE ELEVATORS FOR EVACUATION PURPOSES;
3. If you require assistance to evacuate:
  - a. take shelter in a safe location,
  - b. inform someone of your location, and
  - c. ask them to notify CEP or Fire Department (Main Entrance) of your location.
4. Do not attempt to remove any vehicle from the parking lot/garage;
5. Obey all instructions of the Emergency Wardens and CEP;
6. Comply with Fire Department orders; and
7. Return to the building only when CEP has authorized you to do so.

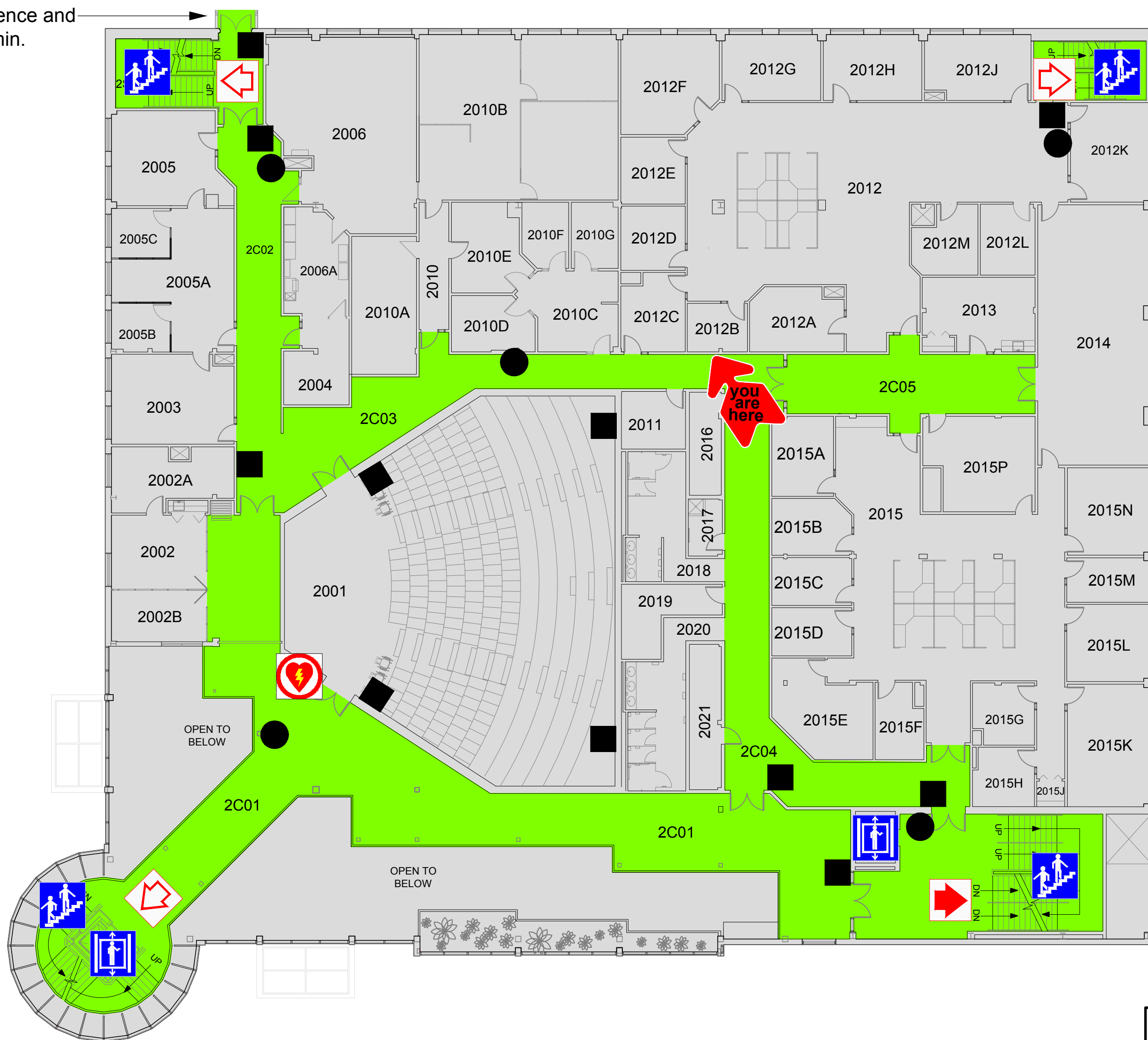
### If You Discover Fire, See Smoke Or Smell Gas:

1. Sound alarm to warn occupants; (Fire alarm pull station)
2. Evacuate IMMEDIATELY using the nearest safe exit, proceed outside, and clear the building to a minimum distance of 100 m (300 feet) to the nearest assembly point: DO NOT USE ELEVATORS FOR EVACUATION PURPOSES;
3. If you require assistance to evacuate:
  - a. take shelter in a safe location,
  - b. inform someone of your location, and
  - c. ask them to notify CEP or Fire Department (Main Entrance) of your location.
4. If trained to do so, fight fire using a fire extinguisher only if it is small and not between you and an exit; and
5. Call Campus Enforcement and Patrol at 864-4100

# BRUNEAU CENTRE FOR RESEARCH AND INNOVATION

## LEVEL 2 - EMERGENCY EVACUATION & LOCATION PLAN

Link to Science and Arts & Admin.



### Legend:

Assembly Point	Fire Extinguisher	Indicates Access for People with Disabilities
Primary Exit	Pull Station	Automated External Defibrillator (AED) (Level 2 outside 2001)
Secondary Exit	Washrooms	
Corridors / Stairwells	Elevator	
Rooms / Building	Stairwell	

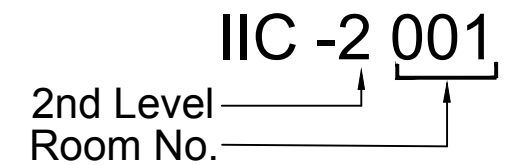
### If The Fire Alarm Sounds:

1. Stop all work and remain calm;
2. Evacuate IMMEDIATELY using the nearest safe exit, proceed outside, and clear the building to a minimum distance of 100 m (300 feet) to the nearest assembly point: DO NOT USE ELEVATORS FOR EVACUATION PURPOSES;
3. If you require assistance to evacuate:
  - a. take shelter in a safe location,
  - b. inform someone of your location, and
  - c. ask them to notify CEP or Fire Department (Main Entrance) of your location.
4. Do not attempt to remove any vehicle from the parking lot/garage;
5. Obey all instructions of the Emergency Wardens and CEP;
6. Comply with Fire Department orders; and
7. Return to the building only when CEP has authorized you to do so.

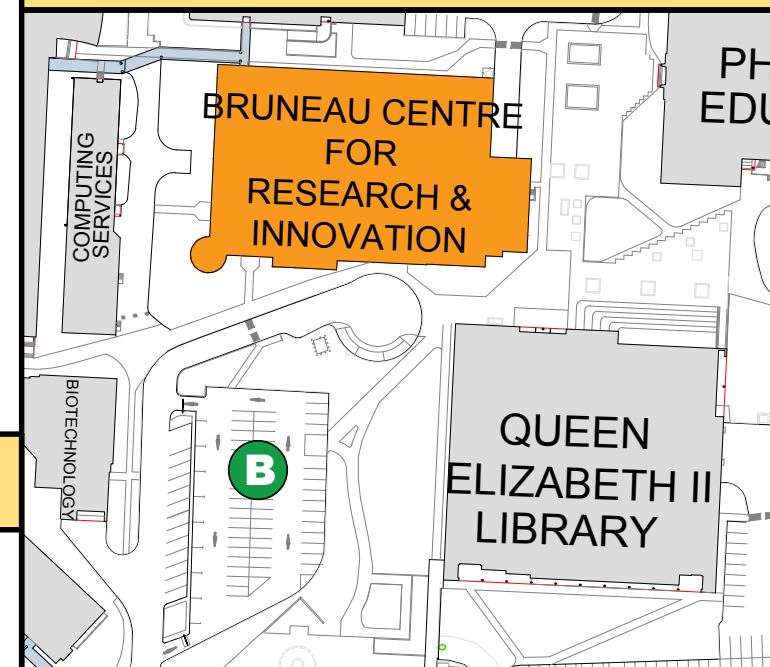
### If You Discover Fire, See Smoke Or Smell Gas:

1. Sound alarm to warn occupants; (Fire alarm pull station)
2. Evacuate IMMEDIATELY using the nearest safe exit, proceed outside, and clear the building to a minimum distance of 100 m (300 feet) to the nearest assembly point: DO NOT USE ELEVATORS FOR EVACUATION PURPOSES;
3. If you require assistance to evacuate:
  - a. take shelter in a safe location,
  - b. inform someone of your location, and
  - c. ask them to notify CEP or Fire Department (Main Entrance) of your location.
4. If trained to do so, fight fire using a fire extinguisher only if it is small and not between you and an exit; and
5. Call Campus Enforcement and Patrol at 864-4100

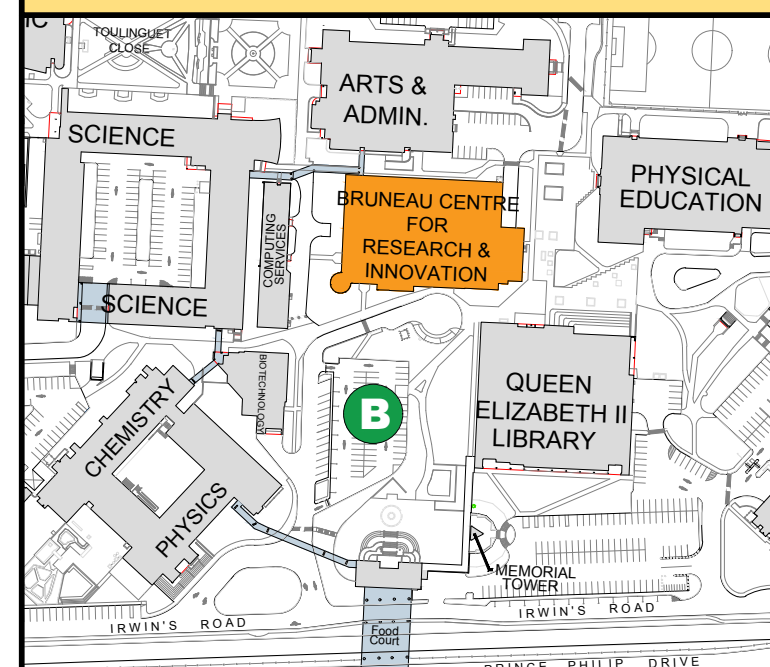
Here's how to find a room, if it is IIC-2001:



### ASSEMBLY POINT LOCATIONS

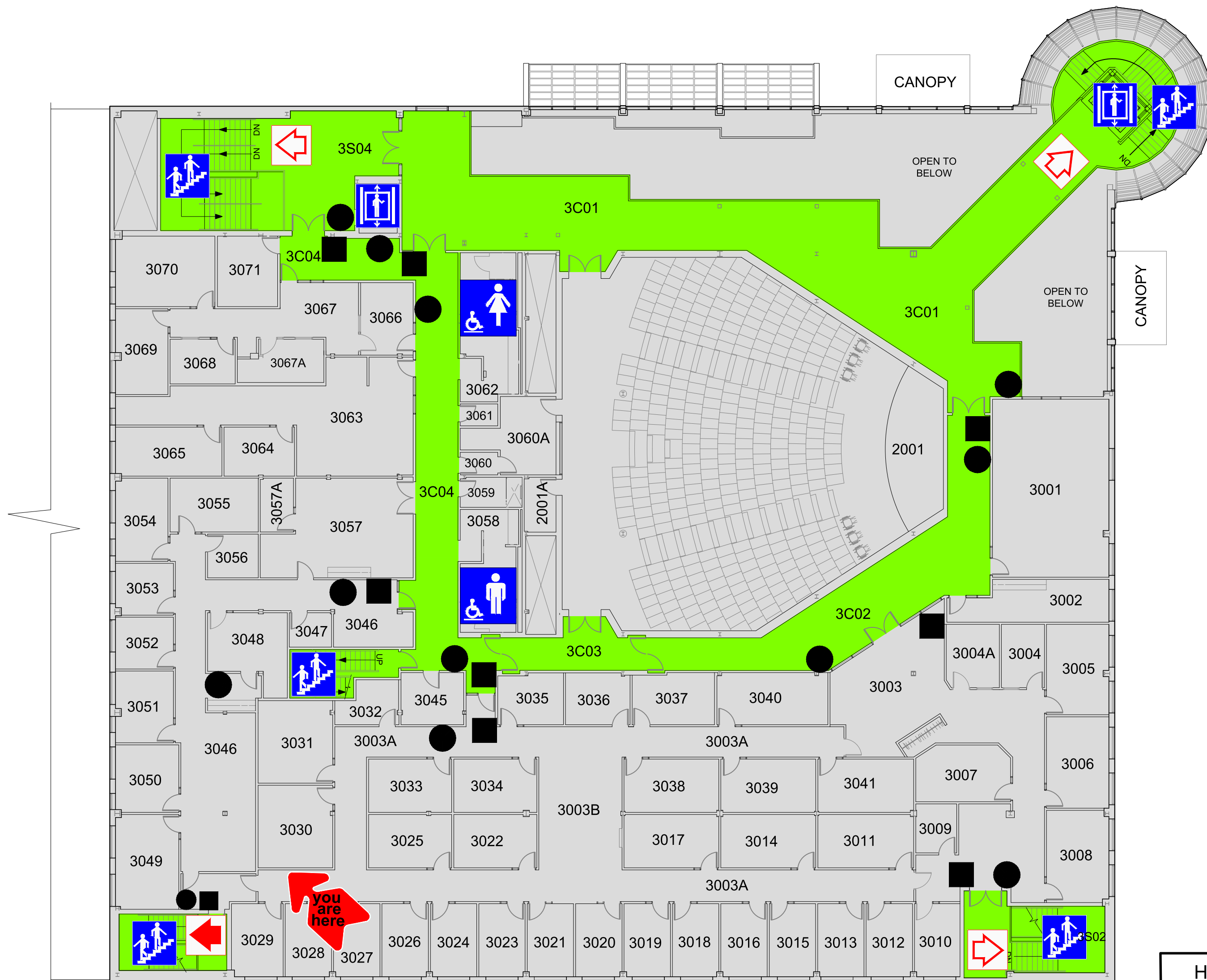


### KEY PLAN



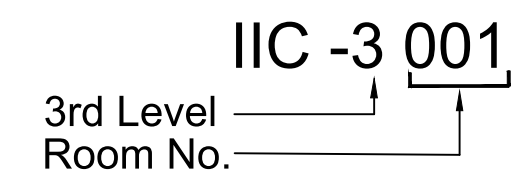
# BRUNEAU CENTRE FOR RESEARCH AND INNOVATION

## LEVEL 3 - EMERGENCY EVACUATION & LOCATION PLAN



Link to Science and Arts & Admin Below.

Here's how to find a room, if it is IIC-3001:



### Legend:

Assembly Point	Fire Extinguisher	Indicates Access for People with Disabilities
Primary Exit	Pull Station	Automated External Defibrillator (AED) (Level 2 outside 2001)
Secondary Exit	Washrooms	
Corridors / Stairwells	Elevator	
Rooms / Building	Stairwell	

### If The Fire Alarm Sounds:

1. Stop all work and remain calm;
2. Evacuate IMMEDIATELY using the nearest safe exit, proceed outside, and clear the building to a minimum distance of 100 m (300 feet) to the nearest assembly point: DO NOT USE ELEVATORS FOR EVACUATION PURPOSES;
3. If you require assistance to evacuate:
  - a. take shelter in a safe location,
  - b. inform someone of your location, and
  - c. ask them to notify CEP or Fire Department (Main Entrance) of your location.
4. Do not attempt to remove any vehicle from the parking lot/garage;
5. Obey all instructions of the Emergency Wardens and CEP;
6. Comply with Fire Department orders; and
7. Return to the building only when CEP has authorized you to do so.

### If You Discover Fire, See Smoke Or Smell Gas:

1. Sound alarm to warn occupants; (Fire alarm pull station)
2. Evacuate IMMEDIATELY using the nearest safe exit, proceed outside, and clear the building to a minimum distance of 100 m (300 feet) to the nearest assembly point: DO NOT USE ELEVATORS FOR EVACUATION PURPOSES;
3. If you require assistance to evacuate:
  - a. take shelter in a safe location,
  - b. inform someone of your location, and
  - c. ask them to notify CEP or Fire Department (Main Entrance) of your location.
4. If trained to do so, fight fire using a fire extinguisher only if it is small and not between you and an exit; and
5. Call Campus Enforcement and Patrol at 864-4100

### ASSEMBLY POINT LOCATIONS



### KEY PLAN

