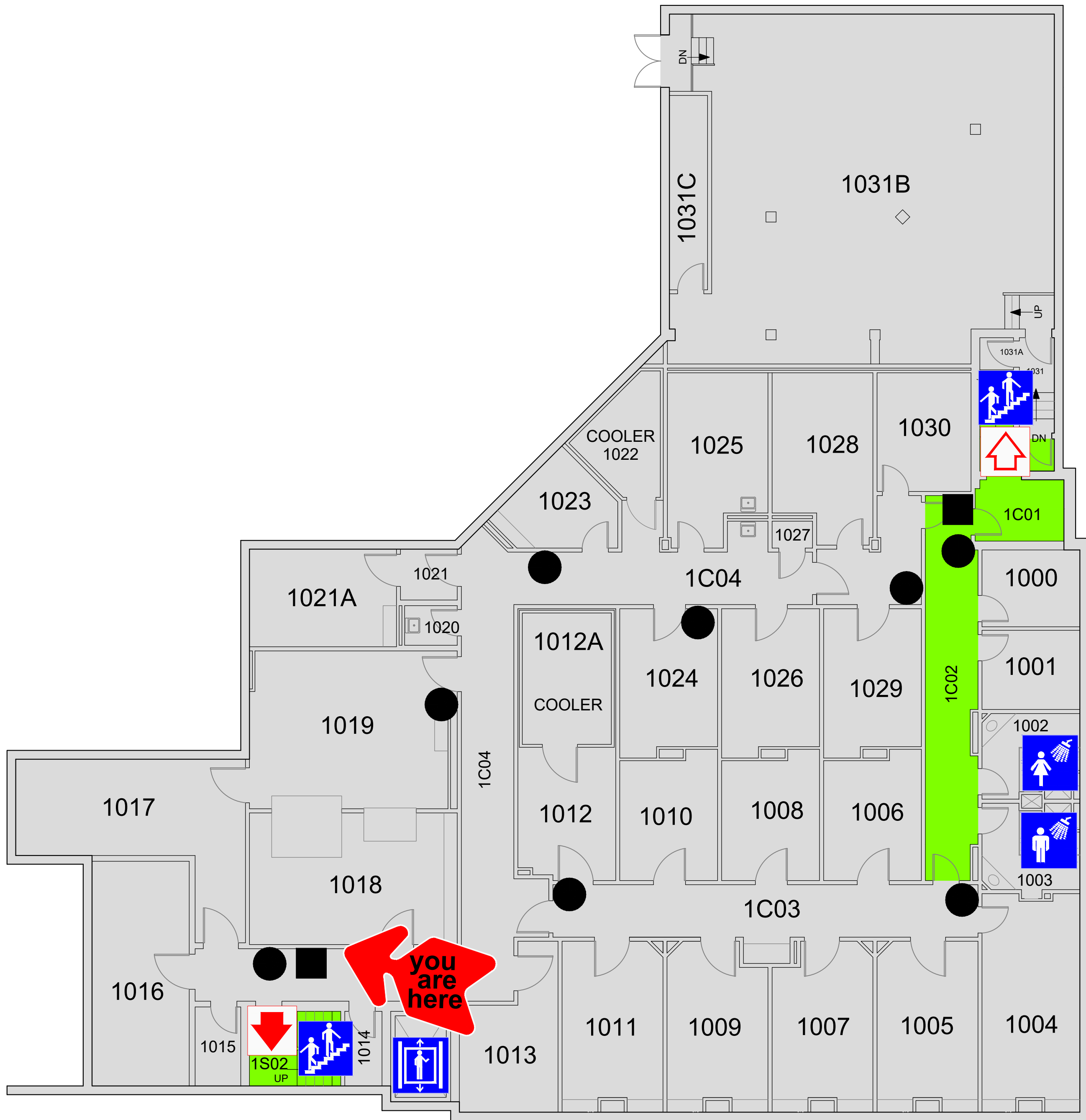


BIOTECHNOLOGY BUILDING

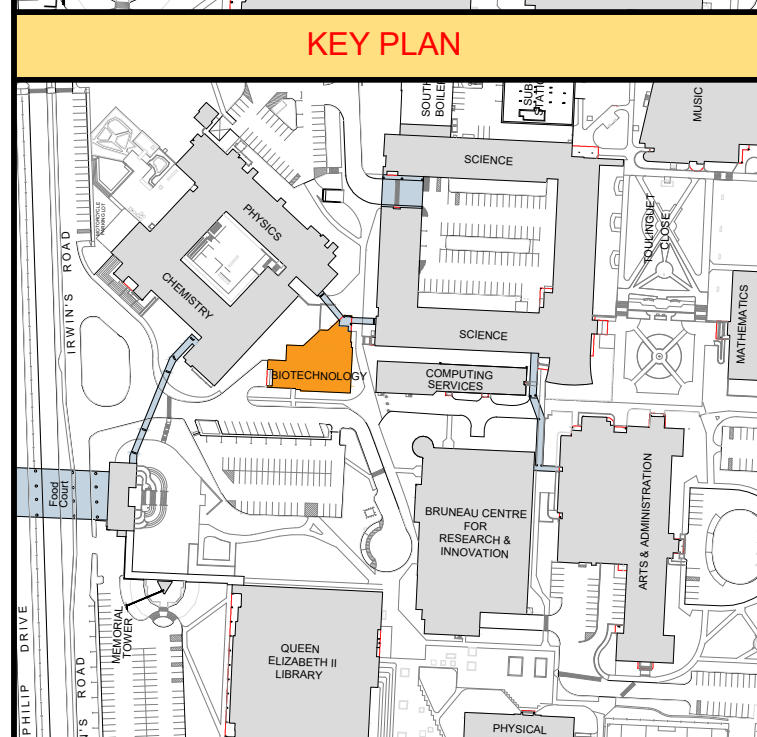
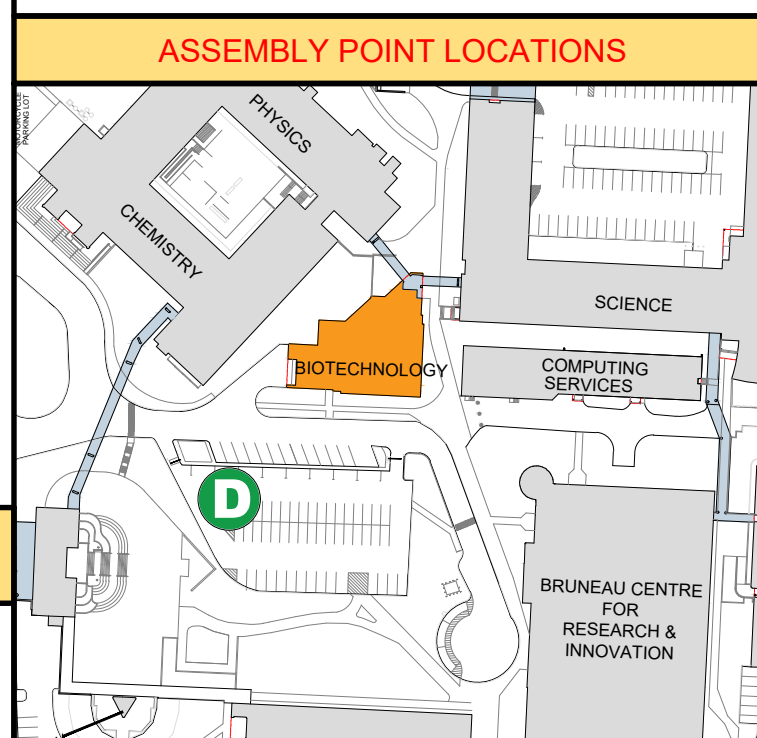
LEVEL 1 - EMERGENCY EVACUATION & LOCATION PLAN



Legend:

- Assembly Point
- Primary Exit
- Secondary Exit
- Corridors / Stairwells
- Rooms / Building
- Pull Station
- Fire Extinguisher
- Shower/Washrooms
- Stairwell
- Elevator
- Automated External Defibrillator (AED) Outside 3000B

Here's how to find a room, if it is BT-1001:
BT - 1 001
 1st Level _____ Room No.



If The Fire Alarm Sounds:

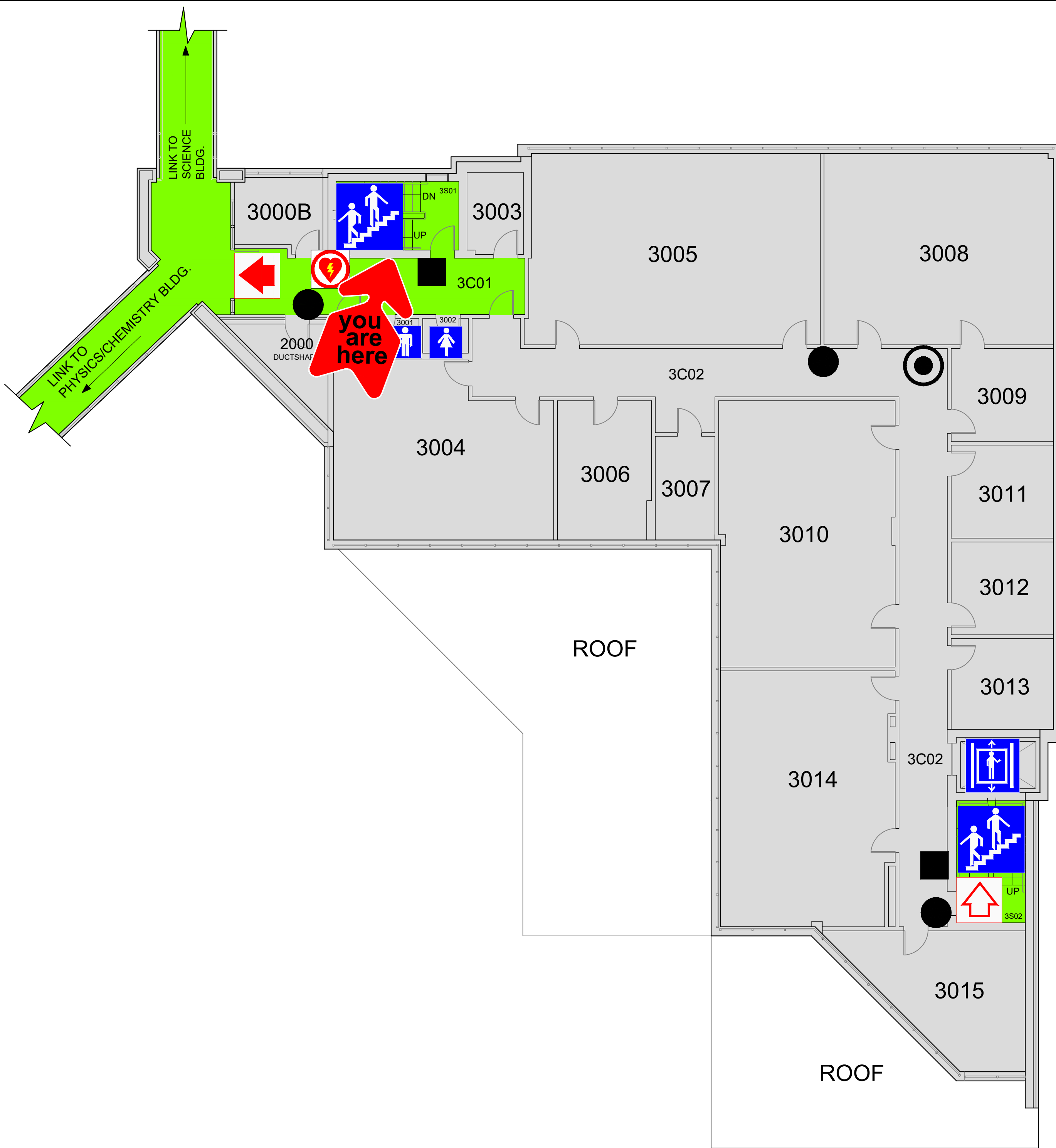
1. Stop all work and remain calm;
2. Evacuate IMMEDIATELY using the nearest safe exit, proceed outside, and clear the building to a minimum distance of 100 m (300 feet) to the nearest assembly point: **DO NOT USE ELEVATORS FOR EVACUATION PURPOSES;**
3. If you require assistance to evacuate:
 - a. take shelter in a safe location,
 - b. inform someone of your location, and
 - c. ask them to notify CEP or Fire Department (Main Entrance) of your location.
4. Do not attempt to remove any vehicle from the parking lot/garage;
5. Obey all instructions of the Emergency Wardens and CEP;
6. Comply with Fire Department orders; and
7. Return to the building only when CEP has authorized you to do so.

If You Discover Fire, See Smoke Or Smell Gas:

1. Sound alarm to warn occupants; (Fire alarm pull station)
2. Evacuate IMMEDIATELY using the nearest safe exit, proceed outside, and clear the building to a minimum distance of 100 m (300 feet) to the nearest assembly point: **DO NOT USE ELEVATORS FOR EVACUATION PURPOSES;**
3. If you require assistance to evacuate:
 - a. take shelter in a safe location,
 - b. inform someone of your location, and
 - c. ask them to notify CEP or Fire Department (Main Entrance) of your location.
4. If trained to do so, fight fire using a fire extinguisher only if it is small and not between you and an exit; and
5. Call Campus Enforcement and Patrol at 864-4100

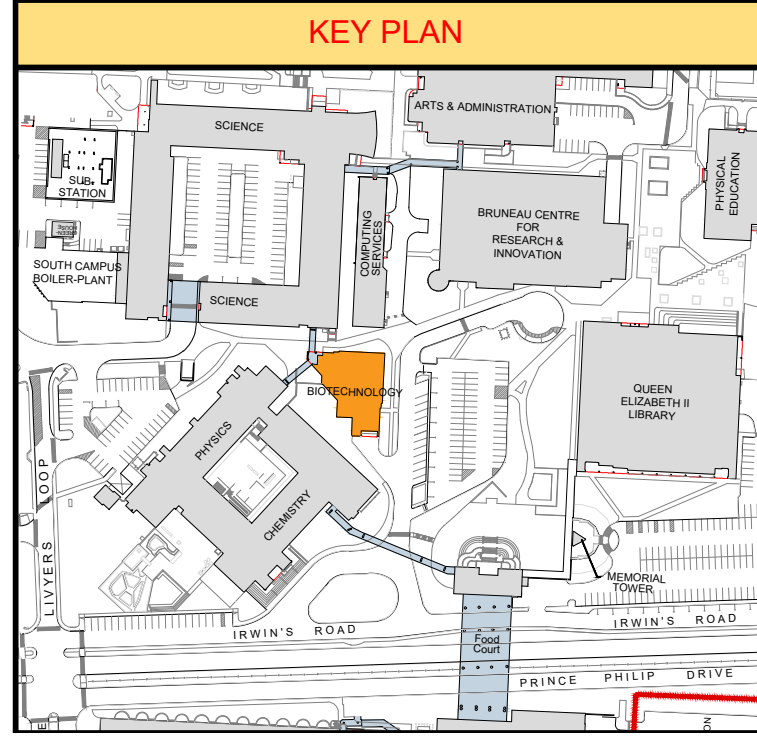
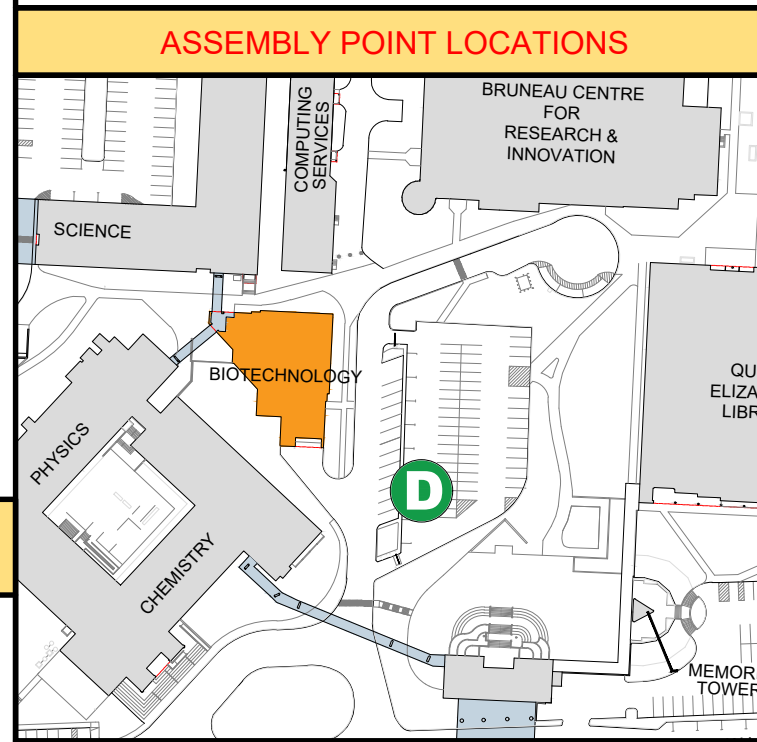
BIOTECHNOLOGY BUILDING

LEVEL 3 - EMERGENCY EVACUATION & LOCATION PLAN



Legend:	
	Assembly Point
	Primary Exit
	Secondary Exit
	Corridors / Stairwells
	Rooms / Building
	Pull Station
	Fire Extinguisher
	Fire Blanket
	Washroom
	Stairwell
	Elevator
	Automated External Defibrillator (AED) (Main Lobby)

Here's how to find a room, if it is BT-3001:
BT -3 001
 3rd Level Room No.



If The Fire Alarm Sounds:

1. Stop all work and remain calm;
2. Evacuate IMMEDIATELY using the nearest safe exit, proceed outside, and clear the building to a minimum distance of 100 m (300 feet) to the nearest assembly point: DO NOT USE ELEVATORS FOR EVACUATION PURPOSES;
3. If you require assistance to evacuate:
 - a. take shelter in a safe location,
 - b. inform someone of your location, and
 - c. ask them to notify CEP or Fire Department (Main Entrance) of your location.
4. Do not attempt to remove any vehicle from the parking lot/garage;
5. Obey all instructions of the Emergency Wardens and CEP;
6. Comply with Fire Department orders; and
7. Return to the building only when CEP has authorized you to do so.

If You Discover Fire, See Smoke Or Smell Gas:

1. Sound alarm to warn occupants; (Fire alarm pull station)
2. Evacuate IMMEDIATELY using the nearest safe exit, proceed outside, and clear the building to a minimum distance of 100 m (300 feet) to the nearest assembly point: DO NOT USE ELEVATORS FOR EVACUATION PURPOSES;
3. If you require assistance to evacuate:
 - a. take shelter in a safe location,
 - b. inform someone of your location, and
 - c. ask them to notify CEP or Fire Department (Main Entrance) of your location.
4. If trained to do so, fight fire using a fire extinguisher only if it is small and not between you and an exit; and
5. Call Campus Enforcement and Patrol at 864-4100