



THE LESLIE HARRIS CENTRE of regional policy and development is Memorial University's hub for public policy and regional development issues.

The Harris Centre links Memorial researchers with groups all over Newfoundland and Labrador, supporting two-way engagement throughout the research process.

Working with all units at Memorial, we build connections, encourage informed debate, and support collaboration, enhancing the University and the Province through mutually beneficial partnerships.

To find out more about the Harris Centre, please visit us at www.mun.ca/harriscentre. You can also find us on Facebook and Twitter.



MEMORIAL
PRESENTS

PUSHING BACK FROM THE EDGE

EDUCATION IN DIFFICULT TIMES

Wednesday, August 21, 2013
Innovation Hall, Bruneau Centre for
Innovation
Memorial University

www.mun.ca/harriscentre



edge
conference 2013



PRESENTERS

edge

conference 2013



The 2013 **At the EDGE: Creating Direction for Peace and Justice** conference is intended for anyone who is involved in educating and working with youth and believes in creating socially just communities that positively impact our youth.

Dr. Ursula Kelly is an educator whose broad-based research on culture, place, difference, and identity is consistently framed within the context of her home province and the hopes and challenges that have emerged from its complex history. Her teaching, scholarship, and research, which are located within the broad areas of cultural studies and critical educational theory, are underscored by an ethic

of justice, care, and mutuality. She is committed to a vision of education that positions schools as stewards of hope within a re-imagined realm of the possible. In 2006, in recognition of her teaching, and the research and scholarly writing associated with it, Memorial University presented her with the President's Award for Distinguished Teaching.



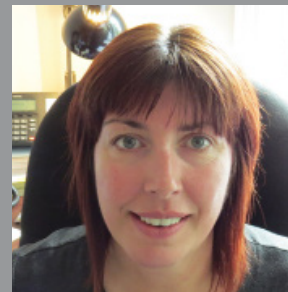
Mikaela Clark-Gardner is a grade 12 student at Prince of Wales Collegiate in St. John's. Passionate about connecting the arts and social justice, she is actively engaged in theatre, film, art and social justice issues. Mikaela is involved in various leadership groups that create opportunities for youth to make a difference in our schools and community. Some of these groups include the PWC Student Council, the Mayors Advisory Committee for Youth, and RADHOC (MUN youth social justice group).

Mikaela is currently working this summer as a lifeguard at the Aquarena. She loves nature, travel, music and her cat, Kaeya.



Scott Morton-Ninomiya career has encompassed many aspects of social justice: refugee advocacy, housing and restorative justice. He came to Newfoundland and Labrador in 2002 to build local restorative justice capacity, heading an NGO, organizing provincial conferences and managing a program in the Department of Justice. Currently, Scott is the City of St. John's Affordable Housing Coordinator and volunteer with Happy City, a grassroots group dedicated to engagement in civic issues.

Scott lives with his partner Melody in St. John's with their three children: Maya (12), Aidan (10) and Bertha (8). In his spare time Scott enjoys distance running, hiking and choral singing and has recently began exploring sea kayaking.



Angela Crockwell is the Executive Director for Thrive, a position she has held since 2001. She is a graduate of Acadia University, and has over 20 years' experience working in the not-for-profit sector. Angela works from a strengths based perspective, and brings a community development and social justice lens to her work. She is most happy developing supports and services for youth who are often marginalized within mainstream society.

Tonight's event is being webcast live, and a recorded version will be available to watch online. Find it and other past Memorial Presents events at: www.mun.ca/harriscentre/media

Special thanks to Distance Education, Learning and Teaching Support for their continued support of this initiative: distance.mun.ca

Tonight's event will be broadcast by Rogers TV Cable 9 in the NE Avalon region. Check listings for broadcast times: rogerstv.com