

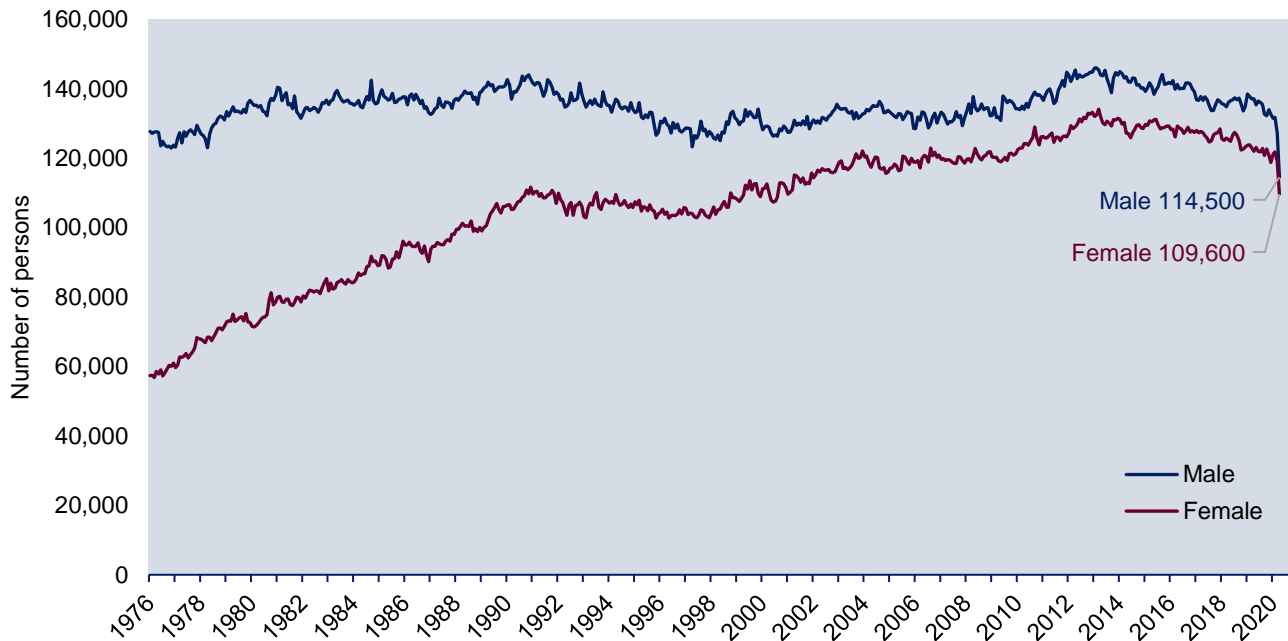
LABOUR MARKET OBSERVER

Commentary on Labour Market Performance in Newfoundland and Labrador

APRIL 2020 - EXTRA FIGURES

This document provides figures summarizing key labour market indicators by sex for Newfoundland & Labrador over the period January 1976 to April 2020. These figures are intended to provide supplementary information to the **CARE Labour Market Observer for April 2020** (see: https://www.mun.ca/care/LMO_April_2020.pdf). This extended time series perspective helps to highlight the unprecedented situation facing the NL economy and labour market. The figures below provide, by sex, monthly numbers on the: size of the labour force (**Figure EX1**); participation rate (**Figure EX2**); level of employment (**Figure EX3**); unemployment level (**Figure EX4**); and, unemployment rate (**Figure EX5**). These data have been obtained from the Canada Labour Force Survey (LFS) and are seasonally adjusted.

Figure EX1: NL Labour force (number of adults age 15+) by sex, monthly, seasonally adjusted

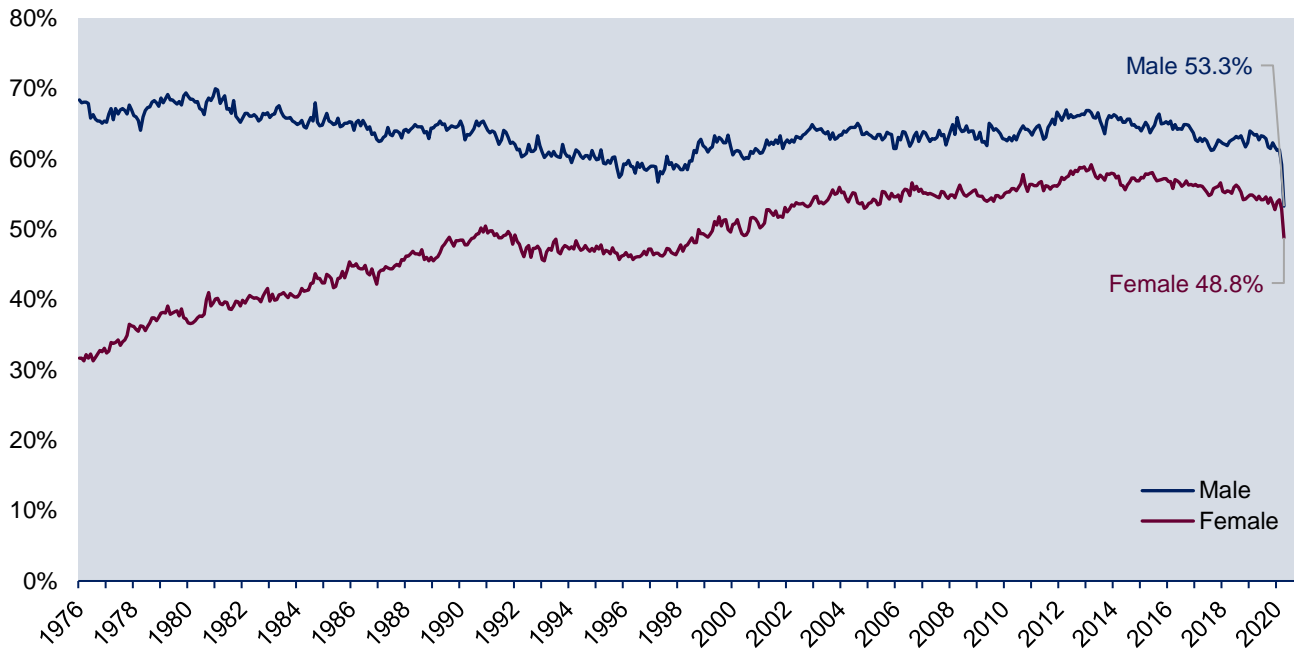


Source: Statistics Canada. Table 14-10-0287. Labour force characteristics, monthly, seasonally adjusted.

Author: **Dr Lynn Gambin**

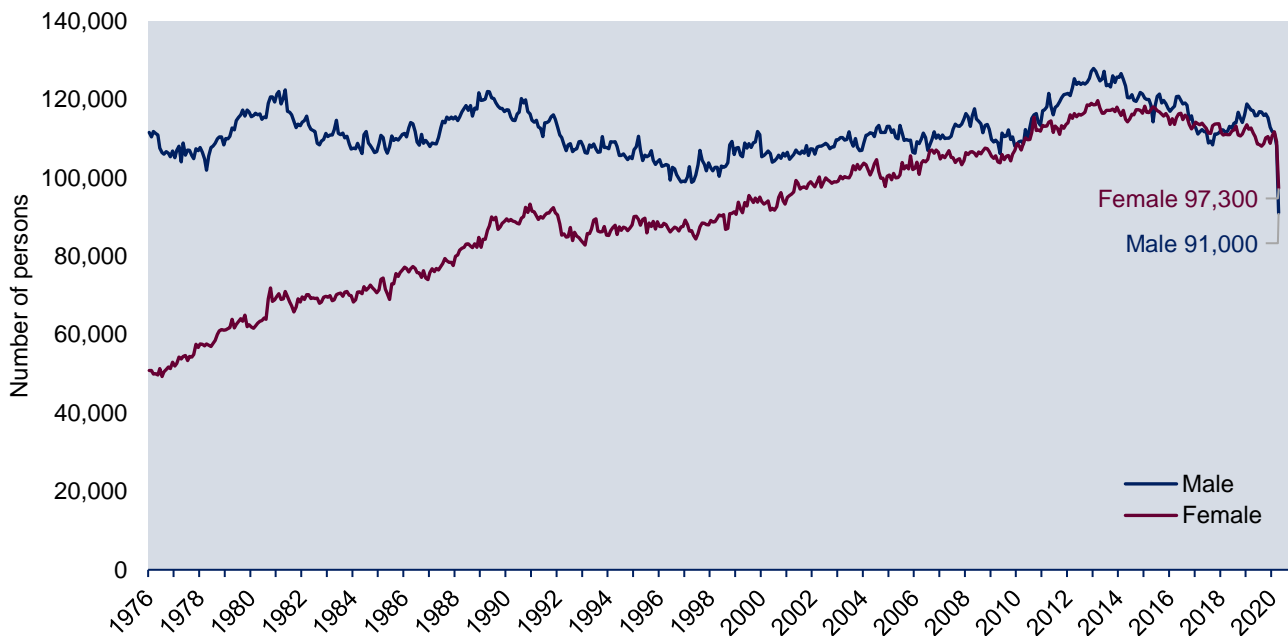
Note: All opinions expressed in commentary are those of the author and do not represent those of Memorial University of Newfoundland nor CARE.

Figure EX2: NL Participation rate (%) by sex, monthly, seasonally adjusted



Source: Statistics Canada. Table 14-10-0287. Labour force characteristics, monthly, seasonally adjusted.

Figure EX3: NL Employment level (number of adults age 15+) by sex, monthly, seasonally adjusted

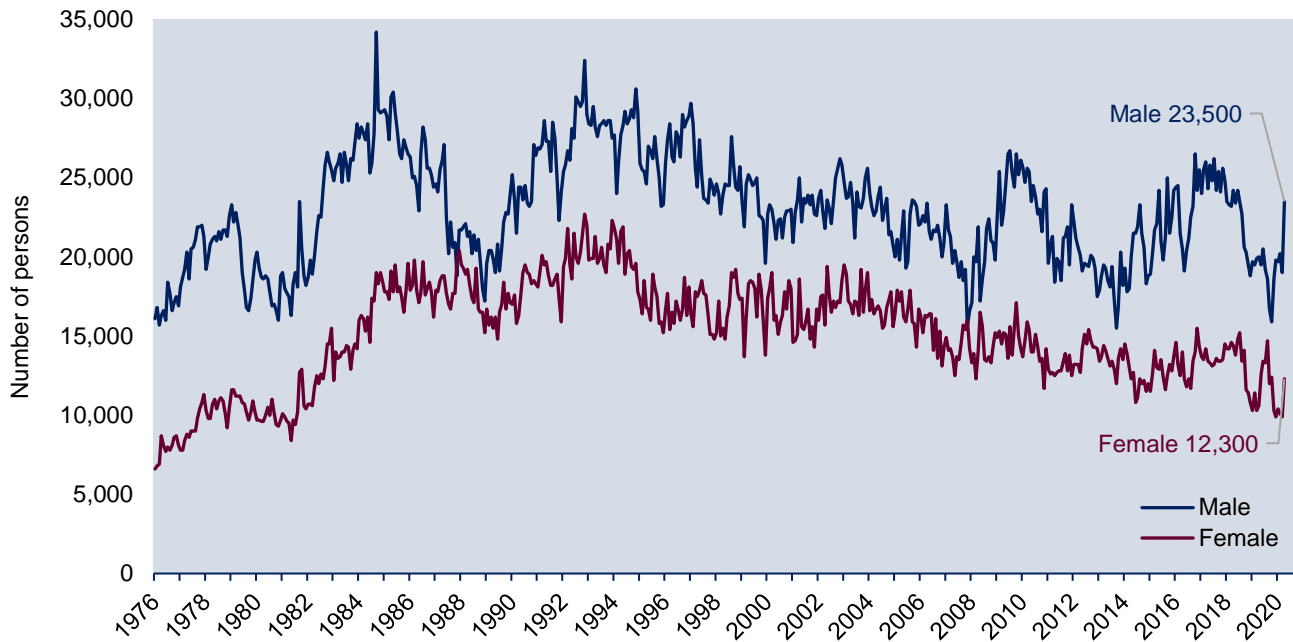


Source: Statistics Canada. Table 14-10-0287. Labour force characteristics, monthly, seasonally adjusted.

Author: **Dr Lynn Gambin**

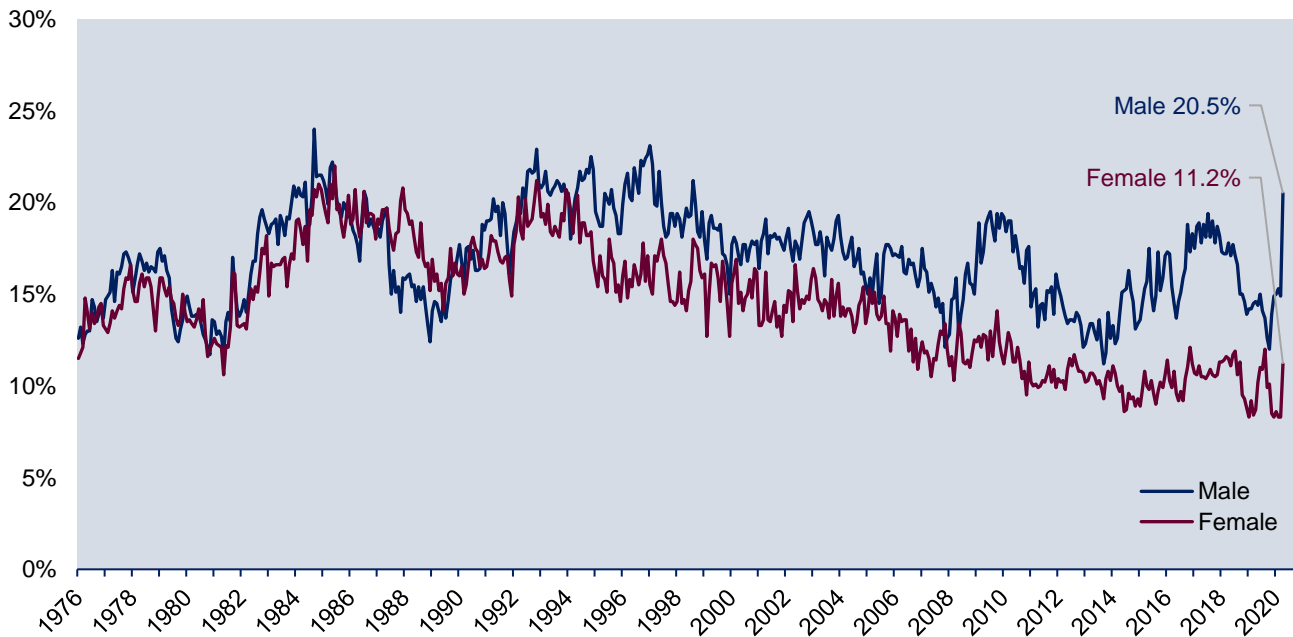
Note: All opinions expressed in commentary are those of the author and do not represent those of Memorial University of Newfoundland nor CARE.

Figure EX4: NL Unemployment level (number of adults age 15+) by sex, monthly, seasonally adjusted



Source: Statistics Canada. Table 14-10-0287. Labour force characteristics, monthly, seasonally adjusted.

Figure EX5: NL Unemployment rate (%) by sex, monthly, seasonally adjusted



Source: Statistics Canada. Table 14-10-0287. Labour force characteristics, monthly, seasonally adjusted.

Author: **Dr Lynn Gambin**

Note: All opinions expressed in commentary are those of the author and do not represent those of Memorial University of Newfoundland nor CARE.

