

THE LESLIE HARRIS CENTRE OF REGIONAL POLICY AND DEVELOPMENT

IMPACTS & HIGHLIGHTS

2021 REPORT

MESSAGE FROM THE ADVISORY BOARD CHAIR



Susan Hollett
Chair of the Harris Centre Advisory Board

01
Messages

05
Vital Signs

09
RAnLab

12
Knowledge
Mobilization

14
Scenario
Sessions

17
Other
Projects

03
Forecast NL

07
Thriving
Regions

11
Yaffle

13
Galbraith
Lecture

15
Research
Funds

The Harris Centre is a springboard and a well. It is a springboard of ideas, evidence, collaborations and theories, and a well of knowledge, expertise, vision, and leadership. At least that's how I think of it. And that's why I accepted the invitation to sit on the Advisory Board with my peers across the province.

The Advisory Board has the pleasure of supporting the good work of the Harris Centre by providing input and insight to its initiatives.

As you will see in this Annual Report, those initiatives are important and compelling to our development and growth as a province; the Harris Centre is a strong example of the importance of Memorial University in our society.

– Susan Hollett, Hollett and Sons Inc.
Chair, Harris Centre Advisory Board

MESSAGE FROM THE HARRIS CENTRE DIRECTOR

We're into our 18th year as the Harris Centre, and we've never seen anything quite like what we've seen these past 18 months! When the COVID-19 pandemic broke out in March 2020, the Harris Centre team adjusted to working from home, launching weekly "check-ins" to enable us to keep in touch with each other. Working together, we figured out what we needed to do to ensure the Harris Centre could continue to contribute to Memorial's mission of public engagement and our special obligation to the people of Newfoundland and Labrador. And we haven't slowed down since!

In 2021, we have advanced Forecast NL, which looks at the impact of climate change on our environment, economy, and society; we released the 7th edition of Vital Signs to much acclaim; the Thriving Regions Partnership Process has been actively engaged in three different regions in the province; RAnLab is supporting municipalities and Community Business Development Corporations (CBDCs) across NL; Yaffle is being upgraded; and so much more—as you will get to see in this report.

Informed by Memorial's new strategic plan, "Transforming Our Horizons," we are now consulting inside and outside Memorial on our direction for the next 5 years, including the celebration of our 20th Anniversary in 2024.

Thank you for your support over the past 18 years, and we look forward to many more!

— Rob Greenwood, PhD
Associate Vice-President, Public Engagement & External
Relations, Director of the Harris Centre



WHAT WE DO

The Leslie Harris Centre of Regional Policy and Development is Memorial University's bridge for connecting faculty, students, and staff with communities and issues around Newfoundland and Labrador.

Our primary focus is to contribute to the economic and social well-being of the province by connecting the people of NL to information relevant to the challenges we face—by bringing people, communities, organizations and government together, brokering ideas, sharing information and facilitating collaborations

It is our job to ensure that there is a strong and straightforward connection between what's happening in the province and what's happening at Memorial.



CHARTING A COURSE FOR THE FUTURE OF NL'S ECONOMY & SOCIETY IN THE FACE OF CLIMATE CHANGE

FORECAST NL

No one likes to talk about the weather more than Newfoundlanders and Labradorians, and in the face of rapid climate change, those conversations have become much more complex, and much more important.

Not only is climate change affecting our weather, but it's transforming our environment, shifting our economy, and reshaping how we live and work together.

What will be the impacts of climate change on our provincial economy? What impacts will it have on our society?

Over the past year, the Harris Centre's Forecast NL project has been leaning into these complex questions and asking: How can NL create economic and social prosperity while mitigating and adapting to climate change?

Throughout the Forecast NL discussions, we've been working behind the scenes to address our audience's ideas, turning their interests and recommendations into virtual seminars or interactive online content, and providing opportunities for education and discussion.



45

Citizen Forum Members

We invited demographically and regionally representative NLers to listen, discuss, and engage with experts to uncover solutions and ideas to tackle climate change in NL.

Forecast NL Steering Committee

Dr. Brad de Young
Bartlett Professor of Oceanography at Memorial

Dr. Mark Stoddart
Professor of sociology at Memorial

Abigail Poole
Psychology student and Indigenous representative

Dr. Joel Finnis
Climatologist and professor of geography at Memorial

Elizabeth Beale
Economist and former president of the Atlantic Provinces Economic Council

Ashley Fitzpatrick
Local journalist with an extensive history in reporting on the energy sector

Max Ruelokke
Former deputy minister and former CEO of Canada-Newfoundland and Labrador Offshore Petroleum Board

Dr. Ashlee Cunsolo
Interim Dean of the School of Arctic & Subarctic Studies at the Labrador Institute and climate change researcher

25

Organizational Representatives

connected through the Knowledge Mobilization Committee to help share information and expertise

Get Engaged:
harriscentreforum.ca/forecast-nl

"This is a topic that people are really passionate about, and Forecast NL is providing a unique forum for an exchange of experiences, ideas and opinions about climate change from people around the province. With issues like climate change, we really need everyone to understand what's at stake and what possible solutions and opportunities exist. We can't sit back and expect 'someone else' to address this—we need all hands on deck."

— Elizabeth Beale
Co-Chair of Forecast NL Steering Committee

**Stay tuned in
2022 for more
from Forecast
NL!**

FEBRUARY

"What's the forecast?" An Introduction to ForecastNL

"I think that just how fast these severe effects can come to be is very important!... This forum fuels me to push harder to make changes."

– Audience Member

MARCH

Climate Change in NL: Impacts & Actions

Panelists:
Dr. Joel Finnis (Geography, Memorial),
Dr. Ashlee Cunsolo (Labrador Institute), &
Ashley Smith (Fundamental Inc.)

APRIL

Dollars & Cents: The Economic Impacts of Climate Change

Panelists: Kieran Hanley (NEIA), Dr. Deatra Walsh (MNL), & Elizabeth Beale (Economist, APEC)

MAY

Focus North: Labrador at the Front Lines of Climate Change

Panelists: Derrick Pottle (Inuit hunter, artist & culturalist), Abigail Poole (Psychology grad student, Memorial), Stanley Oliver (Nunatukavut Member of Citizen Forum), & Jodie Ashini (Cultural Heritage, Innu Nation)

"I really appreciated this important context being given to climate change as it truly will impact marginalized folks first and more heavily."

– Audience Member

MAY

Climate Change & Our Society

Panelists: Dr. Barb Neis (Sociology, Memorial), Dr. Mark Stoddart (Sociology, Memorial), Megan Samms (Artist & Farmer), & Josh Smee (FoodFirstNL)

NOVEMBER

Clean Tech: Beyond the Buzzwords

Panelists: Ashley Noseworthy (Edgewise Environmental), Dr. Lesley Anne James (Engineering, Memorial), & Josh Green (MYSA)

Renewables & The Future of Energy

January 2022

OCTOBER

Oil & Gas in Newfoundland and Labrador

Over 500 views!

Panelists: Dr. Angela Carter (U of Waterloo) & Max Ruelokke (Engineer)

OCTOBER

Oceans & Fisheries in the Face of Climate Change

Panelists: Dr. Brad deYoung (Oceanography, Memorial), Cyr Couturier (Marine Institute), Dr. Erin Carruthers (FFAW), and Dr. Mariano Koen-Alonso (DFO)

"My favourite part was hearing the experts talk about the work they are doing in communities within their respective fields. It fills me with hope to know there are passionate professionals thinking about these things and taking action in many different sectors."

– Citizen Forum Member

685+

total live attendees

and over 1200 views on YouTube!

Missed the session? Watch online!

VITAL SIGNS:

TAKING ACTION AND SPARKING CHANGE

For the last 7 years, Vital Signs has provided us with an opportunity for annual reflection: it encourages us to think about what the most pressing issues have been, explores what is changing, and highlights some of the interesting and innovative things people are doing in our province.

Given all that has happened in our province (and the world) over the past two years, there has never been a more critical time for us to think hard about all that has changed, and what the future holds.

A partnership between the Community Foundation of Newfoundland and Labrador (CFNL) and the Harris Centre, Vital Signs pulls together statistics and infographics, expert explanations and insights, as well as stories that help us see the full picture of what is going on in our province. Through a unique partnership with Saltwire Networks, (the publisher of most of the province's newspapers, including The Telegram and a series of community papers), NL's Vital Signs report is not only distributed online, but to homes and businesses across the province.

The exceptional reach of Vital Signs enables us to facilitate informed discussion, fuel civic engagement, and spark innovative ideas—around kitchen tables and boardroom tables alike.

"Since we didn't produce a report in 2020, we really had a lot of information we wanted to include in this latest edition," said Cathy Newhook, the Harris Centre's Manager of Engagement and Communications, and lead for the Vital Signs project. "We wanted to tell the story of what NL has been through over the last couple of years—the economic uncertainty, the drastic impact of the pandemic on everything from major industries to mental health, as well as the impacts of climate change on our economy, society and environment."

In addition to a review of the past two years, the publication also offers a much larger retrospective in a special centre-spread that looks at quality of life and economic indicators over the last 70+ years since Newfoundland and Labrador joined Canada.



Cathy Newhook
Manager,
Engagement &
Communications

2021 VitalSigns

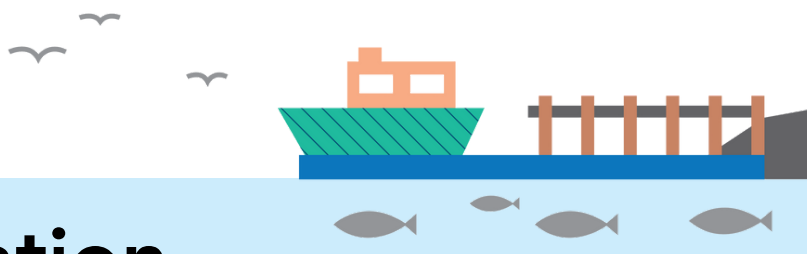
Easy-to-read statistics and stories
on quality of life in our province.



The positive response to the publication has been overwhelming. The report received significant attention through traditional media outlets, and earned positive attention through social media as well. But there have been a few specific responses that have really demonstrated the grassroots reach and impact of the project.

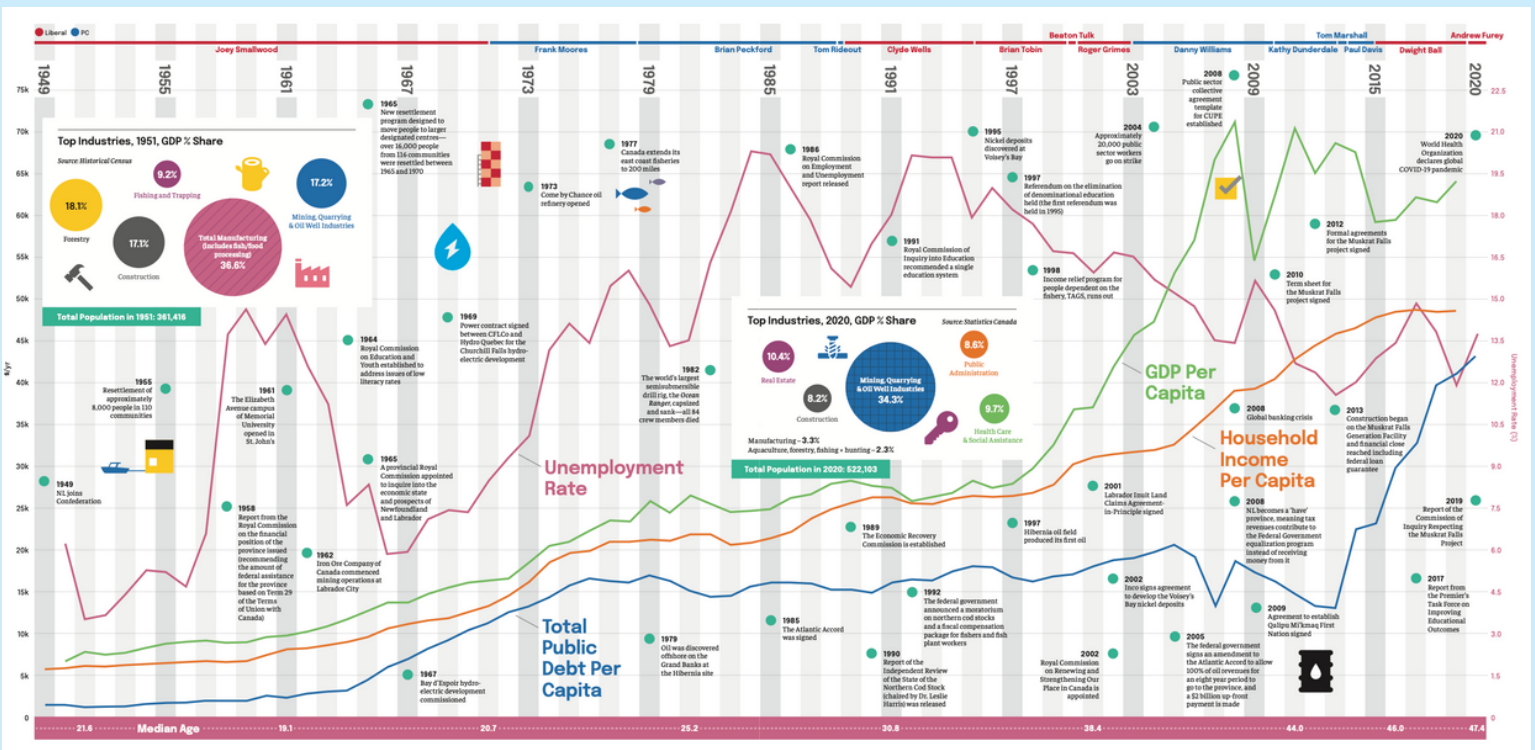
"The tweets and radio interviews are great and help us know that the information is making its way around, but it's the phone calls and emails that really hit home for me," said Dr. Greenwood.

"It's the calls like the one I received from a man in Bay D'Espoir, who heard about Vital Signs on the radio and wanted a copy mailed out to him, or the people you see reading it at coffeeshops and talking with their friend about things they've read in it, like the projected temperature changes in Nain due to climate change—that kind of grassroots reach is hard to measure, but that's where the real impact is."



NL Since Confederation

The centrespread of the 2021 edition of Vital Signs shows socio-economic indicators for NL since 1949.



"The NL since 1949 centre-spread is a project that we've been stewing for a long time. But considering the current economic situation in the province, the pandemic and the challenges that lie ahead, we felt it was the perfect time to take stock and gain some perspective as we forge ahead—and the response we've had to this year's edition certainly indicates that others have felt the same way."

- Rob Greenwood, PhD, Director of the Harris Centre

www.mun.ca/harriscentre/vitalsigns/

You can read the full report on our website, or you can contact us and we'll get you a hardcopy.

CONNECTING REGIONS WITH RESEARCH

THRIVING REGIONS PARTNERSHIP PROCESS (TRPP)

Facilitating, collaborating, convening: a large part of the Harris Centre's mandate is to bring people together and mobilize Memorial's research capacity to help the province.

Sometimes this means we bring people together to talk about a particular topic or relevant issue, and sometimes we meet with them to discuss what's happening in a certain area or region of the province: what challenges are being faced, and how can the expertise and resources at Memorial help?

"Getting people from different communities in a room together to talk about what they have in common, what unique strengths they have as a region, and what challenges they're wrestling with—that's what the Thriving Regions Partnership Process was designed for," explains Bojan Fürst, Manager of Knowledge Mobilization and lead for the program. "For many regions, this is the first opportunity they've had to come together and talk about their region collectively in a long time."

But the conversation doesn't end there. After this first meeting, the team comes back to Memorial, with the locally identified priorities from the region, and they begin looking for Memorial researchers who can help shed light on the issues: they mobilize Memorial's research capacity to address the needs of the region, while building meaningful research partnerships in the process.

Researchers are asked to submit a simple letter expressing their research interests within one of the priority areas local residents identified for their region. An evaluation committee made up of residents from the region along with volunteers from academia select three potential projects.

The three selected researchers are then introduced to the residents of the regions at a second workshop where they refine their projects in collaboration with the community members.

Dale Jarvis,
NL Heritage
Foundation



Preserving Cultural Heritage in a Thriving Baccalieu Trail

A recent TRPP session took place in the Baccalieu Region

When Mr. Dale Jarvis (Adjunct Professor, Department of Folklore, and NL Heritage Foundation) realized that there were sets of skills in communities across NL that were at risk of being lost as the population of our province ages, he decided to capture them in a detailed report.

In his report, Mr. Jarvis emphasizes the economic assets that exist in communities from the Baccalieu Region, such as boat-building knowledge and basket-weaving, which can be used to support tourism and other relevant industries in the area.

Ms. Natalie Dignam (Graduate Student, Department of Folklore) then featured these stories on her podcast, "Living Heritage," with eight episodes dedicated to this region. Guests shared information about their skills as well as other cool stories about their community.

"It works for everybody. The community gets something tangible and practical, and the researcher gets to keep researching."

– Bojan Fürst, Manager,
Knowledge Mobilization

A map of these stories and places
can be found on their Intangible
Cultural History blog!

Newfoundland and
Labrador's heritage



www.ichblog.ca/p/podcast.html



Natalie
Dignam,
Graduate
Student, Dept.
of Folklore

"This type of research helps bring cohesion between everyone. You want to establish a good relationship with people and show that you want to help them cope with problems they may have. That's going to be extremely rewarding in the end."



Baie Verte Peninsula:

Assessing Potential for Land-Based Production of Green Sea Urchin Roe

Dr. Patrick Gagnon,
Department of Ocean Sciences, Faculty of Science



Southwest Coast:

Lights... Camera... Grow!
Documenting a Teaching Farm

Dr. Paul de Decker
Department of Linguistics, Faculty of Humanities & Social Sciences



Northern Peninsula:

Impacts of Canada-EU Comprehensive Economic Trade Agreement on Sustainability of Northern Tip Coastal Communities

Jack Daly,
Department of Geography, Faculty of Humanities & Social Sciences



PROJECTS AND PEOPLE

Thriving Regions Research projects are underway around the province with faculty, students & community members working together to find innovative solutions to regional issues.

"These sessions are a great opportunity to sit down with people from the area, of different backgrounds, and brainstorm what they think the area needs. I was born and raised in Baie Verte and I work here, so there's a personal and professional attachment, and [these projects] help us with making our region sustainable."

Jordan Cramm, Anaconda Mining, Baie Verte, Community Participant



REAL SOLUTIONS FOR REAL PEOPLE IN REAL COMMUNITIES

"The Thriving Regions process is really a great addition, because it helps us actually identify some opportunities in our region where we can engage the general public and revitalize and kickstart our region. We believe great things will come of it!"

Diane Hodge-Burt, executive director, CBDC Trinity-Conception



Burin Region:

Protecting Atlantic Salmon Aquaculture Production from Climate-Related Challenges Through Diet Manipulation

Eric Ignatz, PhD Candidate,
Department of Ocean Sciences, Faculty of Science

Northern Peninsula:

Grenfell's Gardens: Researching, Restoring & Re-telling the Story

Dr. Greg Wood,
Faculty of Education & Grenfell Campus



Baccalieu Trail:

A Watershed Approach to Develop a Foundation for Design and Planning of Sustainable Development & Municipal Infrastructure in the face of Climate Change

Dr. Joseph Daraio, Civil Engineering, Faculty of Engineering & Applied Science

MAKING DATA MAKE SENSE

REGIONAL ANALYTICS LABORATORY (RANLAB)



As a relatively small place, with a relatively small population, data that paints an accurate picture of Newfoundland and Labrador can be hard to come by. However, finding that data, interpreting its meaning, and putting it in the hands of the right people is exactly what the Regional Analytics Lab (RAnLab) is designed to do.



RAnLab provides demographic and economic information that recognizes the specific geographic and regional nature of the province. RAnLab is doing something that is not being done anywhere else: using modeling and analysis to examine and project impacts and changes in demographics, labour supply, service demand at a regional and community level.

WHAT IS
RAnLab?

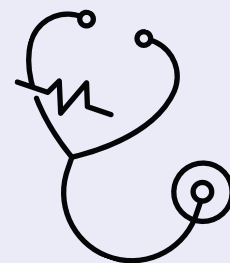
NEW
PROJECTS

DATA FOR HEALTH CARE

Over the last several months, RAnLab was happy to contribute to the Health Accord NL Task Force. Under strict data protection protocols, RAnLab was able to analyze provincial health data and provide advanced data analytics and modelling, and offer critical insight for the members of the Task Force.

"RAnLab's work on hospital utilization was very helpful as the Health Accord NL grappled with action plans to improve the sustainability of the province's health system. The capacity to integrate data over the past 10 years and to project future utilization of various hospital services was particularly important."

- Dr. Pat Parfrey, Faculty of Medicine



"DATA TO DECISIONS" WEBINAR SERIES

In partnership with the Future Skills Centre, RAnLab recently launched a special webinar series. Aimed at providing best practices on finding and using data, the "Data to Decisions" series is the perfect learning series for people working at the community level.

Missed a session? You can find the recording on the Harris Centre website.



Workforce Overview

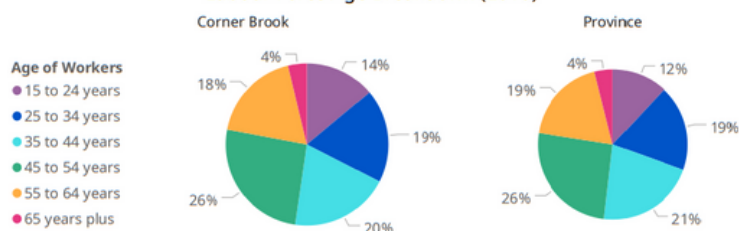
Corner Brook

The composition of workforces vary considerably across the province. Areas with relatively more older workers may face greater challenges in attracting or retaining replacements, while those with more high-skilled workers may be better positioned for adapting to shifting technology and skills.

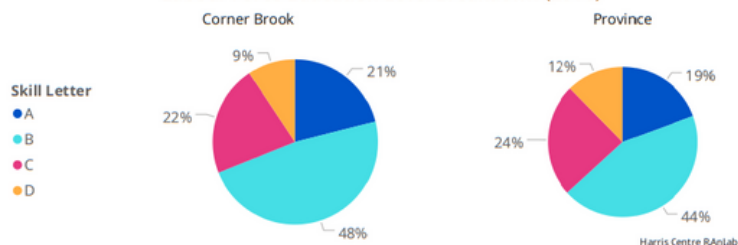
In this case, skills are based on Statistics Canada definitions where:

- [1] **Skill A** refers to a class of workers and related occupations that have a university education,
- [2] **Skill B** refers to those workers whose education and training is primarily obtained through colleges and apprenticeships,
- [3] **Skill C** includes workers who have a high school education that is associated with some occupation specific training and
- [4] **Skill D** jobs are related to on the job training whereby the workers may or may not have completed high school.

Labour Force Age Breakdown (2016)



Labour Force Education Level Breakdown (2016)



Data Source: Statistics Canada, 2016 Census of Population, Statistics Canada Catalogue no. 98-400-X2016365

BIG DATA, BIG IDEAS: A PROJECT BASED ON COMMUNITY DRIVE ANALYSIS FOR REGIONAL ECONOMIC DEVELOPMENT

Recently, RANLab collaborated with Municipalities Newfoundland and Labrador (MNL) to bring data to the more remote regions of the province through the creation of community fact sheets. These community factsheets—entitled "Big Data, Big Ideas: A Project Based on Community Driven Analysis for Regional Economic Development"—allow municipalities of NL to understand themselves better through local data.

The fact sheets provide communities with very specific statistical information, as well as guides on how to read and interpret this information, so that they can use it in their own policy development and planning.

“

One of the biggest challenges for communities is the availability of data that accurately reflects their reality. So often the information is only available at a provincial level or national level; if you take that information and try to apply it to your own region, you quickly realize that it paints a very inaccurate picture. Our goal is to provide communities with local data that they can use to make better decisions.

— Jamie Ward, RANLab Manager

”



496
fact sheets

Crafted basic fact sheets with baseline demographic and economic data

Determined what issues communities were interested in

Met with community representatives—such as mayors, town clerks, municipal planners, etc.

Crafted customized fact sheets with data on local housing markets and labour force skills in communities and regions.

31
municipalities

MAKING ONLINE COLLABORATION A LITTLE EASIER

YAFFLE

Imagine if there was a tool that could connect research from the university with the public; that could enable collaboration between academics and community experts; that made it easy to quickly locate the latest new research, learn about innovative projects, and help you grow your network.

The Harris Centre started making this tool a reality over a decade ago with Yaffle, its web-based connection and knowledge mobilization platform. Yaffle helps link research from the university with community members: it connects Memorial's researchers with community organizations and projects, makes it easier for grad students to find supervisors, and enables the media to find the experts they need for interviews and other promotional pieces.

Yaffle is currently under the direction of Kim Crosbie, Manager of Strategic Operations & Special Projects, and Mandy Strickland, Yaffle Project Coordinator. With recent upgrades, strategic redevelopment, and a move to "The Cloud," even more users are now able to take advantage of all that Yaffle offers, and the Yaffle platform can be more easily shared with their institutions.

So far, Yaffle is being piloted in one other institution, Bishop's University, and further instances of Yaffle have been requested from other institutions across Canada.

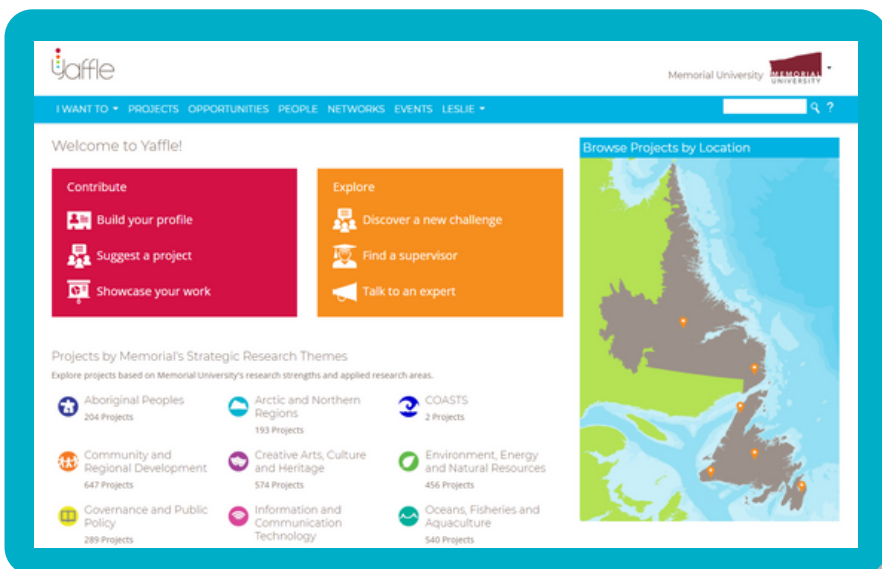
2 institutions have their own Yaffle



Kim Crosbie, Manager, Strategic Operations & Special Projects



Mandy Strickland, Yaffle Project Coordinator



"Aðskilin við Fæðingu" [Separated at Birth]: Reflections on Agriculture in Iceland and NL



In this Yaffle Connects session, Dr. Ivan Emke (Honorary Research Professor) considered the various similarities between Iceland and NL (geography, climate, history, traditional culture, etc.), and contrasted these places with how different they are in their agricultural outcomes.

Too Many Pills: Deprescribing for Health



Dr. Cathy Balsom, a clinical pharmacist at Memorial's Medication Therapy Services clinic, at the School of Pharmacy, presents her experience with deprescribing medications; that is, taking away an unnecessary medication, reducing its dose, or switching to another, less harmful drug. The Medication Therapy Services clinic is a public engagement outcome of the School of Pharmacy.



Buying-In: How Values-Based Procurement Can Help Build Healthy Local Economies

This Yaffle Connects featured Ron Johnson (Vice President, Information Services & Rural Health) and Deanne Piercy (Associate Director, Strategic Procurement, Financial & Administrative Services, Memorial) as they examined the potential opportunities & practicalities of value-based procurement approaches.

"Being part of the Yaffle pilot will strengthen our network in the field of KMB, and offer resources to our faculty and students, while supporting the local community. Yaffle will be a great tool to showcase the research done at Bishop's to the internal Bishop's community, as well as the outside world."

- Raphaëlle Mercier Gauthier Research Officer at Bishop's University

The Yaffle pilot projects were made possible thanks to ongoing funding and support from Research Impact Canada.

YAFFLE CONNECTS

Yaffle Connects provides a casual and friendly café-style format for researchers, community groups, and individuals to present ideas, projects and research of interest—it's essentially the 'live' version of Yaffle.

The focus of this format is to build connections, broker collaborations, and share ideas.

Since its inception in Spring 2019, there have been five Yaffle Connects events, all of which were broadcast live and recorded for future viewing. Although we had to pause these events when the pandemic started in early 2020, we hope to bring them back in the near future!



Women on the Water: Challenges and Opportunities for Women in the Maritime Sector

For this Yaffle Connects session, we were joined by four women—Kimberley Orren, Jasmine Paul, Nicole Power, and Crystal Hanlon—involved in NL's fishery. They provided us with a closer look at the challenges and opportunities facing women in the maritime sector.



Study & Stay: Making NL Home for International Students

The Atlantic Canada Study and Stay initiative is a new program aimed at building partnerships helping students create a future in NL where through innovative and entrepreneurial experiences. Program Coordinator Ying Zhang gave us a closer look at the challenges and opportunities facing international students who wish to make NL their home after graduation.

KNOWLEDGE MOBILIZATION

Knowledge Mobilization: Putting research into the hands of people who can use it, in a way that makes sense



RURAL ROUTES PODCAST

Created and produced by the Harris Centre's Manager of Knowledge Mobilization, Bojan Fürst, Rural Routes took a deep dive into rural issues on a global scale. Interviewing experts from around the world, the podcast highlighted research and researchers

from inside and outside academia, and brought Memorial University and the Harris Centre to an international audience with more than 40 episodes over three seasons and 24,000+ downloads from 50 different countries.

Rural Routes began as a partnership project with Rural Policy Learning Commons, an initiative under the Canadian Rural Revitalization Foundation (CRRF), and received funding from the Social Sciences and Humanities Research Council of Canada (SSHRC).



Canadian Rural
Revitalization
Foundation

NATIONAL AND INTERNATIONAL NETWORKS

The Harris Centre participates in national and international research and knowledge mobilization networks to facilitate cross-jurisdictional learning and increase awareness and reach of Memorial-led research related to regional development and public policy. Here are just a few examples of activities and projects undertaken with our national and international partners.

International Small Islands Studies Association (ISISA)

In June 2021, the Harris Centre hosted the 2021 virtual conference, with over 100 participants from 10+ countries.



University of the Arctic

UArctic is a network of universities, colleges, research institutes, and other organizations concerned with education and research in and about the North. The Harris Centre facilitates Memorial's role within UArctic, and plays a key role in UArctic's presence in Canada.



Reti: Excellence Network of Island Territories

The Harris Centre hosted the 2018 Reti Symposium.



GOVERNING THE ECONOMY: EXPLORING THE ROLE OF POLITICS, CRITICS AND CULTURE IN A TIME OF ECONOMIC CRISIS

THE GALBRAITH LECTURE

The John Kenneth Galbraith Lectureship in Public Policy is a platform usually reserved for one nationally or internationally renowned speaker to provide insight into the major issues of the day; however, the fiscal crisis currently faced by NL is clearly an issue that requires insight from more than one perspective.

This was the thinking this past June, when the Harris Centre assembled a panel of experts to take a hard look at the province's fiscal situation, how we got there, and where we go from here.

In a 90 minute online public forum, the panel tackled questions like: How does the action of government impact our economy? How are key decisions about our economy decided? What's the role of the public service? And what needs to be done to improve our ability to make decisions about our economy and how we govern it?

"The future of the province hinges less on economic opportunities, and more on the willingness of people to seize those opportunities."

Dr. David Freshwater

"The province has enormous potential to both contribute to and be a part of the revolution we're seeing at the moment on the environmental and climate change side, and also on the technological side."

Elizabeth Beale

It's important that citizens have access to information...The government should operate in more transparent processes...We're making bad decisions because we don't give the information the public needs to the citizens, so the citizens can make informed choices."

Dr. David Vardy

"Change is inevitable at this point; it can either be chosen or it will be imposed."

David Cochrane

"We need to convince people that they are their government...We don't have to fight with our neighbors about it. To the extent that we disagree about policy, sure, but we don't have to get so sectoral that the wharf next door is our enemy. We can work on this together and we can find some common goals."

Dr. Kelly Blidook

Read the summary
or watch the full
recording on the
Harris Centre's
website

PANELISTS

Elizabeth Beale

Economist and former
President and CEO of
the Atlantic Provinces
Economic Council

Dr. Kelly Blidook

Political scientist and
professor at Memorial's
Faculty of Humanities
and Social Sciences

Dr. David Freshwater

Professor Emeritus at
the University of
Kentucky and former
head of rural
development at the
OECD

Kay Riggs

Local rural business
executive, entrepreneur
and former regional
economic development
professional

Dr. David Vardy

Long-time senior public
servant in the
Government of NL,
including former Clerk
of the Executive Council

David Cochrane

National political
reporter and host for
CBC



NL ECONOMIC SECTORS IN RESPONSE TO COVID-19

SCENARIO SESSIONS

550+

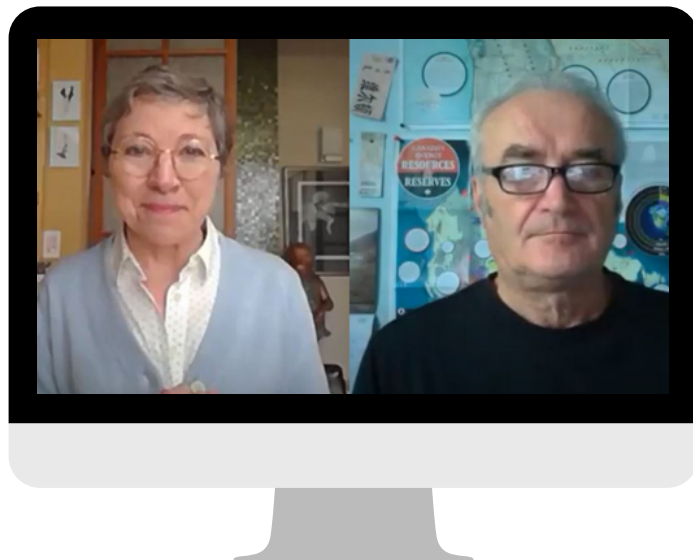
live attendees

1100+

views on YouTube

The COVID-19 pandemic and subsequent lockdown has had a tremendous impact on the economy and society of Newfoundland and Labrador. Certain industries were hit particularly hard, while others quickly learned to adapt and move forward. In May 2020, just weeks after the initial shutdown, there was little information available about how the local economy was managing; to fill this gap, the Harris Centre launched a special series of Scenario Sessions, in partnership with Conference and Event Services at Signal Hill Campus, which delved into the challenges and the opportunities facing firms, workers, and sectors in NL, as the pandemic changed the way we work and live.

In each webcast session, Dr. Rob Greenwood spoke with local experts related to specific sectors and industries in NL to discuss the impact COVID-19 has and continues to have on the province's economy.



Episode 1: Business

We spoke with Dr. Tom Cooper (Faculty of Business) and Kay Riggs (VP, Dynamic Air Shelters) about how local businesses are responding to the global crisis, and what that response means for the future of the NL economy.

We spoke with Zita Cobbs (CEO, Shorefast) & Cathy Duke (CEO, Destination St. John's) about how companies were preparing for a bleak summer tourism season, & about possibilities for innovation & adaptation.

Episode 2: Tourism

Episode 3: Mining

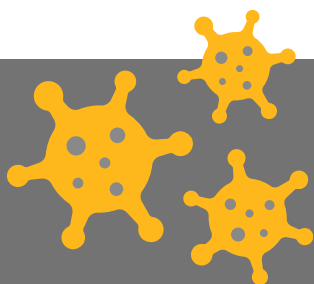
We spoke with Dr. Derek Wilton (Faculty of Earth Sciences, Memorial) and Ed Moriarity (Mining Industry NL) about the impact COVID-19 was having on the mining industry in NL.

Robert Woolgar (Growler) and Ashley Smith (Fundamental Inc.) joined us to talk about the opportunities for green tech in NL and the impact they saw on their industry from COVID-19.

Episode 4: Clean Growth

Episode 5: Fishery & Aquaculture

We spoke to Dr. Laura Halfyard (Connaigre Fish) and Kevin Anderson (Marine Institute) about the impacts of COVID-19 on the fisheries and aquaculture industries in NL.



"It's easy to become bogged down in all the challenges, but entrepreneurs in this province never waste a crisis, and you can really see that in the way people are responding with innovation and ideas."

—Dr. Rob Greenwood

APPLIED RESEARCH THAT BENEFITS NL FUNDED RESEARCH

Each year, the Harris Centre provides funding for applied research in a variety of areas related to public policy and regional development. In addition to the Thriving Regions Applied Research Fund, we also have a solid waste management research fund in partnership with MMSB (Multi-Materials Stewardship Board) and a fund focused on employment diversity in the natural resource sector (funded by the West White Rose project). The common theme is that all funded projects must have a practical application to Newfoundland and Labrador.



RESEARCH PROJECT The NL Natural Resource Employment Diversity Scorecard

Working with Anaconda Mining to develop a diversity scorecard system that can be used to assess and evaluate diversity indicators across phases of the employment life cycle.

*Dr. Christiane Spitzmueller
& Judah Adeyini
Faculty of Business
Administration*

RESEARCH FUND

West White Rose Employment Diversity Research Fund

RESEARCH PROJECT

Improving Labour Force Participation & Labour Market Outcomes of the Under-Represented Groups in the NL Natural Resources Sector

Working with the Association of New Canadians (and other community partners) to develop strategies to increase the participation of under-represented groups in the NL natural resources sector.

*Dr. Tony Fang
Department of Economics
Collaborator: Association for New
Canadians*

RESEARCH PROJECT Enhancing Employment of People with Disabilities in NL's Oil & Gas, Mining, & Renewable Energy Sectors

Working with Inclusion NL on assessing needs, reducing barriers, and building disability confidence for employers in natural resources sector.

*Dr. Kim Cullen
School of Human Kinetics &
Recreation*

RESEARCH PROJECT

Volunteering for Wellbeing

Social Connection, Prosocial Behaviour, and Wellbeing Among Rural NL's Older Adults

*Dr. Daniel Nadolny
Grenfell Campus*

RESEARCH PROJECT

Accessibility & Sustainable Development:

Accessibility of Gros Morne National Park for Aging Persons and its Relationship with Sustainable Development of the Park and its Surrounding Areas

*Mayra Sanchez Alvarez,
School of Environmental Policy,
Grenfell Campus*

RESEARCH FUND Population Project Research Fund Partnership

As part of the second phase of our Population Project (a multi-year research project investigating the demographic challenges facing NL), the Harris Centre has partnered with the Aging Research Centre (ARC-NL) at Grenfell Campus to fund five research projects.

RESEARCH PROJECT

Community Supports For Early Dementia

Engaging Seniors with Early Dementia to Improve Awareness of and Access to Supportive Community Services: A Pilot Project in Three Areas of Eastern Newfoundland and Labrador

*Dr. Karen Parsons
Faculty of Nursing*

RESEARCH PROJECT

Understanding the Generation Gap

Attitudes of Young Adults from Rural and Non-Rural Communities towards Older Adults

*Dr. Leslie James Cake
Psychology, School of Arts &
Social Science, Grenfell
Campus*

RESEARCH PROJECT

Tourism Infrastructure for Seniors

Planning for Older Tourists: Infrastructure Provisions, Economic Development, and Gros Morne Tourism

*Dr. Daniel Nadolny
Psychology, School of
Arts & Science, Grenfell
Campus*



WHAT'S THE SCOOP ON ORGANIC WASTE?

A FRESH TAKE ON RESEARCH COLLABORATION

As part of the MMSB Waste Management fund, in 2021, the Harris Centre partnered with MMSB to hire a recent graduate to research organic waste management in the province.



Newfoundland & Labrador is among the last jurisdictions in Canada without a widespread composting plan. While efforts have been made by various organizations across the province, there are many opportunities to do more—and to do better.

The Harris Centre's MMSB Waste Management Intern, Laura McCardle—who received her Masters of Planning from Dalhousie University in 2020, with a focus in Municipal Climate Change Adaptation Planning—spends the majority of her time researching these opportunities. She splits her time between the Harris Centre and the MMSB, which allows the Harris Centre to collaborate with MMSB and develop a more effective partnership.

Ms. McCardle is currently focusing on organic waste management in NL, particularly from industrial organic waste sources.

This includes waste from industries such as aquaculture, mink farms, forestry, and so on.

Her research asks the questions: What opportunities exist to better manage and use this organic waste? And what do we need to do to make this happen?

So far, Ms. McCardle has interviewed over 25 stakeholders (from waste management experts to academics to NGOs, and folks at all levels of government) to ask them about the gaps in this area; these stakeholders also completed a survey about existing and potential organic waste utilization networks in their region.

Ms. McCardle hopes that her findings can help stakeholders begin to address the issues and challenges around waste management in ways that benefit the public.

RESEARCH FUND

MMSB Solid Waste Management Applied Research Fund

RESEARCH PROJECT

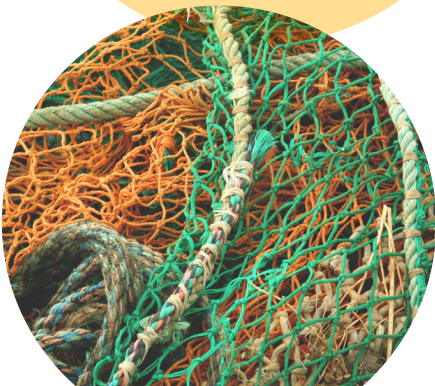
Feasibility of Recycling Nylon Fishing Nets

Assessing viable options for recycling plastic waste from fishing nets in NL

Dr. Lesley James

Faculty of Engineering and Applied Science

Collaborator: Memorial Centre for Entrepreneurship



RESEARCH PROJECT

Efficient & Economic Storage of Salmon Processing Waste

Researching ways to develop efficient preservation and storage methods to preserve the quality and freshness of fish materials (without additional costs)

Dr. Deepika Dave

Centre for Aquaculture and Seafood Development, Marine Institute

RESEARCH PROJECT

Engineered Soils from Local Waste Materials

Formulating engineered soils that use local organic waste in order to reduce the need for importing potting soil from outside the province

Dr. Adrian Unc

Division of Science, Grenfell Campus

OTHER PROJECTS & ACTIVITIES

In addition to our main programs, the Harris Centre undertakes many special projects throughout the year, related to public policy and regional development. Here are just a few!



NATIONAL RECOGNITION FOR THE HARRIS CENTRE DIRECTOR

On September 29, 2021 at the annual Canadian Rural Revitalization Foundation (CRRF) conference, the Harris Centre's own Dr. Rob Greenwood was inducted as a lifetime member of CRRF in recognition of his outstanding contribution to the betterment of rural Canada and CRRF/FCRR.

RESEARCH REPORT: Employer Attitudes Towards Hiring Newcomers and International Students in the Atlantic Provinces

Dr. Tony Fang, Dr. Jane Zhu, and Alex David Wells

This study investigated attitudes, perceptions, & experiences of employers in Atlantic Canada to better understand the opportunities & challenges associated with the integration of newcomers in the regional labour market.



RESEARCH REPORT: Immigration in Newfoundland and Labrador

Michael Clair

This report looks at the state of immigration in NL, arguing that: the province no longer has any choice about whether or not to accept more newcomers if it wants to sustain its population, and that newcomers are very likely to make the province a more desirable place to live.

REGIONAL DEVELOPMENT

Community Check-in Toolkit

We recently developed an assessment tool that encourages communities to have conversations about how they are doing, and to consider local, self-directed opportunities for solutions to any problems or concerns.

HOW ARE WE DOING AS A COMMUNITY?



HONEST BROKER Muskrat Falls Inquiry Public Consultation Process

In 2019, the Harris Centre was asked by the Commission of Inquiry Respecting the Muskrat Falls Project to facilitate and report on the public consultation portion of the Inquiry. Two public sessions were held, in addition to an online submission process, to receive public input. The Harris Centre's former Associate Director of Public Policy facilitated the sessions and drafted the summary report.



RESEARCH REPORT: Speak No Evil, Write No Evil: Exploring Chain-of-Command Communication and Documentation Practices in the NL Public Service

Dr. Kelly Blidook
Political Science
Faculty of Humanities & Social Sciences

KNOWLEDGE MOBILIZATION

MobilizeU: Knowledge Mobilization Course

The Harris Centre recently joined Knowledge Mobilization (KMb) colleagues at York University and the University of Winnipeg to create a KMb course to provide education that would encourage and enable non-specialists to engage with the public and extend the reach of their (and their university's) research to larger and broader audiences.



Small States and
Territories Journal Article:

**Financial Crisis, Governance
and Sustainable Island
Futures: Comparing Iceland
and Newfoundland and
Labrador**

Research Report:
**Governance in
Times of Crisis:
The Muskrat Falls
Case**

SPECIAL RESEARCH PROJECT: Sustainable Island Futures (SIF) Project:

This three-year project (funded largely by SSRHCC and led by UPEI's James Randall) brings together six representatives of small island states (Iceland, New Zealand, Mauritius, Palau, Cyprus, St. Lucia, & Grenada) & six representatives from non-sovereign, subnational island jurisdictions (Prince Edward Island, Newfoundland, La Réunion, Lesbos, Guam, & Tobago) to compare experiences and learn more about sustainable practices in social-political, cultural-artistic, economic, and environmental areas.

As part of SIF, the Harris Centre funded Memorial researchers Dr. Mark Stoddart & Dr. Cole Atlin to analyze the economic crisis created by the Muskrat Falls mega-dam project.

Memorial Presents
Panel Discussion:

**Icelandic Banking
Sector Collapse vs.
Muskrat Falls**

Featuring Iceland's
Asthildur Bernharðsdóttir

Research Report:
**Comparing Small Island
States and Subnational
Island Jurisdictions:
Towards Sustainable
Island Futures**

Dr. Stoddart &
Yixi Yang

Special Research Project: Reinvesting Fishery Profits for Economic and Social Development: A Case Study of the Northern Coalition

Dr. Keith Storey &
Ms. Meghan Eibner

REGIONAL DEVELOPMENT Nunatsiavut Community Profiles

At the request of the Nunatsiavut Government, our Northern Liaison, Shelia Downer, worked with the RAnLab team to develop Community Profiles for each of the Nunatsiavut communities. These profiles used statistical data and other information to create a picture of the communities that could help the government with service delivery and planning for the future.

This report is a case study of the Northern Coalition, a group of enterprises based in Canada's Eastern Arctic and on the Labrador coast, whose members have a mandate to reinvest the profits from income generated by their fisheries in their communities and regions. The project explores how profits from the shrimp and Greenland halibut fisheries have been used to diversify adjacent coastal regions for long-term economic and social sustainability.





www.mun.ca/harriscentre
harriscentre@mun.ca
(709) 864-3143