

Labnet/Wireless (Wi-Fi) Instructions Harlow Campus Residents

LabNet computers available for your use

There are three locations with computers for your use (you will need an active LabNet account):

Maltings (Library) – 8 computers

Cabot (Student Residence) – 2 computers

St. John's (Faculty Residence) – 2 computers (1 – instructor's use; 1 – classroom use)

Account Creation

LabNet accounts are created when you log in, (excluding guest accounts). In this case the first login may take longer than normal as the account gets created. Accounts may also be created ahead of time by going to <http://login.cs.mun.ca> and use your my.mun.ca (MUN Login) credentials. (Guests will be provided with a *guest* LabNet account).

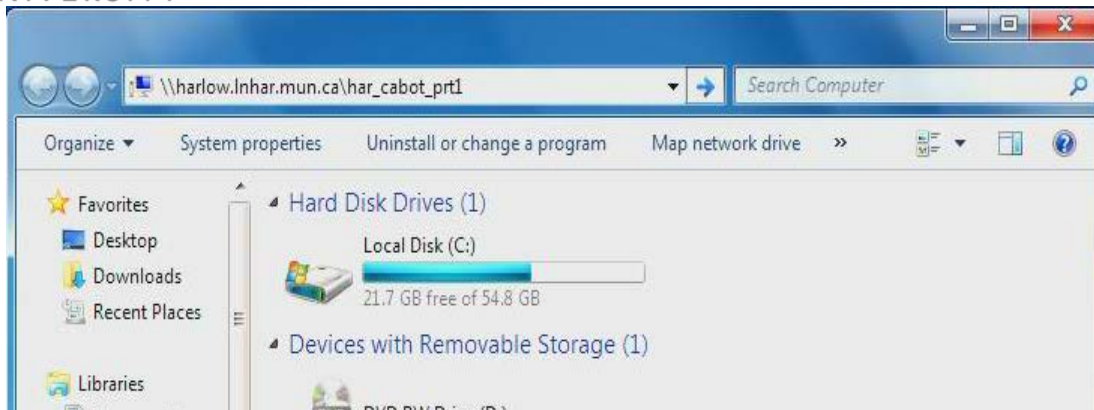
Connecting to wireless (Wi-Fi)

To use your personal device at Harlow you have two options to connect to Harlow's Wi-Fi. You can connect to Wi-Fi using your MUN ID credentials (if you are from St John's Campus this should connect automatically); or, if your Institute is part of the **eduroam** infrastructure, select the eduroam SSID and use your email address and password as the wireless credentials. (Guests will be provided with a *guest* wireless account).

Using your personal device for printing

You may print to the LabNet printers directly from the LabNet computers. Alternatively, you may print from your laptop computer, but first you must connect to the printer that you want to print to. Here are the steps: (screen shots are from Windows 7 but same procedure for Windows 8.1 and 10)

1. Open an explorer window by holding down your "Windows" key and pressing the "E" key.
2. In the address bar at the top of the window, type "\harlow.lnhar.mun.ca\har_lib prt1", "\harlow.lnhar.mun.ca\har_cabot prt1", or "\harlow.lnhar.mun.ca\har_fac prt1", depending on which printer you want to connect to, and then press Enter.



3. Then it will ask you to authenticate on the LabNet Domain. Type 'labnet\<whatever your username is>' in the username box and type <your LabNet password> in the password box, click the "Remember my credentials" checkbox, and click on OK to continue.

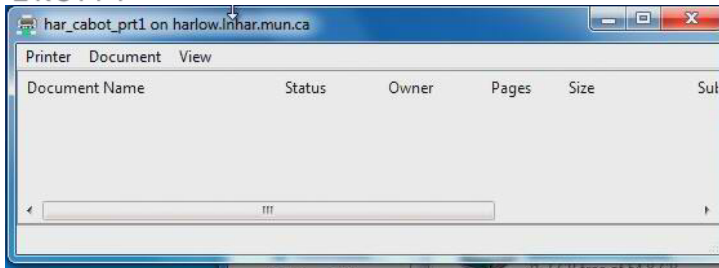


Domain/Network Authentication Window – example information inputted

After you have properly authenticated, it will ask you to confirm that you want the printer driver installed on your computer – Click "Install driver" otherwise you will not be able to print.



4. After the drivers are installed, the print queue window will pop up displaying any jobs that are waiting to be printed.



5. Now you can select this printer to print to.

Alternatively, PDF printing may be done without connecting to the printer by going to <https://webtools.cs.mun.ca/cgi-bin/cloudprint/index.py>.

Please note that all printing at the Harlow Campus is free to all residents.