



Memorial

University of Newfoundland

ACADEMIC PERFORMANCE PROFILE

Memorial University -- Fall 2005

Jennifer Porter
Centre for Institutional Analysis and Planning
CIAP Report 2006-02

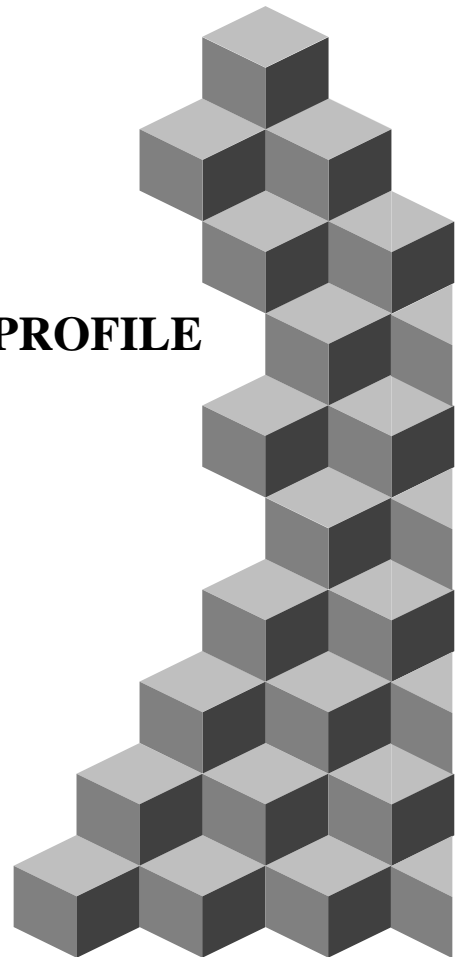


Table of Contents

1.0	Introduction	1
2.0	First Semester Profile of New Matriculants	1
2.1	Overview	1
2.2	High School Performance of Full-Time New Matriculants	1
2.3	Fall 2005 Semester Performance of Full-Time New Matriculants	2
2.4	Performance by Campus/Origin	5
2.5	Profile of Low Performing Students	6
2.6	Gender	7
3.0	Profile of Other First Semester Students	8
3.1	Overview	8
3.2	Profile by Categorical Entrance Type	8
4.0	Profile of Students Beyond First Semester	9
4.1	Overview	9
4.2	Faculty of Arts Performance Profile	10
4.3	Faculty of Science Performance Profile	10
4.4	Professional Schools/Faculties Performance Profile	11
4.5	Profile of Students Majoring in Pre-Disciplines	12
4.6	Profile of Students with Undeclared Majors	12
4.7	Profile of Majors at Sir Wilfred Grenfell College	13
4.8	Overall Summary	14

1.0 Introduction

Note: The general format and style of the Performance Profile report has been maintained to provide consistency. The Introduction is repeated from previous reports to ensure clarity for new readers.

After the conclusion of each Fall and Winter semester, the Centre for Institutional Analysis and Planning (CIAP) prepares an Academic Performance Profile report which presents an overview of students attending Memorial in a given semester. The main focus of these reports is the group of new matriculants who enter Memorial in the Fall of the year (June high school graduates from Newfoundland and Labrador). The profile summarizes information related to the academic performance of these students, and allows for comparison of cohorts from year to year.

The current report will examine the group of new matriculants who entered Memorial in the Fall of 2005 and their performance outcomes after their first semester. Other first time students and students who are beyond their first year of university will also be profiled in terms of their academic performance in the Fall 2005 semester. For consistency with previous Academic Profile reports, the numbers presented will refer to students who successfully completed full-time studies in the given semester.

Data used in this report were extracted from the Banner Student Administration System, and all variables are current as of January 31, 2006. This incorporates all end of semester grade changes received by the published deadline set by the Office of the Registrar.

2.0 First Semester Profile of New Matriculants

2.1 Overview

A total of 1,909 new matriculants from Newfoundland and Labrador completed full-time studies in Fall 2005 (up from 1,860 in Fall 2004). This accounts for 78.7% of all first-time, full-time students in the Fall semester.

2.2 High School Performance of Full-Time New Matriculants

The mean high school average for Fall 2005 new matriculants was 79.4%. This is slightly lower than the 79.9% average for the group of Fall 2004 students. Table 1 shows the number of students in each grouped category of high school average for the past three Fall semesters. The proportion of these students entering with a high school average of 90% or more has decreased over last year, now at 7.1% in Fall 2005, compared to 9.5% in Fall 2004 and 7.6% in Fall 2003. The proportion of students with high school averages less than 70%, continued to increase in Fall 2005 to 7.5% (compared to 5.9% in Fall 2004 and 4.0% in Fall 2003).

Table 1. High School Performance of New Matriculants Fall 2003-2005

Grouped Average	Fall 2005		Fall 2004		Fall 2003	
	#	%	#	%	#	%
< 70	142	7.5%	108	5.9%	76	4.0%
70-74.9	412	21.8%	374	20.3%	437	23.2%
75-79.9	468	24.7%	461	25.0%	515	27.3%
80-84.9	431	22.7%	429	23.3%	443	23.5%
85-89.9	306	16.2%	295	16.0%	270	14.3%
> 90	134	7.1%	174	9.5%	143	7.6%
Total	1,893*	100%	1,841*	100%	1,884*	100%

* High school averages for 16 Fall 2005, 19 Fall 2004, and 33 Fall 2003 new matriculants were not available. The number missing includes students who followed the International Baccalaureate program for which high school average is not available due to curriculum differences.

2.3 Fall 2005 Semester Performance of Full-Time New Matriculants

The mean term average for new matriculants in Fall 2005 was 65.6%, which is a decrease from the average of 66.2% obtained by the Fall 2004 group. Table 2 shows the number of students in each category of grouped first semester average for the past three years.

Table 2. First Semester Performance of New Matriculants Fall 2003-2005

Grouped Average	Fall 2005		Fall 2004		Fall 2003	
	#	%	#	%	#	%
< 45	95	5.0%	74	4.0%	98	5.1%
45-49.9	69	3.6%	80	4.3%	92	4.8%
50-59.9	390	20.4%	336	18.1%	401	20.9%
60-69.9	600	31.4%	636	34.2%	639	33.3%
70-79.9	564	29.5%	532	28.6%	529	27.6%
80-100	191	10.0%	202	10.9%	158	8.2%
Total	1909	100%	1,860	100%	1917	100%

The proportion of students obtaining a first semester average of 80% or better decreased slightly in Fall 2005 (10.0%) compared to the previous Fall semester (10.9%). The proportion of students obtaining less than 50% in the first semester remains low at 8.6%, as shown in Figure 1, however has increased 0.3% from Fall 2004.

Figure 1. Fall Performance of New Matriculants
(Percentage obtaining less than 50% in their first semester)

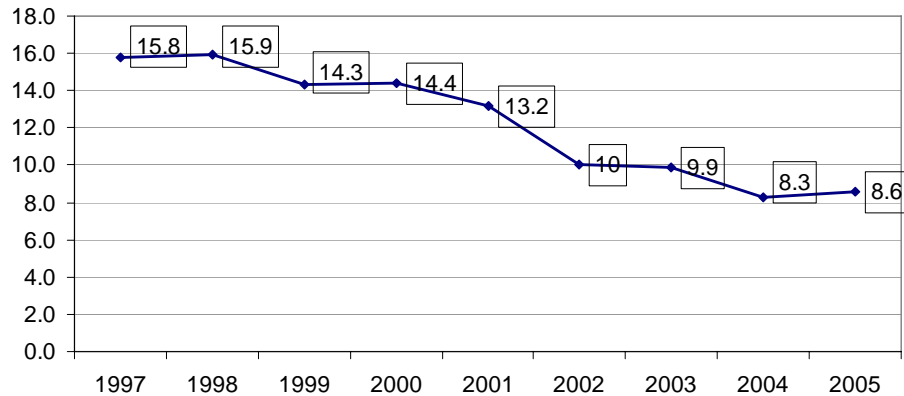


Table 3. Fall 2005 Performance of New Matriculants by High School Performance

High School Performance	Fall 2005 Performance						Total
	< 45	45-49.9	50-59.9	60-69.9	70-79.9	80-100	
< 70	32	20	58	30	2	0	142
70-74.9	43	34	161	136	36	2	412
75-79.9	16	12	118	216	104	2	468
80-84.9	2	3	45	148	214	19	431
85-89.9	0	0	7	60	164	75	306
> 90	0	0	0	5	40	89	134
Total	93	69	389	595	560	187	1,893*

* High school averages for 16 new matriculants were not available.

A cross-tabulation of Fall 2005 performance and high school performance for new matriculants is shown in Table 3. Out of those students with a high school average less than 70%, 36.7% did not obtain a passing term average in Fall 2005. For those students who entered Memorial with a high school average of 70% or better, only 6.2% achieved a first semester average of less than 50%. For those students who entered Memorial with a high school average of 90% or better, 66.4% had a Fall 2005 average of 80% or higher.

The number of courses attempted by new matriculants in Fall 2005 is shown cross-tabulated in Table 4 with the number of courses successfully completed. Most new matriculants, 91.6%, completed 3 or more courses successfully in Fall 2005. Of those students who attempted a “full” course load of 5 courses, 74.9% completed all 5 courses successfully. Only 1.5% of new matriculants did not successfully complete any of their courses (i.e., failed all courses attempted) in Fall 2005. This was an increase from the 0.9% among the Fall 2004 new matriculants. In contrast, 72.0% of new matriculants passed all the courses they attempted.

Table 4. Fall 2005 Courses Attempted and Courses Successfully Completed by Full-Time New Matriculants

Fall 2005 Courses Successfully Completed	Fall 2005 Courses Attempted				Total
	3	4	5	>5	
0	7	9	12	0	28
1	10	16	8	0	34
2	15	41	42	0	98
3	23	66	77	0	166
4	--	214	229	0	443
5	--	--	1,096	1	1,097
>5	--	--	--	43	43
Total	55	346	1,464	44	1,909

2.4 Performance by Campus/Origin

Table 5 displays the overall performance of new matriculants in both high school and first semester at Memorial according to the campus they attended. Within this table, students are further classified as ‘urban’ or ‘rural’ based on the postal code of their home origin.¹ Students attending the St. John’s campus were classified as ‘urban’ if the first 3 characters of their postal code were A1A-A1H, A1K, A1L, A1M, A1N, A1S, A1W and A1X. Students from the St. John’s campus with home postal codes other than these were classified as ‘rural’. Similarly, students attending Sir Wilfred Grenfell College were classified as ‘urban’ if their home postal code began with A2H or A0L, and as ‘rural’ if their postal code did not begin with these characters. The postal code definitions for ‘urban’ are those that have been used in the past by CIAP and are based on the address being within reasonable daily commuting distance of the St. John’s and SWGC campuses.

Table 5. Performance of New Matriculants by Campus and Origin

Campus/Origin		Students	High School Average	Fall 2005 Average
St. John’s	Urban	916	79.3	66.3
	Rural	666	80.0	64.6
	Sub-Total	1,582	79.6	65.5
SWGC	Urban	142	78.1	65.2
	Rural	144	77.5	65.0
	Sub-Total	286	77.8	65.1
Total		1,868	79.3	65.5

Note: 23 Centre for Nursing Studies, 15 Western Regional Hospital, 1 distance and 1 Marine Institute students are not included in the above Campus/Origin summary.

There was a slight difference seen in high school average between students at the St. John’s campus and students at the SWGC campus, averaging 79.6% and 77.8% respectively. While at the St. John’s campus, rural students performed better than urban students in high school, the opposite was true at the SWGC campus. Overall, students at the St. John’s campus had a slightly higher Fall 2005 semester average (65.5%) compared to the SWGC campus (65.1%). Within each campus there were differences in the performance of urban and rural students, with urban students performing slightly better than rural students in both cases. These trends are consistent with the findings of previous years.

2.5 Profile of Low Performing Students

¹ This is the postal code associated with their permanent address as listed on the Banner system.

At the end of their first semester, new matriculants were classified into one of two categories of academic standing. Students were designated an academic standing code of 'clear standing' if they achieved an overall semester average of 50% or higher, while students who did not meet minimum academic standards in their first semester (i.e., an overall average of 50%) were granted 'forgiveness'. Students with an academic standing of forgiveness following their first semester are permitted to return for a second semester, however if they again fail to meet academic standards they are then required to withdraw from the university for two consecutive semesters.

Table 6. Academic Standing after First Semester by High School Performance

Academic Standing	Grouped High School Average						Total
	< 70	70-74.9	75-79.9	80-84.9	85-89.9	>= 90	
Forgiveness	52	76	28	5	0	0	161*
Clear standing	90	336	440	426	306	134	1,732
Total	142	412	468	431	306	134	1,893**
2005 pass rate	63.3%	81.5%	94.0%	98.8%	100%	100%	91.5%
2004 pass rate	71.3%	79.4%	93.9%	97.0%	99.3%	100%	91.7%

* High school averages for 2 new matriculants were not available and one student less than 50% term average did not receive a forgiveness academic standing.

** High school averages for 16 new matriculants were not available.

Table 6 shows the number of students in each category of grouped high school average by their academic standing after Fall 2005. For students with a high school average less than 70%, 36.6% were granted forgiveness (an increase of 7.9% from 28.7% in Fall 2004). For students who entered Memorial with a high school average of 80% or better, 99.4% were in clear standing after their first semester. The overall pass rate for Fall 2005 was similar to that of Fall 2004.

2.6 Gender

Table 7 shows the grouped Fall 2005 performance categories, mean high school average, and mean term average by gender. Overall, females showed a higher mean average in both high school and first semester compared to males, and a lower proportion of them obtained Fall 2005 averages less than 50% (7.4% vs. 10.5%). Additionally, the failure rate for males has increased compared to what it was in Fall 2004 (9.7%, versus 10.5% in Fall 2005). Overall, first semester average and high school average for both males and females show slight decreases in Fall 2005 compared to Fall 2004.

Fall 2005 Performance	Females		Males	
	#	%	#	%
< 45	51	4.3%	44	6.0%
45-49.9	36	3.1%	33	4.5%
50-59.9	232	19.7%	158	21.6%
60-69.9	377	32.0%	223	30.5%
70-79.9	358	30.4%	206	28.1%
80-100	123	10.5%	68	9.3%
Total	1177	100%	732	100%
HS average	79.4%		79.3%	
Term average	66.3%		64.6%	

Performance by gender is further broken down in Table 8 by urban and rural origin. Females of both urban and rural origin continue to perform better than their male counterparts, and urban students in general show higher first semester averages than rural students, a pattern that's consistent with previous years. In Fall 2005, urban males and females showed a decrease in failure rate over the Fall 2004 group, whereas the failure rate for both categories of rural students increased. The failure rate for rural females went from 6.2% in Fall 2004 to 9.2% in Fall 2005. For urban females, the failure rate decreased from 9.1% in Fall 2004, to 6.3% in Fall 2005. However, rural males continue to have a higher failure rate than the other three groups, increasing from 12.1% in Fall 2004 to 14.6% in Fall 2005..

Table 8. Fall 2005 Performance of Male and Female New Matriculants by Origin

Gender	Urban		Rural	
	Fall 2005 Average	Failure Rate	Fall 2005 Average	Failure Rate
Female	66.7%	6.3%	65.4%	9.2%
Male	65.4%	8.1%	63.3%	14.6%

Note: 23 Centre for Nursing Studies, 15 Western Regional Hospital, 1 distance and 1 Marine Institute students are not included in the Gender/Origin summary.

3.0 Profile of Other First Semester Students

3.1 Overview

In addition to new matriculants from this Province, in Fall 2005 there were 517 other first semester students who completed full-time studies at Memorial. This group of students is diverse and for the purpose of this report they are categorized as previous matriculants from Newfoundland and Labrador (i.e., graduated from high school prior to 2005), new matriculants from outside the Province, mature students and other (including special admissions and combined high school program not graduating in 2005). For many of these students high school average is not available on Banner.

3.2 Profile by Categorical Entrance Type

The total number of other first semester students was up to 517 in Fall 2005, compared to 470 in Fall 2004 and 422 in Fall 2003. The overall semester average of these students was 62.5%, up from last years value of 61.0%. Table 9 presents grouped Fall 2005 averages by the entrance type of these other first semester students. The failure rate for these students was 16.0%, approximately the same as in Fall 2004 (16.2%). Of particular note is the fact that the failure rates for the mature and other categories exceed 30%.

Out of these groups, new students from outside the province had a higher term average (65.3%, compared to previous matriculants (64.4%), other entrance categories (56.8%) and mature students (54.1%)). Previous matriculants had a lower first semester failure rate (8.9%) compared to the other entrance categories.

Table 9. Performance in First Year by Entrance Type

Fall 2005 Performance	Outside Province		Mature		Previous Matriculants		Other		Total	
	#	%	#	%	#	%	#	%	#	%
< 45	19	7.0%	19	23.8%	7	6.2%	11	20.8%	56	10.8%
45-49.9	10	3.7%	7	8.7%	3	2.7%	7	13.2%	27	5.2%
50-59.9	50	18.5%	20	25.0%	23	20.3%	9	17.0%	102	19.7%
60-69.9	85	31.4%	16	20.0%	32	28.3%	12	22.6%	145	28.0%
70-79.9	76	28.0%	14	17.5%	42	37.2%	12	22.6%	144	27.9%
> 80	31	11.4%	4	5.0%	6	5.3%	2	3.8%	43	8.3%
Total	271	100%	80	100%	113	100%	53	100%	517	100%

4.0 Profile of Students Beyond First Semester

4.1 Overview

This section presents a summary of the performance of students who completed full-time studies in the Fall 2005 semester who were beyond their first semester of university. Students are categorized on the basis of their declared major. In keeping with practices established in the Memorial University Fact Book, students listing more than one major are categorized by their first major. For academic units that offer more than one distinct major, majors have been aggregated at the academic unit level in these cases. Students pursuing interdisciplinary majors have also been categorized with one single department. Students with a major of NA or Other are not included in this profile for consistency with previous performance reports. Transfer and exchange students are included in the group of beyond first semester students.

For each categorized group of students being profiled, the number of students, the percentage of females, the percentage of students not attaining minimum academic standards after Fall 2005 (a semester average of at least 50%), the mean Fall 2005 course load, the mean Fall 2005 average, and the mean overall (cumulative) average are presented in tabular form. Students who did not have a numeric average grade recorded on the Banner system for the Fall 2005 semester are not included in the calculations of mean term average.

4.2 Faculty of Arts Performance Profile

Table 10 shows a summary of Fall 2005 academic performance for students with a declared major in the Arts Faculty.

Table 10. Academic Profile of Faculty of Arts Majors by Department						
Department	Majors	% Female	% Low Achievers	Average Course Load	Fall 2005 Average	Overall Average
Anthropology	154	63.6	5.8	4.31	68.7	67.9
Classics	16	43.8	0.0	4.44	76.5	72.7
Economics	28	35.7	10.7	4.68	67.2	68.9
English	424	68.4	6.1	4.37	68.5	67.6
Folklore	34	88.2	5.9	4.35	67.4	65.7
French & Spanish	187	82.9	5.9	4.37	70.4	70.1
Geography	128	55.5	4.7	4.42	65.9	65.1
German & Russian	38	71.1	7.9	4.39	67.7	69.8
History	174	47.7	7.5	4.37	69.5	67.3
Linguistics	41	87.8	0.0	4.51	73.4	71.5
Philosophy	42	23.8	21.4	3.98	62.5	64.9
Political Science	155	44.5	9.0	4.41	66.4	67.1
Religious Studies	42	50.0	2.4	4.38	72.5	69.4
Sociology*	243	78.2	6.6	4.18	66.2	64.3
Fall 2005 Arts*	1706	64.3	6.6	4.34	68.2	67.3

* For the purpose of categorization, 26 students pursuing the interdisciplinary program with a major in Sociology and Anthropology are categorized here with the Department of Sociology. Four students with majors in Canadian Studies and Medieval Studies are not included in this table due to low numbers. To be consistent with the University Fact Book, all Geography majors have been categorized within the Faculty of Arts.

4.3 Faculty of Science Performance Profile

Table 11 shows a summary of Fall 2005 academic performance for students with a declared major in the Science Faculty.

Table 11. Academic Profile of Faculty of Science Majors by Department

Department	Majors	% Female	% Low Achievers	Average Course Load	Fall 2005 Average	Overall Average
Biochemistry	248	64.2	0.8	4.62	74.8	74.6
Biology	235	70.0	1.7	4.53	72.3	71.9
Chemistry	59	64.4	8.5	4.46	70.4	73.5
Computer Science	72	6.9	16.7	4.31	63.7	67.0
Earth Science	72	37.5	4.2	4.37	68.7	67.5
Mathematics	177	52.0	12.4	4.45	67.7	70.2
Physics	50	26.0	0.0	4.44	73.3	72.2
Psychology	311	74.5	2.0	4.45	75.0	74.1
Fall 2005 Science	1224	59.6	4.4	4.49	72.1	72.3

* There are 48 Geography majors registered in a Bachelor of Science degree who are not included in the totals above.

4.4 Professional Schools/Faculties Performance Profile

Table 12 shows a summary of Fall 2005 academic performance for students with a declared major in the Professional Schools/Faculties.

Table 12. Academic Profile of Professional Schools/Faculties Majors

Department	Majors	% Female	% Low Achievers	Average Course Load*	Fall 2005 Average	Overall Average
Business	759	54.1	2.9	4.98	70.9	70.8
Education	686	79.8	0.0	5.21	81.2	74.3
Engineering	568	20.4	2.1	4.86	71.9	72.7
Music	112	60.7	1.8	6.99	76.1	75.7
Nursing	789	92.0	0.4	3.83	74.9	71.6
Pharmacy	115	73.4	0.0	6.09	78.5	81.0
Physical Education	222	48.0	2.7	4.72	71.9	69.9
Social Work	125	90.4	0.0	4.46	79.8	74.3
Fall 2005 Professional	3376	64.4	1.3	4.81	74.9	72.6

* A typical full course load is higher than 5 courses for some of the professional programs.

Note: An additional 288 work term students in Engineering and 131 work term students in Business are considered full-time students but are not included in the numbers of majors above.

4.5 Profile of Students Majoring in Pre-Disciplines

Table 13 shows a summary of Fall 2005 academic performance for students beyond first year who are classified as “pre-majors”. These students have not been accepted to a School or Faculty but have declared their intention to pursue a particular major area of study.

Pre-Discipline	Majors	% Female	% Low Achievers	Average Course Load	Fall 2005 Average	Overall Average
Biology	65	72.3	6.2	4.31	64.9	63.2
Biochemistry	32	68.8	21.9	4.19	61.4	64.6
Business	285	42.4	19.0	3.99	59.7	61.0
Education	247	86.6	8.5	4.25	64.2	63.4
Engineering*	124	13.7	15.3	3.98	61.6	61.6
Pharmacy	105	63.5	9.5	4.31	67.4	66.8
Psychology	35	65.7	20.0	4.03	62.2	61.4
Social Work	72	91.7	6.9	4.31	66.2	64.7
Other	40	45.0	12.5	4.13	62.5	63.2
Fall 2005 Pre-Discipline	1005	59.1	13.2	4.14	62.9	62.9

* Numbers refer to Engineering A/B term.

4.6 Profile of Students with Undeclared Majors

Table 14 shows a summary of Fall 2005 academic performance for students who do not have a declared major. This summary is presented in terms of the number of credit hours students had completed at the end of Fall 2005. For 6.4% of this group, the program they are currently pursuing is not their first program, as they have completed a degree or certificate program at Memorial previously. A large proportion of students in the remaining undeclared majors group, 74.8%, have completed the appropriate credit hours necessary to declare a major (30 credit hours or more).

Table 14. Academic Profile of Students with Undeclared Majors

Undeclared	Students	% Female	% Low Achievers	Average Course Load	Fall 2005 Average	Overall Average
< = 30 Credit Hours	380	51.8	33.2	3.92	52.9	56.0
31 - 60 Credit Hours	772	58.2	10.5	4.28	64.0	64.3
> 60 Credit Hours	357	54.3	11.5	4.20	64.3	64.7
With previous degree	103	60.2	5.8	3.75	71.5	69.6
Fall 2005 Undeclared	1612	56.0	15.8	4.14	61.9	62.8

4.7 Profile of Majors at Sir Wilfred Grenfell College

Table 15 shows a summary of Fall 2005 academic performance for students majoring in a program for which degrees are offered at the Sir Wilfred Grenfell College campus. Programs in Arts include English, Historical Studies and Humanities. Programs in Science include Environmental Science, General Science and Forestry. Programs in Social Science include Environmental Studies and Psychology. Visual Arts and Theatre comprise the Fine Arts programs.

Table 15. Academic Profile of Majors at Sir Wilfred Grenfell College

Division	Majors	% Female	% Low Achievers	Average Course Load	Fall 2005 Average	Overall Average
Arts	67	65.7	9.0	4.43	66.9	67.1
Science	80	55.0	6.3	4.43	68.1	67.4
Social Science	124	72.6	8.9	4.43	69.0	66.8
Fine Arts	135	70.1	1.5	4.44	75.5	72.5
Fall 2005 SWGC	406	67.2	5.9	4.43	70.7	68.9

4.8 Overall Summary

Table 16 shows an overall summary of Fall 2005 academic performance for all students beyond their first year of study in the major categories presented previously.

**Table 16. Overall Academic Profile of Full-Time Undergraduate Majors
Beyond First Year**

Department	Majors	% Female	% Low Achievers	Average Course Load	Fall 2005 Average	Overall Average
Arts	1,706	64.3	6.6	4.34	68.2	67.3
Science	1,224	59.6	4.4	4.49	72.1	72.3
Professional	3,376	64.4	1.3	4.81	74.9	72.6
Pre-Discipline	1,005	59.1	13.2	4.14	62.9	62.9
Undeclared	1,612	56.0	15.8	4.14	61.9	62.8
SWGC	406	67.2	5.9	4.43	70.7	68.9
Fall 2005 Total	9,333	61.8	6.7	4.48	69.6	68.7

Note: Not included in this profile of students beyond first year are 301 students with majors of "Other", "NA". Also missing from Faculty of Arts due to small numbers, but not from the Fall 2005 Total, are 4 students with majors in Canadian Studies and Medieval Studies.